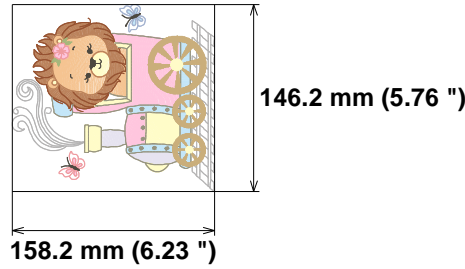


Needle Thread consumption File: 6 (5).jef (Janome)

1	1713 st.	6.0% (5.3 m)
2	680 st.	3.0% (2.6 m)
3	3535 st.	15.0% (13.1 m)
4	2179 st.	8.9% (7.8 m)
5	263 st.	0.6% (0.5 m)
6	1561 st.	8.9% (7.7 m)
7	3150 st.	11.2% (9.8 m)
8	1843 st.	9.3% (8.1 m)
9	762 st.	2.5% (2.2 m)
10	330 st.	1.0% (0.9 m)
11	348 st.	2.6% (2.3 m)
12	1136 st.	5.3% (4.7 m)
13	157 st.	0.7% (0.6 m)
14	246 st.	1.8% (1.5 m)
15	463 st.	1.3% (1.1 m)
16	406 st.	1.6% (1.4 m)
17	3008 st.	18.3% (15.9 m)
18	366 st.	1.9% (1.7 m)

Stitches: 22146
Size: 158.2 x 146.2 mm (6.23 x 5.76 ")
Begin: 79.1, 73.1 mm
End: 133.2, 98.6 mm
Start needle: 1
Colors: 14/18 , Stops: 17
Date: 11/25/2022

Upper thread 87.3 m
 Bobbin 29.1 m

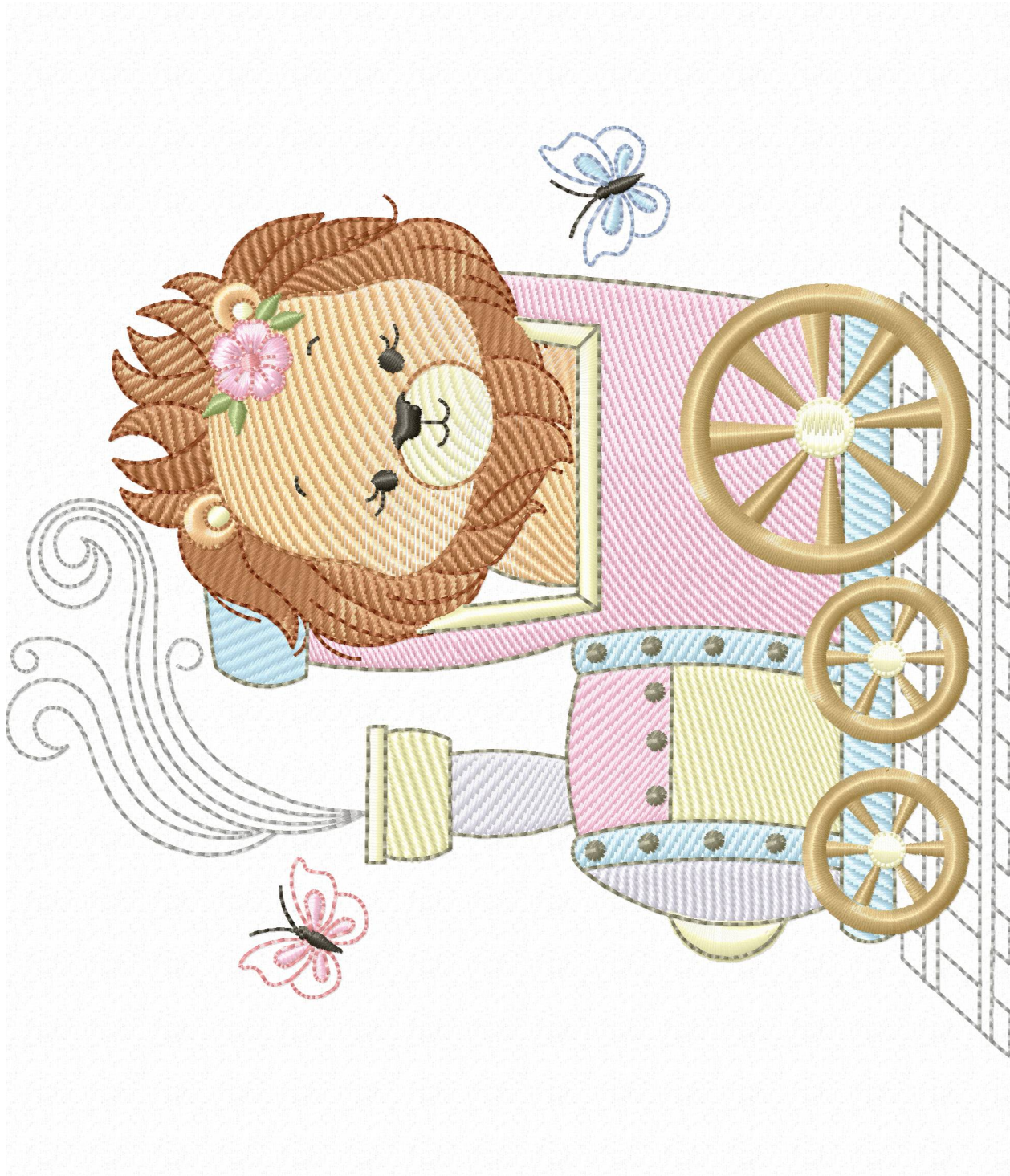


Histogram

Stitches ratio diagram:



- (1714) Stop 1
- (2394) Stop 2
- (5929) Stop 3
- (8108) Stop 4
- (8371) Stop 5
- (9932) Stop 6
- (13082) Stop 7
- (14925) Stop 8
- (15687) Stop 9
- (16017) Stop 10
- (16365) Stop 11
- (17501) Stop 12
- (17658) Stop 13
- (17904) Stop 14
- (18367) Stop 15
- (18773) Stop 16
- (21781) Stop 17
- (22146) End

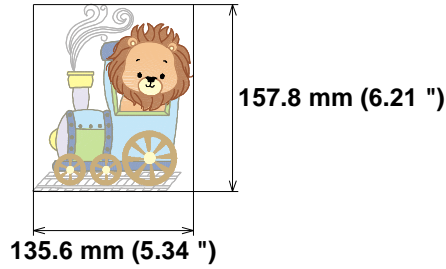


Needle Thread consumption File: 5 (5).jef (Janome)

1	1673 st.	6.1%	(5.1 m)
2	690 st.	3.3%	(2.7 m)
3	4101 st.	16.1%	(13.5 m)
4	2134 st.	8.9%	(7.5 m)
5	1096 st.	7.2%	(6.1 m)
6	509 st.	3.3%	(2.7 m)
7	346 st.	1.9%	(1.6 m)
8	3199 st.	11.9%	(10.1 m)
9	1880 st.	9.8%	(8.3 m)
10	764 st.	2.6%	(2.2 m)
11	334 st.	1.1%	(0.9 m)
12	1147 st.	5.7%	(4.8 m)
13	206 st.	1.0%	(0.8 m)
14	3052 st.	19.3%	(16.3 m)
15	370 st.	2.0%	(1.7 m)

Stitches: 21501
Size: 135.6 x 157.8 mm (5.34 x 6.21 ")
Begin: 67.8, 78.9 mm
End: 98.3, 23.6 mm
Start needle: 1
Colors: 13/15 , Stops: 14
Date: 11/25/2022

Upper thread 84.4 m
 Bobbin 28.1 m



Histogram

Stitches ratio diagram:



- (1674) Stop 1
- (2364) Stop 2
- (6465) Stop 3
- (8599) Stop 4
- (9695) Stop 5
- (10204) Stop 6
- (10550) Stop 7
- (13749) Stop 8
- (15629) Stop 9
- (16393) Stop 10
- (16727) Stop 11
- (17874) Stop 12
- (18080) Stop 13
- (21132) Stop 14
- (21501) End

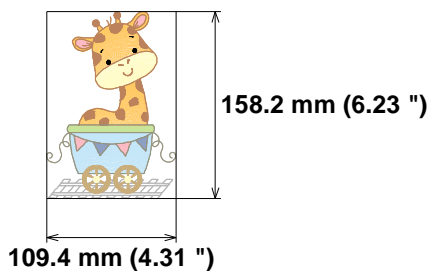


Needle Thread consumption File: 4 (5).jef (Janome)

1	829 st.	4.9%	(2.6 m)
2	2114 st.	16.3%	(8.6 m)
3	231 st.	2.9%	(1.5 m)
4	479 st.	4.3%	(2.3 m)
5	378 st.	7.4%	(3.9 m)
6	2503 st.	19.5%	(10.3 m)
7	814 st.	7.0%	(3.7 m)
8	1859 st.	17.8%	(9.4 m)
9	755 st.	4.1%	(2.1 m)
10	180 st.	1.1%	(0.6 m)
11	1648 st.	13.4%	(7.1 m)
12	184 st.	1.3%	(0.7 m)

Stitches: 11974
Size: 109.4 x 158.2 mm (4.31 x 6.23 ")
Begin: 54.7, 79.1 mm
End: 68.5, 13.6 mm
Start needle: 1
Colors: 11/12 , Stops: 11
Date: 11/25/2022

Upper thread 53.0 m
 Bobbin 17.7 m



Histogram

Stitches ratio diagram:



- (830) Stop 1
- (2944) Stop 2
- (3175) Stop 3
- (3654) Stop 4
- (4032) Stop 5
- (6535) Stop 6
- (7349) Stop 7
- (9208) Stop 8
- (9963) Stop 9
- (10143) Stop 10
- (11791) Stop 11
- (11974) End

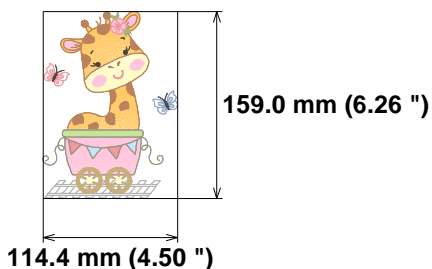


Needle Thread consumption File: 3 (5).jef (Janome)

1	757 st.	4.3% (2.4 m)
2	2632 st.	19.2% (10.8 m)
3	889 st.	7.2% (4.1 m)
4	2267 st.	15.9% (8.9 m)
5	1741 st.	16.1% (9.0 m)
6	155 st.	0.9% (0.5 m)
7	346 st.	3.5% (2.0 m)
8	351 st.	6.0% (3.4 m)
9	298 st.	2.9% (1.6 m)
10	727 st.	4.5% (2.5 m)
11	722 st.	3.7% (2.1 m)
12	261 st.	1.2% (0.7 m)
13	389 st.	2.2% (1.2 m)
14	1549 st.	11.3% (6.4 m)
15	180 st.	1.1% (0.6 m)

Stitches: 13264
Size: 114.4 x 159.0 mm (4.50 x 6.26 ")
Begin: 57.2, 79.5 mm
End: 64.0, 12.8 mm
Start needle: 1
Colors: 13/15 , Stops: 14
Date: 11/25/2022

Upper thread 56.0 m
 Bobbin 18.7 m



Histogram

Stitches ratio diagram:



- (758) Stop 1
- (3390) Stop 2
- (4279) Stop 3
- (6546) Stop 4
- (8287) Stop 5
- (8442) Stop 6
- (8788) Stop 7
- (9139) Stop 8
- (9437) Stop 9
- (10164) Stop 10
- (10886) Stop 11
- (11147) Stop 12
- (11536) Stop 13
- (13085) Stop 14
- (13264) End

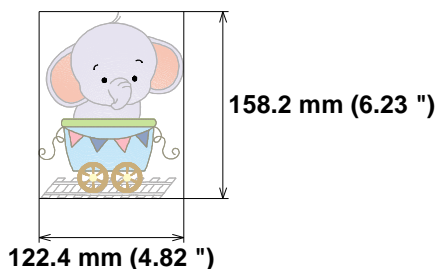


Needle Thread consumption File: 2 (5).jef (Janome)

1	1629 st.	9.3% (6.0 m)
2	5067 st.	37.0% (23.9 m)
3	1556 st.	7.9% (5.1 m)
4	199 st.	1.2% (0.8 m)
5	2457 st.	15.8% (10.2 m)
6	260 st.	2.7% (1.8 m)
7	229 st.	2.3% (1.5 m)
8	751 st.	6.9% (4.5 m)
9	807 st.	3.4% (2.2 m)
10	1758 st.	12.4% (8.0 m)
11	195 st.	1.2% (0.8 m)

Stitches: 14908
Size: 122.4 x 158.2 mm (4.82 x 6.23 ")
Begin: 61.2, 79.1 mm
End: 74.3, 14.8 mm
Start needle: 1
Colors: 11/11 , Stops: 10
Date: 11/25/2022

Upper thread 64.6 m
Bobbin 21.5 m



Histogram

Stitches ratio diagram:



(1630)	Stop 1
(6697)	Stop 2
(8253)	Stop 3
(8452)	Stop 4
(10909)	Stop 5
(11169)	Stop 6
(11398)	Stop 7
(12149)	Stop 8
(12956)	Stop 9
(14714)	Stop 10
(14908)	End



Needle Thread consumption File: 1 (5).jef (Janome)

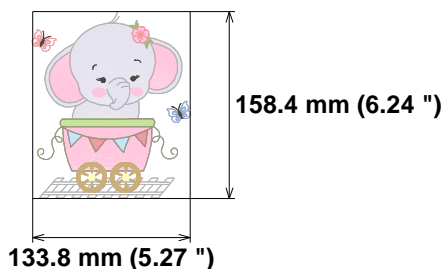
1	5028 st.	33.3% (23.5 m)
2	4174 st.	23.5% (16.6 m)
3	1557 st.	7.4% (5.2 m)
4	166 st.	0.9% (0.6 m)
5	751 st.	6.4% (4.5 m)
6	259 st.	2.4% (1.7 m)
7	315 st.	2.6% (1.8 m)
8	815 st.	3.4% (2.4 m)
9	336 st.	3.1% (2.2 m)
10	468 st.	1.7% (1.2 m)
11	250 st.	0.8% (0.6 m)
12	1759 st.	11.4% (8.1 m)
13	194 st.	1.1% (0.8 m)
14	413 st.	2.0% (1.4 m)

Stitches: 16485
Size: 133.8 x 158.4 mm (5.27 x 6.24 ")
Begin: 66.9, 79.2 mm
End: 127.2, 67.7 mm
Start needle: 1
Colors: 12/14 , Stops: 13
Date: 11/25/2022

ZOOM
Embroidery Designs

www.zoomembroidery.com

Upper thread 70.5 m
Bobbin 23.5 m



Histogram

Stitches ratio diagram:



(5029) Stop 1
(9203) Stop 2
(10760) Stop 3
(10926) Stop 4
(11677) Stop 5
(11936) Stop 6
(12251) Stop 7
(13066) Stop 8
(13402) Stop 9
(13870) Stop 10
(14120) Stop 11
(15879) Stop 12
(16073) Stop 13
(16485) End

