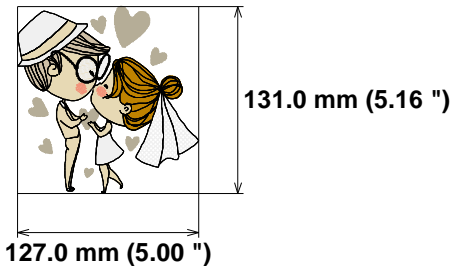


Needle Thread consumption File: 01\_5x7.jef (Janome)

1	3197 st.	16.3% (14.9 m)
2	2400 st.	11.4% (10.4 m)
3	3520 st.	18.1% (16.4 m)
4	4648 st.	18.0% (16.4 m)
5	2070 st.	8.1% (7.4 m)
6	112 st.	0.5% (0.4 m)
7	1838 st.	9.0% (8.2 m)
8	208 st.	1.0% (0.9 m)
9	5093 st.	17.7% (16.1 m)

**Stitches: 23086**  
**Size: 127.0 x 131.0 mm (5.00 x 5.16 ")**  
**Begin: 63.5, 65.5 mm**  
**End: 64.3, 90.0 mm**  
**Start needle: 1**  
**Colors: 7/9 , Stops: 8**  
**Date: 12/6/2022**

Upper thread 91.0 m  
Bobbin 30.3 m



Histogram

Stitches ratio diagram:

- (3198) Stop 1
- (5598) Stop 2
- (9118) Stop 3
- (13766) Stop 4
- (15836) Stop 5
- (15948) Stop 6
- (17786) Stop 7
- (17994) Stop 8
- (23086) End



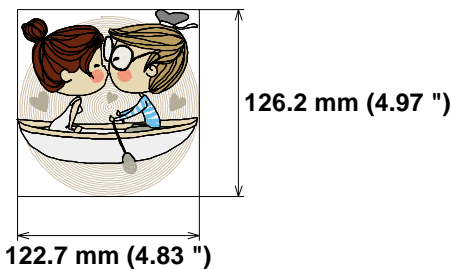


Needle Thread consumption File: 02\_5x7.jef (Janome)

1	3177 st.	11.5% (13.1 m)
2	615 st.	2.2% (2.5 m)
3	3270 st.	13.7% (15.6 m)
4	3939 st.	14.4% (16.3 m)
5	2712 st.	11.0% (12.5 m)
6	157 st.	0.5% (0.6 m)
7	5301 st.	19.5% (22.2 m)
8	347 st.	1.4% (1.5 m)
9	986 st.	1.6% (1.8 m)
10	2621 st.	7.1% (8.1 m)
11	637 st.	1.8% (2.0 m)
12	5534 st.	15.3% (17.3 m)

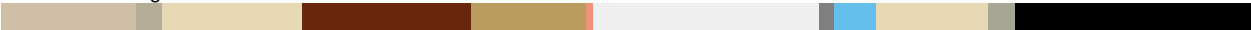
**Stitches: 29296**  
**Size: 122.7 x 126.2 mm (4.83 x 4.97 ")**  
**Begin: 61.3, 63.1 mm**  
**End: 61.0, 90.8 mm**  
**Start needle: 1**  
**Colors: 11/12 , Stops: 11**  
**Date: 12/6/2022**

Upper thread 113.5 m  
Bobbin 37.8 m



Histogram

Stitches ratio diagram:



- (3178) Stop 1
- (3793) Stop 2
- (7063) Stop 3
- (11002) Stop 4
- (13714) Stop 5
- (13871) Stop 6
- (19172) Stop 7
- (19519) Stop 8
- (20505) Stop 9
- (23126) Stop 10
- (23763) Stop 11
- (29296) End





Needle Thread consumption File: 03\_5x7.jef (Janome)

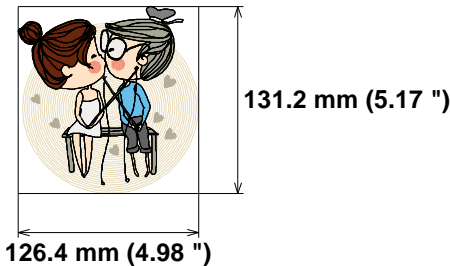
1	3275 st.	13.5% (13.5 m)
2	4448 st.	18.5% (18.5 m)
3	3825 st.	15.9% (15.9 m)
4	154 st.	0.6% (0.6 m)
5	314 st.	1.3% (1.3 m)
6	1053 st.	4.7% (4.7 m)
7	1237 st.	5.2% (5.2 m)
8	3529 st.	16.0% (16.0 m)
9	866 st.	3.3% (3.3 m)
10	732 st.	2.4% (2.4 m)
11	6197 st.	18.7% (18.7 m)

Upper thread 100.1 m  
Bobbin 33.4 m

Stitches: 25630  
Size: 126.4 x 131.2 mm (4.98 x 5.17 ")  
Begin: 63.2, 65.6 mm  
End: 68.3, 69.1 mm  
Start needle: 1  
Colors: 11/11 , Stops: 10  
Date: 12/6/2022



www.zoomembroidery.com

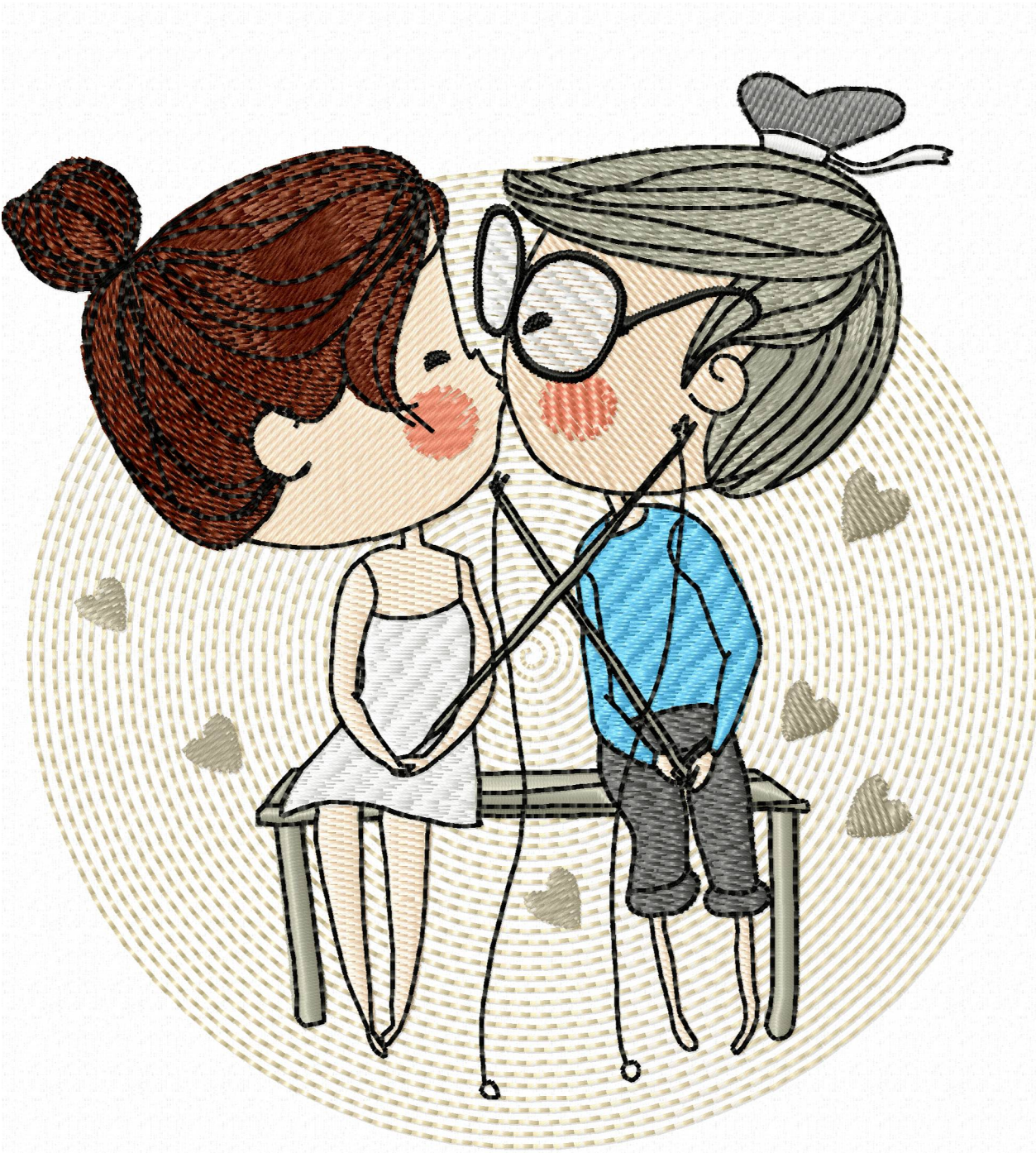


Histogram

Stitches ratio diagram:



- ( 3276 ) Stop 1
- ( 7724 ) Stop 2
- ( 11549 ) Stop 3
- ( 11703 ) Stop 4
- ( 12017 ) Stop 5
- ( 13070 ) Stop 6
- ( 14307 ) Stop 7
- ( 17836 ) Stop 8
- ( 18702 ) Stop 9
- ( 19434 ) Stop 10
- ( 25630 ) End



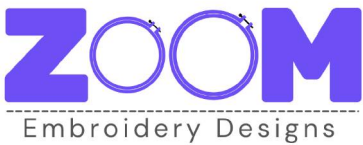


Needle Thread consumption File: 04\_5x7.jef (Janome)

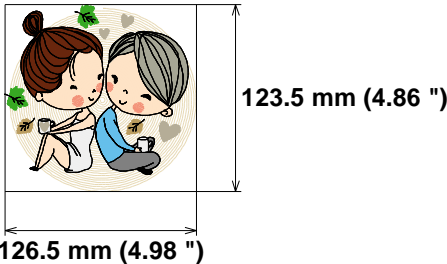
1	3271 st.	12.2% (13.5 m)
2	5249 st.	23.9% (26.4 m)
3	3113 st.	12.7% (14.0 m)
4	3703 st.	13.9% (15.4 m)
5	215 st.	0.7% (0.8 m)
6	877 st.	3.2% (3.5 m)
7	561 st.	2.0% (2.2 m)
8	858 st.	3.3% (3.7 m)
9	1348 st.	5.5% (6.1 m)
10	668 st.	2.4% (2.6 m)
11	956 st.	4.3% (4.7 m)
12	5433 st.	16.0% (17.7 m)

Upper thread 110.5 m  
Bobbin 36.8 m

Stitches: 26252  
Size: 126.5 x 123.5 mm (4.98 x 4.86 ")  
Begin: 63.2, 61.7 mm  
End: 57.2, 113.4 mm  
Start needle: 1  
Colors: 12/12 , Stops: 11  
Date: 12/6/2022



www.zoomembroidery.com



Histogram

Stitches ratio diagram:



- ( 3272 ) Stop 1
- ( 8521 ) Stop 2
- ( 11634 ) Stop 3
- ( 15337 ) Stop 4
- ( 15552 ) Stop 5
- ( 16429 ) Stop 6
- ( 16990 ) Stop 7
- ( 17848 ) Stop 8
- ( 19196 ) Stop 9
- ( 19864 ) Stop 10
- ( 20820 ) Stop 11
- ( 26252 ) End



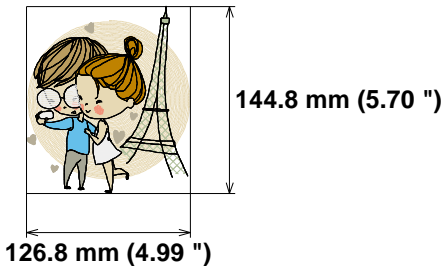


Needle Thread consumption File: 05\_5x7.jef (Janome)

1	5071 st.	21.3% (20.9 m)
2	640 st.	2.3% (2.2 m)
3	961 st.	3.4% (3.4 m)
4	3823 st.	18.6% (18.3 m)
5	1223 st.	6.0% (5.9 m)
6	752 st.	3.2% (3.2 m)
7	2705 st.	11.6% (11.4 m)
8	2267 st.	10.0% (9.8 m)
9	152 st.	0.5% (0.5 m)
10	178 st.	0.3% (0.3 m)
11	855 st.	3.8% (3.7 m)
12	5234 st.	17.1% (16.8 m)
13	292 st.	1.2% (1.2 m)
14	183 st.	0.6% (0.6 m)

**Stitches: 24336**  
**Size: 126.8 x 144.8 mm (4.99 x 5.70 ")**  
**Begin: 63.4, 72.4 mm**  
**End: 41.4, 66.9 mm**  
**Start needle: 1**  
**Colors: 10/14 , Stops: 13**  
**Date: 12/6/2022**

Upper thread 98.1 m  
Bobbin 32.7 m



Histogram

Stitches ratio diagram:



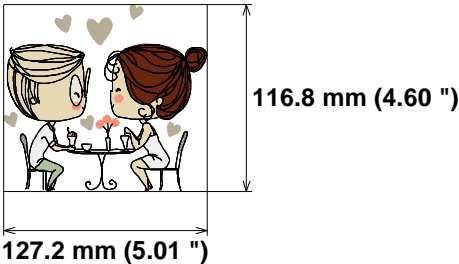
- (5072) Stop 1
- (5712) Stop 2
- (6673) Stop 3
- (10496) Stop 4
- (11719) Stop 5
- (12471) Stop 6
- (15176) Stop 7
- (17443) Stop 8
- (17595) Stop 9
- (17773) Stop 10
- (18628) Stop 11
- (23862) Stop 12
- (24154) Stop 13
- (24336) End





Needle Thread consumption File: 06\_5x7.jef (Janome)  
Stitches: 20286  
Size: 127.2 x 116.8 mm (5.01 x 4.60 ")  
Begin: 63.6, 58.4 mm  
End: 70.4, 63.4 mm  
Start needle: 1  
Colors: 8/9 , Stops: 8  
Date: 12/6/2022

Upper thread 78.8 m  
Bobbin 26.3 m



Histogram

Stitches ratio diagram:

- (3528) Stop 1
- (5595) Stop 2
- (5959) Stop 3
- (6157) Stop 4
- (7368) Stop 5
- (7631) Stop 6
- (10428) Stop 7
- (14448) Stop 8
- (20286) End

