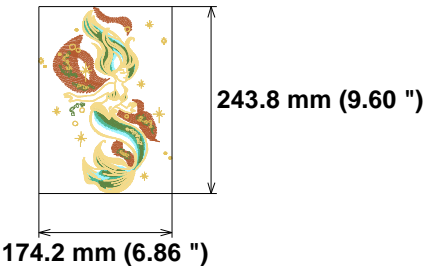


Needle Thread consumption File: 1 (1).jef (Janome)
Stitches: 23409
Size: 174.2 x 243.8 mm (6.86 x 9.60 ")
Begin: 87.1, 121.9 mm
End: 106.1, 160.0 mm
Start needle: 1
Colors: 6/7 , Stops: 6
Date: 12/6/2022

1	2152 st.	11.6% (10.4 m)
2	579 st.	2.2% (2.0 m)
3	1572 st.	6.5% (5.8 m)
4	2887 st.	14.6% (13.0 m)
5	2650 st.	12.4% (11.1 m)
6	1591 st.	7.5% (6.7 m)
7	11978 st.	45.3% (40.6 m)
Upper thread	89.6 m	
Bobbin	29.9 m	



Histogram

Stitches ratio diagram:

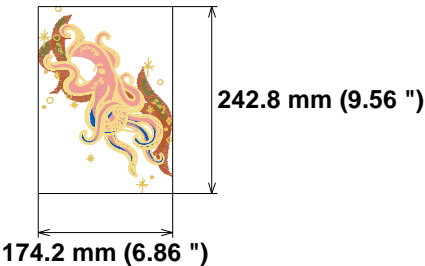


- (2153) Stop 1
- (2732) Stop 2
- (4304) Stop 3
- (7191) Stop 4
- (9841) Stop 5
- (11432) Stop 6
- (23409) End



Needle Thread consumption File: 1 (2).jef (Janome)
Stitches: 30197
Size: 174.2 x 242.8 mm (6.86 x 9.56 ")
Begin: 87.1, 121.4 mm
End: 59.2, 187.2 mm
Start needle: 1
Colors: 6/7 , Stops: 6
Date: 12/6/2022

1	2338 st.	9.2% (10.5 m)
2	422 st.	1.2% (1.4 m)
3	1306 st.	3.9% (4.5 m)
4	3732 st.	13.5% (15.3 m)
5	6260 st.	22.6% (25.7 m)
6	2612 st.	8.7% (9.9 m)
7	13527 st.	40.9% (46.5 m)
Upper thread	113.7 m	
Bobbin	37.9 m	



Histogram

Stitches ratio diagram:

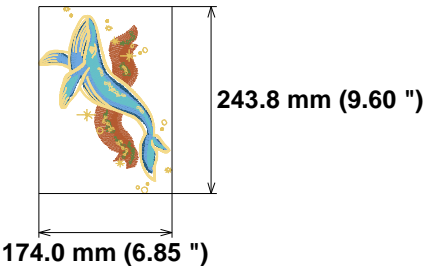


- (2339) Stop 1
- (2761) Stop 2
- (4067) Stop 3
- (7799) Stop 4
- (14059) Stop 5
- (16671) Stop 6
- (30197) End



Needle Thread consumption File: 1 (3).jef (Janome)
Stitches: 18406
Size: 174.0 x 243.8 mm (6.85 x 9.60 ")
Begin: 87.0, 121.9 mm
End: 136.2, 107.7 mm
Start needle: 1
Colors: 7/7 , Stops: 6
Date: 12/6/2022

1	2240 st.	14.0% (11.0 m)
2	480 st.	1.9% (1.5 m)
3	1250 st.	5.6% (4.4 m)
4	3270 st.	19.7% (15.6 m)
5	3198 st.	18.4% (14.5 m)
6	1374 st.	7.6% (6.0 m)
7	6594 st.	32.8% (25.9 m)
Upper thread	79.0 m	
Bobbin	26.3 m	

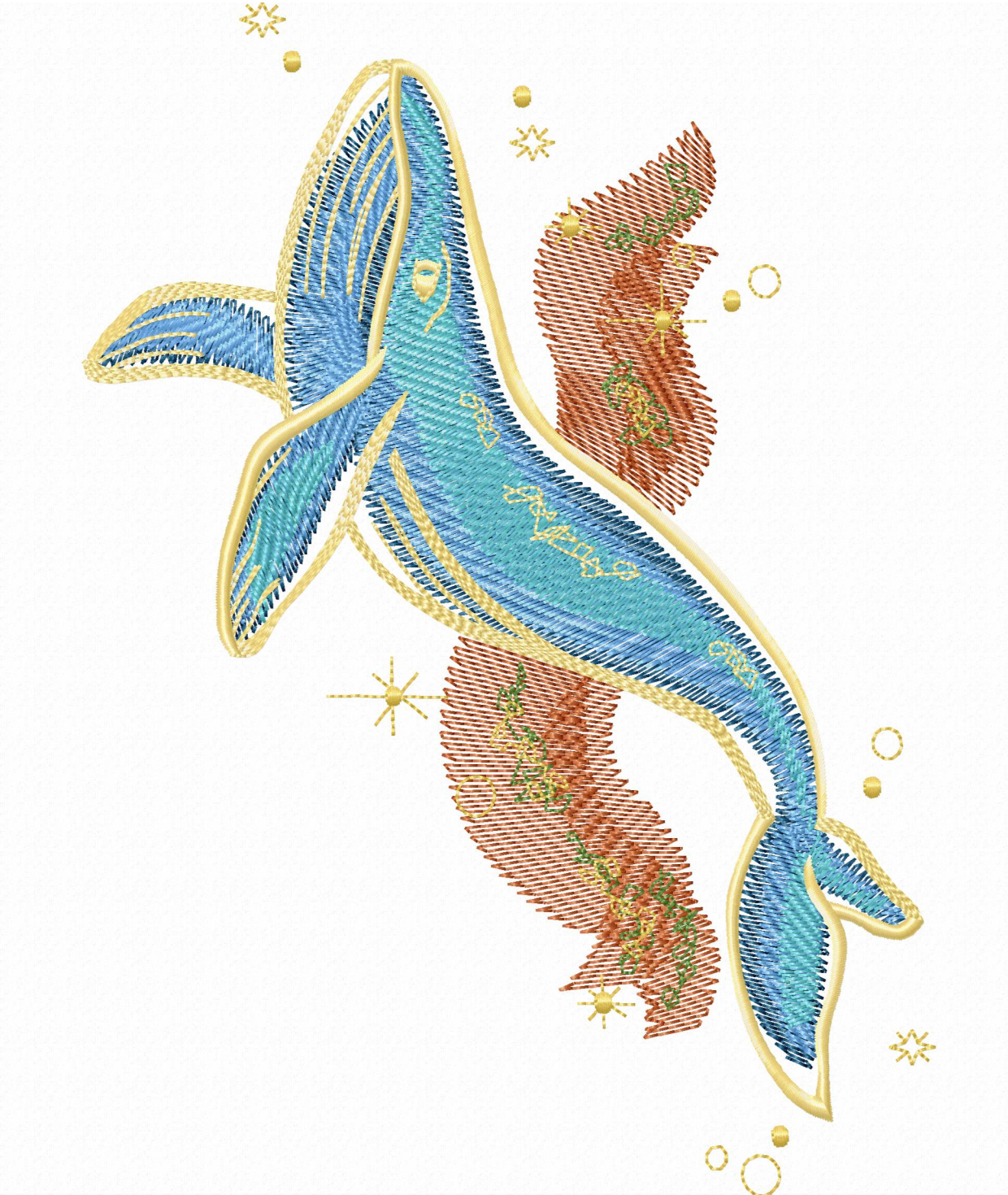


Histogram

Stitches ratio diagram:

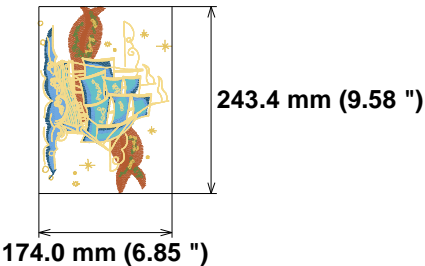


- (2241) Stop 1
- (2721) Stop 2
- (3971) Stop 3
- (7241) Stop 4
- (10439) Stop 5
- (11813) Stop 6
- (18406) End



Needle Thread consumption File: 1 (4).jef (Janome)
Stitches: 31571
Size: 174.0 x 243.4 mm (6.85 x 9.58 ")
Begin: 87.0, 121.7 mm
End: 7.6, 84.8 mm
Start needle: 1
Colors: 7/7 , Stops: 6
Date: 12/6/2022

1	3002 st.	12.0% (14.2 m)
2	642 st.	1.6% (1.9 m)
3	1100 st.	3.4% (4.0 m)
4	4690 st.	18.4% (21.8 m)
5	5131 st.	19.3% (22.9 m)
6	2026 st.	7.7% (9.1 m)
7	14980 st.	37.7% (44.8 m)
Upper thread		118.8 m
Bobbin		39.6 m

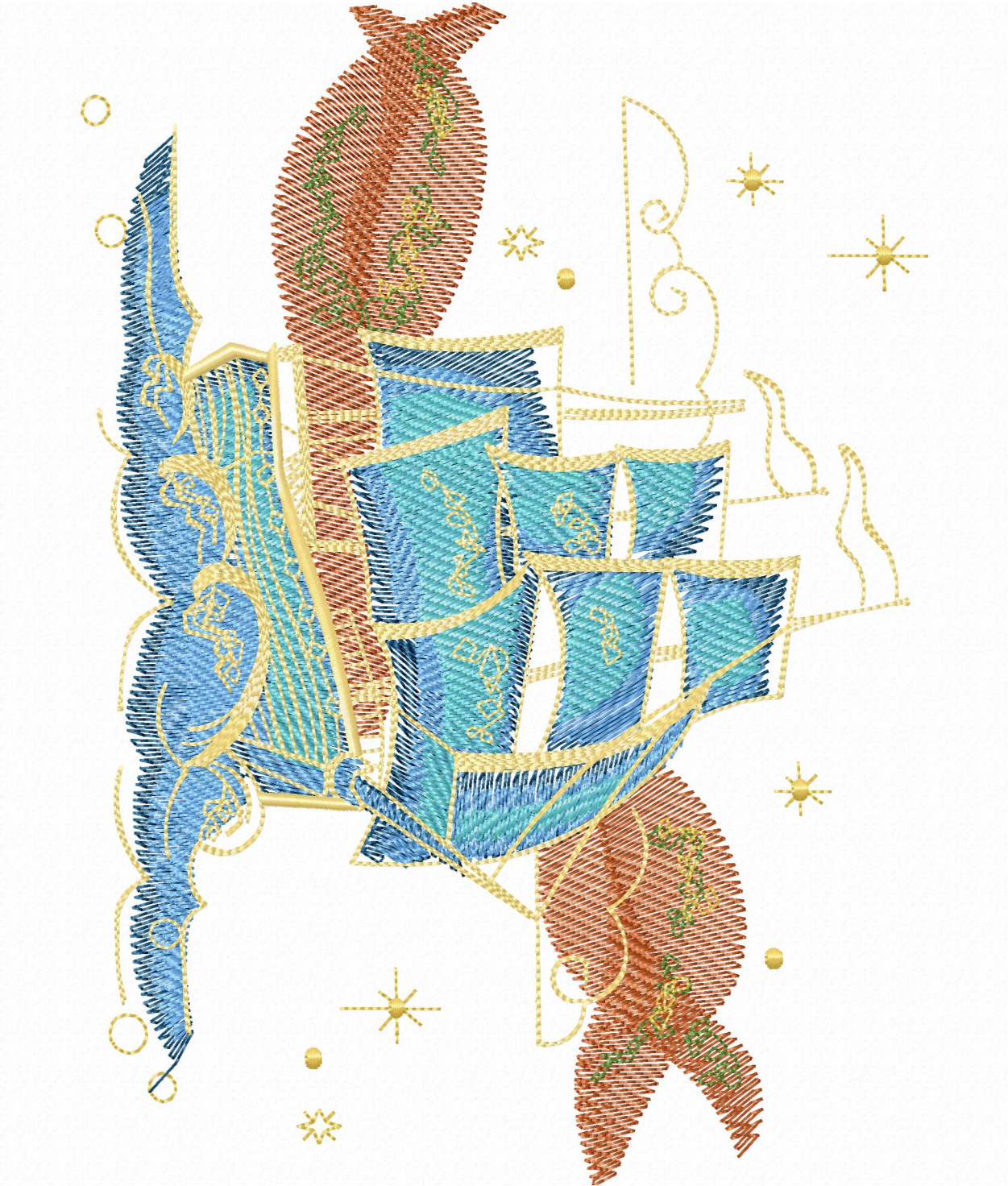


Histogram

Stitches ratio diagram:

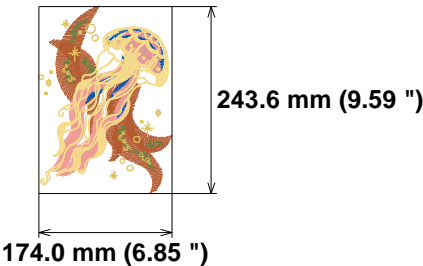


- (3003) Stop 1
- (3645) Stop 2
- (4745) Stop 3
- (9435) Stop 4
- (14566) Stop 5
- (16592) Stop 6
- (31571) End



Needle Thread consumption File: 1 (5).jef (Janome)
Stitches: 30390
Size: 174.0 x 243.6 mm (6.85 x 9.59 ")
Begin: 87.0, 121.8 mm
End: 155.2, 160.0 mm
Start needle: 1
Colors: 6/7 , Stops: 6
Date: 12/6/2022

1	4608 st.	18.0% (21.7 m)
2	646 st.	1.7% (2.1 m)
3	1203 st.	3.5% (4.2 m)
4	2920 st.	11.7% (14.1 m)
5	5332 st.	19.5% (23.4 m)
6	2164 st.	7.4% (8.9 m)
7	13517 st.	38.2% (46.0 m)
Upper thread	120.4 m	
Bobbin	40.1 m	



Histogram

Stitches ratio diagram:

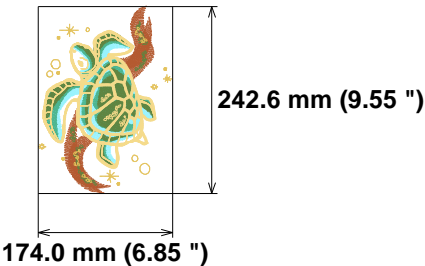


- (4609) Stop 1
- (5255) Stop 2
- (6458) Stop 3
- (9378) Stop 4
- (14710) Stop 5
- (16874) Stop 6
- (30390) End



Needle Thread consumption File: 1 (6).jef (Janome)
Stitches: 28466
Size: 174.0 x 242.6 mm (6.85 x 9.55 ")
Begin: 87.0, 121.3 mm
End: 56.1, 164.8 mm
Start needle: 1
Colors: 6/7 , Stops: 6
Date: 12/6/2022

1	2184 st.	9.1% (10.9 m)
2	477 st.	1.3% (1.6 m)
3	1128 st.	3.4% (4.1 m)
4	5469 st.	22.0% (26.5 m)
5	4790 st.	17.3% (20.8 m)
6	3098 st.	11.2% (13.4 m)
7	11320 st.	35.7% (42.9 m)
Upper thread	120.2 m	
Bobbin	40.1 m	



Histogram

Stitches ratio diagram:



- (2185) Stop 1
- (2662) Stop 2
- (3790) Stop 3
- (9259) Stop 4
- (14049) Stop 5
- (17147) Stop 6
- (28466) End

