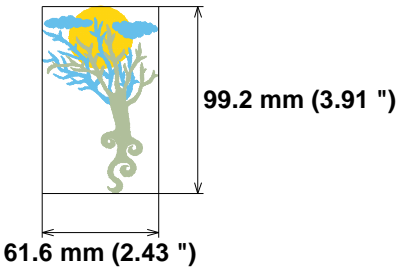


Needle Thread consumption File: 1 (1).jef (Janome)
1 2864 st. 36.0% (10.8 m) Stitches: 9790
2 3389 st. 30.0% (9.0 m) Size: 61.6 x 99.2 mm (2.43 x 3.91 ")
3 3537 st. 34.0% (10.2 m) Begin: 30.8, 49.6 mm
Upper thread 30.0 m End: 6.4, 68.4 mm
Bobbin 10.0 m Start needle: 1
Colors: 3/3 , Stops: 2
Date: 12/15/2022



www.zoomembroidery.com

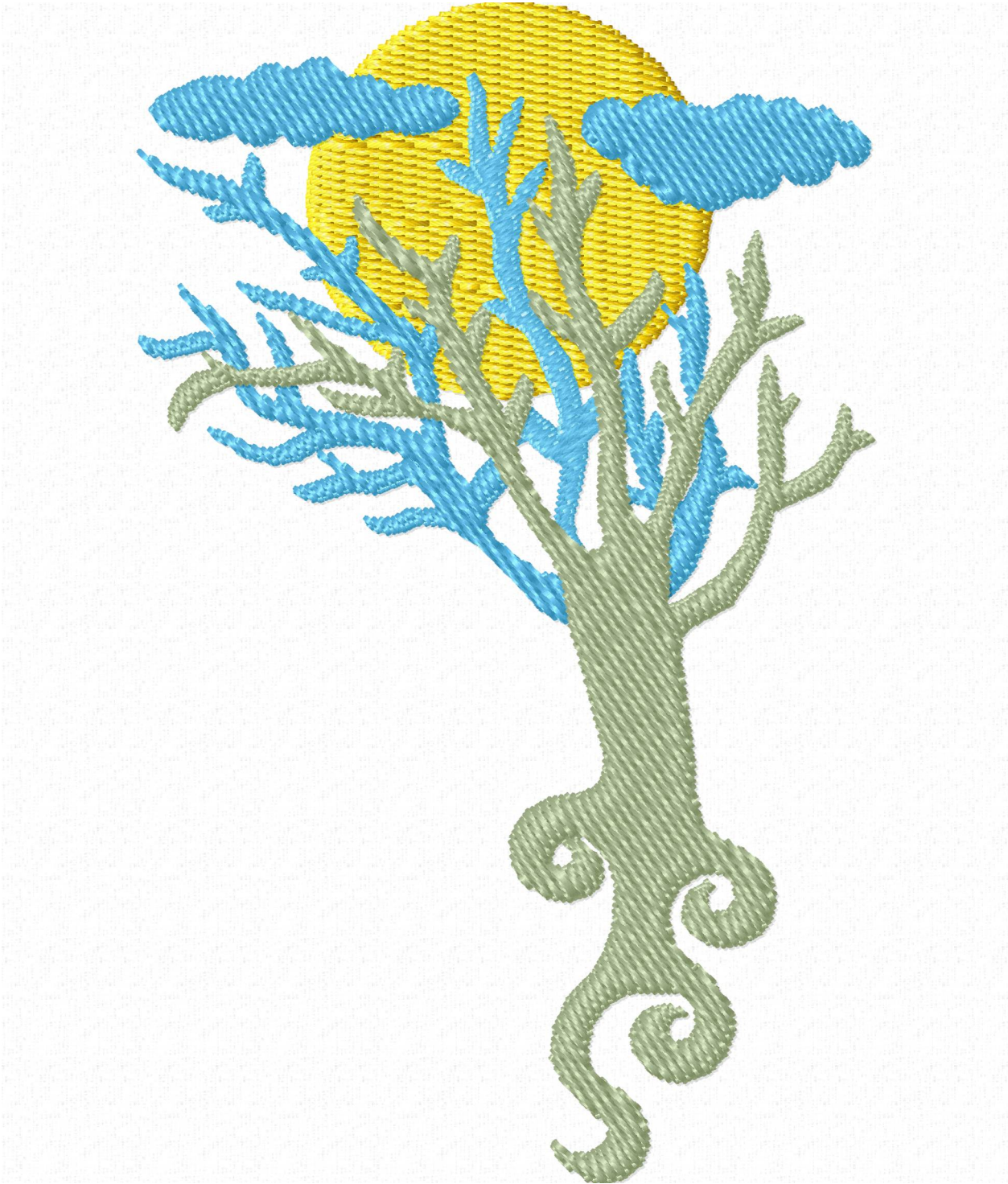


Histogram

Stitches ratio diagram:

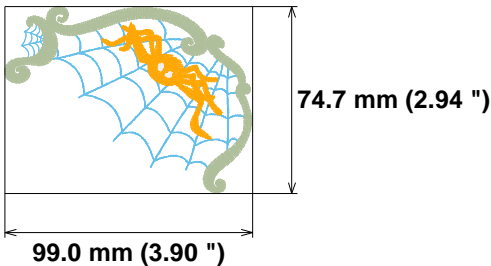


(2865) Stop 1
(6254) Stop 2
(9790) End



Needle Thread consumption File: 1 (10).jef (Janome)
Stitches: 5455
Size: 99.0 x 74.7 mm (3.90 x 2.94 ")
Begin: 49.5, 37.3 mm
End: 85.7, 2.8 mm
Start needle: 1
Colors: 4/4 , Stops: 3
Date: 12/15/2022

1	1628 st.	25.2% (5.7 m)
2	1797 st.	26.3% (6.0 m)
3	69 st.	0.8% (0.2 m)
4	1961 st.	47.6% (10.8 m)
Upper thread		22.7 m
Bobbin		7.6 m

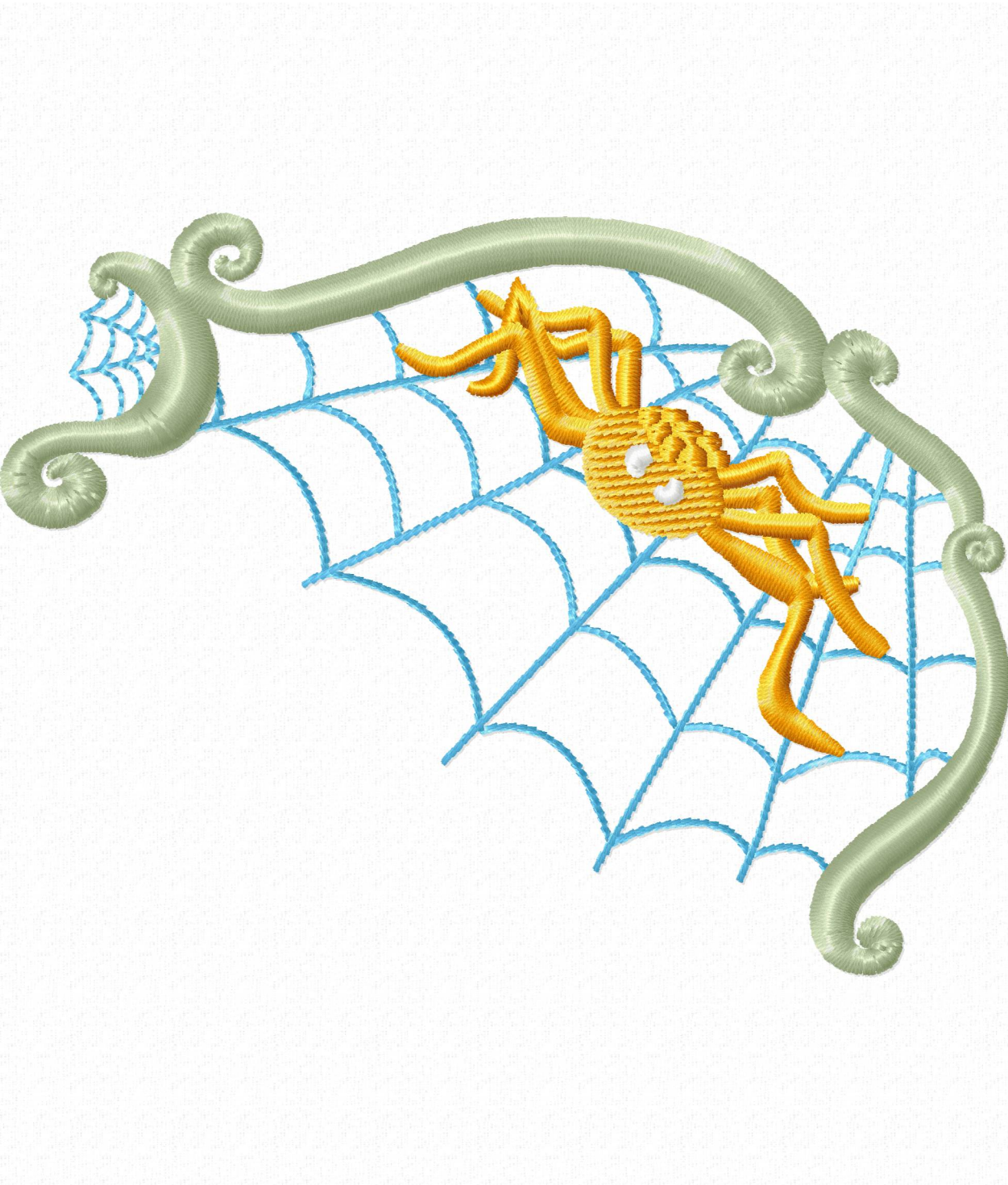


Histogram

Stitches ratio diagram:



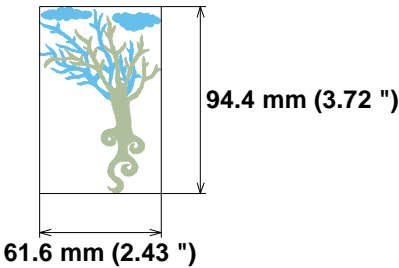
- (1629) Stop 1
- (3426) Stop 2
- (3495) Stop 3
- (5455) End



Needle Thread consumption File: 1 (2).jef (Janome)
1 3388 st. 47.0% (9.0 m) Stitches: 6925
2 3537 st. 53.0% (10.2 m) Size: 61.6 x 94.4 mm (2.43 x 3.72 ")
Upper thread 19.3 m Begin: 30.8, 47.2 mm
Bobbin 6.4 m End: 6.4, 68.4 mm
Start needle: 1
Colors: 2/2 , Stops: 1
Date: 12/15/2022



www.zoomembroidery.com

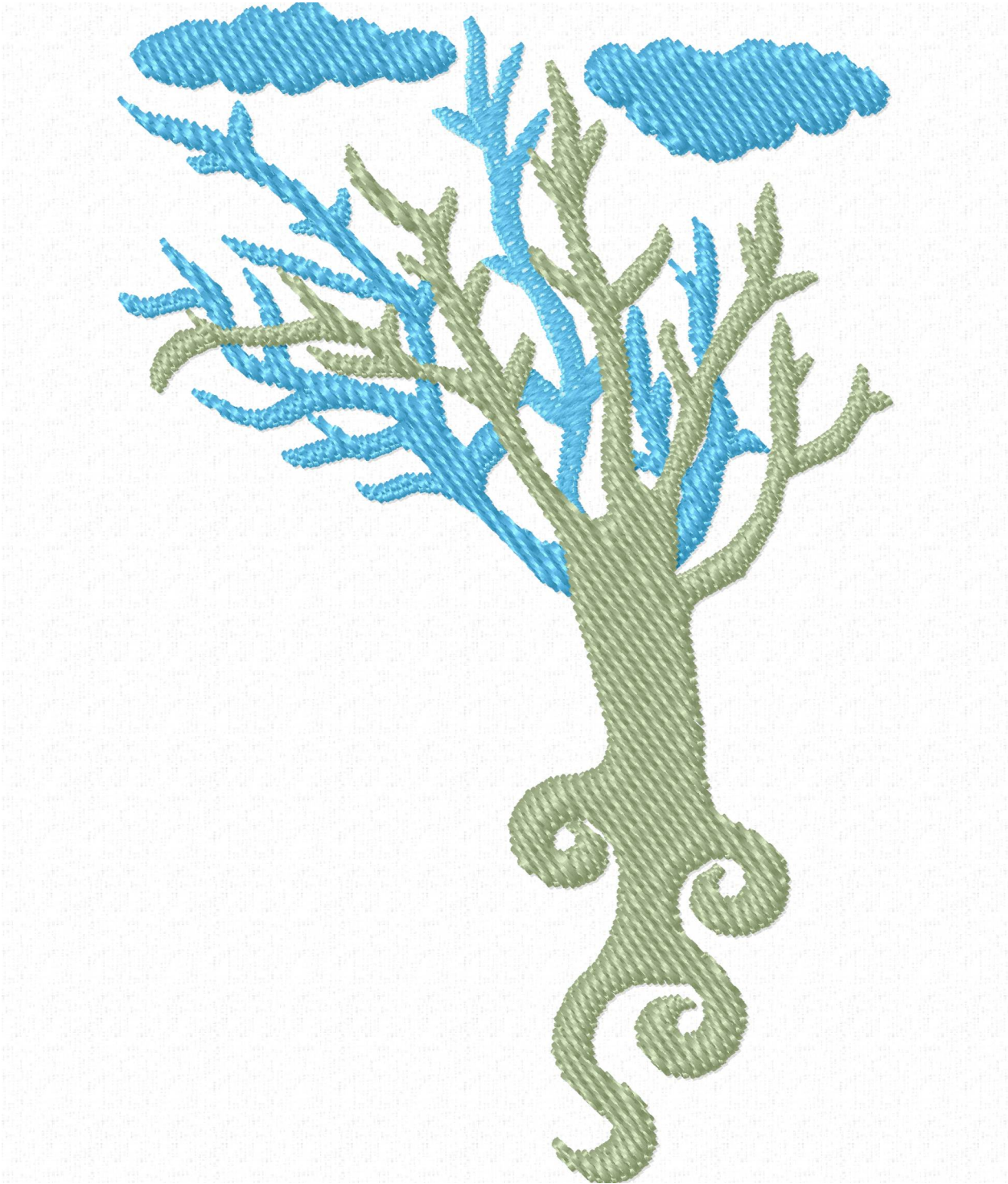


Histogram

Stitches ratio diagram:



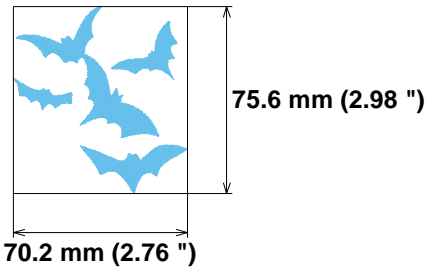
(3389) Stop 1
(6925) End



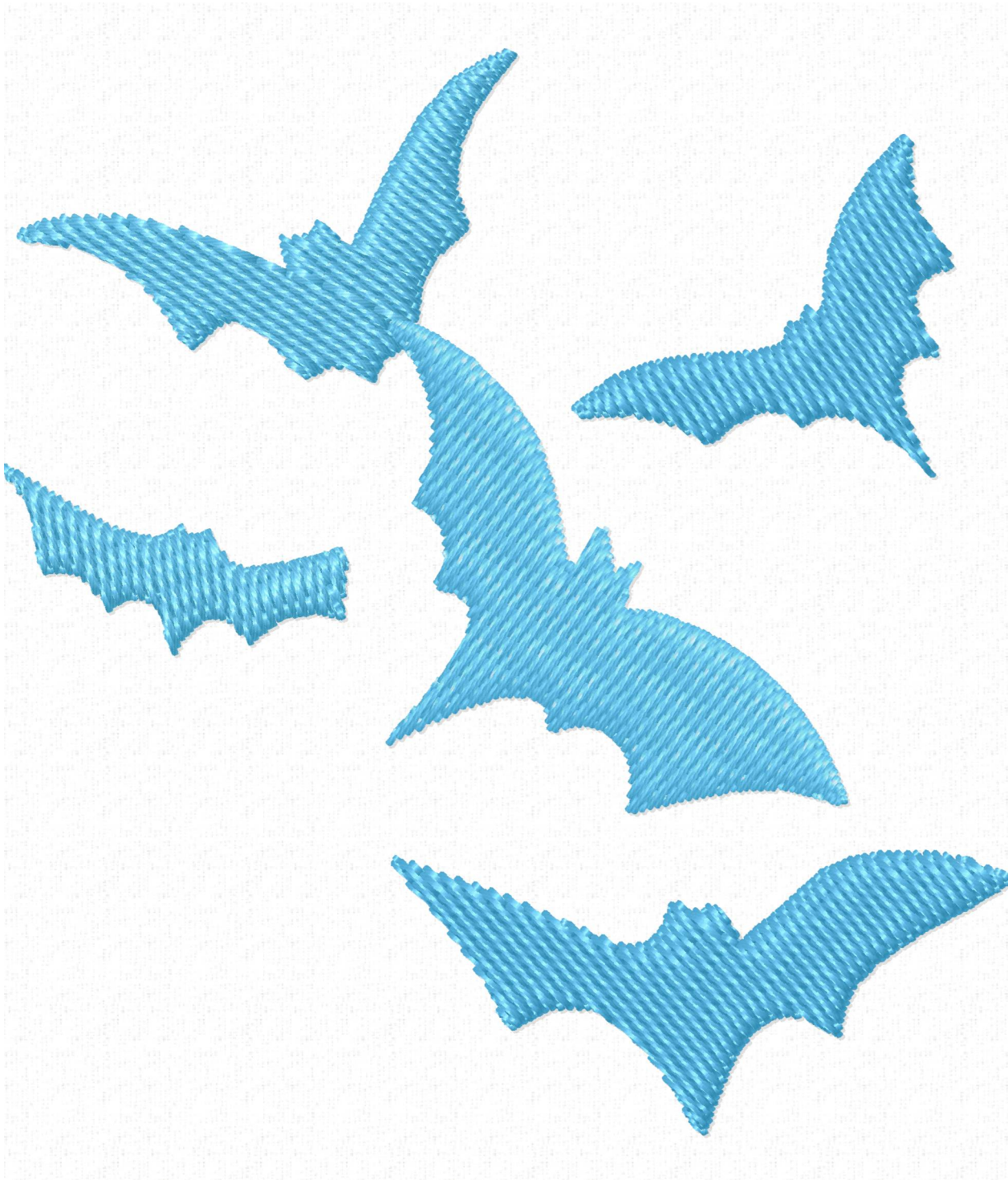
Needle Thread consumption File: 1 (3).jef (Janome)
1 3646 st. 100.0% (14.8 m) Stitches: 3646
Upper thread 14.8 m Size: 70.2 x 75.6 mm (2.76 x 2.98 ")
Bobbin 4.9 m Begin: 35.1, 37.8 mm
End: 23.6, 36.0 mm
Start needle: 1
Colors: 1/1 , Stops: 0
Date: 12/15/2022



www.zoomembroidery.com

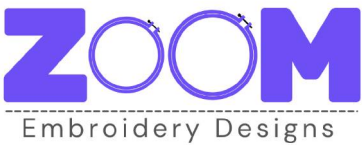


Histogram
(3646) End

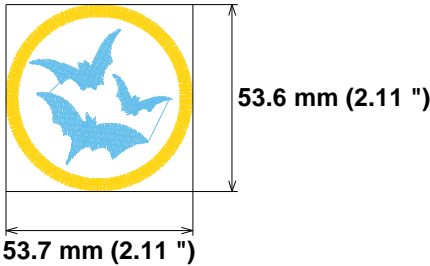


Needle Thread consumption File: 1 (4).jef (Janome)
Stitches: 2972
Size: 53.7 x 53.6 mm (2.11 x 2.11 ")
Begin: 26.9, 26.8 mm
End: 41.0, 22.8 mm
Start needle: 1
Colors: 4/4 , Stops: 3
Date: 12/15/2022

1	91 st.	2.6% (0.3 m)
2	89 st.	2.2% (0.3 m)
3	1292 st.	52.7% (6.5 m)
4	1500 st.	42.5% (5.3 m)
Upper thread	12.4 m	
Bobbin	4.1 m	



www.zoomembroidery.com



Histogram

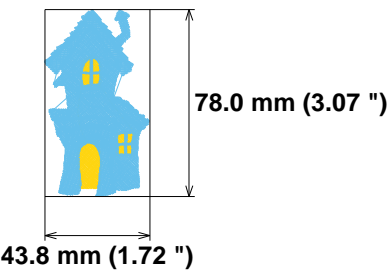
Stitches ratio diagram:



- (92) Stop 1
- (181) Stop 2
- (1473) Stop 3
- (2972) End



Needle Thread consumption File: 1 (5).jef (Janome)
1 866 st. 13.1% (3.7 m) **Stitches: 7563**
2 6697 st. 86.9% (24.8 m) **Size: 43.8 x 78.0 mm (1.72 x 3.07 ")**
Begin: 21.9, 39.0 mm
Upper thread 28.5 m **End: 40.5, 27.9 mm**
Bobbin 9.5 m **Start needle: 1**
Colors: 2/2 , Stops: 1
Date: 12/15/2022



Histogram

Stitches ratio diagram:

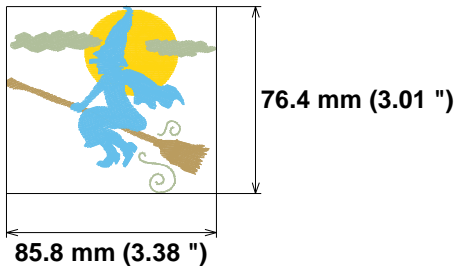


(867) Stop 1
(7563) End



Needle Thread consumption File: 1 (6).jef (Janome)
Stitches: 6725
Size: 85.8 x 76.4 mm (3.38 x 3.01 ")
Begin: 43.0, 38.3 mm
End: 68.5, 26.7 mm
Start needle: 1
Colors: 4/4 , Stops: 3
Date: 12/15/2022

1	1619 st.	25.4% (7.3 m)
2	920 st.	11.9% (3.4 m)
3	3099 st.	45.9% (13.2 m)
4	1087 st.	16.8% (4.8 m)
Upper thread	28.9 m	
Bobbin	9.6 m	



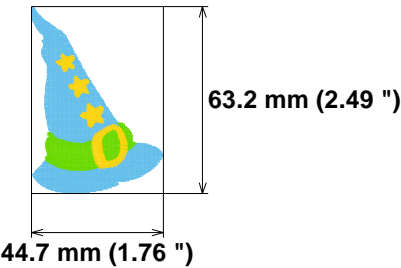
Histogram

Stitches ratio diagram:

- (1620) Stop 1
- (2540) Stop 2
- (5639) Stop 3
- (6725) End



Needle Thread consumption File: 1 (7).jef (Janome)
1 2687 st. 69.1% (11.9 m) **Stitches: 4172**
2 890 st. 19.8% (3.4 m) **Size: 44.7 x 63.2 mm (1.76 x 2.49 ")**
3 595 st. 11.1% (1.9 m) **Begin: 22.3, 31.6 mm**
End: 8.5, 44.4 mm
Upper thread 17.2 m **Start needle: 1**
Bobbin 5.7 m **Colors: 3/3 , Stops: 2**
Date: 12/15/2022

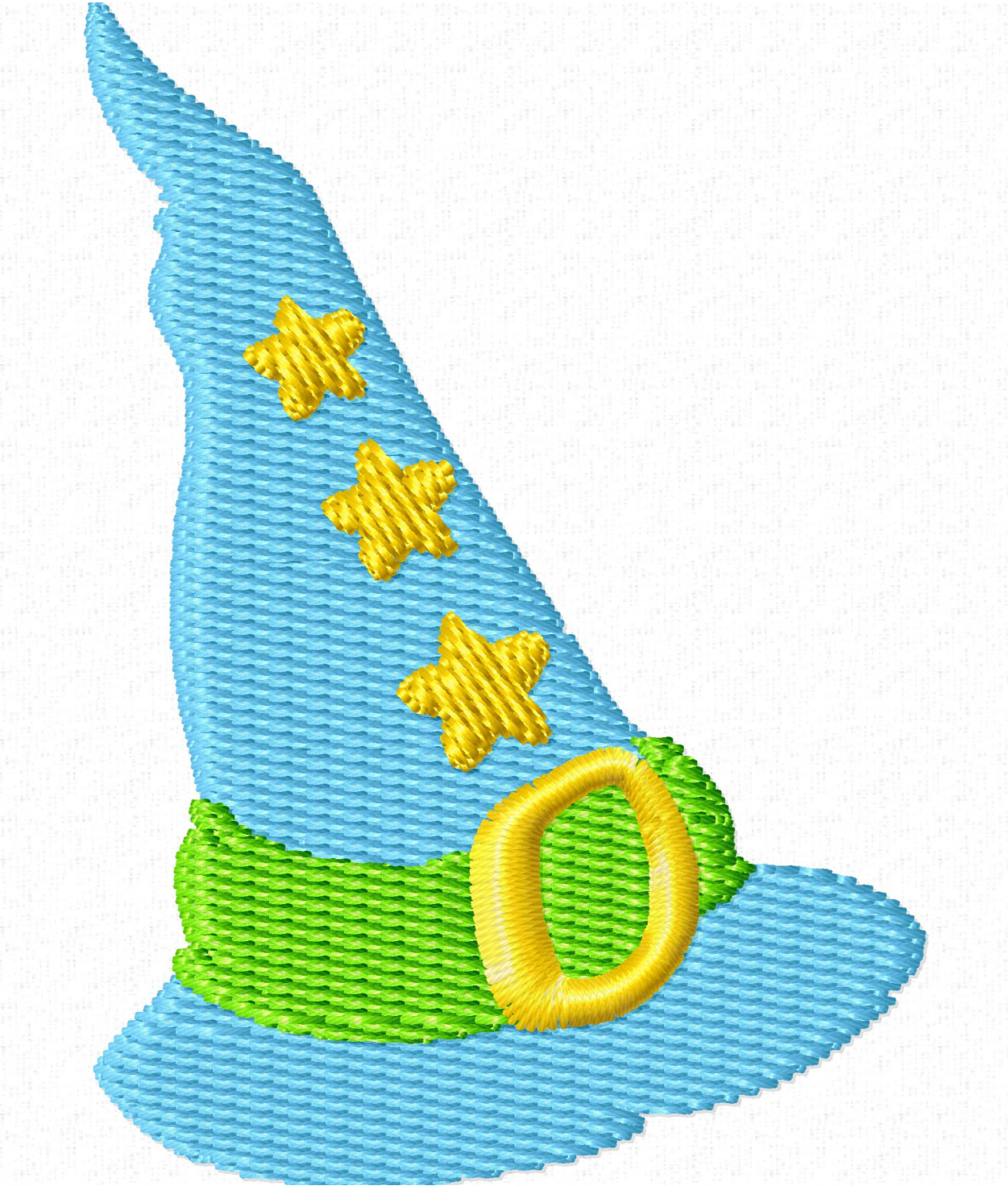


Histogram

Stitches ratio diagram:



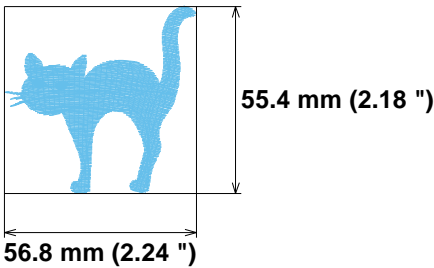
- (2688) Stop 1
- (3578) Stop 2
- (4172) End



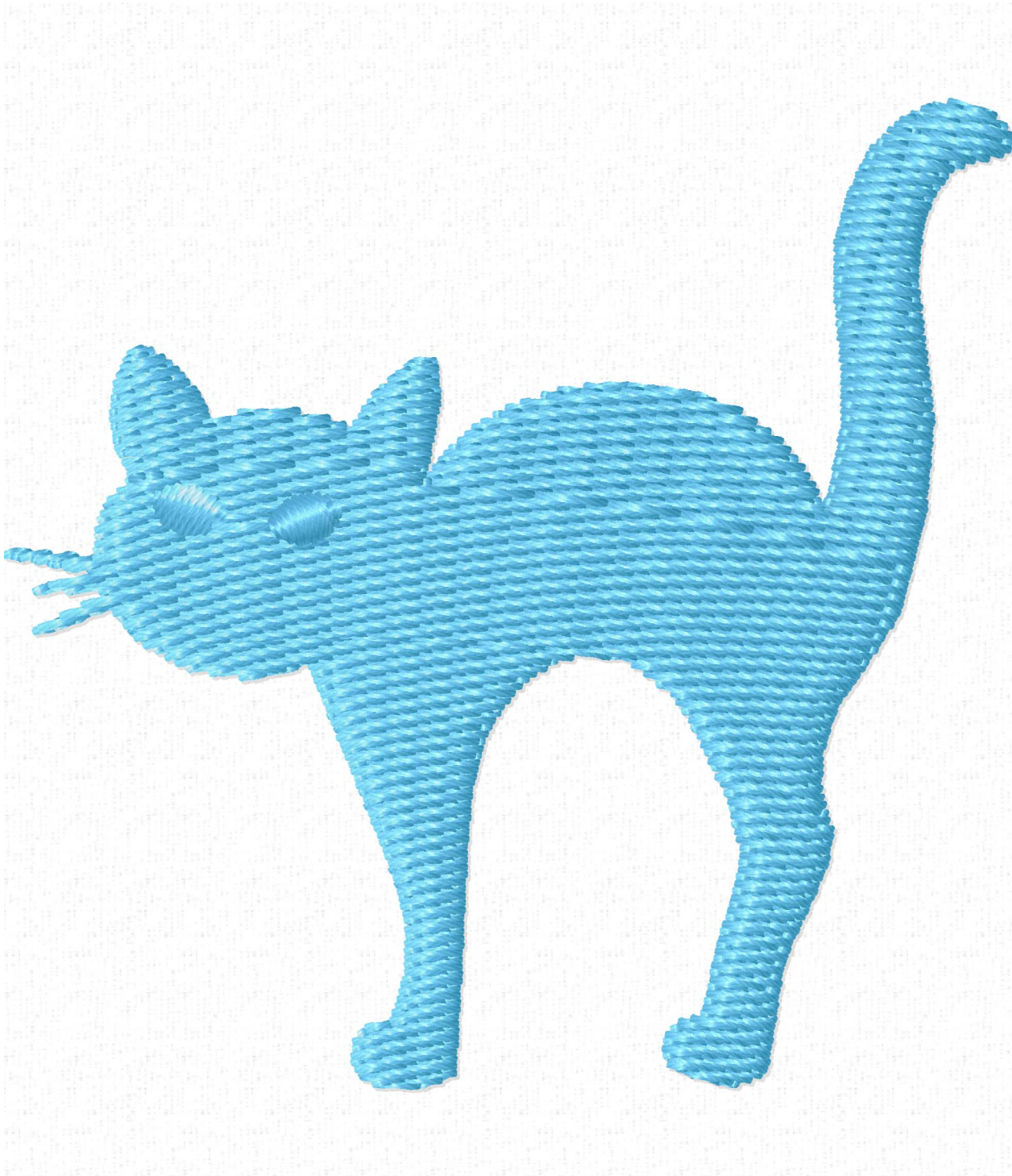
Needle Thread consumption File: 1 (8).jef (Janome)
1 ■ 2491 st. 100.0% (11.1 m) Stitches: 2491
Upper thread 11.1 m Size: 56.8 x 55.4 mm (2.24 x 2.18 ")
Bobbin 3.7 m Begin: 28.4, 27.7 mm
End: 18.7, 32.9 mm
Start needle: 1
Colors: 1/1 , Stops: 0
Date: 12/15/2022



www.zoomembroidery.com



Histogram
(2491) End



Needle Thread consumption File: 1 (9).jef (Janome)

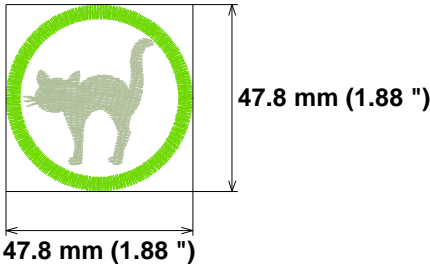
1	81 st.	2.7% (0.3 m)
2	79 st.	2.3% (0.2 m)
3	1145 st.	54.4% (5.8 m)
4	1249 st.	40.6% (4.3 m)

Upper thread 10.6 m
Bobbin 3.5 m

Stitches: 2554
Size: 47.8 x 47.8 mm (1.88 x 1.88 ")
Begin: 23.9, 23.9 mm
End: 13.2, 25.5 mm
Start needle: 1
Colors: 4/4 , Stops: 3
Date: 12/15/2022



www.zoomembroidery.com



Histogram

Stitches ratio diagram:



- (82) Stop 1
- (161) Stop 2
- (1306) Stop 3
- (2554) End

