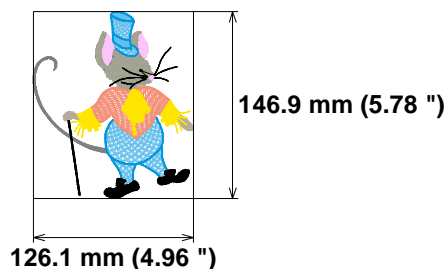


1	345 st.	2.8% (1.5 m)
2	488 st.	4.5% (2.5 m)
3	1482 st.	12.3% (6.7 m)
4	860 st.	7.3% (4.0 m)
5	1592 st.	6.0% (3.3 m)
6	719 st.	4.2% (2.3 m)
7	3872 st.	11.2% (6.1 m)
8	702 st.	4.5% (2.4 m)
9	5639 st.	17.7% (9.6 m)
10	1414 st.	15.9% (8.6 m)
11	1806 st.	13.3% (7.2 m)
12	38 st.	0.2% (0.1 m)

Stitches: 18957
Size: 126.1 x 146.9 mm (4.96 x 5.78 ")
Begin: 63.0, 73.5 mm
End: 95.0, 95.2 mm
Start needle: 1
Colors: 9/12 , **Stops:** 11
Date: 12/19/2022

Upper thread	54.3 m
Bobbin	18.1 m

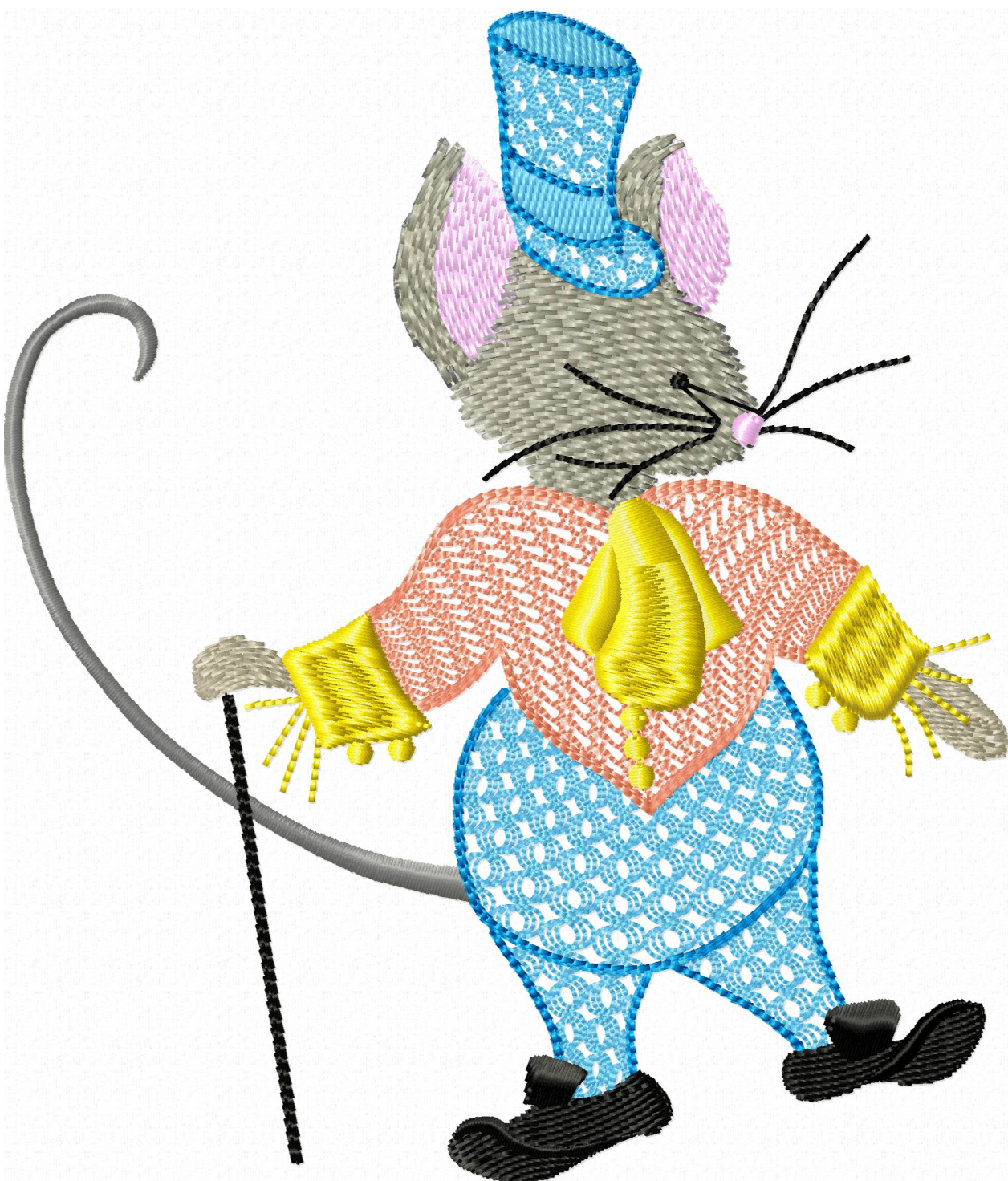


Histogram

Stitches ratio diagram:



(346)	Stop 1
(834)	Stop 2
(2316)	Stop 3
(3176)	Stop 4
(4768)	Stop 5
(5487)	Stop 6
(9359)	Stop 7
(10061)	Stop 8
(15700)	Stop 9
(17114)	Stop 10
(18920)	Stop 11
(18957)	End

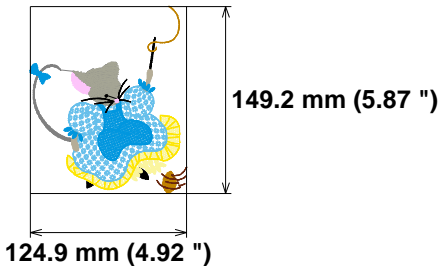


Needle Thread consumption File: 1 (10).jef (Janome)

1	136 st.	1.9% (0.8 m)
2	2524 st.	16.6% (7.5 m)
3	896 st.	6.6% (3.0 m)
4	7616 st.	23.9% (10.7 m)
5	5234 st.	16.0% (7.2 m)
6	207 st.	2.3% (1.0 m)
7	1078 st.	10.2% (4.6 m)
8	649 st.	6.5% (2.9 m)
9	354 st.	2.5% (1.1 m)
10	553 st.	4.5% (2.0 m)
11	382 st.	3.1% (1.4 m)
12	414 st.	3.9% (1.7 m)
13	215 st.	1.5% (0.7 m)
14	33 st.	0.5% (0.2 m)

Stitches: 20291
Size: 124.9 x 149.2 mm (4.92 x 5.87 ")
Begin: 62.4, 74.6 mm
End: 67.8, 74.1 mm
Start needle: 1
Colors: 11/14 , Stops: 13
Date: 12/19/2022

Upper thread 44.8 m
Bobbin 14.9 m

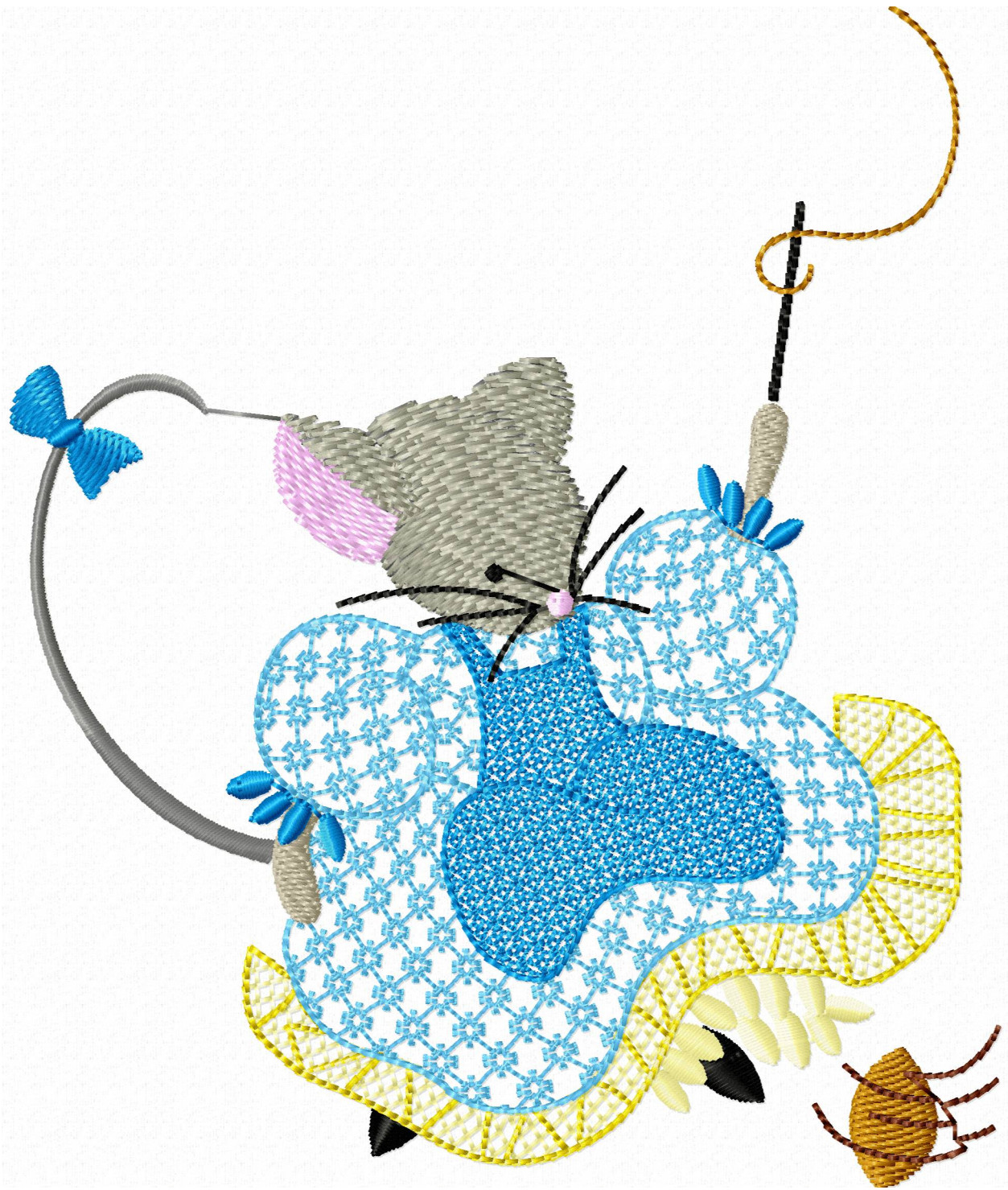


Histogram

Stitches ratio diagram:



- (137) Stop 1
- (2661) Stop 2
- (3557) Stop 3
- (11173) Stop 4
- (16407) Stop 5
- (16614) Stop 6
- (17692) Stop 7
- (18341) Stop 8
- (18695) Stop 9
- (19248) Stop 10
- (19630) Stop 11
- (20044) Stop 12
- (20259) Stop 13
- (20291) End

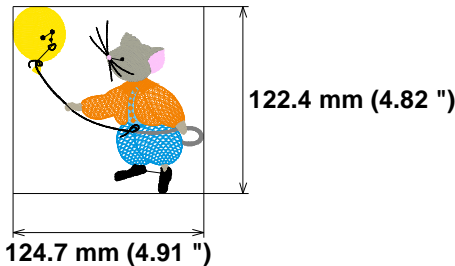


Needle Thread consumption File: 1 (11).jef (Janome)

1	500 st.	3.1% (1.1 m)
2	2674 st.	14.4% (5.2 m)
3	3018 st.	24.6% (8.9 m)
4	199 st.	2.4% (0.9 m)
5	915 st.	10.9% (3.9 m)
6	542 st.	6.9% (2.5 m)
7	296 st.	2.9% (1.1 m)
8	1331 st.	18.4% (6.7 m)
9	1687 st.	16.1% (5.8 m)
10	26 st.	0.2% (0.1 m)

Stitches: 11188
Size: 124.7 x 122.4 mm (4.91 x 4.82 ")
Begin: 62.3, 61.2 mm
End: 63.1, 87.5 mm
Start needle: 1
Colors: 9/10 , Stops: 9
Date: 12/19/2022

Upper thread 36.2 m
Bobbin 12.1 m

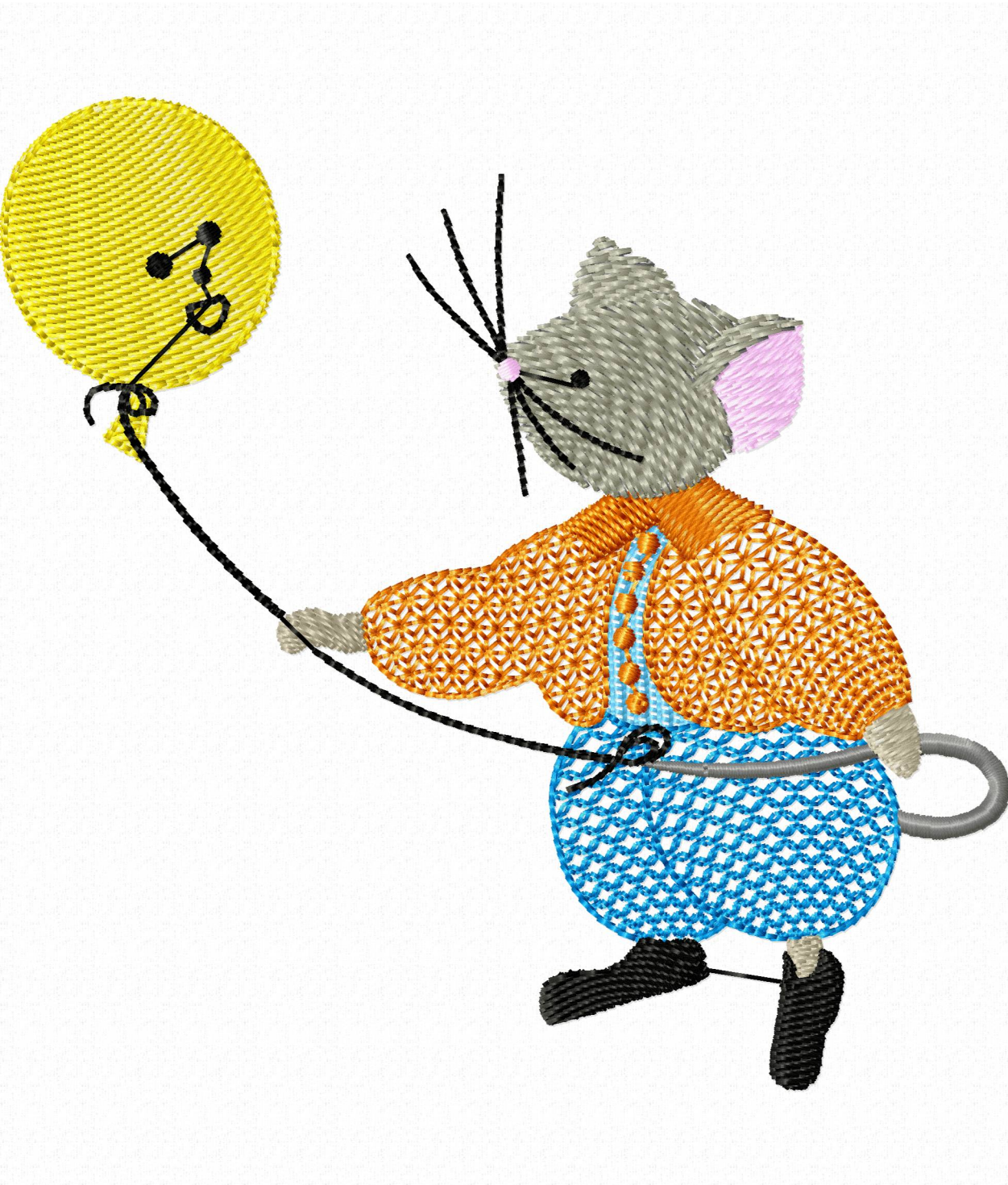


Histogram

Stitches ratio diagram:



(501) Stop 1
(3175) Stop 2
(6193) Stop 3
(6392) Stop 4
(7307) Stop 5
(7849) Stop 6
(8145) Stop 7
(9476) Stop 8
(11163) Stop 9
(11188) End

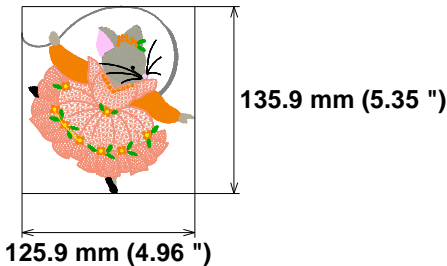


Needle Thread consumption File: 1 (12).jef (Janome)

1	263 st.	1.9% (1.2 m)
2	817 st.	5.4% (3.2 m)
3	420 st.	2.8% (1.7 m)
4	1542 st.	13.0% (7.7 m)
5	12170 st.	48.9% (29.1 m)
6	629 st.	3.8% (2.2 m)
7	800 st.	4.1% (2.4 m)
8	793 st.	6.4% (3.8 m)
9	761 st.	6.2% (3.7 m)
10	98 st.	0.5% (0.3 m)
11	444 st.	1.8% (1.1 m)
12	666 st.	4.1% (2.4 m)
13	186 st.	1.1% (0.6 m)
14	33 st.	0.3% (0.1 m)

Stitches: 19622
Size: 125.9 x 135.9 mm (4.96 x 5.35 ")
Begin: 62.9, 68.0 mm
End: 89.6, 83.5 mm
Start needle: 1
Colors: 9/14 , Stops: 13
Date: 12/19/2022

Upper thread 59.6 m
Bobbin 19.9 m



Histogram

Stitches ratio diagram:



- (264) Stop 1
- (1081) Stop 2
- (1501) Stop 3
- (3043) Stop 4
- (15213) Stop 5
- (15842) Stop 6
- (16642) Stop 7
- (17435) Stop 8
- (18196) Stop 9
- (18294) Stop 10
- (18738) Stop 11
- (19404) Stop 12
- (19590) Stop 13
- (19622) End

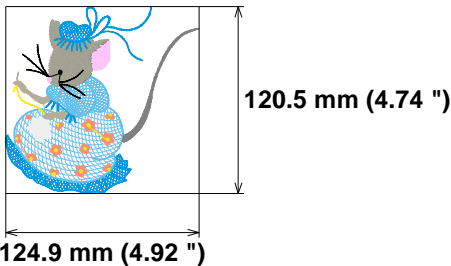


Needle Thread consumption File: 1 (13).jef (Janome)

1	2120 st.	14.7% (5.9 m)
2	3694 st.	24.7% (9.9 m)
3	306 st.	3.0% (1.2 m)
4	1281 st.	14.0% (5.6 m)
5	743 st.	8.4% (3.4 m)
6	405 st.	3.1% (1.2 m)
7	1607 st.	12.6% (5.0 m)
8	280 st.	4.5% (1.8 m)
9	1077 st.	9.3% (3.7 m)
10	336 st.	2.8% (1.1 m)
11	332 st.	2.8% (1.1 m)
12	30 st.	0.2% (0.1 m)

Stitches: 12211
Size: 124.9 x 120.5 mm (4.92 x 4.74 ")
Begin: 62.4, 60.3 mm
End: 27.4, 72.2 mm
Start needle: 1
Colors: 10/12 , Stops: 11
Date: 12/19/2022

Upper thread 40.1 m
Bobbin 13.4 m



Histogram

Stitches ratio diagram:



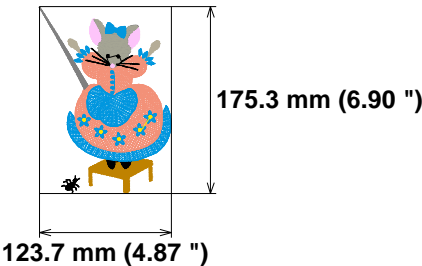
- (2121) Stop 1
- (5815) Stop 2
- (6121) Stop 3
- (7402) Stop 4
- (8145) Stop 5
- (8550) Stop 6
- (10157) Stop 7
- (10437) Stop 8
- (11514) Stop 9
- (11850) Stop 10
- (12182) Stop 11
- (12211) End



Needle Thread consumption File: 1 (14).jef (Janome)
Stitches: 26806
Size: 123.7 x 175.3 mm (4.87 x 6.90 ")
Begin: 61.8, 87.7 mm
End: 68.2, 120.7 mm
Start needle: 1
Colors: 9/12 , Stops: 11
Date: 12/19/2022

1	1827 st.	9.7% (7.3 m)
2	588 st.	3.5% (2.7 m)
3	4151 st.	9.9% (7.5 m)
4	9927 st.	36.1% (27.3 m)
5	635 st.	3.2% (2.4 m)
6	1232 st.	8.0% (6.0 m)
7	727 st.	4.5% (3.4 m)
8	478 st.	2.1% (1.6 m)
9	6696 st.	20.5% (15.5 m)
10	132 st.	0.6% (0.5 m)
11	383 st.	1.8% (1.3 m)
12	30 st.	0.1% (0.1 m)

Upper thread 75.6 m
Bobbin 25.2 m



Histogram

Stitches ratio diagram:



- (1828) Stop 1
- (2416) Stop 2
- (6567) Stop 3
- (16494) Stop 4
- (17129) Stop 5
- (18361) Stop 6
- (19088) Stop 7
- (19566) Stop 8
- (26262) Stop 9
- (26394) Stop 10
- (26777) Stop 11
- (26806) End

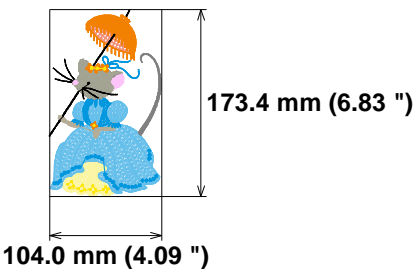


Needle Thread consumption File: 1 (15).jef (Janome)

1	1740 st.	7.8% (5.2 m)
2	8242 st.	36.5% (24.7 m)
3	436 st.	2.2% (1.5 m)
4	2308 st.	12.3% (8.3 m)
5	220 st.	1.5% (1.0 m)
6	1280 st.	8.6% (5.8 m)
7	759 st.	5.4% (3.6 m)
8	1194 st.	3.0% (2.0 m)
9	2521 st.	16.2% (10.9 m)
10	412 st.	1.9% (1.3 m)
11	756 st.	4.2% (2.8 m)
12	44 st.	0.3% (0.2 m)

Stitches: 19912
Size: 104.0 x 173.4 mm (4.09 x 6.83 ")
Begin: 52.0, 86.7 mm
End: 26.6, 105.6 mm
Start needle: 1
Colors: 11/12 , Stops: 11
Date: 12/19/2022

Upper thread 67.6 m
Bobbin 22.5 m



Histogram

Stitches ratio diagram:



(1741) Stop 1
(9983) Stop 2
(10419) Stop 3
(12727) Stop 4
(12947) Stop 5
(14227) Stop 6
(14986) Stop 7
(16180) Stop 8
(18701) Stop 9
(19113) Stop 10
(19869) Stop 11
(19912) End

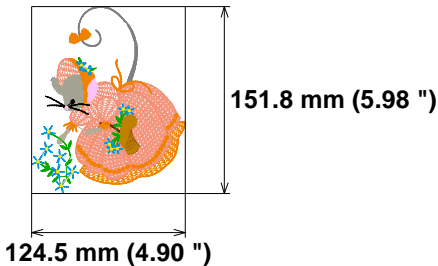


Needle Thread consumption File: 1 (16).jef (Janome)

1	1815 st.	7.0% (3.9 m)
2	9122 st.	41.4% (23.3 m)
3	1000 st.	7.6% (4.3 m)
4	410 st.	3.3% (1.8 m)
5	374 st.	1.8% (1.0 m)
6	1554 st.	11.7% (6.6 m)
7	176 st.	1.4% (0.8 m)
8	328 st.	2.0% (1.1 m)
9	546 st.	5.7% (3.2 m)
10	805 st.	4.3% (2.4 m)
11	286 st.	1.7% (0.9 m)
12	1573 st.	8.8% (4.9 m)
13	306 st.	1.8% (1.0 m)
14	213 st.	1.3% (0.7 m)
15	32 st.	0.1% (0.1 m)

Upper thread	56.2 m
Bobbin	18.7 m

Stitches: 18540
Size: 124.5 x 151.8 mm (4.90 x 5.98 ")
Begin: 62.2, 75.9 mm
End: 29.7, 68.7 mm
Start needle: 1
Colors: 12/15 , Stops: 14
Date: 12/19/2022

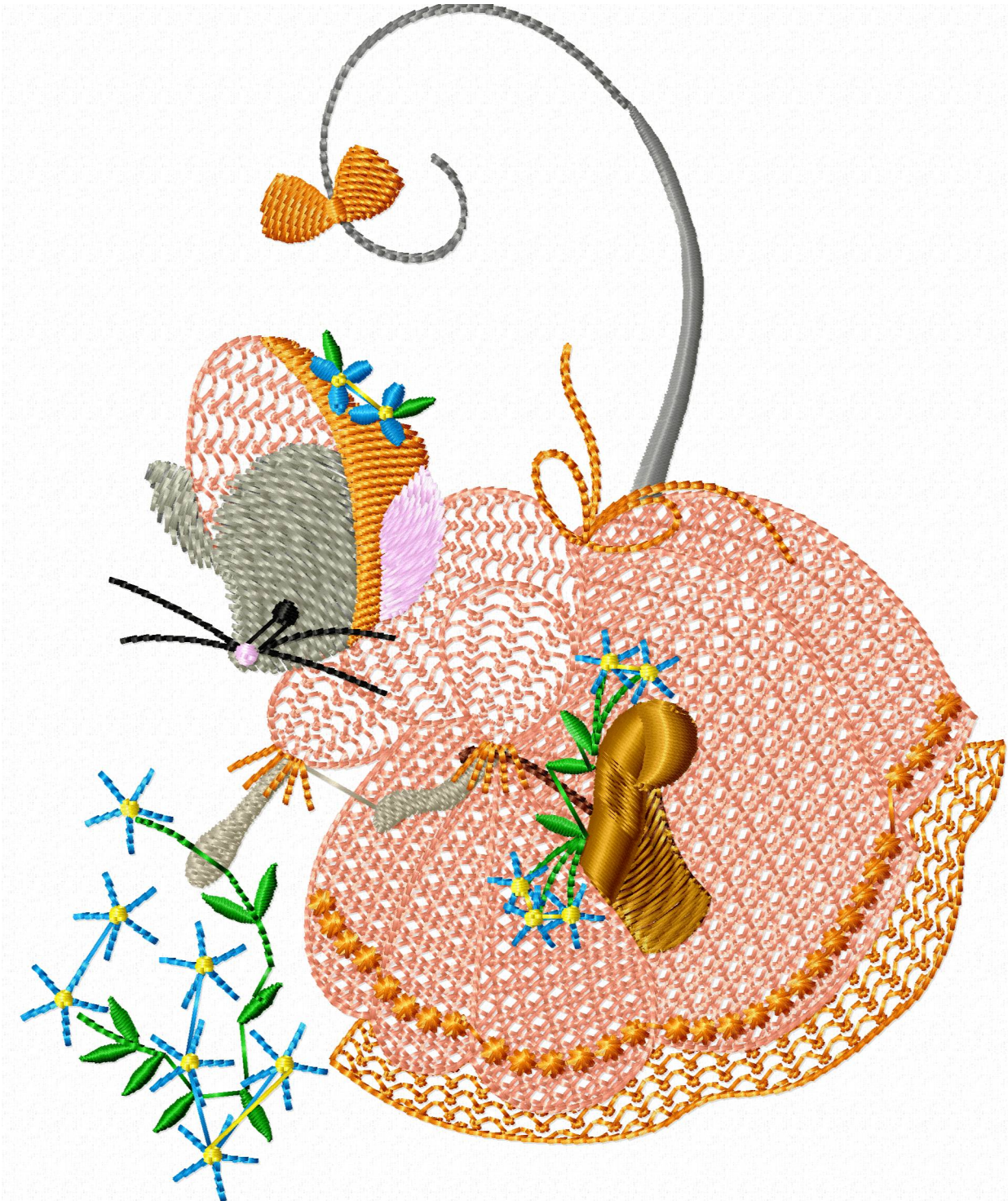


Histogram

Stitches ratio diagram:



(1816) Stop 1
(10938) Stop 2
(11938) Stop 3
(12348) Stop 4
(12722) Stop 5
(14276) Stop 6
(14452) Stop 7
(14780) Stop 8
(15326) Stop 9
(16131) Stop 10
(16417) Stop 11
(17990) Stop 12
(18296) Stop 13
(18509) Stop 14
(18540) End

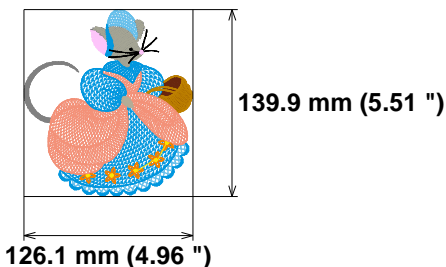


Needle Thread consumption File: 1 (17).jef (Janome)

1	1999 st.	6.9% (4.6 m)
2	230 st.	1.4% (0.9 m)
3	1024 st.	7.4% (4.9 m)
4	540 st.	3.4% (2.3 m)
5	4179 st.	15.2% (10.1 m)
6	776 st.	5.6% (3.7 m)
7	716 st.	4.1% (2.8 m)
8	12576 st.	39.7% (26.5 m)
9	2456 st.	8.1% (5.4 m)
10	1079 st.	5.3% (3.5 m)
11	125 st.	0.6% (0.4 m)
12	128 st.	0.7% (0.5 m)
13	290 st.	1.5% (1.0 m)
14	30 st.	0.1% (0.1 m)

Upper thread 66.8 m
Bobbin 22.3 m

Stitches: 26148
Size: 126.1 x 139.9 mm (4.96 x 5.51 ")
Begin: 63.0, 70.0 mm
End: 86.5, 107.8 mm
Start needle: 1
Colors: 12/14 , Stops: 13
Date: 12/19/2022



Histogram

Stitches ratio diagram:



- (2000) Stop 1
- (2230) Stop 2
- (3254) Stop 3
- (3794) Stop 4
- (7973) Stop 5
- (8749) Stop 6
- (9465) Stop 7
- (22041) Stop 8
- (24497) Stop 9
- (25576) Stop 10
- (25701) Stop 11
- (25829) Stop 12
- (26119) Stop 13
- (26148) End



Needle Thread consumption File: 1 (18).jef (Janome)

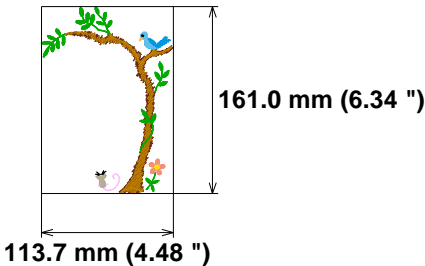
1	2027 st.	36.4% (7.9 m)
2	746 st.	12.9% (2.8 m)
3	1712 st.	29.9% (6.5 m)
4	233 st.	5.2% (1.1 m)
5	148 st.	2.4% (0.5 m)
6	204 st.	4.7% (1.0 m)
7	71 st.	1.0% (0.2 m)
8	25 st.	1.0% (0.2 m)
9	27 st.	0.2% (0.1 m)
10	125 st.	2.4% (0.5 m)
11	229 st.	3.5% (0.8 m)
12	38 st.	0.4% (0.1 m)

Upper thread 21.8 m
Bobbin 7.3 m

Stitches: 5585
Size: 113.7 x 161.0 mm (4.48 x 6.34 ")
Begin: 56.8, 80.5 mm
End: 49.9, 15.7 mm
Start needle: 1
Colors: 11/12 , Stops: 11
Date: 12/19/2022



www.zoomembroidery.com

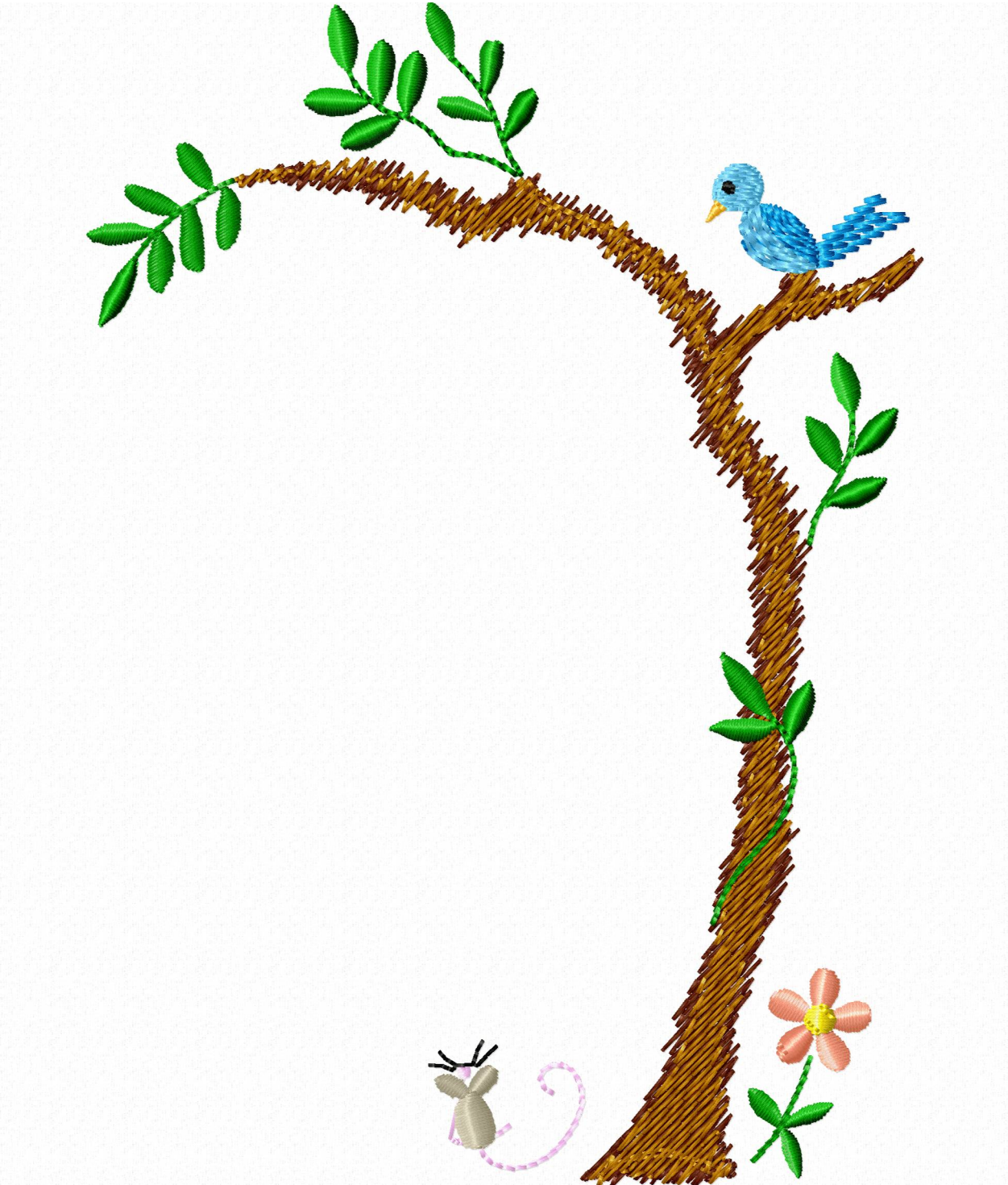


Histogram

Stitches ratio diagram:

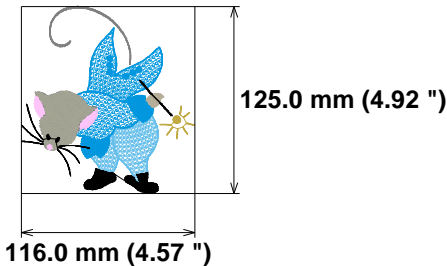


- (2028) Stop 1
- (2774) Stop 2
- (4486) Stop 3
- (4719) Stop 4
- (4867) Stop 5
- (5071) Stop 6
- (5142) Stop 7
- (5167) Stop 8
- (5194) Stop 9
- (5319) Stop 10
- (5548) Stop 11
- (5585) End



Needle Thread consumption File: 1 (19).jef (Janome)
Stitches: 12614
Size: 116.0 x 125.0 mm (4.57 x 4.92 ")
Begin: 58.0, 62.5 mm
End: 20.5, 29.9 mm
Start needle: 1
Colors: 8/9 , Stops: 8
Date: 12/19/2022

Upper thread 34.1 m
Bobbin 11.4 m

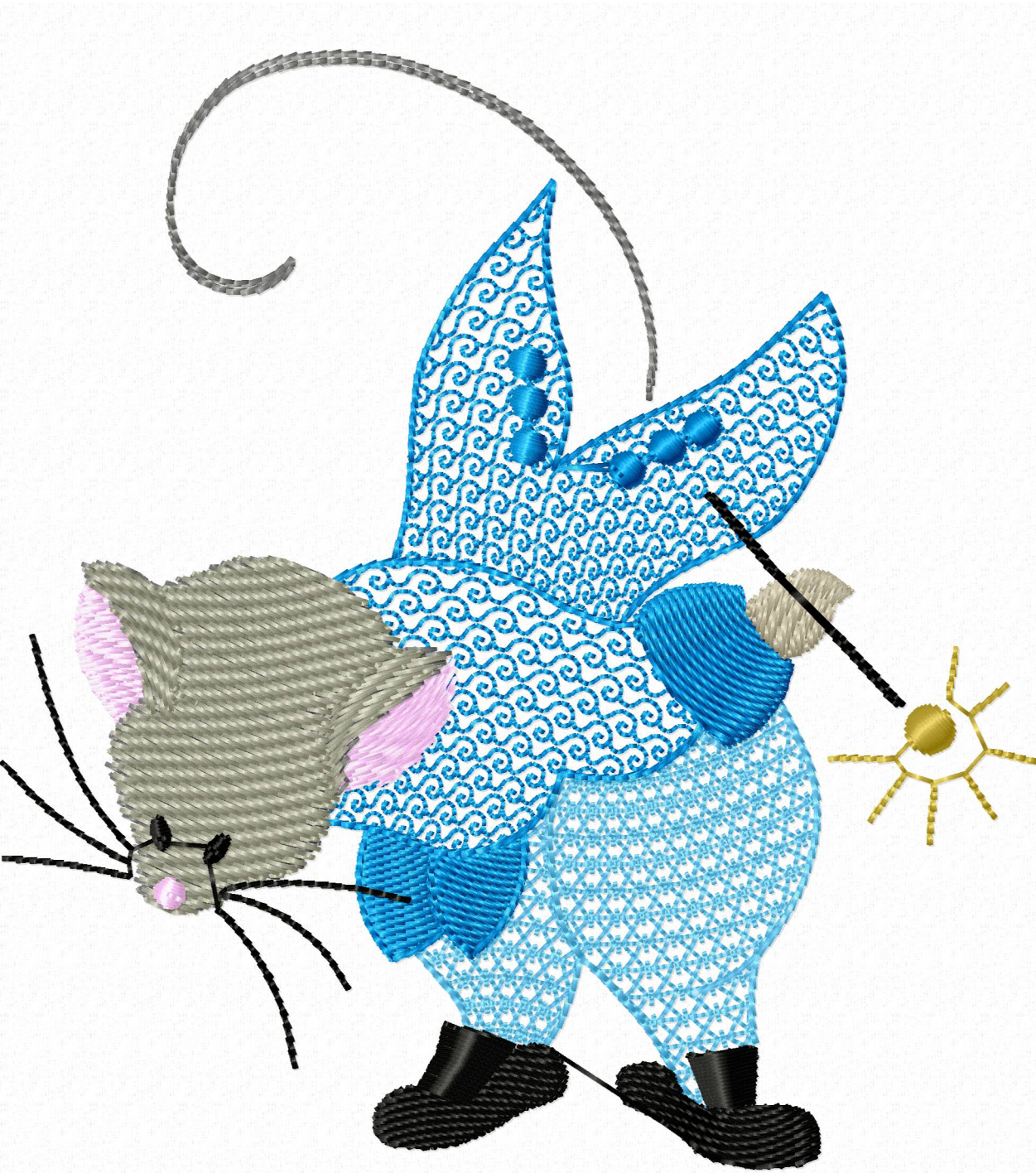


Histogram

Stitches ratio diagram:



- (3129) Stop 1
- (8455) Stop 2
- (8808) Stop 3
- (9953) Stop 4
- (10688) Stop 5
- (10853) Stop 6
- (11108) Stop 7
- (12582) Stop 8
- (12614) End

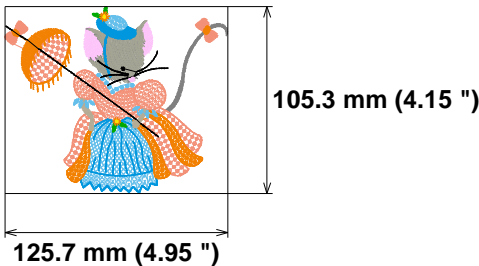


Needle Thread consumption File: 1 (2).jef (Janome)

1	480 st.	3.3% (1.7 m)
2	1006 st.	7.8% (4.0 m)
3	623 st.	5.1% (2.7 m)
4	4944 st.	19.6% (10.1 m)
5	2762 st.	15.0% (7.7 m)
6	1454 st.	10.5% (5.4 m)
7	2780 st.	15.6% (8.1 m)
8	344 st.	1.8% (0.9 m)
9	599 st.	2.5% (1.3 m)
10	160 st.	1.2% (0.6 m)
11	1391 st.	5.6% (2.9 m)
12	1173 st.	8.0% (4.1 m)
13	474 st.	3.2% (1.7 m)
14	50 st.	0.4% (0.2 m)
15	32 st.	0.3% (0.1 m)

Upper thread 51.7 m
Bobbin 17.2 m

Stitches: 18272
Size: 125.7 x 105.3 mm (4.95 x 4.15 ")
Begin: 62.8, 52.7 mm
End: 70.0, 64.3 mm
Start needle: 1
Colors: 11/15 , Stops: 14
Date: 12/19/2022

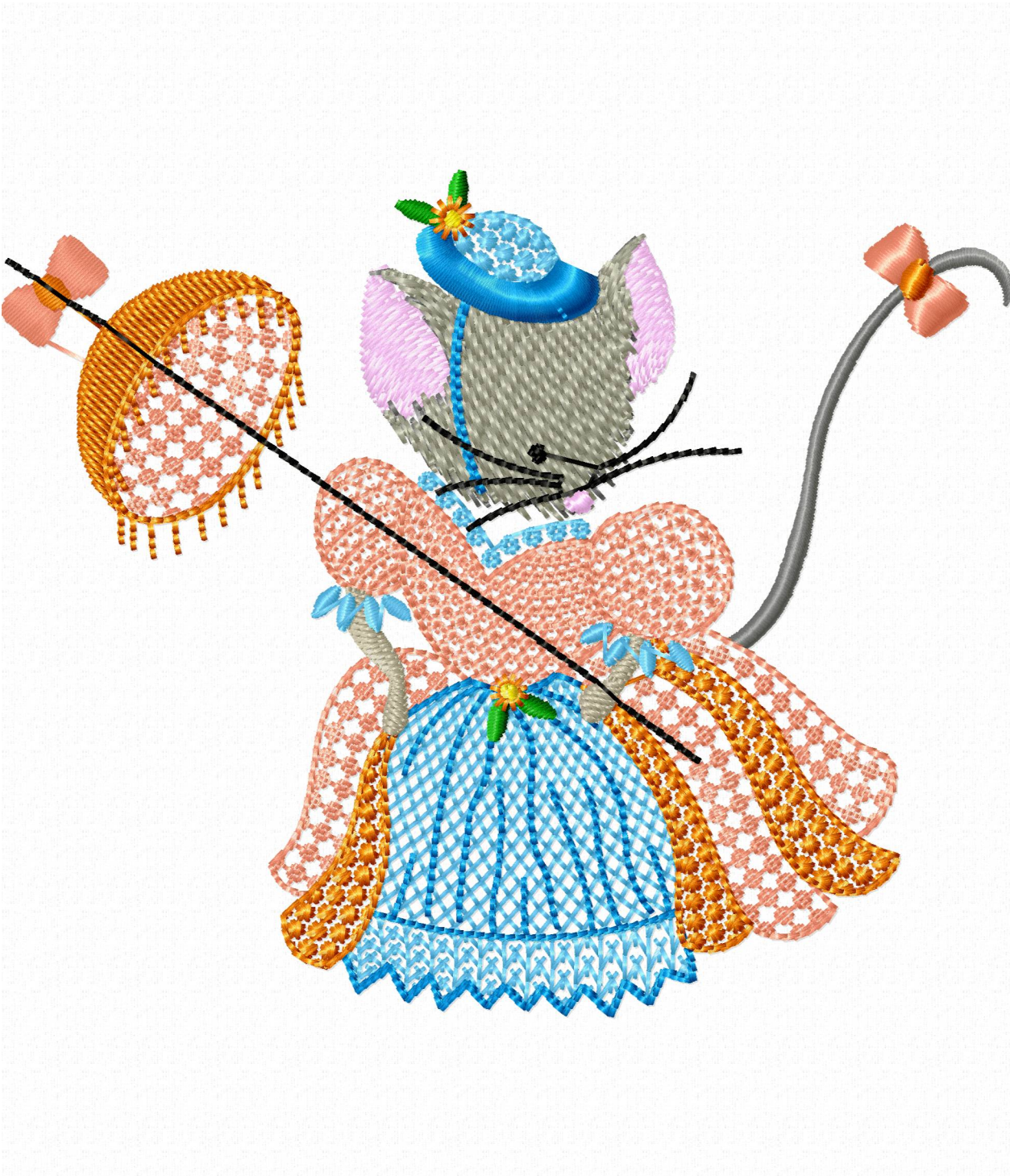


Histogram

Stitches ratio diagram:



- (481) Stop 1
- (1487) Stop 2
- (2110) Stop 3
- (7054) Stop 4
- (9816) Stop 5
- (11270) Stop 6
- (14050) Stop 7
- (14394) Stop 8
- (14993) Stop 9
- (15153) Stop 10
- (16544) Stop 11
- (17717) Stop 12
- (18191) Stop 13
- (18241) Stop 14
- (18272) End



Needle Thread consumption File: 1 (20).jef (Janome)

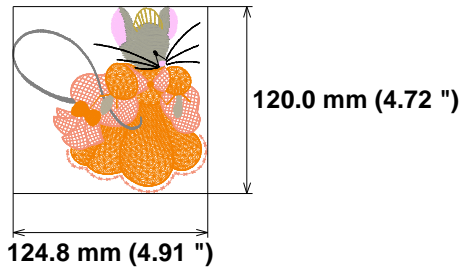
1	470 st.	4.0%	(1.9 m)
2	649 st.	6.8%	(3.3 m)
3	659 st.	6.8%	(3.2 m)
4	6038 st.	36.3%	(17.4 m)
5	4464 st.	26.3%	(12.6 m)
6	805 st.	6.3%	(3.0 m)
7	327 st.	2.3%	(1.1 m)
8	739 st.	6.0%	(2.9 m)
9	246 st.	1.7%	(0.8 m)
10	463 st.	3.3%	(1.6 m)
11	33 st.	0.2%	(0.1 m)

Upper thread 47.8 m
Bobbin 15.9 m

Stitches: 14893
Size: 124.8 x 120.0 mm (4.91 x 4.72 ")
Begin: 62.4, 60.0 mm
End: 97.4, 84.2 mm
Start needle: 1
Colors: 8/11 , Stops: 10
Date: 12/19/2022



www.zoomembroidery.com

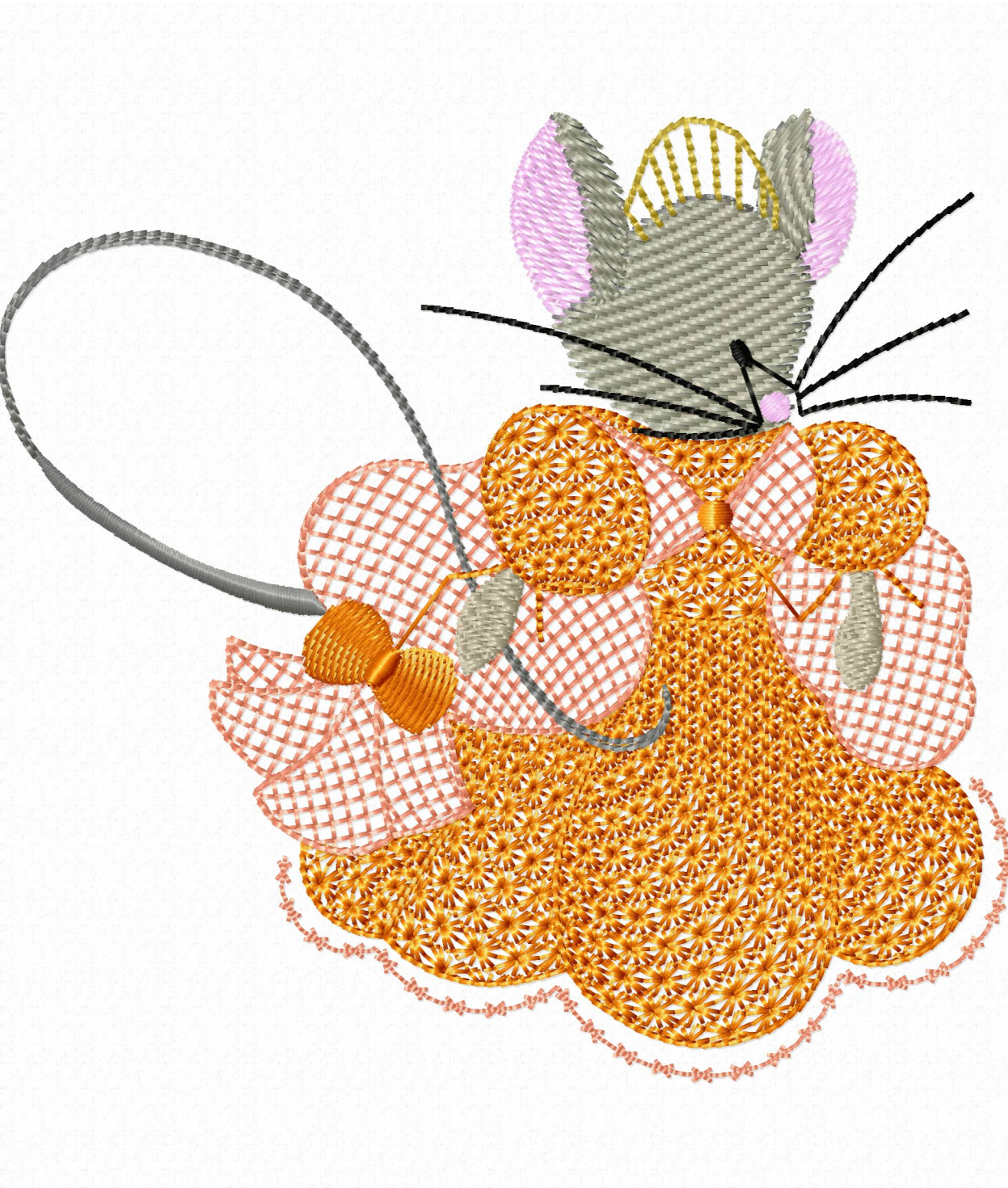


Histogram

Stitches ratio diagram:



- (471) Stop 1
- (1120) Stop 2
- (1779) Stop 3
- (7817) Stop 4
- (12281) Stop 5
- (13086) Stop 6
- (13413) Stop 7
- (14152) Stop 8
- (14398) Stop 9
- (14861) Stop 10
- (14893) End

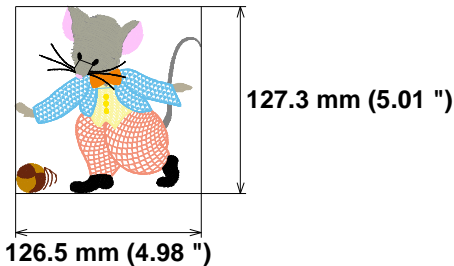


Needle Thread consumption File: 1 (3).jef (Janome)

1	340 st.	2.7% (1.4 m)
2	505 st.	5.0% (2.5 m)
3	1495 st.	14.1% (7.0 m)
4	1118 st.	11.0% (5.5 m)
5	2402 st.	18.6% (9.3 m)
6	1800 st.	6.1% (3.0 m)
7	172 st.	1.3% (0.6 m)
8	3380 st.	17.8% (8.9 m)
9	686 st.	5.8% (2.9 m)
10	32 st.	0.2% (0.1 m)
11	1264 st.	10.8% (5.4 m)
12	369 st.	2.9% (1.5 m)
13	494 st.	3.7% (1.8 m)

Stitches: 14057
Size: 126.5 x 127.3 mm (4.98 x 5.01 ")
Begin: 63.2, 63.7 mm
End: 27.4, 12.9 mm
Start needle: 1
Colors: 12/13 , Stops: 12
Date: 12/19/2022

Upper thread 49.8 m
Bobbin 16.6 m



Histogram

Stitches ratio diagram:



- (341) Stop 1
- (846) Stop 2
- (2341) Stop 3
- (3459) Stop 4
- (5861) Stop 5
- (7661) Stop 6
- (7833) Stop 7
- (11213) Stop 8
- (11899) Stop 9
- (11931) Stop 10
- (13195) Stop 11
- (13564) Stop 12
- (14057) End

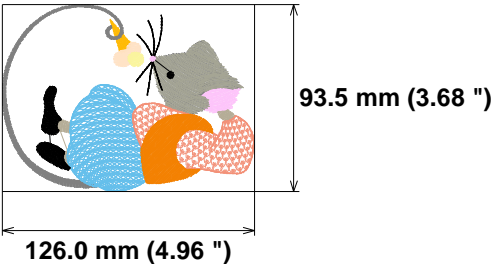


Needle Thread consumption File: 1 (4).jef (Janome)

1	265 st.	2.9% (1.3 m)
2	533 st.	1.7% (0.8 m)
3	222 st.	2.0% (0.9 m)
4	102 st.	0.9% (0.4 m)
5	1858 st.	18.0% (7.8 m)
6	758 st.	8.5% (3.7 m)
7	261 st.	2.2% (1.0 m)
8	3279 st.	29.0% (12.6 m)
9	1738 st.	9.9% (4.3 m)
10	1374 st.	14.8% (6.4 m)
11	1098 st.	10.0% (4.4 m)
12	28 st.	0.2% (0.1 m)

Stitches: 11516
Size: 126.0 x 93.5 mm (4.96 x 3.68 ")
Begin: 63.0, 46.8 mm
End: 75.5, 67.6 mm
Start needle: 1
Colors: 11/12 , Stops: 11
Date: 12/19/2022

Upper thread 43.5 m
Bobbin 14.5 m

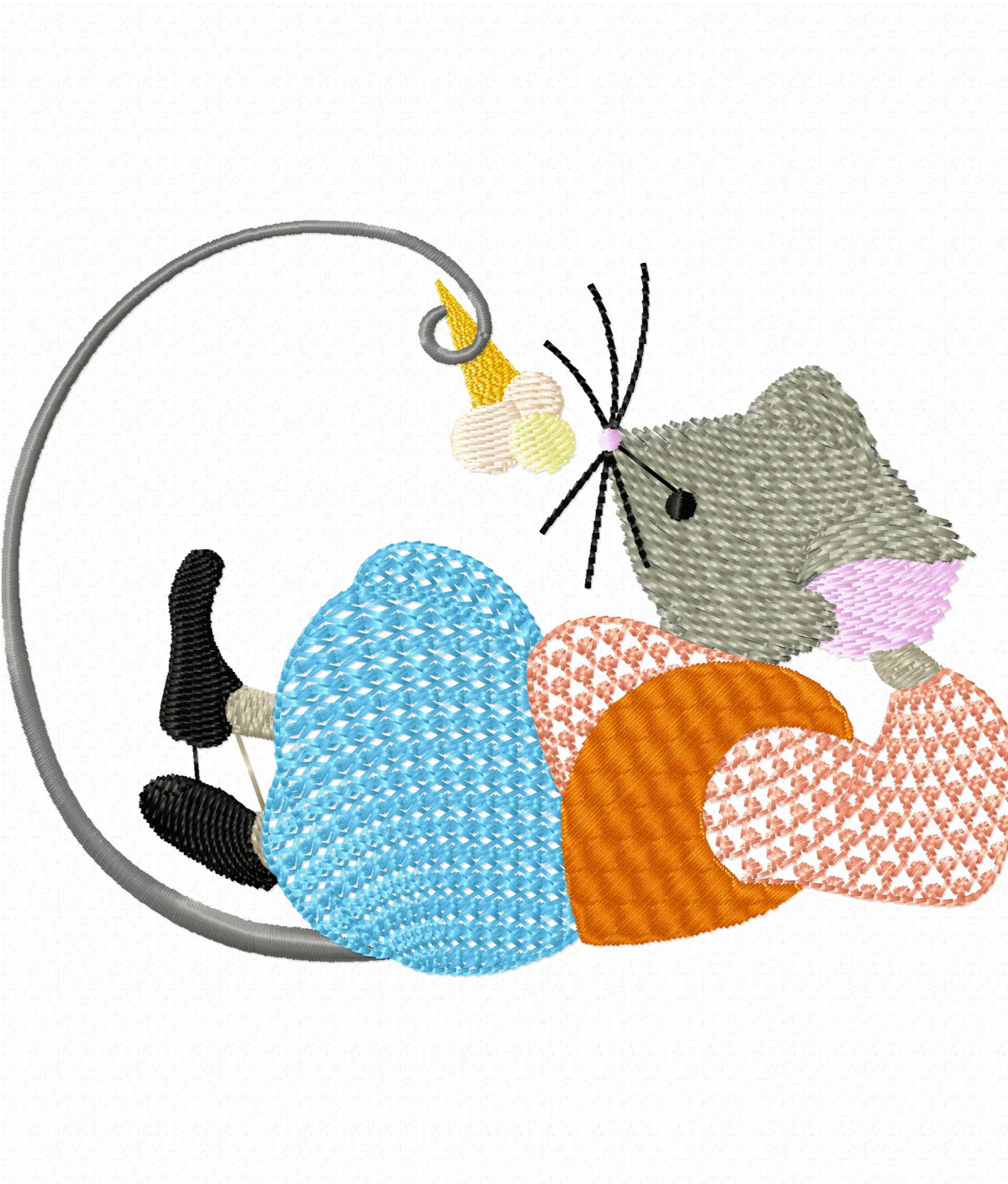


Histogram

Stitches ratio diagram:



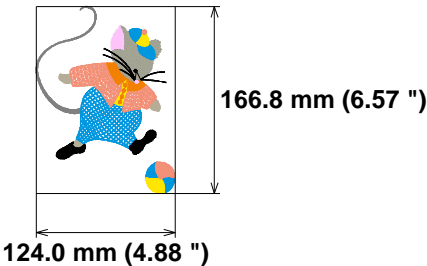
- (266) Stop 1
- (799) Stop 2
- (1021) Stop 3
- (1123) Stop 4
- (2981) Stop 5
- (3739) Stop 6
- (4000) Stop 7
- (7279) Stop 8
- (9017) Stop 9
- (10391) Stop 10
- (11489) Stop 11
- (11516) End



Needle Thread consumption File: 1 (5).jef (Janome)
Stitches: 18971
Size: 124.0 x 166.8 mm (4.88 x 6.57 ")
Begin: 62.0, 83.4 mm
End: 88.5, 99.6 mm
Start needle: 1
Colors: 9/10 , Stops: 9
Date: 12/19/2022

1	381 st.	2.6% (1.5 m)
2	1844 st.	12.8% (7.2 m)
3	1020 st.	7.3% (4.1 m)
4	449 st.	3.5% (2.0 m)
5	8709 st.	23.9% (13.5 m)
6	986 st.	7.6% (4.3 m)
7	3542 st.	25.4% (14.3 m)
8	602 st.	6.1% (3.4 m)
9	1402 st.	10.5% (5.9 m)
10	36 st.	0.4% (0.2 m)

Upper thread 56.5 m
Bobbin 18.8 m



Histogram

Stitches ratio diagram:



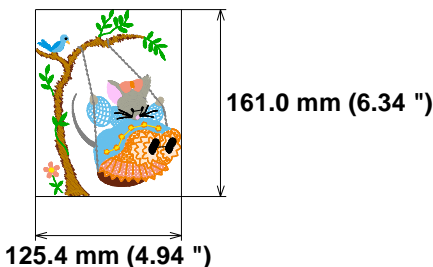
- (382) Stop 1
- (2226) Stop 2
- (3246) Stop 3
- (3695) Stop 4
- (12404) Stop 5
- (13390) Stop 6
- (16932) Stop 7
- (17534) Stop 8
- (18936) Stop 9
- (18971) End



Needle Thread consumption File: 1 (6).jef (Janome)

1	2686 st.	16.2% (10.5 m)
2	747 st.	4.4% (2.8 m)
3	1711 st.	10.0% (6.5 m)
4	233 st.	1.7% (1.1 m)
5	148 st.	0.8% (0.5 m)
6	1403 st.	4.0% (2.6 m)
7	1464 st.	5.9% (3.9 m)
8	928 st.	4.2% (2.7 m)
9	2920 st.	18.1% (11.7 m)
10	626 st.	3.6% (2.3 m)
11	750 st.	3.2% (2.1 m)
12	239 st.	1.7% (1.1 m)
13	195 st.	1.1% (0.7 m)
14	1843 st.	8.7% (5.6 m)
15	587 st.	4.2% (2.7 m)
16	386 st.	3.7% (2.4 m)
17	358 st.	2.1% (1.3 m)
18	205 st.	1.3% (0.8 m)
19	880 st.	4.9% (3.2 m)
20	25 st.	0.1% (0.0 m)
21	33 st.	0.3% (0.2 m)

Stitches: 18367
Size: 125.4 x 161.0 mm (4.94 x 6.34 ")
Begin: 62.7, 80.5 mm
End: 89.0, 67.4 mm
Start needle: 1
Colors: 15/21 , Stops: 20
Date: 12/19/2022



Upper thread 65.0 m
Bobbin 21.7 m

Stitches ratio diagram:



Histogram

(2687) Stop 1
(3434) Stop 2
(5145) Stop 3
(5378) Stop 4
(5526) Stop 5
(6929) Stop 6
(8393) Stop 7
(9321) Stop 8
(12241) Stop 9
(12867) Stop 10
(13617) Stop 11
(13856) Stop 12
(14051) Stop 13
(15894) Stop 14
(16481) Stop 15
(16867) Stop 16
(17225) Stop 17
(17430) Stop 18
(18310) Stop 19
(18335) Stop 20
(18367) End

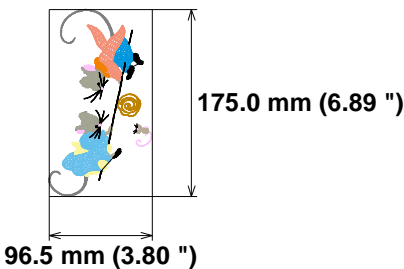


Needle Thread consumption File: 1 (7).jef (Janome)

1	347 st.	3.3% (1.3 m)
2	1661 st.	14.7% (5.7 m)
3	712 st.	7.1% (2.8 m)
4	472 st.	3.8% (1.5 m)
5	667 st.	5.9% (2.3 m)
6	1133 st.	7.6% (3.0 m)
7	2188 st.	13.2% (5.1 m)
8	155 st.	2.7% (1.1 m)
9	652 st.	4.0% (1.5 m)
10	3451 st.	21.3% (8.3 m)
11	269 st.	2.4% (0.9 m)
12	1543 st.	13.4% (5.2 m)
13	44 st.	0.6% (0.2 m)

Stitches: 13294
Size: 96.5 x 175.0 mm (3.80 x 6.89 ")
Begin: 48.2, 87.5 mm
End: 48.4, 67.3 mm
Start needle: 1
Colors: 11/13 , Stops: 12
Date: 12/19/2022

Upper thread 38.9 m
Bobbin 13.0 m



Histogram

Stitches ratio diagram:



- (348) Stop 1
- (2009) Stop 2
- (2721) Stop 3
- (3193) Stop 4
- (3860) Stop 5
- (4993) Stop 6
- (7181) Stop 7
- (7336) Stop 8
- (7988) Stop 9
- (11439) Stop 10
- (11708) Stop 11
- (13251) Stop 12
- (13294) End

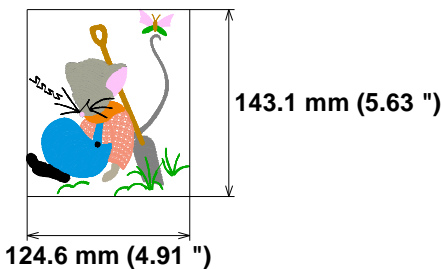


Needle Thread consumption File: 1 (8).jef (Janome)

1	1250 st.	10.4% (5.8 m)
2	613 st.	6.5% (3.7 m)
3	357 st.	2.8% (1.6 m)
4	912 st.	8.0% (4.5 m)
5	899 st.	7.9% (4.5 m)
6	215 st.	1.5% (0.8 m)
7	2993 st.	9.8% (5.5 m)
8	3729 st.	28.8% (16.2 m)
9	440 st.	3.8% (2.1 m)
10	1362 st.	9.7% (5.5 m)
11	259 st.	3.5% (2.0 m)
12	1174 st.	7.0% (4.0 m)
13	101 st.	0.4% (0.2 m)

Stitches: 14304
Size: 124.6 x 143.1 mm (4.91 x 5.63 ")
Begin: 62.3, 71.6 mm
End: 97.9, 126.5 mm
Start needle: 1
Colors: 10/13 , Stops: 12
Date: 12/19/2022

Upper thread 56.3 m
Bobbin 18.8 m



Histogram

Stitches ratio diagram:



- (1251) Stop 1
- (1864) Stop 2
- (2221) Stop 3
- (3133) Stop 4
- (4032) Stop 5
- (4247) Stop 6
- (7240) Stop 7
- (10969) Stop 8
- (11409) Stop 9
- (12771) Stop 10
- (13030) Stop 11
- (14204) Stop 12
- (14304) End

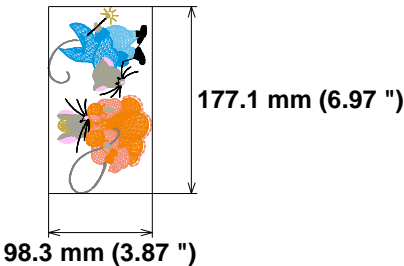


Needle Thread consumption File: 1 (9).jef (Janome)

1	295 st.	2.2% (1.1 m)
2	403 st.	3.6% (1.8 m)
3	419 st.	3.7% (1.9 m)
4	3620 st.	20.2% (10.2 m)
5	2881 st.	15.4% (7.8 m)
6	617 st.	4.2% (2.1 m)
7	222 st.	1.3% (0.7 m)
8	553 st.	3.7% (1.9 m)
9	1842 st.	5.4% (2.7 m)
10	3218 st.	13.9% (7.0 m)
11	256 st.	1.7% (0.9 m)
12	774 st.	6.5% (3.3 m)
13	471 st.	4.3% (2.2 m)
14	103 st.	0.8% (0.4 m)
15	403 st.	2.7% (1.4 m)
16	1407 st.	9.9% (5.0 m)
17	56 st.	0.4% (0.2 m)

Stitches: 17540
Size: 98.3 x 177.1 mm (3.87 x 6.97 ")
Begin: 49.1, 88.6 mm
End: 71.2, 106.1 mm
Start needle: 1
Colors: 10/17 , Stops: 16
Date: 12/19/2022

Upper thread 50.6 m
Bobbin 16.9 m



Histogram

Stitches ratio diagram:



- (296) Stop 1
- (699) Stop 2
- (1118) Stop 3
- (4738) Stop 4
- (7619) Stop 5
- (8236) Stop 6
- (8458) Stop 7
- (9011) Stop 8
- (10853) Stop 9
- (14071) Stop 10
- (14327) Stop 11
- (15101) Stop 12
- (15572) Stop 13
- (15675) Stop 14
- (16078) Stop 15
- (17485) Stop 16
- (17540) End

