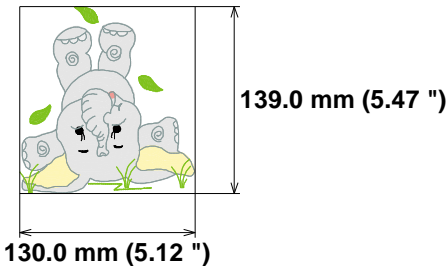


Needle Thread consumption File: 1 (4).jef (Janome)

1	9065 st.	65.8% (38.0 m)
2	1411 st.	10.3% (5.9 m)
3	481 st.	4.9% (2.8 m)
4	51 st.	0.5% (0.3 m)
5	257 st.	1.6% (0.9 m)
6	2254 st.	9.7% (5.6 m)
7	1277 st.	7.2% (4.2 m)

Upper thread	57.7 m
Bobbin	19.2 m

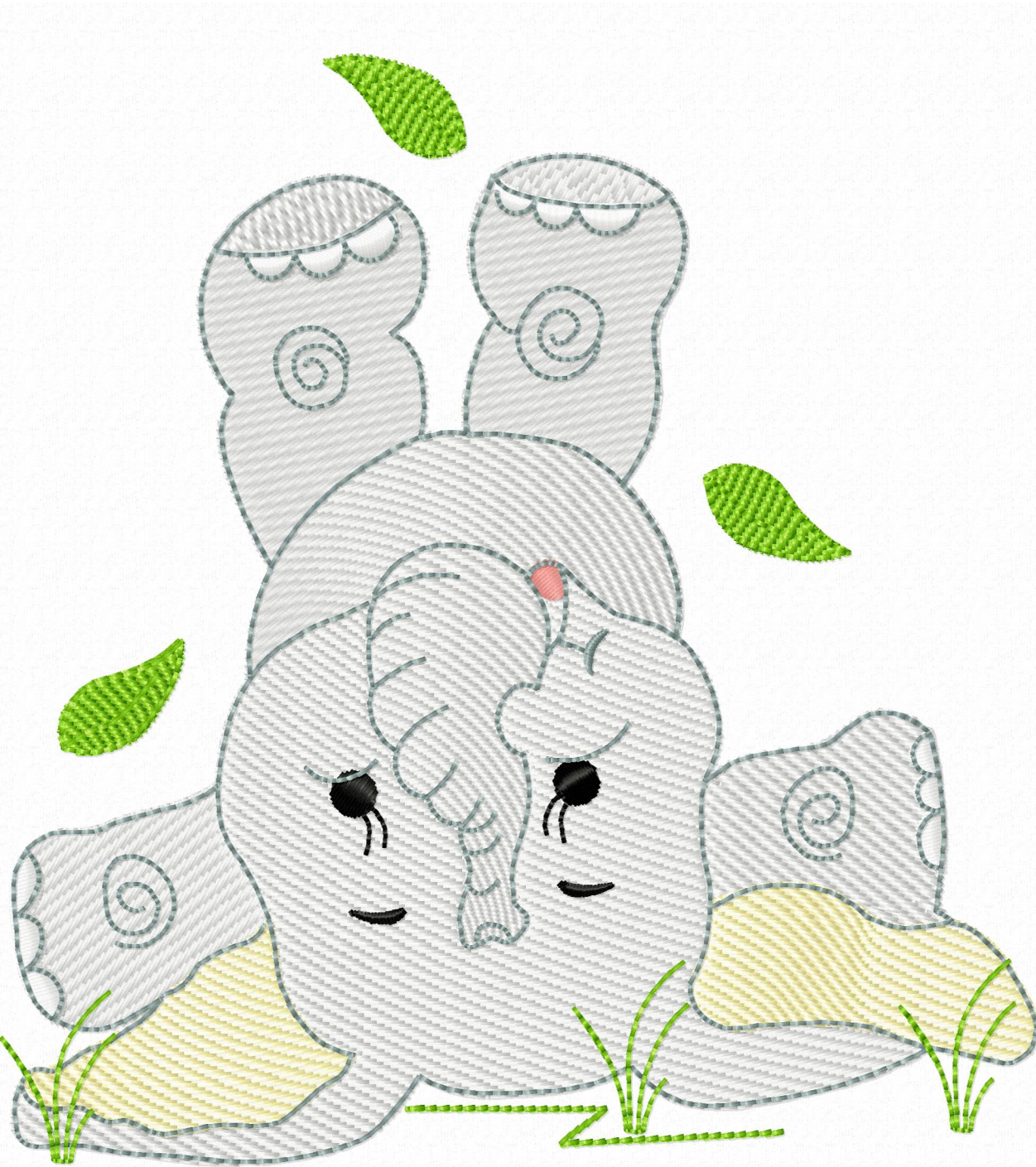
Stitches: 14796
Size: 130.0 x 139.0 mm (5.12 x 5.47 ")
Begin: 65.0, 69.5 mm
End: 57.9, 127.6 mm
Start needle: 1
Colors: 7/7 , Stops: 6
Date: 12/19/2022



Histogram

Stitches ratio diagram:

- (9066) Stop 1
- (10477) Stop 2
- (10958) Stop 3
- (11009) Stop 4
- (11266) Stop 5
- (13520) Stop 6
- (14796) End



Needle Thread consumption File: 2 (4).jef (Janome)

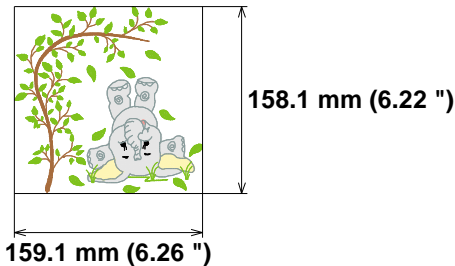
1	5170 st.	36.3% (19.9 m)
2	824 st.	5.7% (3.1 m)
3	368 st.	3.0% (1.6 m)
4	41 st.	0.3% (0.2 m)
5	199 st.	1.0% (0.6 m)
6	1747 st.	7.2% (3.9 m)
7	1669 st.	11.0% (6.0 m)
8	5810 st.	35.5% (19.4 m)

Upper thread 54.7 m
Bobbin 18.2 m

Stitches: 15828
Size: 159.1 x 158.1 mm (6.26 x 6.22 ")
Begin: 79.6, 79.1 mm
End: 111.5, 119.5 mm
Start needle: 1
Colors: 8/8 , Stops: 7
Date: 12/19/2022



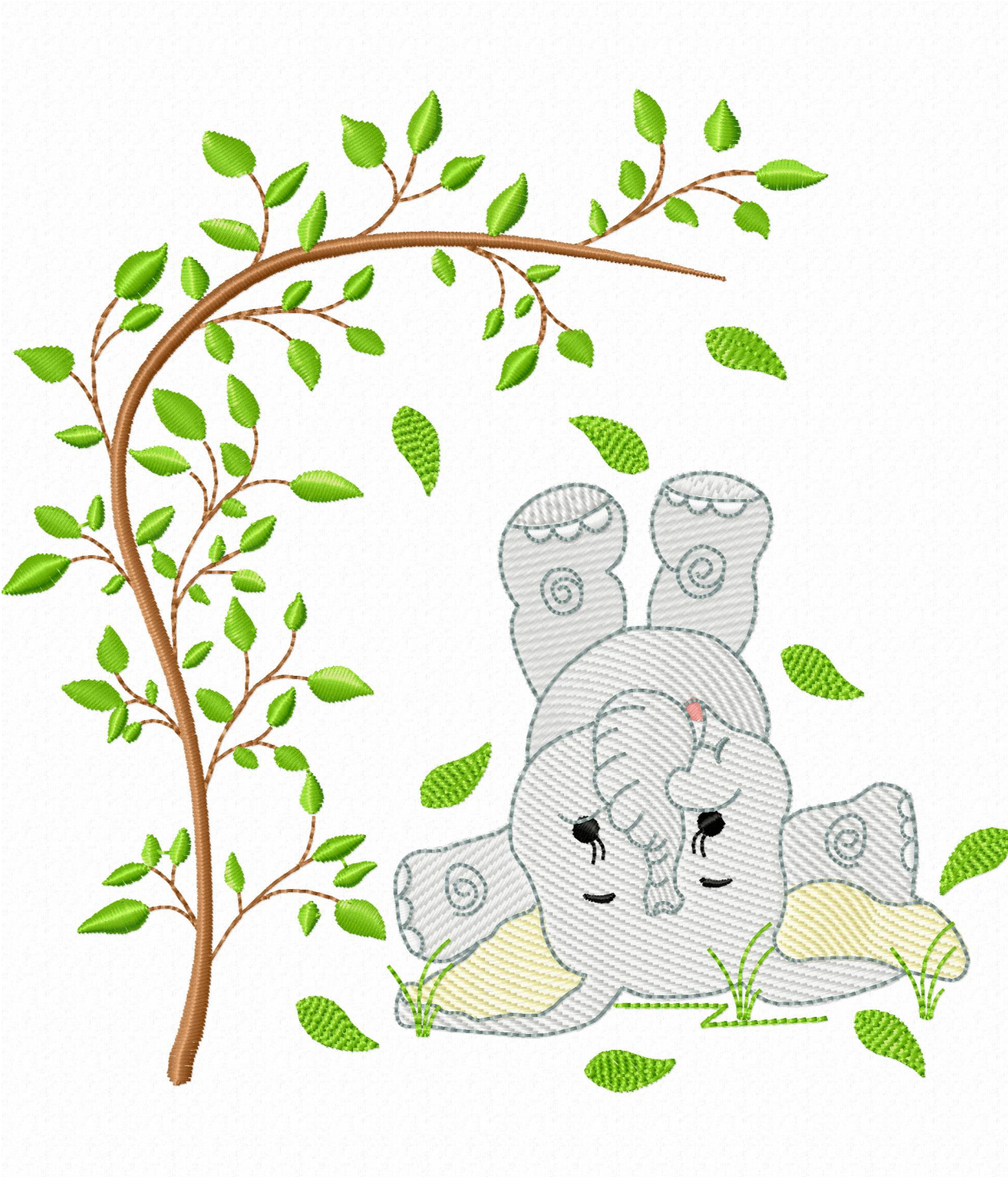
www.zoomembroidery.com



Histogram

Stitches ratio diagram:

- (5171) Stop 1
- (5995) Stop 2
- (6363) Stop 3
- (6404) Stop 4
- (6603) Stop 5
- (8350) Stop 6
- (10019) Stop 7
- (15828) End

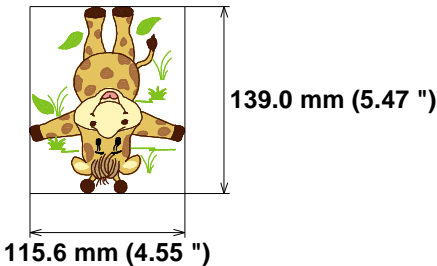


Needle Thread consumption File: 3 (4).jef (Janome)

1	5645 st.	46.6% (25.9 m)
2	1664 st.	12.1% (6.7 m)
3	170 st.	1.2% (0.7 m)
4	2231 st.	10.4% (5.8 m)
5	95 st.	1.1% (0.6 m)
6	2909 st.	15.6% (8.7 m)
7	235 st.	1.2% (0.7 m)
8	2133 st.	11.8% (6.5 m)

Stitches: 15082
Size: 115.6 x 139.0 mm (4.55 x 5.47 ")
Begin: 57.8, 69.5 mm
End: 80.2, 119.2 mm
Start needle: 1
Colors: 8/8 , Stops: 7
Date: 12/19/2022

Upper thread 55.5 m
Bobbin 18.5 m



Histogram

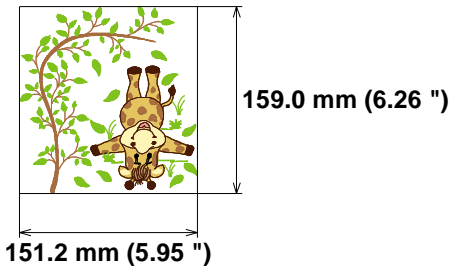
Stitches ratio diagram:

- (5646) Stop 1
- (7310) Stop 2
- (7480) Stop 3
- (9711) Stop 4
- (9806) Stop 5
- (12715) Stop 6
- (12950) Stop 7
- (15082) End



Needle Thread consumption File: 4 (4).jef (Janome)
Stitches: 16906
Size: 151.2 x 159.0 mm (5.95 x 6.26 ")
Begin: 75.6, 79.5 mm
End: 78.0, 10.8 mm
Start needle: 1
Colors: 8/9 , Stops: 8
Date: 12/19/2022

Upper thread 56.3 m
Bobbin 18.8 m



Histogram

Stitches ratio diagram:



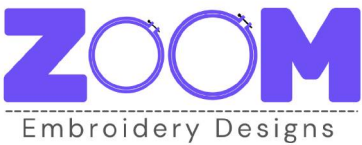
(1690) Stop 1
(4798) Stop 2
(5870) Stop 3
(5988) Stop 4
(7657) Stop 5
(7729) Stop 6
(9966) Stop 7
(10160) Stop 8
(16906) End



Needle Thread consumption File: 5 (4).jef (Janome)

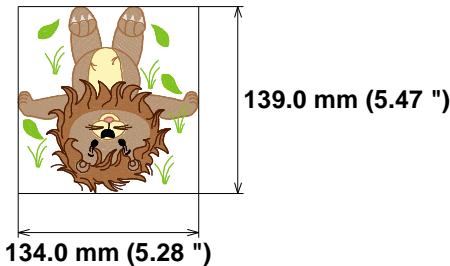
1	6709 st.	37.2% (23.7 m)
2	1648 st.	8.3% (5.3 m)
3	4811 st.	27.0% (17.2 m)
4	344 st.	2.6% (1.6 m)
5	53 st.	0.5% (0.3 m)
6	266 st.	1.3% (0.8 m)
7	1187 st.	5.6% (3.6 m)
8	1909 st.	7.4% (4.7 m)
9	377 st.	2.1% (1.3 m)
10	1572 st.	8.0% (5.1 m)

Stitches: 18876
Size: 134.0 x 139.0 mm (5.28 x 5.47 ")
Begin: 67.0, 69.5 mm
End: 4.5, 54.0 mm
Start needle: 1
Colors: 8/10 , Stops: 9
Date: 12/19/2022



www.zoomembroidery.com

Upper thread 63.6 m
Bobbin 21.2 m



Histogram

Stitches ratio diagram:

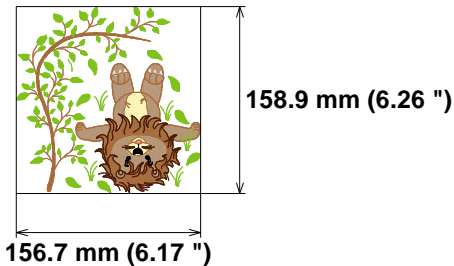


- (6710) Stop 1
- (8358) Stop 2
- (13169) Stop 3
- (13513) Stop 4
- (13566) Stop 5
- (13832) Stop 6
- (15019) Stop 7
- (16928) Stop 8
- (17305) Stop 9
- (18876) End



Needle Thread consumption File: 6 (4).jef (Janome)
Stitches: 20092
Size: 156.7 x 158.9 mm (6.17 x 6.26 ")
Begin: 78.3, 79.6 mm
End: 62.3, 83.7 mm
Start needle: 1
Colors: 8/11 , Stops: 10
Date: 12/19/2022

Upper thread 65.4 m
Bobbin 21.8 m



Histogram

Stitches ratio diagram:



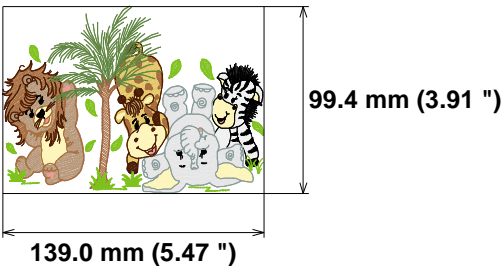
- (1675) Stop 1
- (6246) Stop 2
- (7365) Stop 3
- (10831) Stop 4
- (11110) Stop 5
- (11153) Stop 6
- (11365) Stop 7
- (12371) Stop 8
- (14023) Stop 9
- (14347) Stop 10
- (20092) End



Needle Thread consumption File: 7 (4).jef (Janome)

1	63 st.	0.3% (0.2 m)
2	1834 st.	9.2% (5.9 m)
3	654 st.	2.8% (1.8 m)
4	1385 st.	5.6% (3.6 m)
5	213 st.	1.0% (0.6 m)
6	1004 st.	2.7% (1.8 m)
7	184 st.	0.8% (0.5 m)
8	696 st.	2.1% (1.3 m)
9	62 st.	0.3% (0.2 m)
10	224 st.	0.7% (0.5 m)
11	1127 st.	5.9% (3.8 m)
12	403 st.	1.8% (1.2 m)
13	25 st.	0.1% (0.1 m)
14	1449 st.	6.3% (4.0 m)
15	2757 st.	14.3% (9.2 m)
16	449 st.	2.4% (1.5 m)
17	261 st.	1.4% (0.9 m)
18	34 st.	0.2% (0.1 m)
19	153 st.	0.5% (0.3 m)
20	1274 st.	4.0% (2.5 m)
21	1176 st.	7.3% (4.7 m)
22	83 st.	0.3% (0.2 m)
23	995 st.	2.7% (1.7 m)
24	570 st.	2.7% (1.7 m)
25	49 st.	0.3% (0.2 m)
26	1191 st.	3.9% (2.5 m)
27	161 st.	0.4% (0.3 m)
28	409 st.	1.7% (1.1 m)
29	185 st.	0.9% (0.6 m)
30	1685 st.	8.1% (5.2 m)
31	2107 st.	9.5% (6.1 m)

Stitches: 22862
Size: 139.0 x 99.4 mm (5.47 x 3.91 ")
Begin: 69.5, 49.7 mm
End: 58.5, 22.7 mm
Start needle: 1
Colors: 13/31 , Stops: 30
Date: 12/19/2022



Upper thread 64.3 m
Bobbin 21.4 m

Histogram

(64)	Stop 1
(1898)	Stop 2
(2552)	Stop 3
(3937)	Stop 4
(4150)	Stop 5
(5154)	Stop 6
(5338)	Stop 7
(6034)	Stop 8
(6096)	Stop 9
(6320)	Stop 10
(7447)	Stop 11
(7850)	Stop 12
(7875)	Stop 13
(9324)	Stop 14
(12081)	Stop 15
(12530)	Stop 16
(12791)	Stop 17
(12825)	Stop 18
(12978)	Stop 19
(14252)	Stop 20
(15428)	Stop 21
(15511)	Stop 22
(16506)	Stop 23
(17076)	Stop 24
(17125)	Stop 25
(18316)	Stop 26
(18477)	Stop 27
(18886)	Stop 28
(19071)	Stop 29
(20756)	Stop 30
(22862)	End

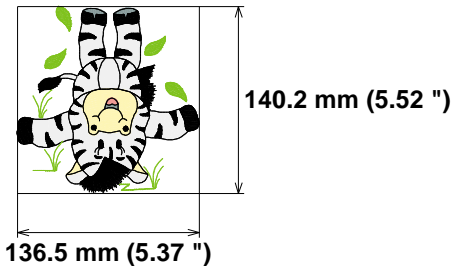


Needle Thread consumption File: 8 (4).jef (Janome)

1	5761 st.	40.5% (26.9 m)
2	1771 st.	9.9% (6.6 m)
3	80 st.	0.6% (0.4 m)
4	564 st.	2.2% (1.5 m)
5	5874 st.	39.4% (26.1 m)
6	1582 st.	7.4% (4.9 m)

Upper thread	66.4 m
Bobbin	22.1 m

Stitches: 15632
Size: 136.5 x 140.2 mm (5.37 x 5.52 ")
Begin: 68.2, 70.1 mm
End: 111.9, 82.3 mm
Start needle: 1
Colors: 6/6 , Stops: 5
Date: 12/19/2022



Histogram

Stitches ratio diagram:

- (5762) Stop 1
- (7533) Stop 2
- (7613) Stop 3
- (8177) Stop 4
- (14051) Stop 5
- (15632) End



Needle Thread consumption File: 9 (4).jef (Janome)

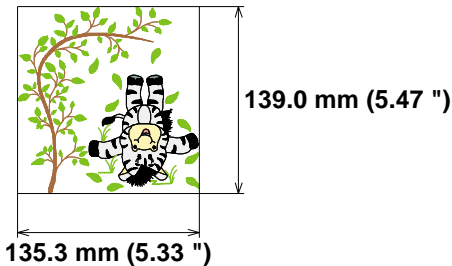
1	2561 st.	22.4% (10.3 m)
2	764 st.	5.5% (2.5 m)
3	54 st.	0.4% (0.2 m)
4	318 st.	1.4% (0.7 m)
5	3363 st.	24.4% (11.2 m)
6	1500 st.	11.1% (5.1 m)
7	5227 st.	34.7% (15.9 m)

Upper thread 45.9 m
Bobbin 15.3 m

Stitches: 13787
Size: 135.3 x 139.0 mm (5.33 x 5.47 ")
Begin: 67.6, 69.5 mm
End: 120.0, 54.3 mm
Start needle: 1
Colors: 7/7 , Stops: 6
Date: 12/19/2022



www.zoomembroidery.com



Histogram

Stitches ratio diagram:

- (2562) Stop 1
- (3326) Stop 2
- (3380) Stop 3
- (3698) Stop 4
- (7061) Stop 5
- (8561) Stop 6
- (13787) End

