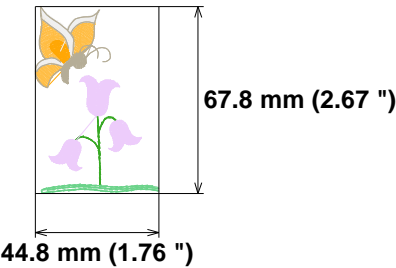


Needle Thread consumption File: 1 (1).jef (Janome)
Stitches: 3331
Size: 44.8 x 67.8 mm (1.76 x 2.67 ")
Begin: 22.4, 33.9 mm
End: 10.0, 40.8 mm
Start needle: 1
Colors: 7/7 , Stops: 6
Date: 1/5/2023

1	137 st.	4.3% (0.5 m)
2	211 st.	7.6% (0.9 m)
3	1340 st.	40.8% (4.7 m)
4	694 st.	18.6% (2.2 m)
5	185 st.	5.8% (0.7 m)
6	374 st.	11.4% (1.3 m)
7	390 st.	11.3% (1.3 m)

Upper thread 11.5 m
Bobbin 3.8 m



Histogram

Stitches ratio diagram:



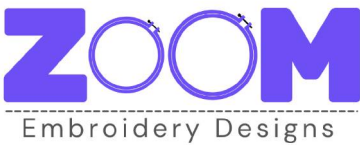
- (138) Stop 1
- (349) Stop 2
- (1689) Stop 3
- (2383) Stop 4
- (2568) Stop 5
- (2942) Stop 6
- (3331) End



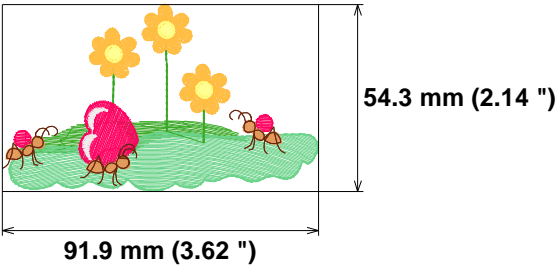
1	328 st.	6.9% (1.5 m)
2	1345 st.	29.5% (6.4 m)
3	133 st.	2.3% (0.5 m)
4	2185 st.	30.4% (6.6 m)
5	313 st.	3.7% (0.8 m)
6	662 st.	12.7% (2.8 m)
7	409 st.	7.8% (1.7 m)
8	473 st.	4.9% (1.1 m)
9	154 st.	1.8% (0.4 m)

Upper thread 21.8 m
Bobbin 7.3 m

Stitches: 6002
Size: 91.9 x 54.3 mm (3.62 x 2.14 ")
Begin: 45.9, 27.2 mm
End: 30.6, 23.4 mm
Start needle: 1
Colors: 8/9 , Stops: 8
Date: 1/5/2023



www.zoomembroidery.com

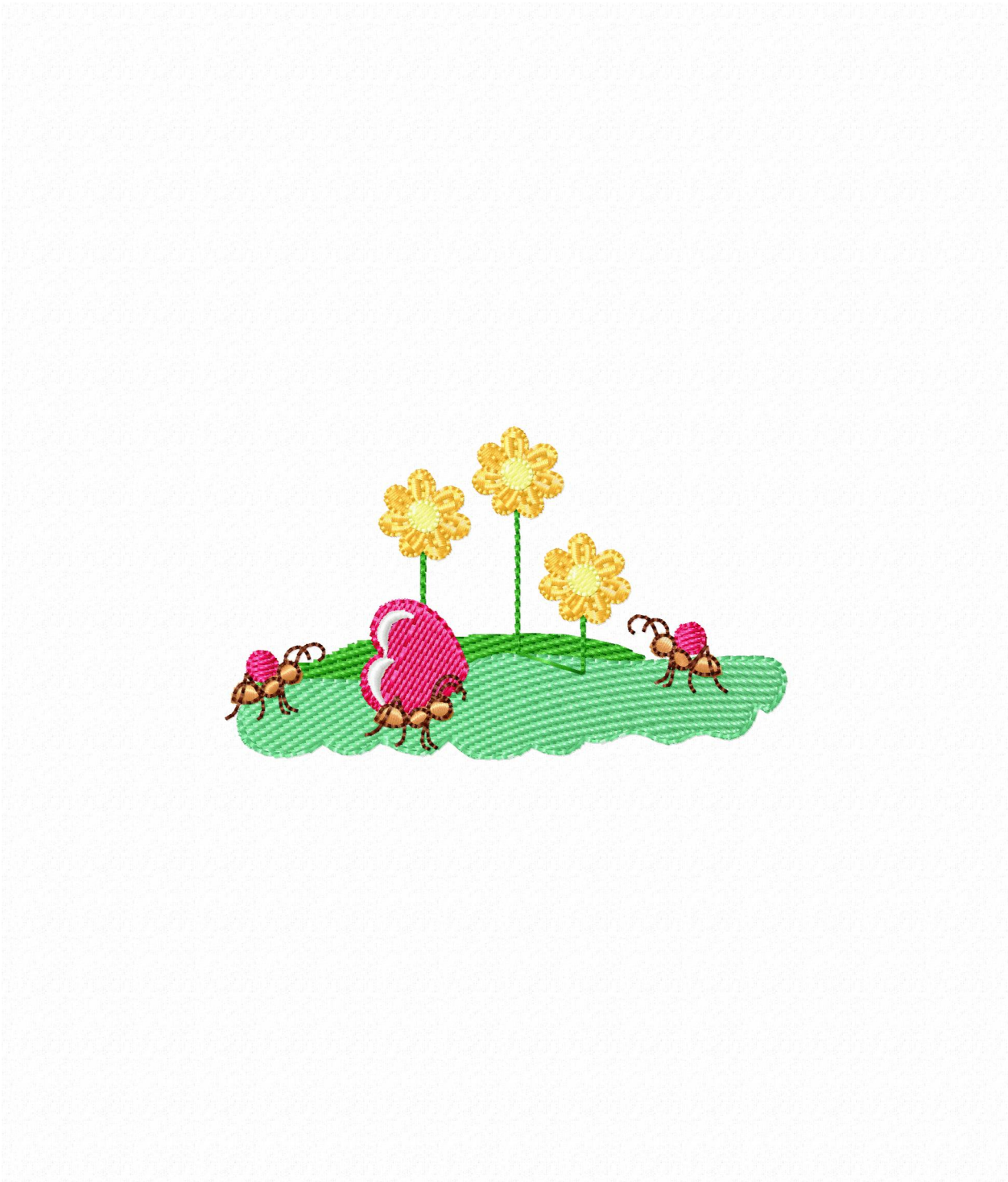


Histogram

Stitches ratio diagram:



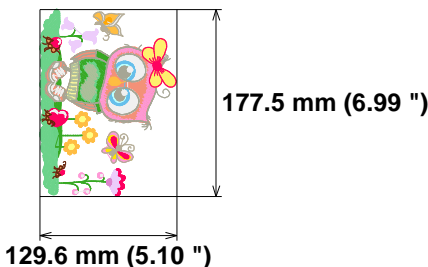
- (329) Stop 1
- (1674) Stop 2
- (1807) Stop 3
- (3992) Stop 4
- (4305) Stop 5
- (4967) Stop 6
- (5376) Stop 7
- (5849) Stop 8
- (6002) End



Needle Thread consumption File: 1 (3).jef (Janome)

1	881 st.	2.9% (3.7 m)
2	2526 st.	9.5% (12.3 m)
3	133 st.	0.4% (0.5 m)
4	2185 st.	5.1% (6.6 m)
5	313 st.	0.6% (0.8 m)
6	928 st.	1.9% (2.5 m)
7	1982 st.	5.5% (7.1 m)
8	1605 st.	4.9% (6.4 m)
9	978 st.	2.4% (3.1 m)
10	101 st.	0.4% (0.5 m)
11	441 st.	1.7% (2.2 m)
12	492 st.	0.9% (1.2 m)
13	700 st.	1.8% (2.3 m)
14	185 st.	0.5% (0.7 m)
15	687 st.	1.8% (2.4 m)
16	823 st.	2.3% (3.0 m)
17	933 st.	3.5% (4.6 m)
18	151 st.	0.4% (0.6 m)
19	588 st.	2.2% (2.8 m)
20	85 st.	0.3% (0.4 m)
21	1375 st.	6.0% (7.7 m)
22	348 st.	1.0% (1.2 m)
23	537 st.	1.5% (1.9 m)
24	372 st.	1.3% (1.7 m)
25	4145 st.	13.5% (17.5 m)
26	672 st.	2.0% (2.6 m)
27	2338 st.	7.9% (10.2 m)
28	769 st.	1.9% (2.5 m)
29	768 st.	2.0% (2.6 m)
30	95 st.	0.6% (0.8 m)
31	2280 st.	6.5% (8.4 m)
32	1286 st.	4.5% (5.9 m)
33	433 st.	1.2% (1.5 m)
34	384 st.	1.0% (1.3 m)

Stitches: 32519
Size: 129.6 x 177.5 mm (5.10 x 6.99 ")
Begin: 64.8, 88.8 mm
End: 19.3, 95.3 mm
Start needle: 1
Colors: 21/34 , Stops: 33
Date: 1/5/2023



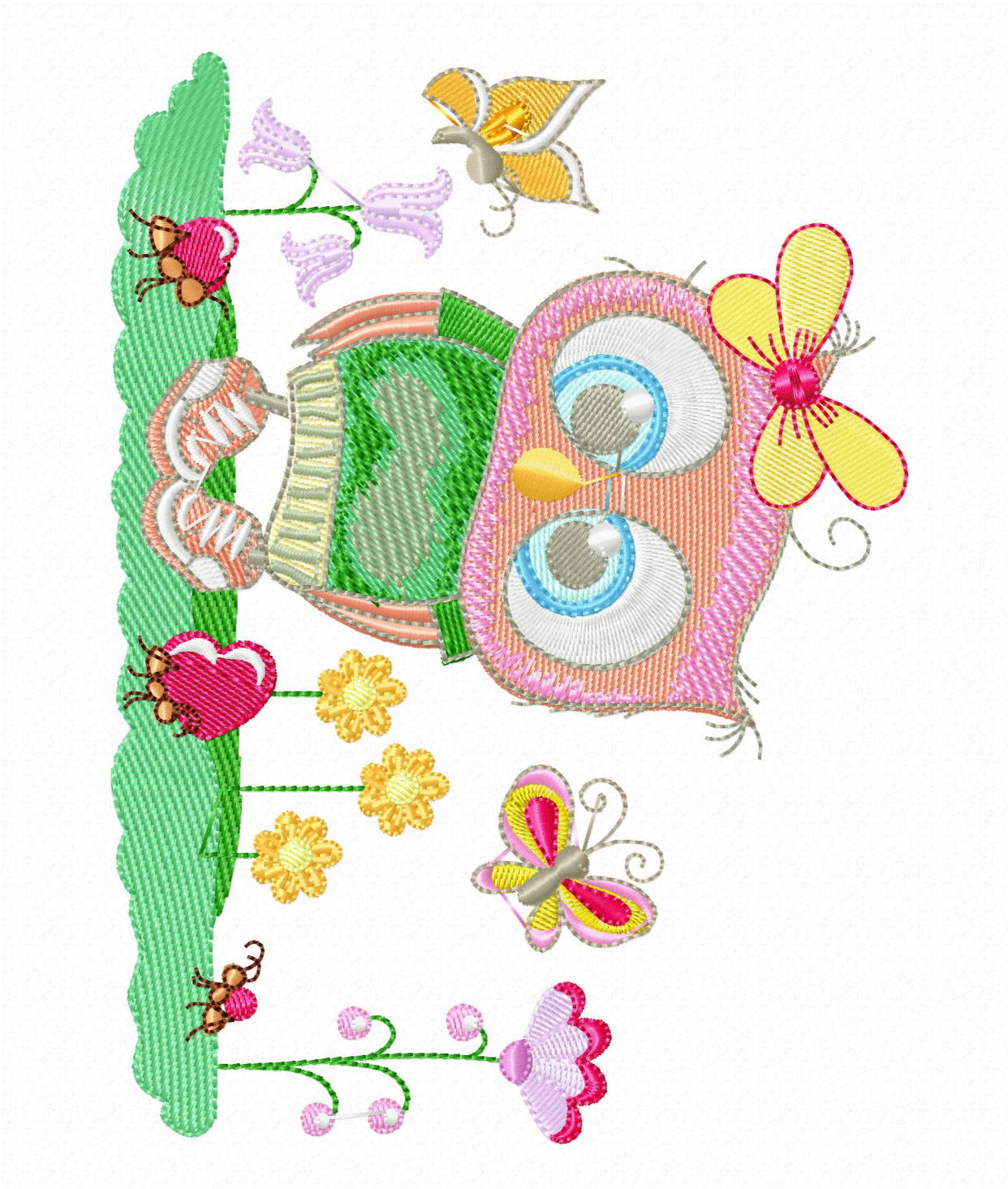
Stitches ratio diagram:



Upper thread 129.6 m
Bobbin 43.2 m

Histogram

(882)	Stop 1
(3408)	Stop 2
(3541)	Stop 3
(5726)	Stop 4
(6039)	Stop 5
(6967)	Stop 6
(8949)	Stop 7
(10554)	Stop 8
(11532)	Stop 9
(11633)	Stop 10
(12074)	Stop 11
(12566)	Stop 12
(13266)	Stop 13
(13451)	Stop 14
(14138)	Stop 15
(14961)	Stop 16
(15894)	Stop 17
(16045)	Stop 18
(16633)	Stop 19
(16718)	Stop 20
(18093)	Stop 21
(18441)	Stop 22
(18978)	Stop 23
(19350)	Stop 24
(23495)	Stop 25
(24167)	Stop 26
(26505)	Stop 27
(27274)	Stop 28
(28042)	Stop 29
(28137)	Stop 30
(30417)	Stop 31
(31703)	Stop 32
(32136)	Stop 33
(32519)	End

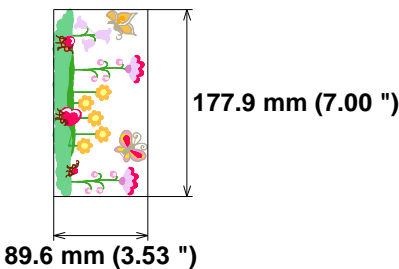


Needle Thread consumption File: 1 (4).jef (Janome)

1	1233 st.	7.8% (5.4 m)
2	2542 st.	18.5% (12.8 m)
3	252 st.	1.5% (1.0 m)
4	3644 st.	16.1% (11.1 m)
5	523 st.	2.0% (1.4 m)
6	930 st.	3.7% (2.5 m)
7	2625 st.	13.8% (9.5 m)
8	210 st.	1.4% (1.0 m)
9	2094 st.	11.5% (7.9 m)
10	1357 st.	6.2% (4.3 m)
11	433 st.	2.9% (2.0 m)
12	492 st.	1.8% (1.2 m)
13	700 st.	3.3% (2.3 m)
14	185 st.	1.0% (0.7 m)
15	789 st.	4.2% (2.9 m)
16	827 st.	4.4% (3.0 m)

Upper thread 69.1 m
Bobbin 23.0 m

Stitches: 18836
Size: 89.6 x 177.9 mm (3.53 x 7.00 ")
Begin: 44.8, 89.0 mm
End: 53.2, 166.2 mm
Start needle: 1
Colors: 14/16 , Stops: 15
Date: 1/5/2023

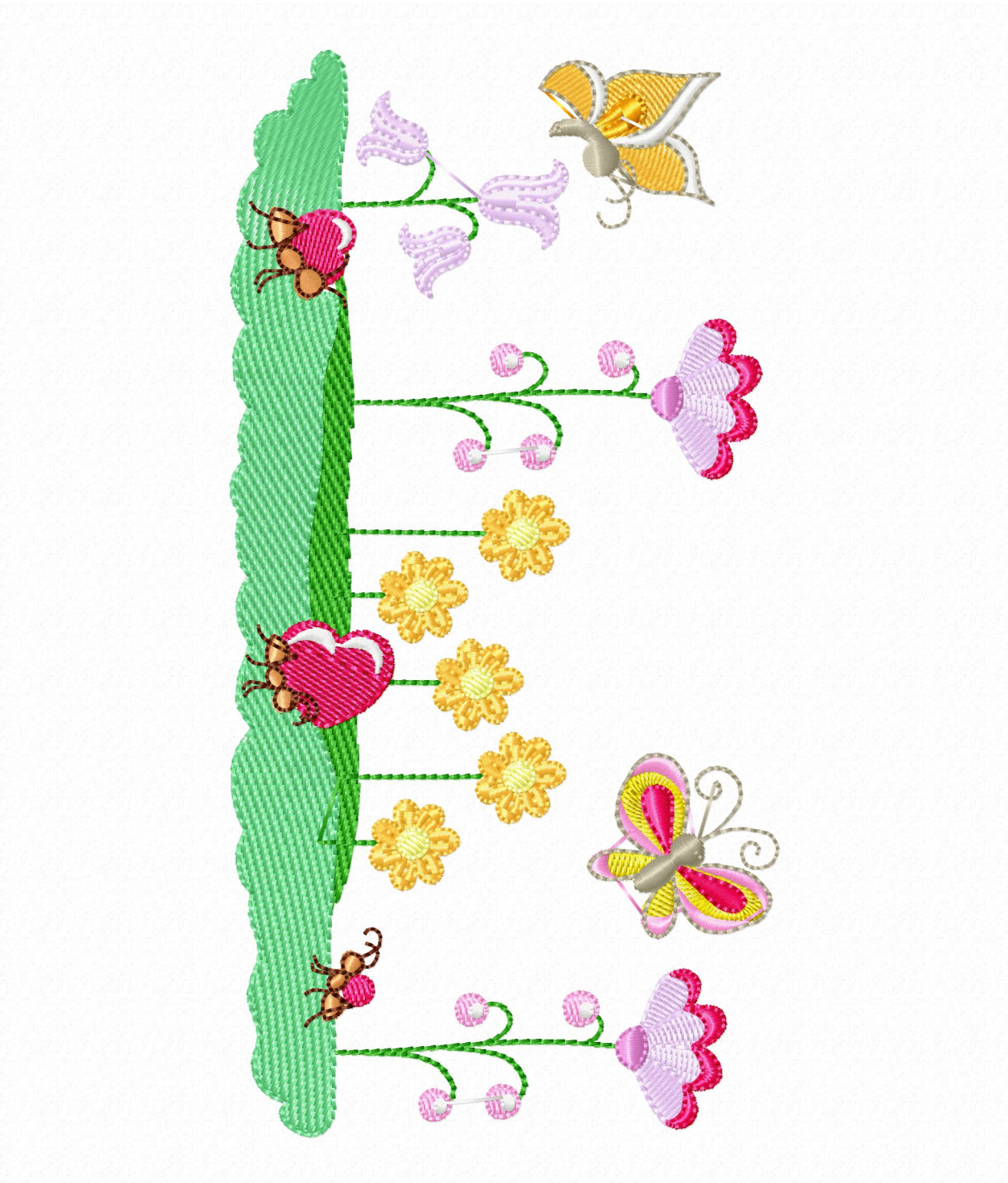


Histogram

Stitches ratio diagram:



(1234) Stop 1
(3776) Stop 2
(4028) Stop 3
(7672) Stop 4
(8195) Stop 5
(9125) Stop 6
(11750) Stop 7
(11960) Stop 8
(14054) Stop 9
(15411) Stop 10
(15844) Stop 11
(16336) Stop 12
(17036) Stop 13
(17221) Stop 14
(18010) Stop 15
(18836) End



Needle Thread consumption File: 1 (5).jef (Janome)

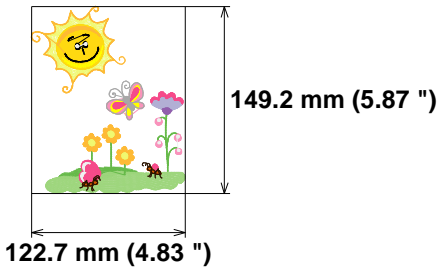
1	604 st.	4.9% (2.6 m)
2	1590 st.	14.7% (8.0 m)
3	133 st.	0.9% (0.5 m)
4	2185 st.	12.3% (6.6 m)
5	1268 st.	7.4% (4.0 m)
6	1691 st.	16.7% (9.1 m)
7	427 st.	2.5% (1.3 m)
8	1055 st.	6.7% (3.6 m)
9	1067 st.	5.3% (2.9 m)
10	635 st.	4.1% (2.2 m)
11	1332 st.	9.5% (5.1 m)
12	972 st.	5.6% (3.0 m)
13	104 st.	0.9% (0.5 m)
14	279 st.	2.3% (1.2 m)
15	323 st.	1.2% (0.7 m)
16	320 st.	2.4% (1.3 m)
17	427 st.	2.7% (1.4 m)

Upper thread 54.1 m
Bobbin 18.0 m

Stitches: 14412
Size: 122.7 x 149.2 mm (4.83 x 5.87 ")
Begin: 61.3, 74.6 mm
End: 77.4, 77.1 mm
Start needle: 1
Colors: 15/17 , Stops: 16
Date: 1/5/2023



www.zoomembroidery.com

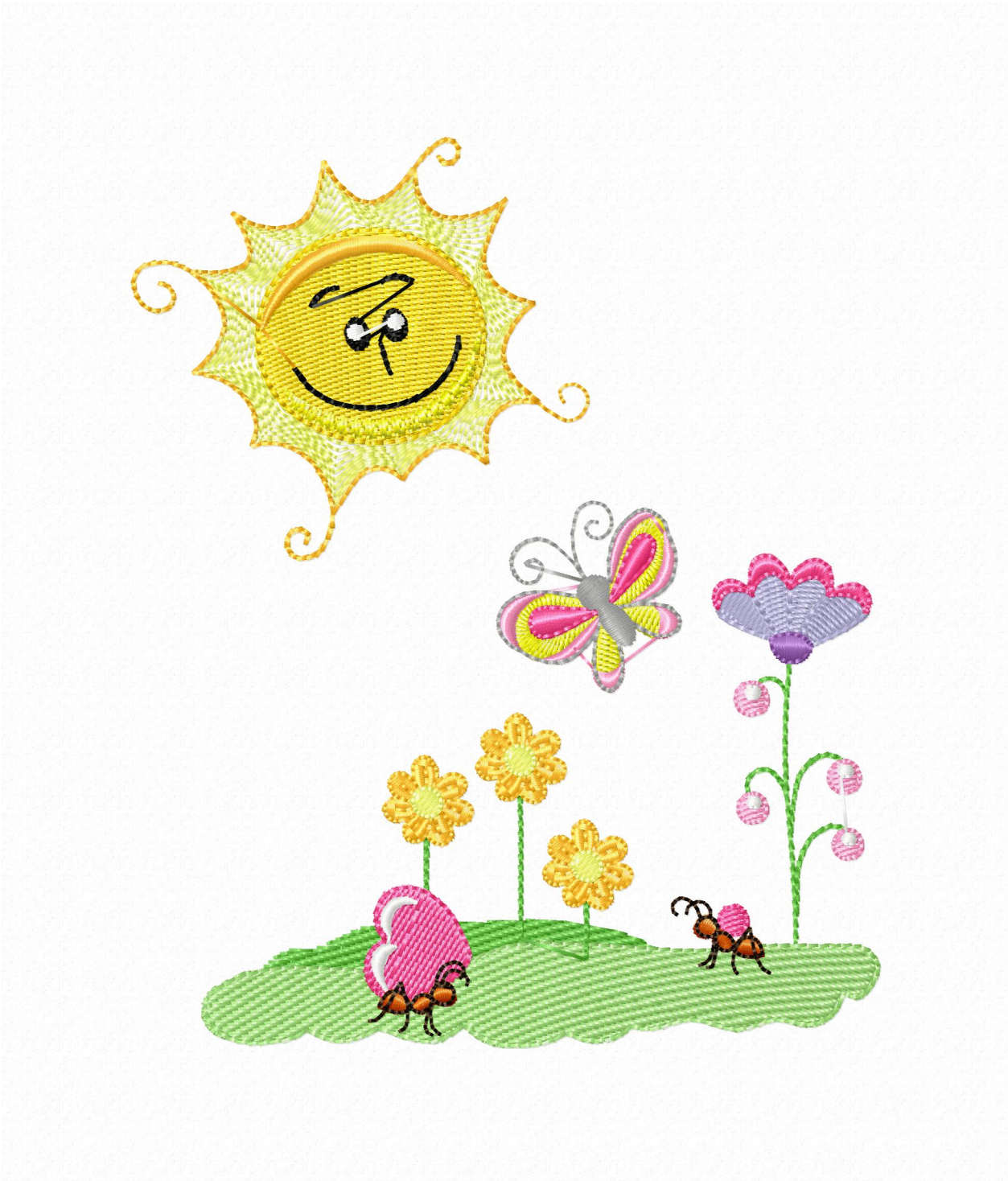


Histogram

Stitches ratio diagram:



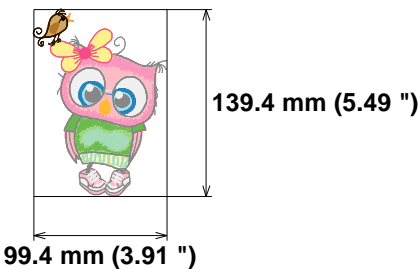
- (605) Stop 1
- (2195) Stop 2
- (2328) Stop 3
- (4513) Stop 4
- (5781) Stop 5
- (7472) Stop 6
- (7899) Stop 7
- (8954) Stop 8
- (10021) Stop 9
- (10656) Stop 10
- (11988) Stop 11
- (12960) Stop 12
- (13064) Stop 13
- (13343) Stop 14
- (13666) Stop 15
- (13986) Stop 16
- (14412) End



Needle Thread consumption File: 1 (6).jef (Janome)

1	931 st.	5.8% (4.5 m)
2	151 st.	0.7% (0.6 m)
3	588 st.	3.6% (2.8 m)
4	85 st.	0.5% (0.4 m)
5	1375 st.	9.9% (7.7 m)
6	348 st.	1.6% (1.2 m)
7	539 st.	2.5% (1.9 m)
8	372 st.	2.1% (1.7 m)
9	4145 st.	22.5% (17.5 m)
10	670 st.	3.3% (2.6 m)
11	2338 st.	13.1% (10.2 m)
12	769 st.	3.2% (2.5 m)
13	768 st.	3.3% (2.6 m)
14	95 st.	1.1% (0.8 m)
15	2280 st.	10.8% (8.4 m)
16	1286 st.	7.6% (5.9 m)
17	431 st.	2.0% (1.5 m)
18	383 st.	1.7% (1.3 m)
19	78 st.	0.5% (0.4 m)
20	484 st.	2.1% (1.7 m)
21	83 st.	0.6% (0.5 m)
22	29 st.	0.1% (0.1 m)
23	436 st.	1.3% (1.0 m)

Stitches: 18664
Size: 99.4 x 139.4 mm (3.91 x 5.49 ")
Begin: 49.7, 69.7 mm
End: 6.8, 118.2 mm
Start needle: 1
Colors: 18/23 , Stops: 22
Date: 1/5/2023



Upper thread 77.9 m
Bobbin 26.0 m

Stitches ratio diagram:



Histogram

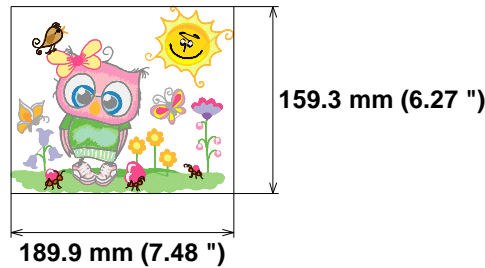
(932) Stop 1
(1083) Stop 2
(1671) Stop 3
(1756) Stop 4
(3131) Stop 5
(3479) Stop 6
(4018) Stop 7
(4390) Stop 8
(8535) Stop 9
(9205) Stop 10
(11543) Stop 11
(12312) Stop 12
(13080) Stop 13
(13175) Stop 14
(15455) Stop 15
(16741) Stop 16
(17172) Stop 17
(17555) Stop 18
(17633) Stop 19
(18117) Stop 20
(18200) Stop 21
(18229) Stop 22
(18664) End



Needle Thread consumption File: 1 (7).jef (Janome)

1	882 st.	2.5% (3.7 m)
2	2523 st.	8.2% (12.5 m)
3	133 st.	0.3% (0.5 m)
4	2185 st.	4.4% (6.6 m)
5	1274 st.	2.7% (4.0 m)
6	1701 st.	6.0% (9.1 m)
7	428 st.	0.9% (1.3 m)
8	1055 st.	2.4% (3.6 m)
9	1069 st.	1.9% (2.9 m)
10	1982 st.	4.7% (7.1 m)
11	1605 st.	4.2% (6.4 m)
12	978 st.	2.1% (3.1 m)
13	101 st.	0.3% (0.5 m)
14	441 st.	1.4% (2.2 m)
15	492 st.	0.8% (1.2 m)
16	700 st.	1.5% (2.3 m)
17	185 st.	0.4% (0.7 m)
18	761 st.	2.0% (3.0 m)
19	823 st.	1.9% (3.0 m)
20	933 st.	3.0% (4.6 m)
21	151 st.	0.4% (0.6 m)
22	588 st.	1.9% (2.8 m)
23	85 st.	0.2% (0.4 m)
24	1375 st.	5.1% (7.7 m)
25	348 st.	0.8% (1.2 m)
26	537 st.	1.3% (1.9 m)
27	372 st.	1.1% (1.7 m)
28	4145 st.	11.6% (17.5 m)
29	672 st.	1.7% (2.6 m)
30	2338 st.	6.7% (10.2 m)
31	769 st.	1.7% (2.5 m)
32	768 st.	1.7% (2.6 m)
33	95 st.	0.6% (0.8 m)
34	2280 st.	5.5% (8.4 m)
35	1286 st.	3.9% (5.9 m)
36	433 st.	1.0% (1.5 m)
(continued)		
Upper thread		151.7 m
Bobbin		50.6 m

Stitches: 37988
Size: 189.9 x 159.3 mm (7.48 x 6.27 ")
Begin: 94.9, 79.7 mm
End: 25.3, 124.3 mm
Start needle: 1
Colors: 25/42 , Stops: 41
Date: 1/5/2023

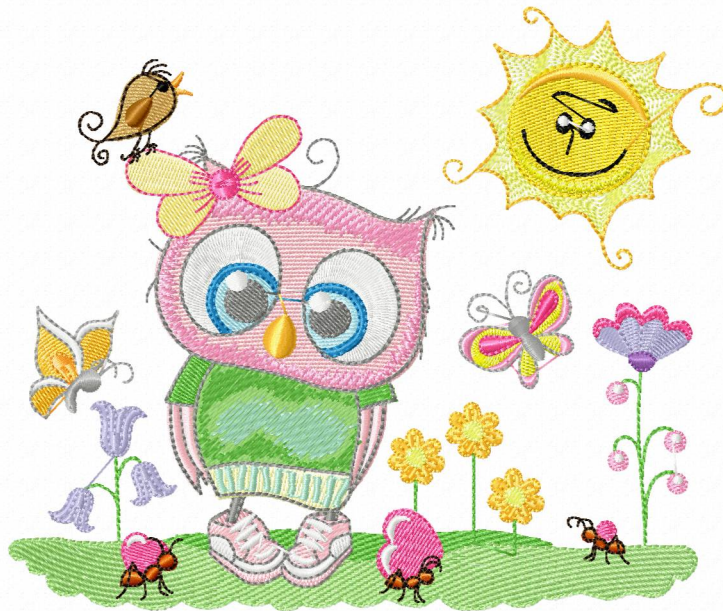


Stitches ratio diagram:



Histogram

(883)	Stop 1
(3406)	Stop 2
(3539)	Stop 3
(5724)	Stop 4
(6998)	Stop 5
(8699)	Stop 6
(9127)	Stop 7
(10182)	Stop 8
(11251)	Stop 9
(13233)	Stop 10
(14838)	Stop 11
(15816)	Stop 12
(15917)	Stop 13
(16358)	Stop 14
(16850)	Stop 15
(17550)	Stop 16
(17735)	Stop 17
(18496)	Stop 18
(19319)	Stop 19
(20252)	Stop 20
(20403)	Stop 21
(20991)	Stop 22
(21076)	Stop 23
(22451)	Stop 24
(22799)	Stop 25
(23336)	Stop 26
(23708)	Stop 27
(27853)	Stop 28
(28525)	Stop 29
(30863)	Stop 30
(31632)	Stop 31
(32400)	Stop 32
(32495)	Stop 33
(34775)	Stop 34
(36061)	Stop 35
(36494)	Stop 36
(continued)	



Needle Thread consumption File: 1 (7).jef (Janome)

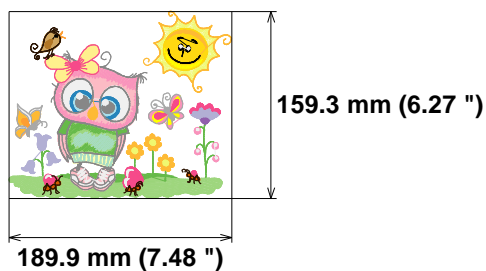
37	383 st.	0.9% (1.3 m)
38	80 st.	0.2% (0.4 m)
39	484 st.	1.1% (1.7 m)
40	83 st.	0.3% (0.5 m)
41	29 st.	0.1% (0.1 m)
42	436 st.	0.7% (1.0 m)

Upper thread	151.7 m
Bobbin	50.6 m

Stitches: 37988
Size: 189.9 x 159.3 mm (7.48 x 6.27 ")
Begin: 94.9, 79.7 mm
End: 25.3, 124.3 mm
Start needle: 1
Colors: 25/42 , Stops: 41
Date: 1/5/2023

zoom
 Embroidery Designs

www.zoomembroidery.com

**Histogram (continued)**

(36877) Stop 37
 (36957) Stop 38
 (37441) Stop 39
 (37524) Stop 40
 (37553) Stop 41
 (37988) End

Stitches ratio diagram:

