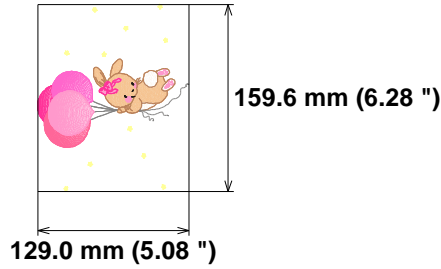


**Needle Thread consumption File: 1 (3).jef (Janome)**

1	1987 st.	19.2% (6.7 m)
2	472 st.	4.2% (1.5 m)
3	275 st.	2.2% (0.8 m)
4	776 st.	4.6% (1.6 m)
5	81 st.	0.5% (0.2 m)
6	250 st.	2.2% (0.8 m)
7	315 st.	3.6% (1.3 m)
8	714 st.	7.5% (2.6 m)
9	676 st.	7.6% (2.6 m)
10	1126 st.	12.9% (4.5 m)
11	2196 st.	23.5% (8.2 m)
12	520 st.	5.7% (2.0 m)
13	534 st.	4.9% (1.7 m)
14	298 st.	1.4% (0.5 m)

**Stitches: 10220**  
**Size: 129.0 x 159.6 mm (5.08 x 6.28 ")**  
**Begin: 64.5, 79.8 mm**  
**End: 53.8, 85.8 mm**  
**Start needle: 1**  
**Colors: 10/14 , Stops: 13**  
**Date: 1/17/2023**

Upper thread 34.8 m  
 Bobbin 11.6 m

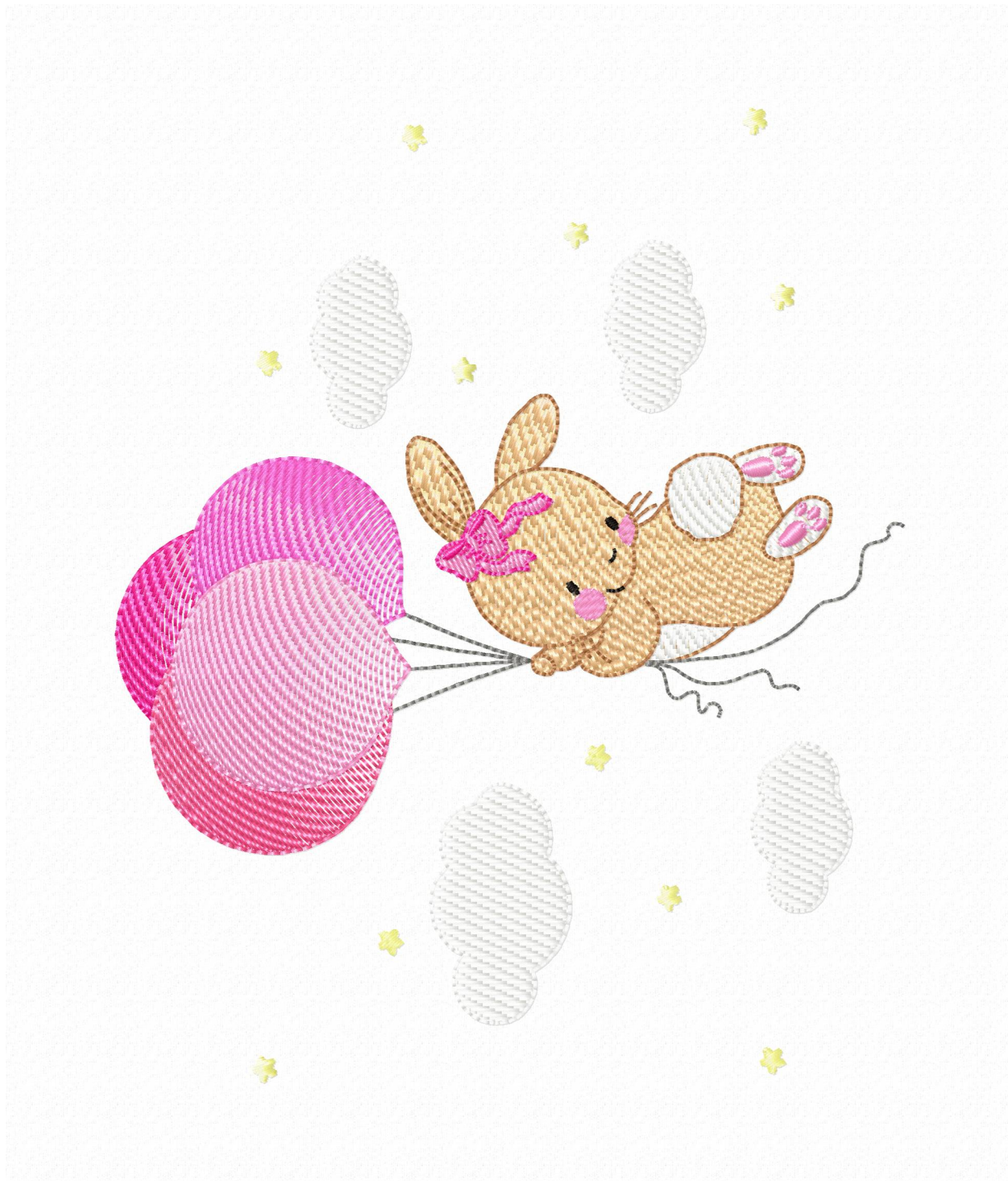


**Histogram**

Stitches ratio diagram:



- (1988) Stop 1
- (2460) Stop 2
- (2735) Stop 3
- (3511) Stop 4
- (3592) Stop 5
- (3842) Stop 6
- (4157) Stop 7
- (4871) Stop 8
- (5547) Stop 9
- (6673) Stop 10
- (8869) Stop 11
- (9389) Stop 12
- (9923) Stop 13
- (10220) End

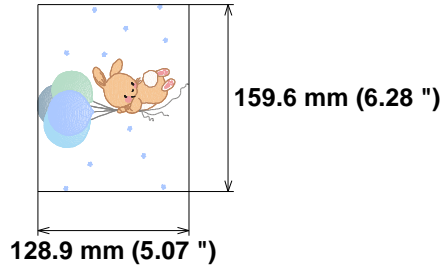


Needle Thread consumption File: 2 (3).jef (Janome)

1	1966 st.	20.4% (6.7 m)
2	457 st.	4.4% (1.5 m)
3	275 st.	2.3% (0.8 m)
4	776 st.	4.9% (1.6 m)
5	81 st.	0.5% (0.2 m)
6	250 st.	2.3% (0.8 m)
7	309 st.	3.9% (1.3 m)
8	713 st.	8.0% (2.6 m)
9	674 st.	8.1% (2.6 m)
10	1125 st.	13.8% (4.5 m)
11	2196 st.	25.1% (8.2 m)
12	531 st.	6.2% (2.0 m)

**Stitches: 9353**  
**Size: 128.9 x 159.6 mm (5.07 x 6.28 ")**  
**Begin: 64.4, 79.8 mm**  
**End: 24.1, 2.9 mm**  
**Start needle: 1**  
**Colors: 10/12 , Stops: 11**  
**Date: 1/17/2023**

Upper thread 32.6 m  
 Bobbin 10.9 m



Histogram

Stitches ratio diagram:



- (1967) Stop 1
- (2424) Stop 2
- (2699) Stop 3
- (3475) Stop 4
- (3556) Stop 5
- (3806) Stop 6
- (4115) Stop 7
- (4828) Stop 8
- (5502) Stop 9
- (6627) Stop 10
- (8823) Stop 11
- (9353) End

