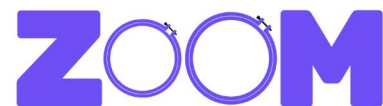


Needle Thread consumption

1	854 st.	6.3% (2.7 m)
2	63 st.	0.6% (0.3 m)
3	247 st.	1.6% (0.7 m)
4	130 st.	0.8% (0.3 m)
5	235 st.	1.4% (0.6 m)
6	415 st.	1.9% (0.8 m)
7	1472 st.	12.2% (5.2 m)
8	295 st.	2.5% (1.1 m)
9	538 st.	4.7% (2.0 m)
10	1169 st.	7.8% (3.4 m)
11	3502 st.	29.6% (12.7 m)
12	132 st.	1.3% (0.5 m)
13	984 st.	9.6% (4.1 m)
14	750 st.	4.6% (2.0 m)
15	239 st.	1.6% (0.7 m)
16	563 st.	3.3% (1.4 m)
17	197 st.	1.7% (0.7 m)
18	913 st.	7.4% (3.2 m)
19	99 st.	0.5% (0.2 m)
20	62 st.	0.4% (0.2 m)

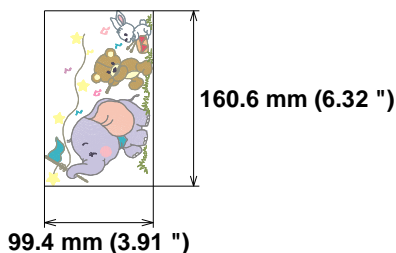
Upper thread 42.8 m
Bobbin 14.3 m

File: 1 (3).jef (Janome)
Stitches: 12859
Size: 99.4 x 160.6 mm (3.91 x 6.32 ")
Begin: 49.7, 80.3 mm
End: 19.4, 103.6 mm
Start needle: 1
Colors: 17/20 , Stops: 19
Date: 2/3/2023



Embroidery Designs

www.zoomembroidery.com

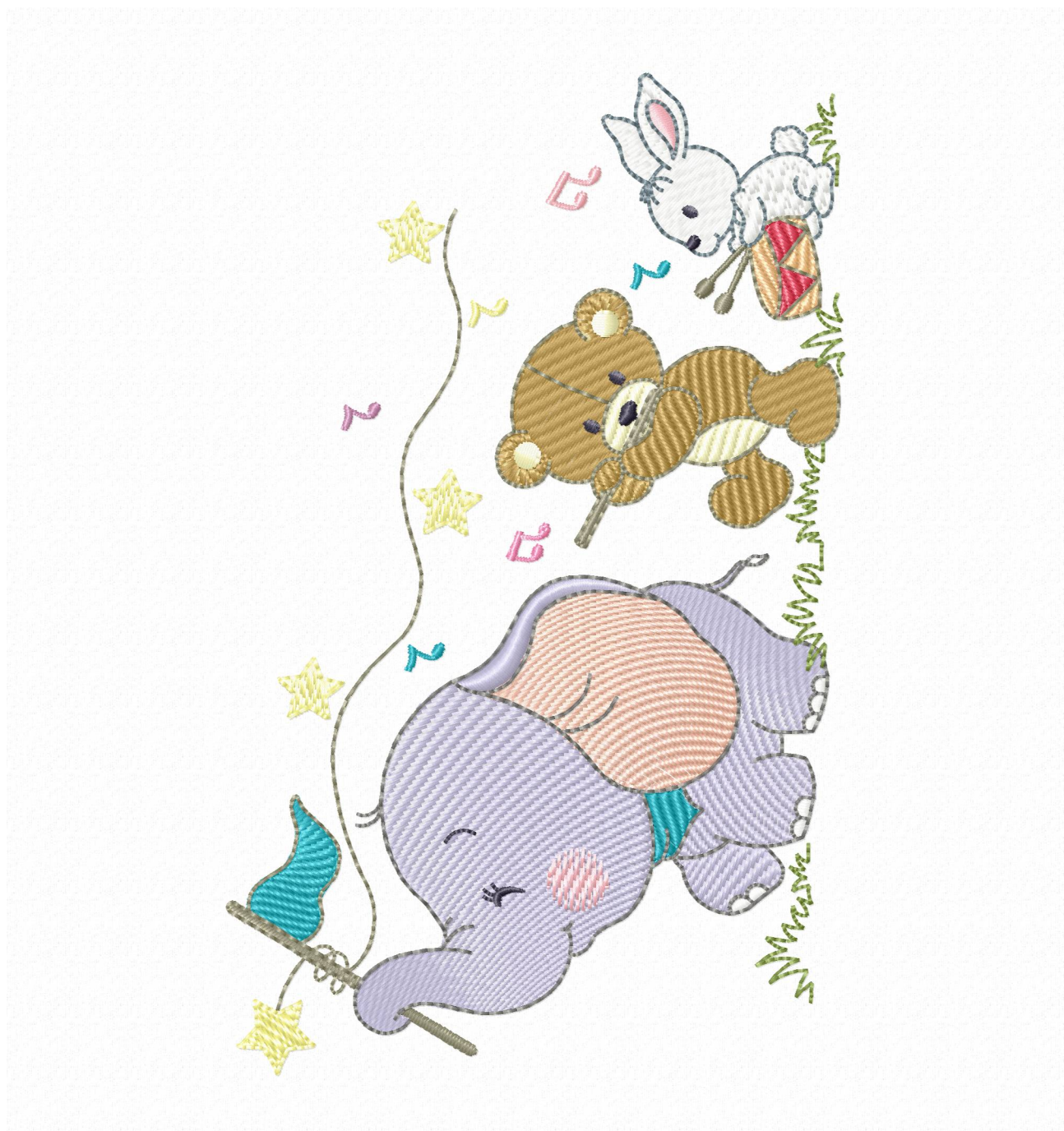


Stitches ratio diagram:



Histogram

- (855) Stop 1
- (918) Stop 2
- (1165) Stop 3
- (1295) Stop 4
- (1530) Stop 5
- (1945) Stop 6
- (3417) Stop 7
- (3712) Stop 8
- (4250) Stop 9
- (5419) Stop 10
- (8921) Stop 11
- (9053) Stop 12
- (10037) Stop 13
- (10787) Stop 14
- (11026) Stop 15
- (11589) Stop 16
- (11786) Stop 17
- (12699) Stop 18
- (12798) Stop 19
- (12859) End

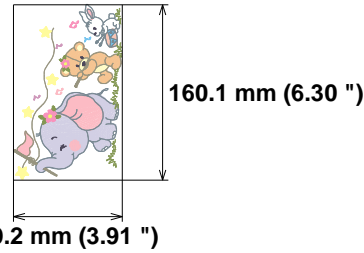


File: 2 (3).jef (Janome)
Stitches: 13381
Size: 99.2 x 160.1 mm (3.91 x 6.30 ")
Begin: 49.6, 80.1 mm
End: 48.2, 106.5 mm
Start needle: 1
Colors: 15/15 , Stops: 14
Date: 2/3/2023

Needle Thread consumption

Needle	Thread consumption
1	3555 st. 28.2% (12.9 m)
2	983 st. 7.1% (3.3 m)
3	1440 st. 13.0% (5.9 m)
4	247 st. 1.5% (0.7 m)
5	188 st. 1.1% (0.5 m)
6	1420 st. 8.3% (3.8 m)
7	1461 st. 11.3% (5.2 m)
8	295 st. 2.3% (1.1 m)
9	1161 st. 7.3% (3.4 m)
10	239 st. 1.6% (0.7 m)
11	848 st. 6.7% (3.1 m)
12	985 st. 5.9% (2.7 m)
13	126 st. 1.0% (0.5 m)
14	369 st. 3.9% (1.8 m)
15	64 st. 0.8% (0.4 m)

Upper thread 45.9 m
 Bobbin 15.3 m



Histogram

- (3556) Stop 1
- (4539) Stop 2
- (5979) Stop 3
- (6226) Stop 4
- (6414) Stop 5
- (7834) Stop 6
- (9295) Stop 7
- (9590) Stop 8
- (10751) Stop 9
- (10990) Stop 10
- (11838) Stop 11
- (12823) Stop 12
- (12949) Stop 13
- (13318) Stop 14
- (13381) End

Stitches ratio diagram:

