

Needle Thread consumption

1	90 st.	7.2% (0.3 m)
2	272 st.	21.0% (0.8 m)
3	678 st.	71.8% (2.6 m)

Upper thread 3.6 m
Bobbin 1.2 m

File: A maior.jef (Janome)

Stitches: 1040

Size: 26.0 x 30.4 mm (1.02 x 1.20 ")

Begin: 13.0, 15.2 mm

End: 13.2, 18.8 mm

Start needle: 1

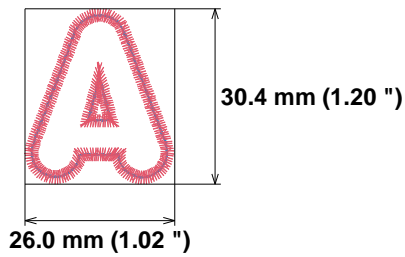
Colors: 3/3 , Stops: 2

Date: 5/8/2023

ZOOM

Embroidery Designs

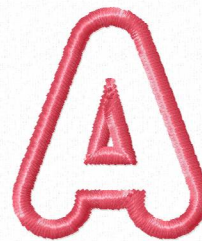
www.zoomembroidery.com



Histogram

(91) Stop 1
(363) Stop 2
(1040) End

Stitches ratio diagram:



Needle Thread consumption

1	113 st.	7.5% (0.3 m)
2	298 st.	21.5% (0.8 m)
3	716 st.	71.1% (2.8 m)

Upper thread 3.9 m
Bobbin 1.3 m

File: B maior.jef (Janome)

Stitches: 1127

Size: 23.0 x 30.4 mm (0.91 x 1.20 ")

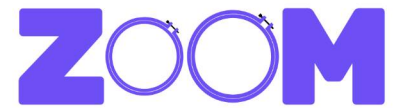
Begin: 11.5, 15.2 mm

End: 11.1, 13.6 mm

Start needle: 1

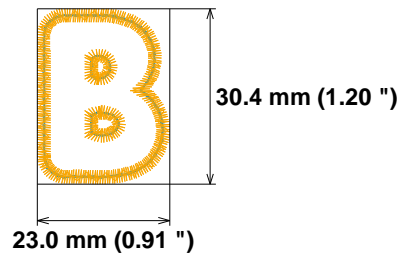
Colors: 3/3 , Stops: 2

Date: 5/8/2023



Embroidery Designs

www.zoomembroidery.com



Histogram

- (114) Stop 1
- (412) Stop 2
- (1127) End

Stitches ratio diagram:



Needle Thread consumption

1	70 st.	5.9% (0.2 m)
2	201 st.	21.4% (0.6 m)
3	518 st.	72.7% (2.0 m)

Upper thread 2.7 m
Bobbin 0.9 m

File: C maior.jef (Janome)

Stitches: 789

Size: 18.4 x 30.4 mm (0.72 x 1.20 ")

Begin: 9.2, 15.2 mm

End: 10.6, 18.3 mm

Start needle: 1

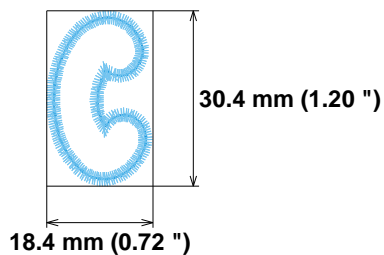
Colors: 3/3 , Stops: 2

Date: 5/8/2023

ZOOM

Embroidery Designs

www.zoomembroidery.com



Histogram

Stitches ratio diagram:



- (71) Stop 1
- (272) Stop 2
- (789) End



Needle Thread consumption

1	87 st.	6.7%	(0.2 m)
2	259 st.	21.8%	(0.8 m)
3	691 st.	71.5%	(2.7 m)

Upper thread	3.7 m
Bobbin	1.2 m

File: D maior.jef (Janome)

Stitches: 1037

Size: 23.8 x 30.4 mm (0.94 x 1.20 ")

Begin: 11.9, 15.2 mm

End: 9.1, 21.6 mm

Start needle: 1

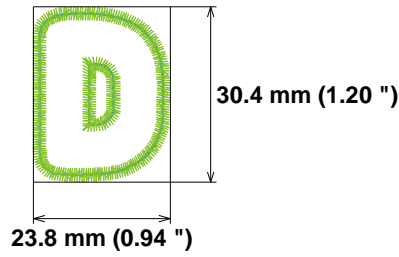
Colors: 3/3 , Stops: 2

Date: 5/8/2023

ZOOM

Embroidery Designs

www.zoomembroidery.com



Histogram

- (88) Stop 1
- (347) Stop 2
- (1037) End

Stitches ratio diagram:

