

**Needle Thread consumption**

1	110 st.	2.9% (0.3 m)
2	162 st.	4.3% (0.5 m)
3	1595 st.	92.9% (10.9 m)

Upper thread 11.7 m  
Bobbin 3.9 m

**File: Lca.pes (Babylock, Bernina, Brother #PES0001)**

**Stitches: 1867**

**Size: 55.8 x 53.8 mm (2.20 x 2.12 ")**

**Begin: 27.9, 26.9 mm**

**End: 29.6, 25.3 mm**

**Start needle: 1**

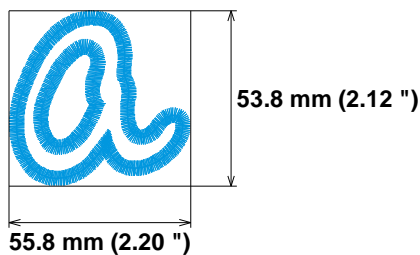
**Colors: 3/3 , Stops: 2**

**Date: 5/8/2023**

**ZOOM**

Embroidery Designs

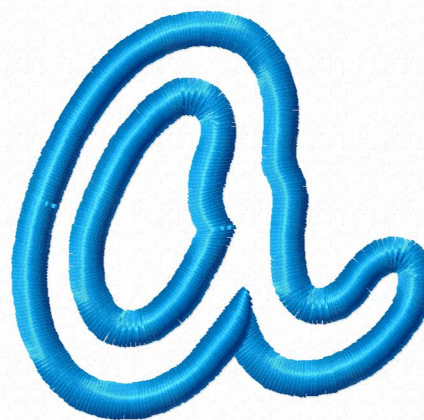
[www.zoomembroidery.com](http://www.zoomembroidery.com)



**Histogram**

(111) Stop 1  
(273) Stop 2  
(1867) End

Stitches ratio diagram:



**Needle Thread consumption**

1	117 st.	3.2% (0.4 m)
2	166 st.	4.0% (0.5 m)
3	1631 st.	92.8% (11.8 m)

Upper thread 12.8 m  
Bobbin 4.3 m

**File: Lcb.pes (Babylock, Bernina, Brother #PES0001)**

**Stitches: 1914**

**Size: 47.9 x 69.3 mm (1.89 x 2.73 ")**

**Begin: 23.9, 34.7 mm**

**End: 20.9, 8.5 mm**

**Start needle: 1**

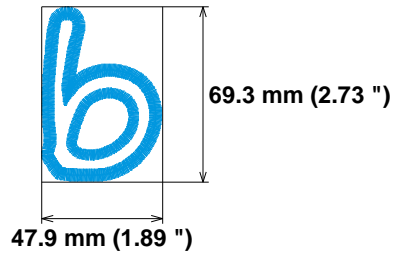
**Colors: 3/3 , Stops: 2**

**Date: 5/8/2023**

**ZOOM**

Embroidery Designs

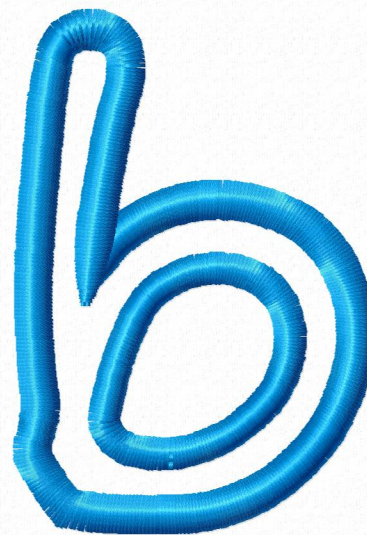
[www.zoomembroidery.com](http://www.zoomembroidery.com)



**Histogram**

- (118) Stop 1
- (284) Stop 2
- (1914) End

Stitches ratio diagram:



**Needle Thread consumption**

1	119 st.	4.6% (0.4 m)
2	119 st.	4.5% (0.3 m)
3	1027 st.	90.9% (7.0 m)

Upper thread 7.7 m  
Bobbin 2.6 m

**File: Lcc.pes (Babylock, Bernina, Brother #PES0001)**

**Stitches: 1265**

**Size: 43.1 x 50.6 mm (1.70 x 1.99 ")**

**Begin: 21.5, 25.3 mm**

**End: 29.9, 28.4 mm**

**Start needle: 1**

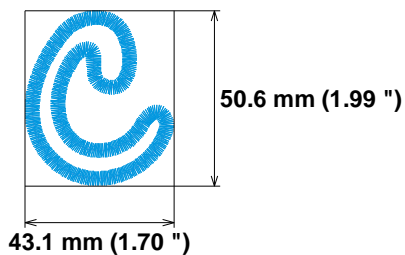
**Colors: 3/3 , Stops: 2**

**Date: 5/8/2023**

**ZOOM**

Embroidery Designs

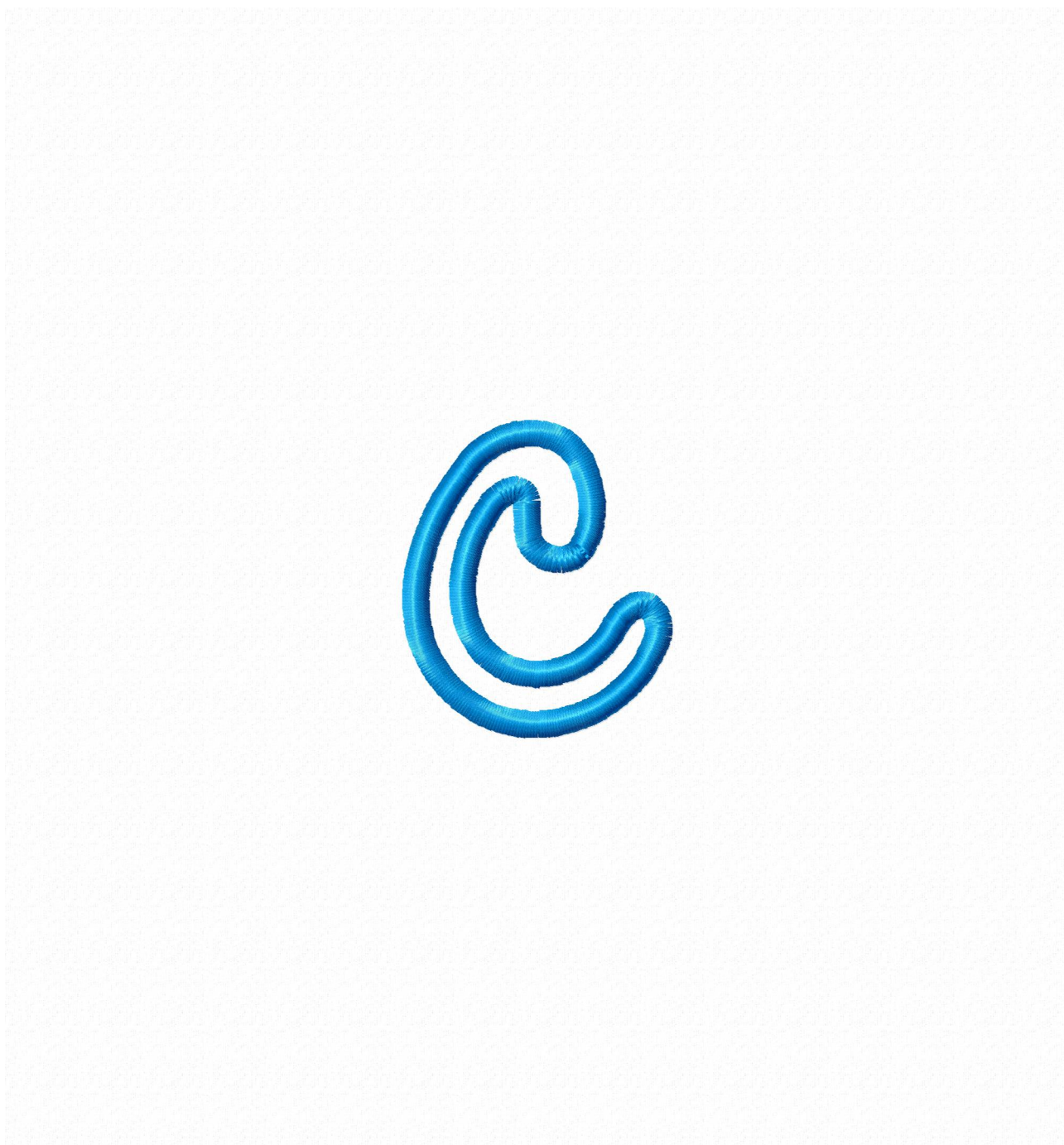
[www.zoomembroidery.com](http://www.zoomembroidery.com)



**Histogram**

Stitches ratio diagram:

- ( 120 ) Stop 1
- ( 239 ) Stop 2
- ( 1265 ) End



**Needle Thread consumption**

1	132 st.	2.7% (0.4 m)
2	183 st.	4.1% (0.7 m)
3	2023 st.	93.2% (15.1 m)

Upper thread 16.2 m  
Bobbin 5.4 m

**File: Lcd.pes (Babylock, Bernina, Brother #PES0001)**

**Stitches: 2338**

**Size: 56.6 x 72.7 mm (2.23 x 2.86 ")**

**Begin: 28.3, 36.4 mm**

**End: 32.6, 24.4 mm**

**Start needle: 1**

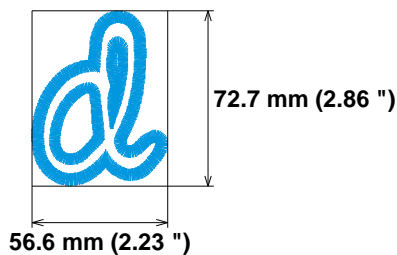
**Colors: 3/3 , Stops: 2**

**Date: 5/8/2023**

**ZOOM**

Embroidery Designs

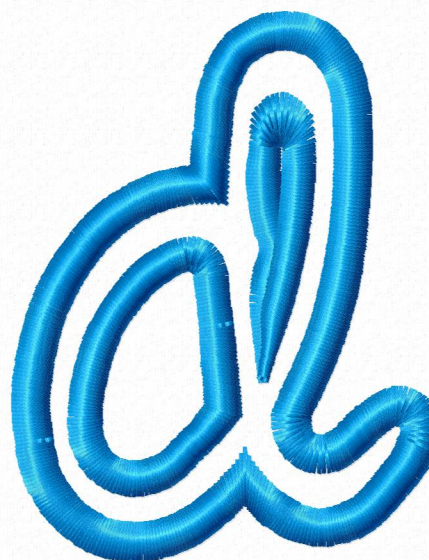
[www.zoomembroidery.com](http://www.zoomembroidery.com)



**Histogram**

- ( 133 ) Stop 1
- ( 316 ) Stop 2
- ( 2338 ) End

Stitches ratio diagram:



**Needle Thread consumption**

1	172 st.	2.5% (0.6 m)
2	294 st.	4.6% (1.1 m)
3	2704 st.	92.9% (21.5 m)

Upper thread 23.1 m  
Bobbin 7.7 m

**File: Uca.pes (Babylock, Bernina, Brother #PES0001)**

**Stitches: 3170**

**Size: 80.3 x 97.4 mm (3.16 x 3.83 ")**

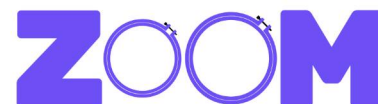
**Begin: 40.1, 48.7 mm**

**End: 51.6, 60.0 mm**

**Start needle: 1**

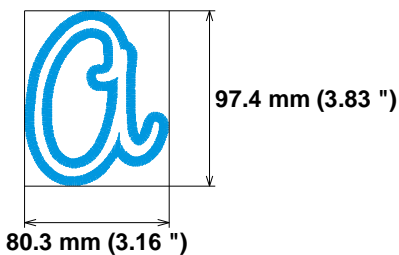
**Colors: 3/3 , Stops: 2**

**Date: 5/8/2023**



Embroidery Designs

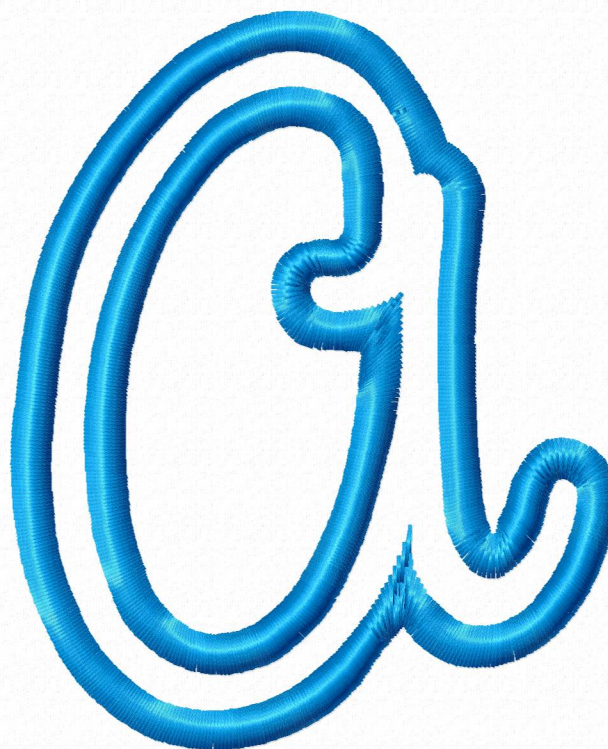
[www.zoomembroidery.com](http://www.zoomembroidery.com)



Stitches ratio diagram:

**Histogram**

- ( 173 ) Stop 1
- ( 467 ) Stop 2
- ( 3170 ) End



**Needle Thread consumption**

1	171 st.	2.3%	(0.6 m)
2	306 st.	4.3%	(1.1 m)
3	3177 st.	93.4%	(23.4 m)

Upper thread 25.0 m  
Bobbin 8.3 m

**File: Ucb.pes (Babylock, Bernina, Brother #PES0001)**

**Stitches: 3654**

**Size: 73.2 x 94.2 mm (2.88 x 3.71 ")**

**Begin: 36.6, 47.1 mm**

**End: 41.7, 47.0 mm**

**Start needle: 1**

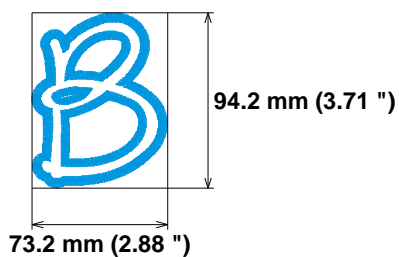
**Colors: 3/3 , Stops: 2**

**Date: 5/8/2023**

**ZOOM**

Embroidery Designs

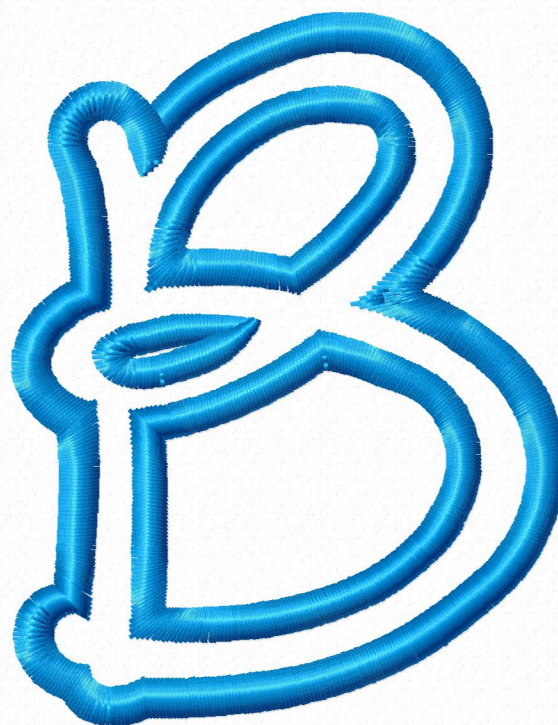
[www.zoomembroidery.com](http://www.zoomembroidery.com)



**Histogram**

( 172 ) Stop 1  
( 478 ) Stop 2  
( 3654 ) End

Stitches ratio diagram:



**Needle Thread consumption**

1	223 st.	4.7% (0.7 m)
2	222 st.	4.5% (0.7 m)
3	1985 st.	90.7% (13.8 m)

Upper thread 15.2 m  
Bobbin 5.1 m

**File: Ucc.pes (Babylock, Bernina, Brother #PES0001)**

**Stitches: 2430**

**Size: 62.8 x 96.3 mm (2.47 x 3.79 ")**

**Begin: 31.4, 48.2 mm**

**End: 42.0, 49.6 mm**

**Start needle: 1**

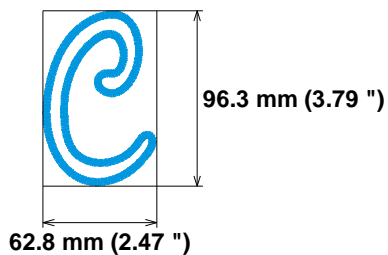
**Colors: 3/3 , Stops: 2**

**Date: 5/8/2023**

**ZOOM**

Embroidery Designs

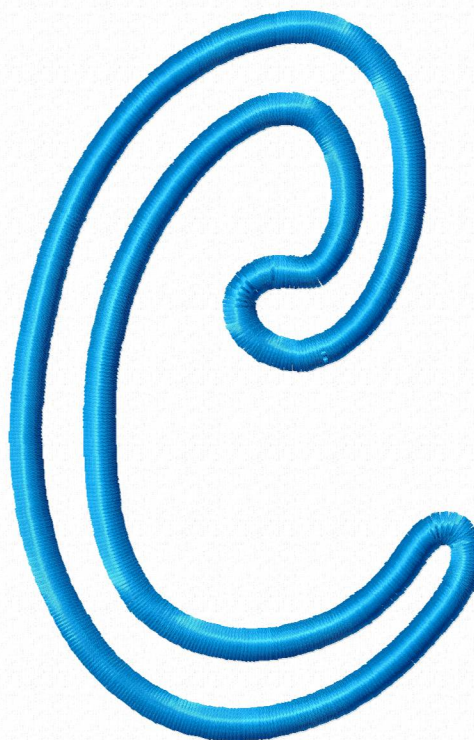
[www.zoomembroidery.com](http://www.zoomembroidery.com)



**Histogram**

- ( 224 ) Stop 1
- ( 446 ) Stop 2
- ( 2430 ) End

Stitches ratio diagram:



**Needle Thread consumption**

1	160 st.	2.8% (0.6 m)
2	263 st.	4.6% (0.9 m)
3	2446 st.	92.6% (18.6 m)

Upper thread 20.1 m  
Bobbin 6.7 m

**File: Ucd.pes (Babylock, Bernina, Brother #PES0001)**

**Stitches: 2869**

**Size: 73.9 x 95.8 mm (2.91 x 3.77 ")**

**Begin: 36.9, 47.9 mm**

**End: 20.9, 19.8 mm**

**Start needle: 1**

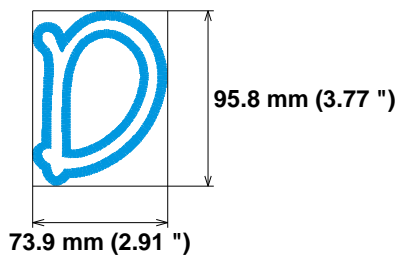
**Colors: 3/3 , Stops: 2**

**Date: 5/8/2023**

**ZOOM**

Embroidery Designs

[www.zoomembroidery.com](http://www.zoomembroidery.com)



**Histogram**

( 161 ) Stop 1  
( 424 ) Stop 2  
( 2869 ) End

Stitches ratio diagram:

