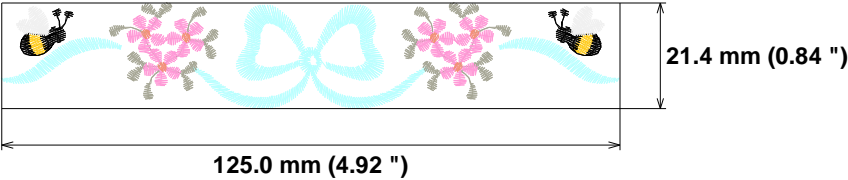


Needle	Thread consumption
1 1270 st.	38.5% (4.3 m)
2 622 st.	14.7% (1.6 m)
3 677 st.	19.0% (2.1 m)
4 111 st.	4.0% (0.4 m)
5 101 st.	5.0% (0.6 m)
6 289 st.	10.2% (1.1 m)
7 198 st.	8.7% (1.0 m)
Upper thread	11.2 m
Bobbin	3.7 m

File: 2 (1).jef (Janome)  
Stitches: 3268  
Size: 125.0 x 21.4 mm (4.92 x 0.84 ")  
Begin: 62.5, 10.7 mm  
End: 116.0, 14.9 mm  
Start needle: 1  
Colors: 7/7 , Stops: 6  
Date: 6/5/2023



Histogram

Stitches ratio diagram:



- ( 1271 ) Stop 1
- ( 1893 ) Stop 2
- ( 2570 ) Stop 3
- ( 2681 ) Stop 4
- ( 2782 ) Stop 5
- ( 3071 ) Stop 6
- ( 3268 ) End

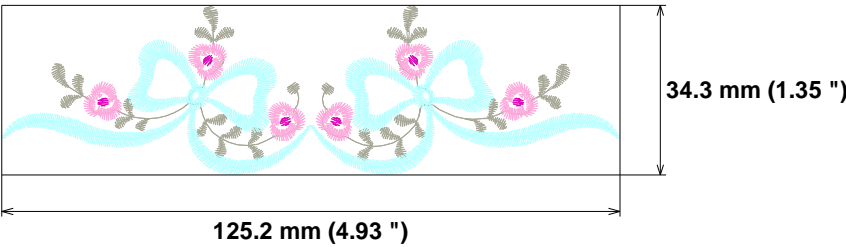


Needle Thread consumption

1	1057 st.	20.8% (2.8 m)
2	110 st.	4.2% (0.6 m)
3	820 st.	19.1% (2.5 m)
4	2247 st.	55.8% (7.5 m)

Upper thread	13.4 m
Bobbin	4.5 m

File: 2 (10).jef (Janome)  
Stitches: 4234  
Size: 125.2 x 34.3 mm (4.93 x 1.35 ")  
Begin: 62.6, 17.1 mm  
End: 87.3, 16.6 mm  
Start needle: 1  
Colors: 4/4 , Stops: 3  
Date: 6/5/2023

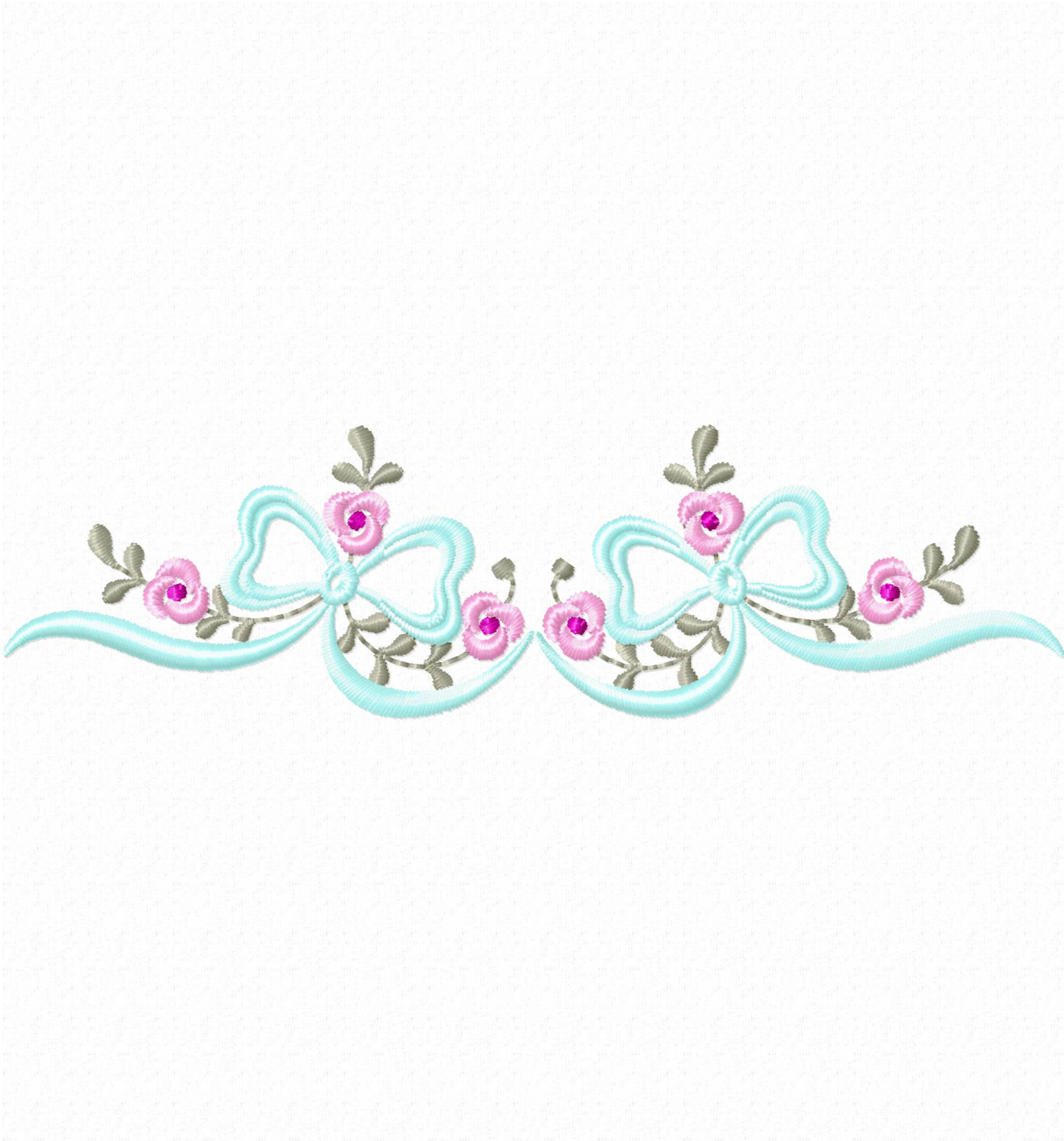


Histogram

Stitches ratio diagram:



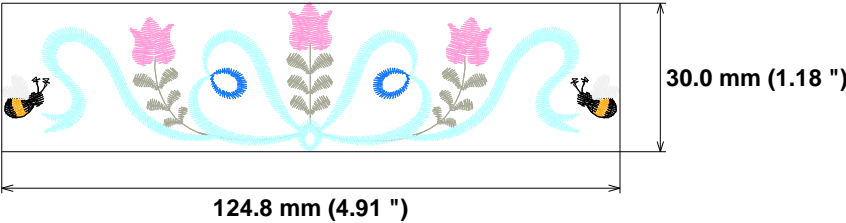
- (1058) Stop 1
- (1168) Stop 2
- (1988) Stop 3
- (4234) End





Needle	Thread consumption
1 605 st.	13.3% (1.7 m)
2 1631 st.	48.3% (6.3 m)
3 497 st.	16.0% (2.1 m)
4 216 st.	4.2% (0.6 m)
5 94 st.	4.1% (0.5 m)
6 255 st.	7.6% (1.0 m)
7 170 st.	6.5% (0.8 m)
Upper thread	13.1 m
Bobbin	4.4 m

File: 2 (2).jef (Janome)  
Stitches: 3468  
Size: 124.8 x 30.0 mm (4.91 x 1.18 ")  
Begin: 62.4, 15.0 mm  
End: 119.8, 10.6 mm  
Start needle: 1  
Colors: 7/7 , Stops: 6  
Date: 6/5/2023



Histogram

Stitches ratio diagram:



- ( 606 ) Stop 1
- ( 2237 ) Stop 2
- ( 2734 ) Stop 3
- ( 2950 ) Stop 4
- ( 3044 ) Stop 5
- ( 3299 ) Stop 6
- ( 3468 ) End

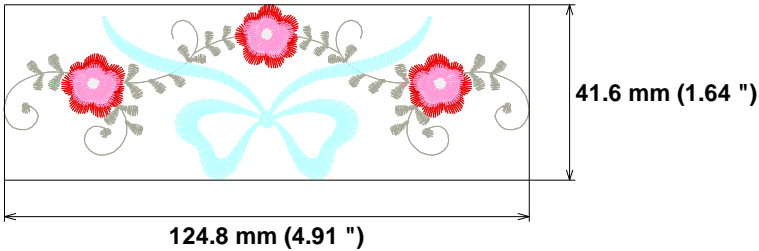


Needle Thread consumption

1	1258 st.	23.3% (3.6 m)
2	702 st.	19.4% (3.0 m)
3	718 st.	20.6% (3.2 m)
4	94 st.	3.6% (0.6 m)
5	1367 st.	33.2% (5.2 m)

Upper thread	15.6 m
Bobbin	5.2 m

File: 2 (3).jef (Janome)  
Stitches: 4139  
Size: 124.8 x 41.6 mm (4.91 x 1.64 ")  
Begin: 62.4, 20.8 mm  
End: 101.6, 38.5 mm  
Start needle: 1  
Colors: 5/5 , Stops: 4  
Date: 6/5/2023

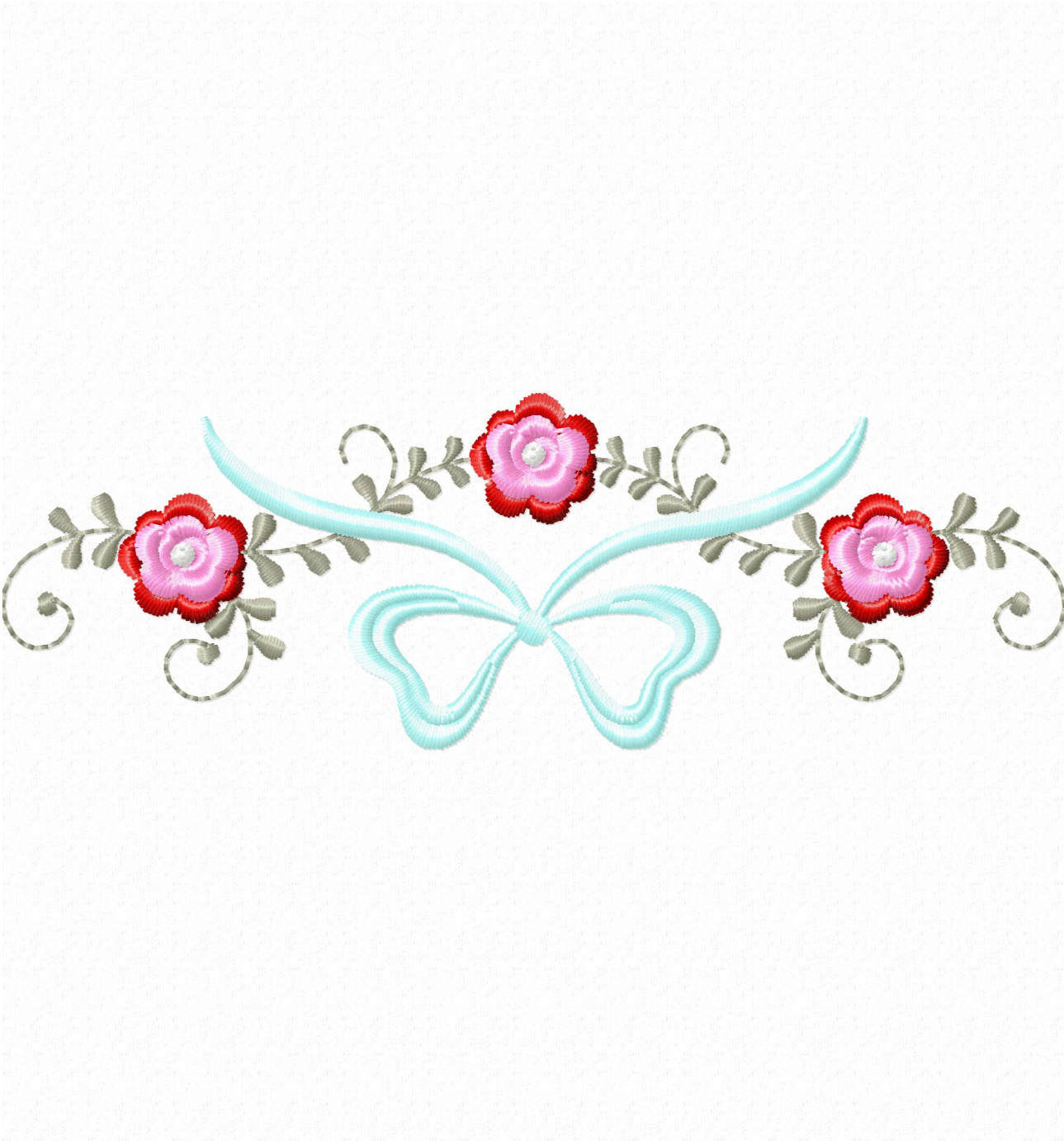


Histogram

Stitches ratio diagram:



- (1259) Stop 1
- (1961) Stop 2
- (2679) Stop 3
- (2773) Stop 4
- (4139) End

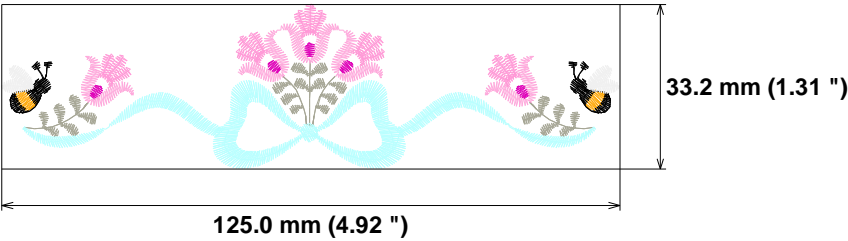




Needle	Thread consumption
1 616 st.	13.6% (1.7 m)
2 93 st.	4.1% (0.5 m)
3 1272 st.	35.5% (4.5 m)
4 480 st.	12.1% (1.5 m)
5 135 st.	5.0% (0.6 m)
6 473 st.	13.9% (1.8 m)
7 282 st.	8.5% (1.1 m)
8 191 st.	7.4% (0.9 m)

Upper thread 12.7 m  
Bobbin 4.2 m

File: 2 (4).jef (Janome)  
Stitches: 3542  
Size: 125.0 x 33.2 mm (4.92 x 1.31 ")  
Begin: 62.5, 16.6 mm  
End: 118.9, 16.1 mm  
Start needle: 1  
Colors: 8/8 , Stops: 7  
Date: 6/5/2023



Histogram

Stitches ratio diagram:



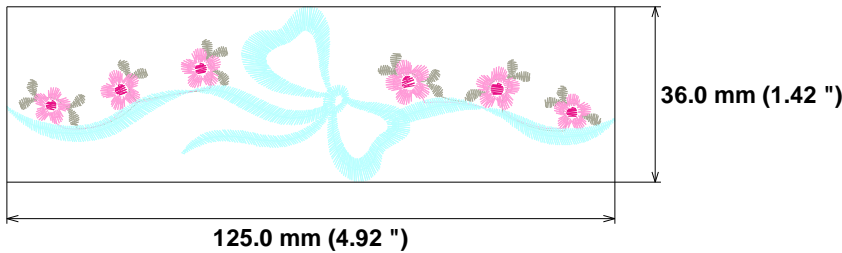
- ( 617 ) Stop 1
- ( 710 ) Stop 2
- ( 1982 ) Stop 3
- ( 2462 ) Stop 4
- ( 2597 ) Stop 5
- ( 3070 ) Stop 6
- ( 3352 ) Stop 7
- ( 3542 ) End



Needle	Thread consumption
1 578 st.	13.4% (1.5 m)
2 135 st.	5.5% (0.6 m)
3 885 st.	24.1% (2.8 m)
4 1658 st.	57.0% (6.6 m)

Upper thread 11.5 m  
Bobbin 3.8 m

File: 2 (5).jef (Janome)  
Stitches: 3256  
Size: 125.0 x 36.0 mm (4.92 x 1.42 ")  
Begin: 62.5, 18.0 mm  
End: 70.3, 17.2 mm  
Start needle: 1  
Colors: 4/4 , Stops: 3  
Date: 6/5/2023

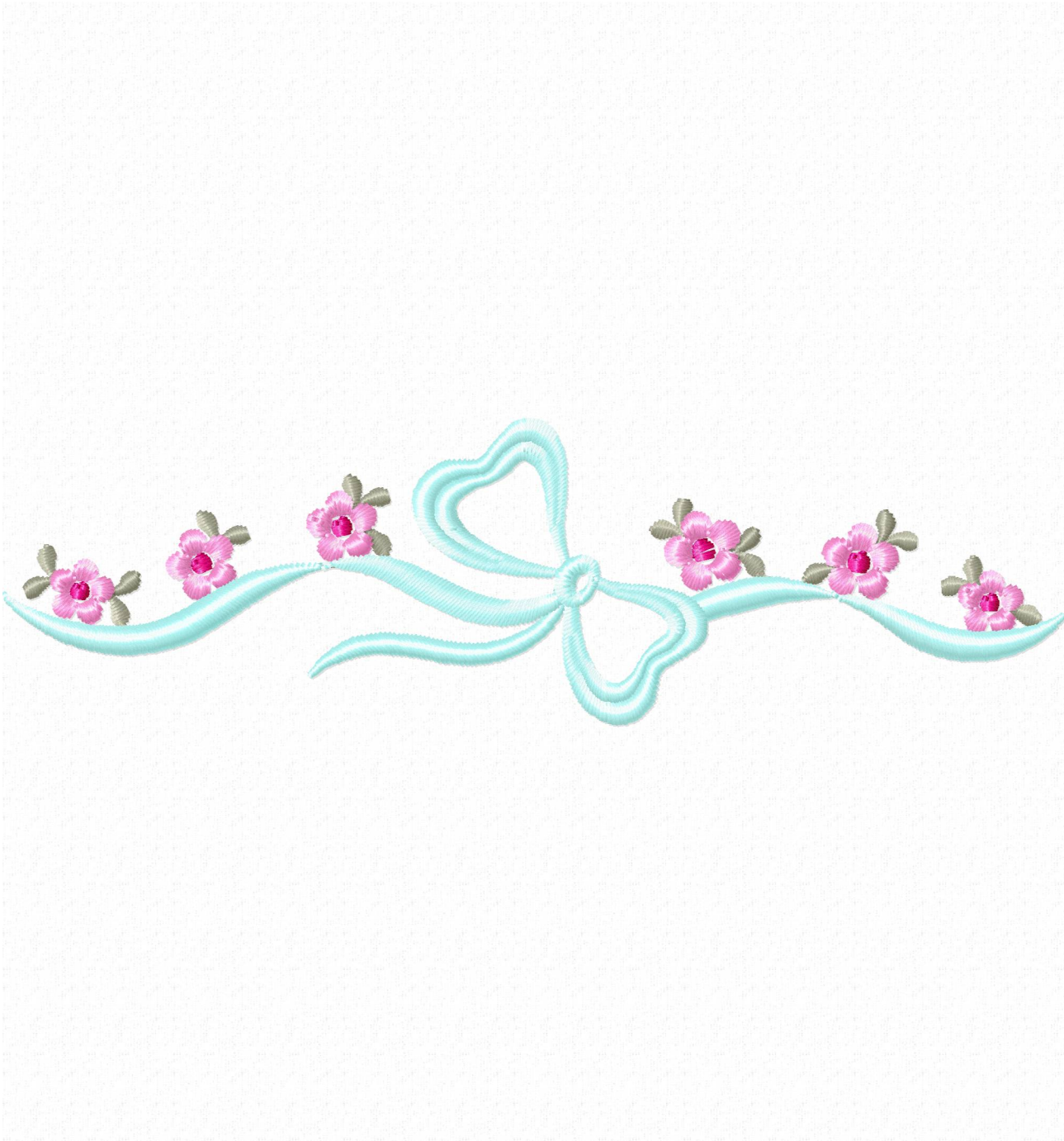


Histogram

Stitches ratio diagram:



- ( 579 ) Stop 1
- ( 714 ) Stop 2
- ( 1599 ) Stop 3
- ( 3256 ) End



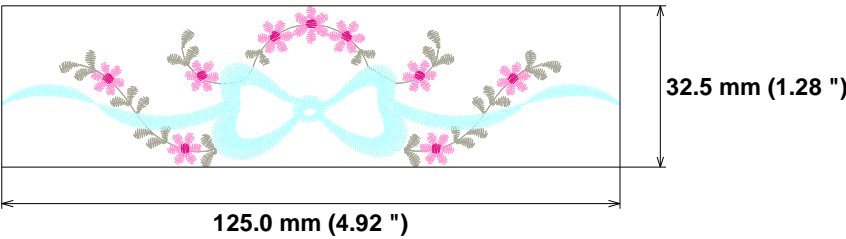


Needle Thread consumption

1	964 st.	22.1% (2.5 m)
2	1118 st.	25.2% (2.9 m)
3	175 st.	7.4% (0.8 m)
4	1377 st.	45.4% (5.2 m)

Upper thread	11.4 m
Bobbin	3.8 m

File: 2 (6).jef (Janome)  
Stitches: 3634  
Size: 125.0 x 32.5 mm (4.92 x 1.28 ")  
Begin: 62.5, 16.2 mm  
End: 64.9, 9.7 mm  
Start needle: 1  
Colors: 4/4 , Stops: 3  
Date: 6/5/2023

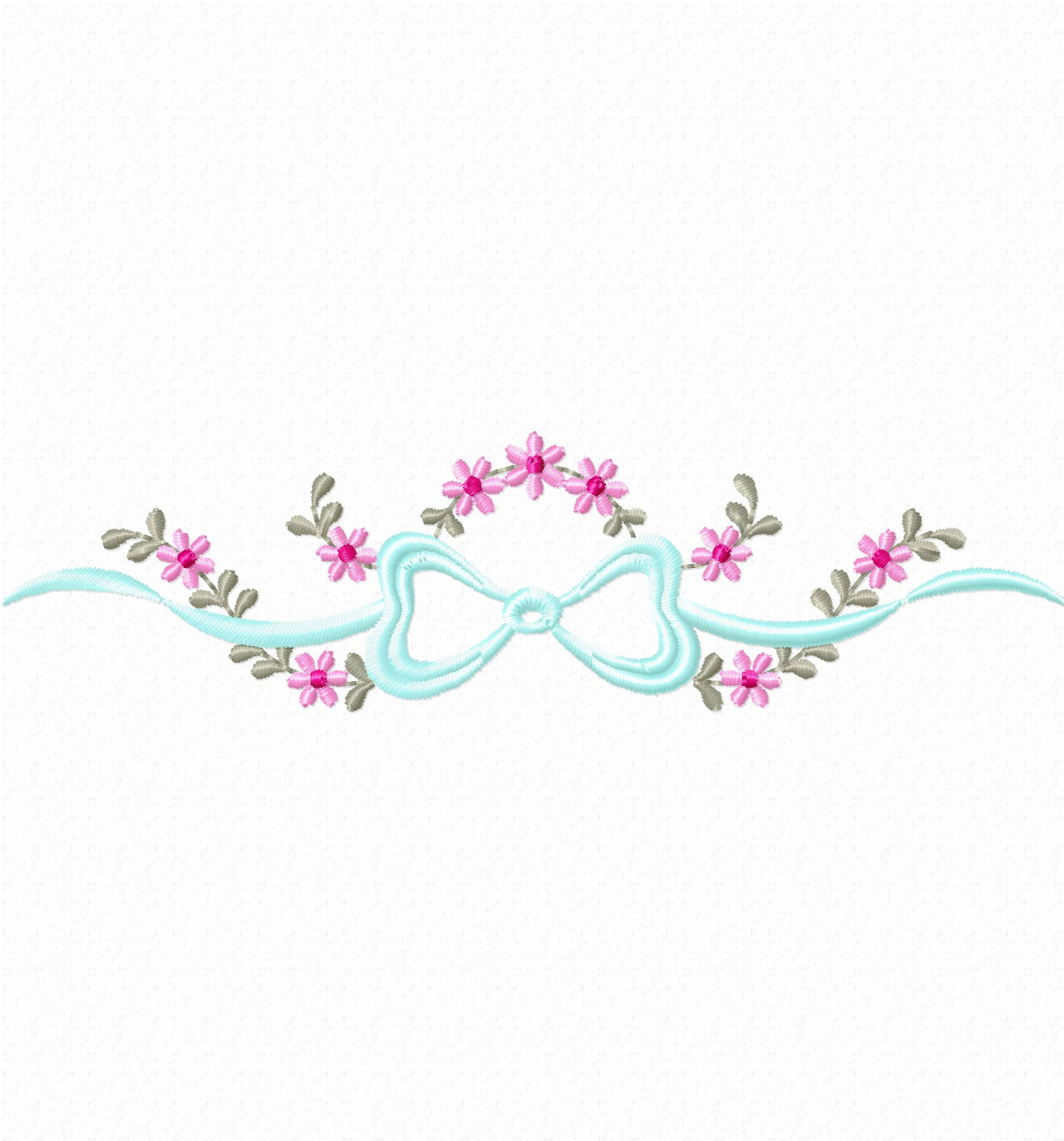


Histogram

Stitches ratio diagram:



- ( 965 ) Stop 1
- ( 2083 ) Stop 2
- ( 2258 ) Stop 3
- ( 3634 ) End

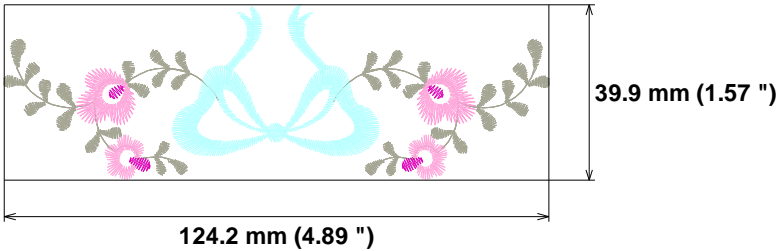


Needle Thread consumption

1	2761 st.	48.1% (8.2 m)
2	115 st.	3.2% (0.5 m)
3	203 st.	5.7% (1.0 m)
4	525 st.	13.9% (2.4 m)
5	1404 st.	29.2% (5.0 m)

Upper thread	17.1 m
Bobbin	5.7 m

File: 2 (7).jef (Janome)  
Stitches: 5008  
Size: 124.2 x 39.9 mm (4.89 x 1.57 ")  
Begin: 62.1, 19.9 mm  
End: 63.1, 12.3 mm  
Start needle: 1  
Colors: 5/5 , Stops: 4  
Date: 6/5/2023



Histogram

Stitches ratio diagram:



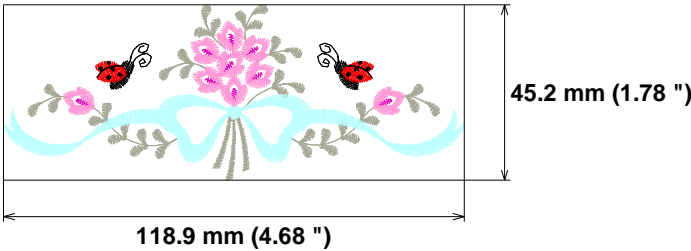
- ( 2762 ) Stop 1
- ( 2877 ) Stop 2
- ( 3080 ) Stop 3
- ( 3605 ) Stop 4
- ( 5008 ) End





Needle	Thread consumption
1 1519 st.	26.2% (4.1 m)
2 1363 st.	33.2% (5.2 m)
3 204 st.	4.1% (0.6 m)
4 967 st.	22.2% (3.5 m)
5 271 st.	5.2% (0.8 m)
6 260 st.	6.1% (1.0 m)
7 169 st.	3.0% (0.5 m)
Upper thread	15.7 m
Bobbin	5.2 m

File: 2 (8).jef (Janome)  
Stitches: 4753  
Size: 118.9 x 45.2 mm (4.68 x 1.78 ")  
Begin: 59.4, 22.6 mm  
End: 94.7, 28.6 mm  
Start needle: 1  
Colors: 6/7 , Stops: 6  
Date: 6/5/2023



Histogram

Stitches ratio diagram:

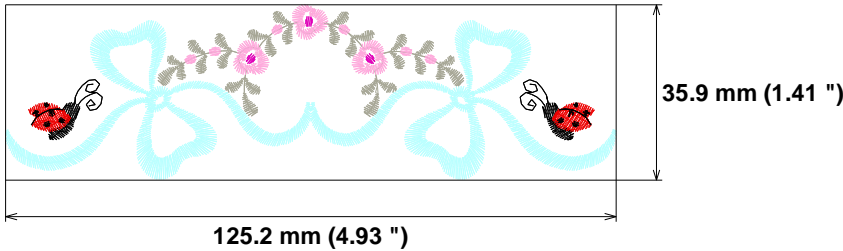


- (1520) Stop 1
- (2883) Stop 2
- (3087) Stop 3
- (4054) Stop 4
- (4325) Stop 5
- (4585) Stop 6
- (4753) End



Needle	Thread consumption
1 280 st.	6.6% (0.9 m)
2 275 st.	7.9% (1.1 m)
3 179 st.	4.4% (0.6 m)
4 2362 st.	54.2% (7.8 m)
5 845 st.	15.3% (2.2 m)
6 60 st.	1.2% (0.2 m)
7 510 st.	10.3% (1.5 m)
Upper thread	14.3 m
Bobbin	4.8 m

File: 2 (9).jef (Janome)  
Stitches: 4511  
Size: 125.2 x 35.9 mm (4.93 x 1.41 ")  
Begin: 62.6, 17.9 mm  
End: 72.5, 26.0 mm  
Start needle: 1  
Colors: 6/7 , Stops: 6  
Date: 6/5/2023



Histogram

Stitches ratio diagram:



- ( 281 ) Stop 1
- ( 556 ) Stop 2
- ( 735 ) Stop 3
- ( 3097 ) Stop 4
- ( 3942 ) Stop 5
- ( 4002 ) Stop 6
- ( 4511 ) End

