

## Needle Thread consumption

1	3193 st.	27.5% (10.2 m)
2	235 st.	1.5% (0.6 m)
3	946 st.	7.4% (2.8 m)
4	83 st.	0.4% (0.2 m)
5	984 st.	8.3% (3.1 m)
6	890 st.	8.2% (3.1 m)
7	815 st.	6.2% (2.3 m)
8	2639 st.	19.5% (7.3 m)
9	1089 st.	10.9% (4.1 m)
10	931 st.	10.0% (3.7 m)

Upper thread	37.2 m
Bobbin	12.4 m

File: 1 (4).jef (Janome)

Stitches: 11805

Size: 132.0 x 148.9 mm (5.20 x 5.86 ")

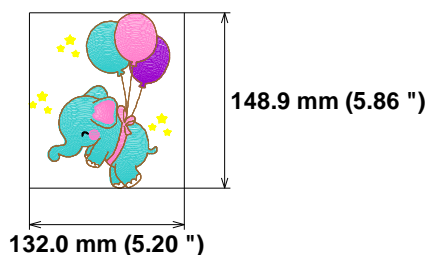
Begin: 66.0, 74.4 mm

End: 117.7, 45.2 mm

Start needle: 1

Colors: 7/10 , Stops: 9

Date: 6/9/2023

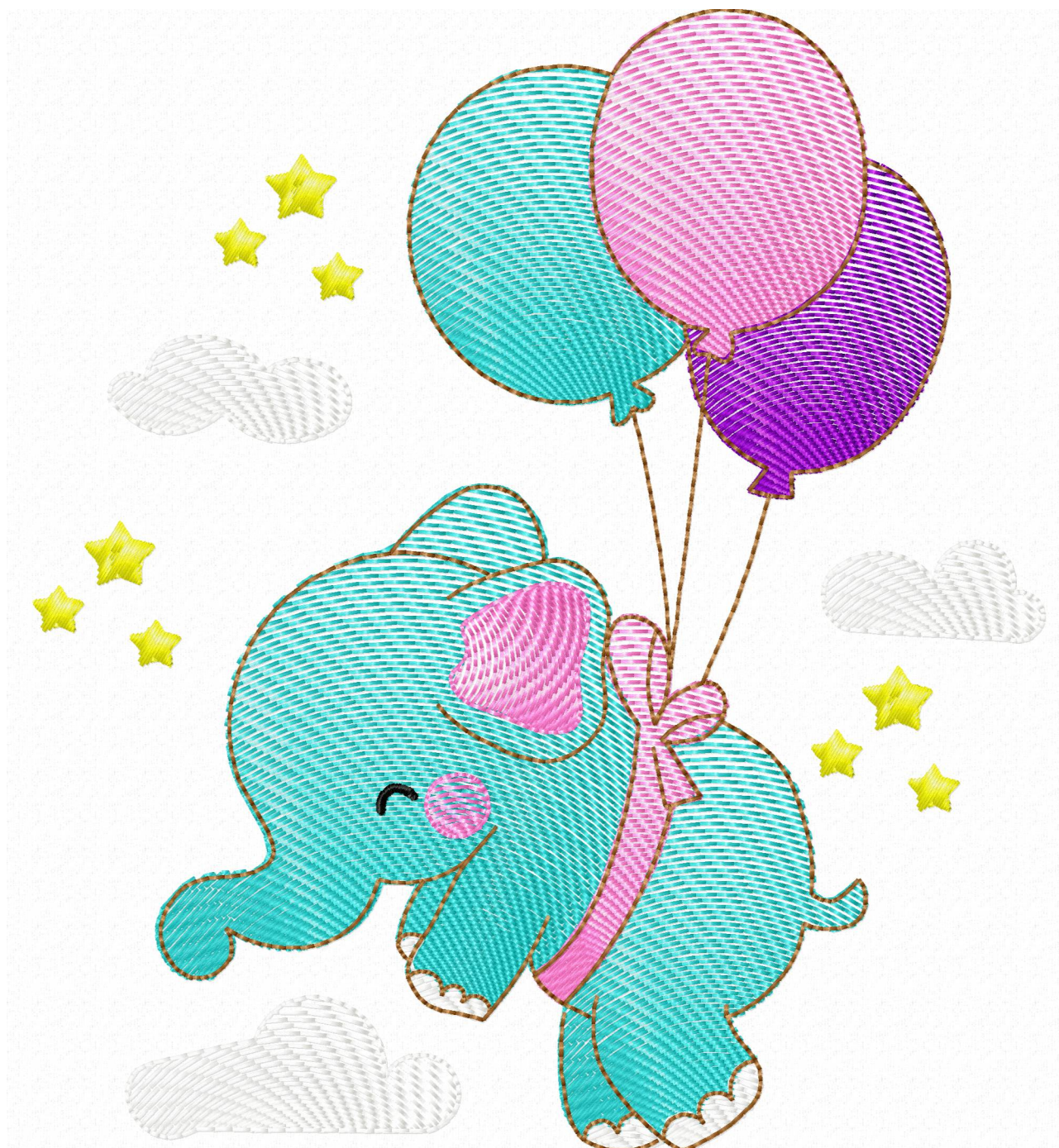


## Histogram

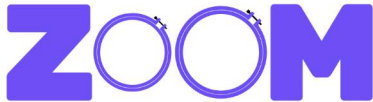
Stitches ratio diagram:



( 3194 )	Stop 1
( 3429 )	Stop 2
( 4375 )	Stop 3
( 4458 )	Stop 4
( 5442 )	Stop 5
( 6332 )	Stop 6
( 7147 )	Stop 7
( 9786 )	Stop 8
( 10875 )	Stop 9
( 11805 )	End







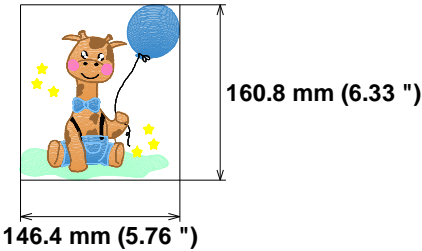
Embroidery Designs

[www.zoomembroidery.com](http://www.zoomembroidery.com)

Needle	Thread consumption
1 1735 st.	13.7% (6.6 m)
2 3788 st.	25.5% (12.3 m)
3 2408 st.	17.7% (8.5 m)
4 948 st.	7.5% (3.6 m)
5 3182 st.	21.4% (10.3 m)
6 575 st.	3.4% (1.6 m)
7 307 st.	1.9% (0.9 m)
8 155 st.	0.8% (0.4 m)
9 828 st.	8.1% (3.9 m)

Upper thread 48.1 m  
Bobbin 16.0 m

File: 2 (4).jef (Janome)  
Stitches: 13926  
Size: 146.4 x 160.8 mm (5.76 x 6.33 ")  
Begin: 73.2, 80.4 mm  
End: 107.6, 30.7 mm  
Start needle: 1  
Colors: 9/9 , Stops: 8  
Date: 6/9/2023



Histogram

Stitches ratio diagram:



- (1736) Stop 1
- (5524) Stop 2
- (7932) Stop 3
- (8880) Stop 4
- (12062) Stop 5
- (12637) Stop 6
- (12944) Stop 7
- (13099) Stop 8
- (13926) End



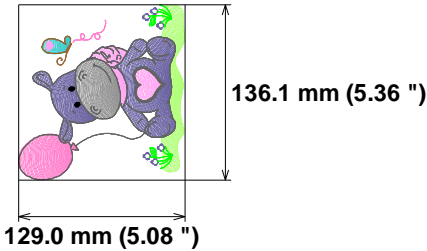


Needle Thread consumption

1	1149 st.	10.6% (4.2 m)
2	883 st.	7.1% (2.8 m)
3	916 st.	8.6% (3.4 m)
4	2608 st.	22.9% (9.1 m)
5	2941 st.	21.5% (8.5 m)
6	108 st.	1.0% (0.4 m)
7	261 st.	1.9% (0.7 m)
8	276 st.	1.6% (0.6 m)
9	774 st.	5.4% (2.2 m)
10	117 st.	1.3% (0.5 m)
11	489 st.	4.1% (1.6 m)
12	237 st.	2.0% (0.8 m)
13	963 st.	8.0% (3.2 m)
14	343 st.	2.8% (1.1 m)
15	183 st.	1.1% (0.4 m)

Upper thread	39.8 m
Bobbin	13.3 m

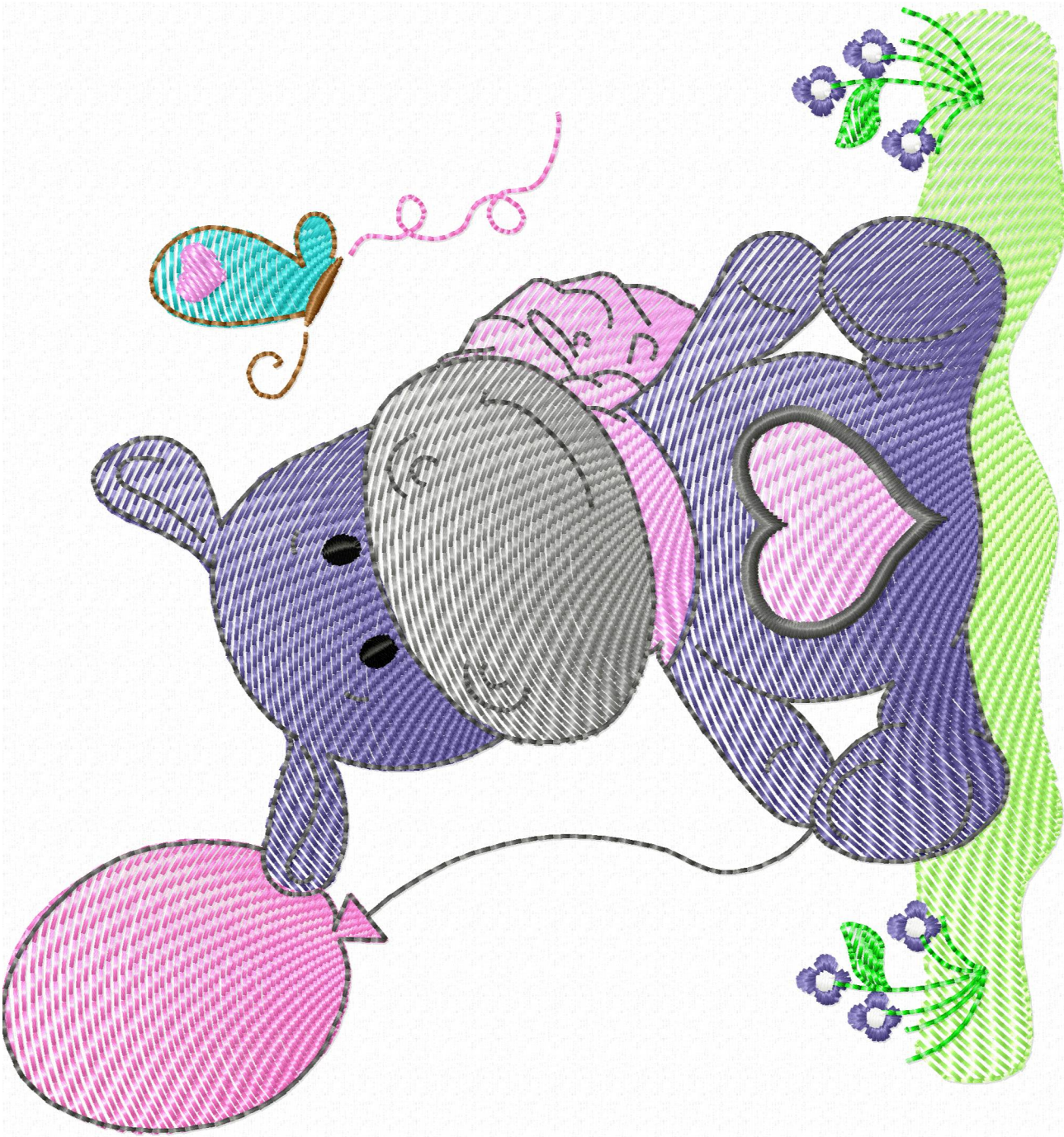
**File:** 3 (4).jef (Janome)  
**Stitches:** 12248  
**Size:** 129.0 x 136.1 mm (5.08 x 5.36 ")  
**Begin:** 64.5, 68.1 mm  
**End:** 67.4, 123.7 mm  
**Start needle:** 1  
**Colors:** 11/15 , Stops: 14  
**Date:** 6/9/2023



Histogram

- (1150) Stop 1
- (2033) Stop 2
- (2949) Stop 3
- (5557) Stop 4
- (8498) Stop 5
- (8606) Stop 6
- (8867) Stop 7
- (9143) Stop 8
- (9917) Stop 9
- (10034) Stop 10
- (10523) Stop 11
- (10760) Stop 12
- (11723) Stop 13
- (12066) Stop 14
- (12248) End

Stitches ratio diagram:



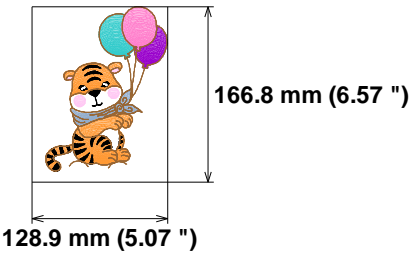


Needle Thread consumption

1	859 st.	5.3% (2.7 m)
2	2780 st.	18.4% (9.6 m)
3	2830 st.	18.4% (9.6 m)
4	98 st.	0.8% (0.4 m)
5	2363 st.	13.4% (7.0 m)
6	2956 st.	14.4% (7.5 m)
7	267 st.	1.6% (0.8 m)
8	900 st.	5.3% (2.8 m)
9	818 st.	5.3% (2.8 m)
10	683 st.	3.6% (1.9 m)
11	757 st.	4.6% (2.4 m)
12	132 st.	1.1% (0.6 m)
13	534 st.	1.9% (1.0 m)
14	728 st.	5.0% (2.6 m)
15	104 st.	0.9% (0.5 m)

Upper thread	52.2 m
Bobbin	17.4 m

File: 4 (4).jef (Janome)  
Stitches: 16809  
Size: 128.9 x 166.8 mm (5.07 x 6.57 ")  
Begin: 64.4, 83.4 mm  
End: 90.0, 16.8 mm  
Start needle: 1  
Colors: 9/15 , Stops: 14  
Date: 6/9/2023



Histogram

( 860 )	Stop 1
( 3640 )	Stop 2
( 6470 )	Stop 3
( 6568 )	Stop 4
( 8931 )	Stop 5
( 11887 )	Stop 6
( 12154 )	Stop 7
( 13054 )	Stop 8
( 13872 )	Stop 9
( 14555 )	Stop 10
( 15312 )	Stop 11
( 15444 )	Stop 12
( 15978 )	Stop 13
( 16706 )	Stop 14
( 16809 )	End

Stitches ratio diagram:



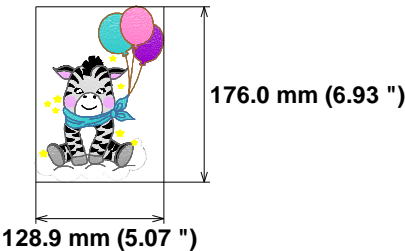


Needle Thread consumption

1	847 st.	4.2% (2.6 m)
2	785 st.	4.2% (2.7 m)
3	723 st.	3.2% (2.0 m)
4	763 st.	3.8% (2.4 m)
5	77 st.	0.5% (0.3 m)
6	2633 st.	14.4% (9.0 m)
7	195 st.	1.1% (0.7 m)
8	2631 st.	13.9% (8.8 m)
9	806 st.	4.1% (2.5 m)
10	436 st.	2.4% (1.5 m)
11	5050 st.	24.5% (15.4 m)
12	1600 st.	7.7% (4.9 m)
13	882 st.	4.4% (2.7 m)
14	947 st.	3.9% (2.5 m)
15	671 st.	2.2% (1.4 m)
16	108 st.	0.4% (0.2 m)
17	592 st.	4.2% (2.7 m)
18	134 st.	0.8% (0.5 m)

Upper thread 62.9 m  
Bobbin 21.0 m

File: 5 (4).jef (Janome)  
Stitches: 19880  
Size: 128.9 x 176.0 mm (5.07 x 6.93 ")  
Begin: 64.4, 88.0 mm  
End: 99.3, 16.3 mm  
Start needle: 1  
Colors: 12/18 , Stops: 17  
Date: 6/9/2023



Histogram

Stitches ratio diagram:



- ( 848 ) Stop 1
- ( 1633 ) Stop 2
- ( 2356 ) Stop 3
- ( 3119 ) Stop 4
- ( 3196 ) Stop 5
- ( 5829 ) Stop 6
- ( 6024 ) Stop 7
- ( 8655 ) Stop 8
- ( 9461 ) Stop 9
- ( 9897 ) Stop 10
- ( 14947 ) Stop 11
- ( 16547 ) Stop 12
- ( 17429 ) Stop 13
- ( 18376 ) Stop 14
- ( 19047 ) Stop 15
- ( 19155 ) Stop 16
- ( 19747 ) Stop 17
- ( 19880 ) End

