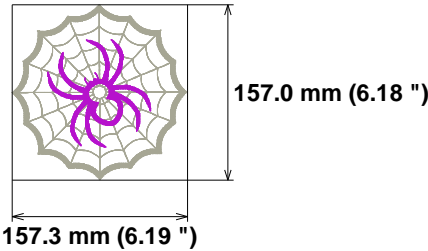


Needle	Thread consumption
1 273 st.	1.4% (1.0 m)
2 268 st.	1.2% (0.8 m)
3 3875 st.	29.6% (20.5 m)
4 75 st.	0.4% (0.3 m)
5 62 st.	0.2% (0.2 m)
6 15 st.	0.0% (0.0 m)
7 154 st.	1.3% (0.9 m)
8 4594 st.	26.9% (18.6 m)
9 272 st.	1.4% (0.9 m)
10 466 st.	4.7% (3.2 m)
11 2954 st.	32.8% (22.7 m)

Upper thread 69.2 m
Bobbin 23.1 m

File: 6X6SPIDERCOASTER.jef (Janome)
Stitches: 13008
Size: 157.3 x 157.0 mm (6.19 x 6.18 ")
Begin: 78.6, 78.5 mm
End: 78.3, 153.9 mm
Start needle: 1
Colors: 5/11 , Stops: 10
Date: 6/9/2023

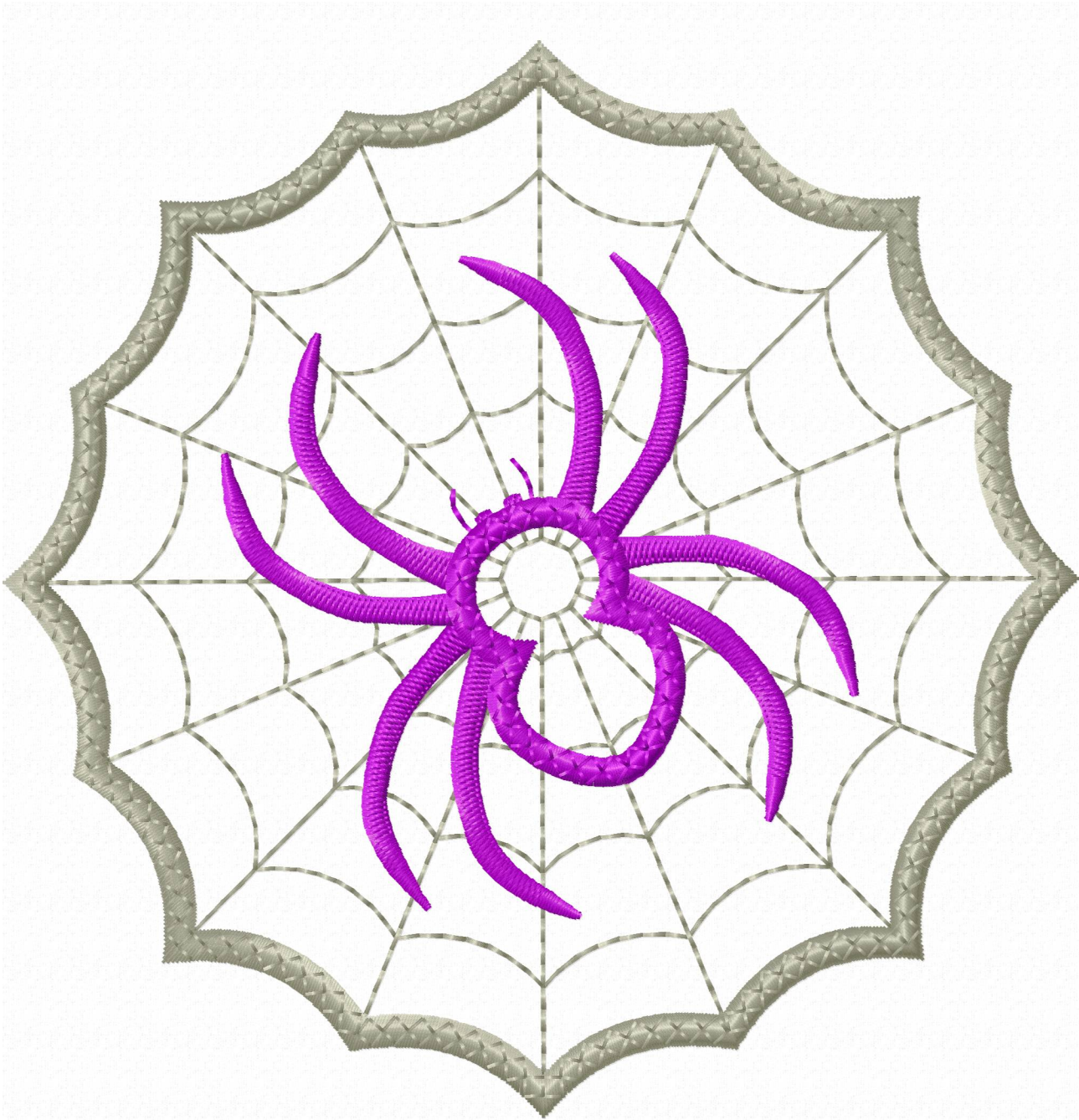


Histogram

Stitches ratio diagram:



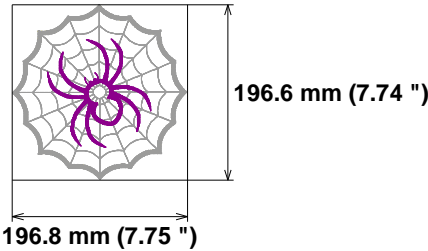
- (274) Stop 1
- (542) Stop 2
- (4417) Stop 3
- (4492) Stop 4
- (4554) Stop 5
- (4569) Stop 6
- (4723) Stop 7
- (9317) Stop 8
- (9589) Stop 9
- (10055) Stop 10
- (13008) End



Needle	Thread consumption
1 341 st.	1.4% (1.2 m)
2 334 st.	1.2% (1.0 m)
3 4768 st.	29.5% (25.8 m)
4 91 st.	0.4% (0.4 m)
5 75 st.	0.2% (0.2 m)
6 17 st.	0.0% (0.0 m)
7 186 st.	1.3% (1.1 m)
8 5693 st.	27.0% (23.7 m)
9 338 st.	1.3% (1.2 m)
10 590 st.	4.8% (4.2 m)
11 3686 st.	32.9% (28.8 m)

Upper thread 87.7 m
Bobbin 29.2 m

File: 8X8SPIDERCOASTER.jef (Janome)
Stitches: 16119
Size: 196.8 x 196.6 mm (7.75 x 7.74 ")
Begin: 98.4, 98.3 mm
End: 98.0, 193.4 mm
Start needle: 1
Colors: 5/11 , Stops: 10
Date: 6/9/2023

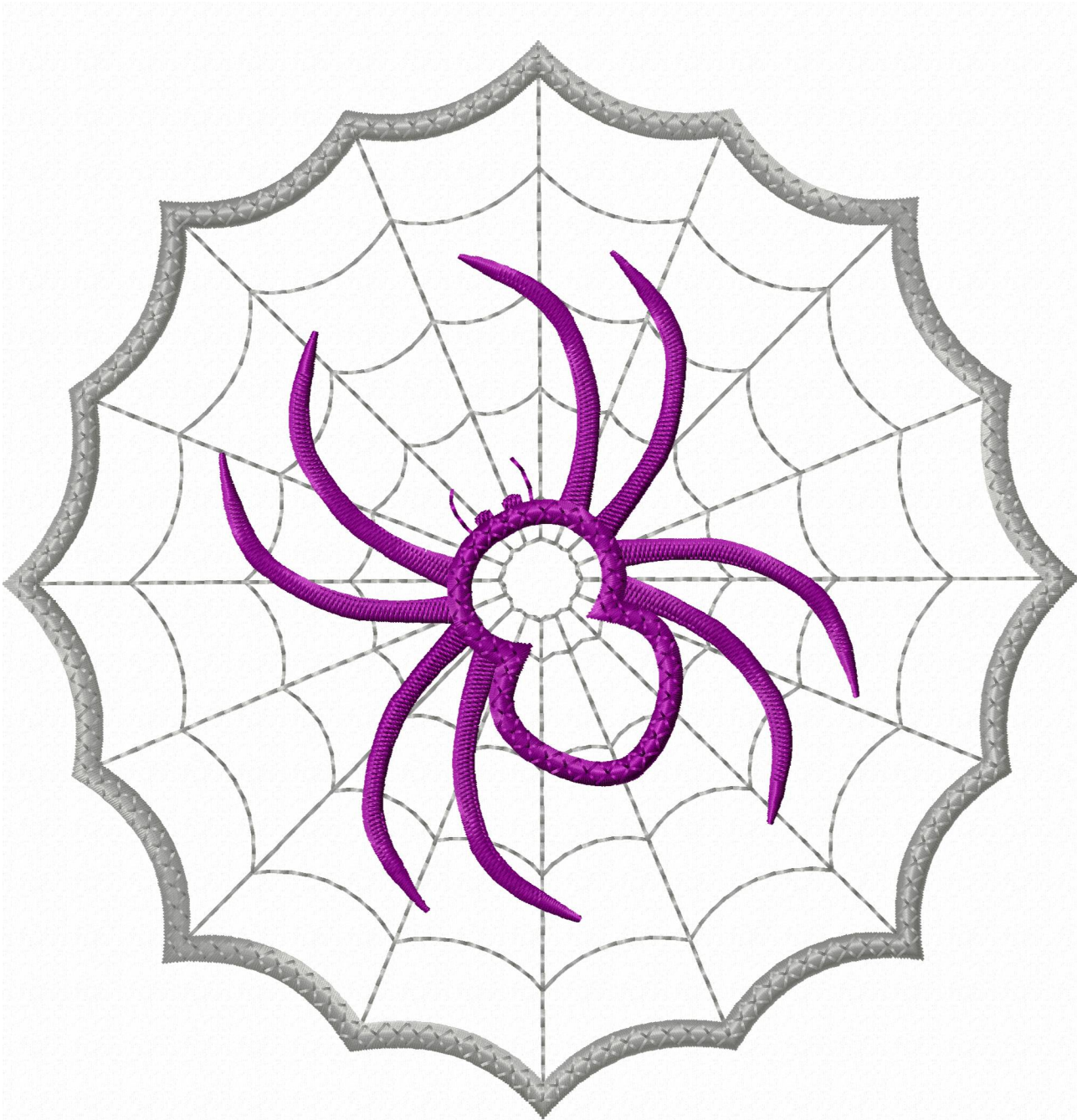


Histogram

Stitches ratio diagram:



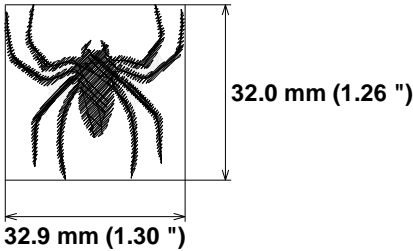
- (342) Stop 1
- (676) Stop 2
- (5444) Stop 3
- (5535) Stop 4
- (5610) Stop 5
- (5627) Stop 6
- (5813) Stop 7
- (11506) Stop 8
- (11844) Stop 9
- (12434) Stop 10
- (16119) End



Needle Thread consumption

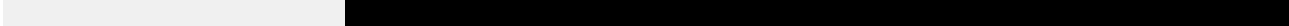
1	515 st.	19.2% (0.9 m)
2	1420 st.	80.8% (3.9 m)
Upper thread		4.8 m
Bobbin		1.6 m

File: ARANHA.jef (Janome)
Stitches: 1935
Size: 32.9 x 32.0 mm (1.30 x 1.26 ")
Begin: 16.4, 16.0 mm
End: 13.3, 21.1 mm
Start needle: 1
Colors: 2/2 , Stops: 1
Date: 6/9/2023

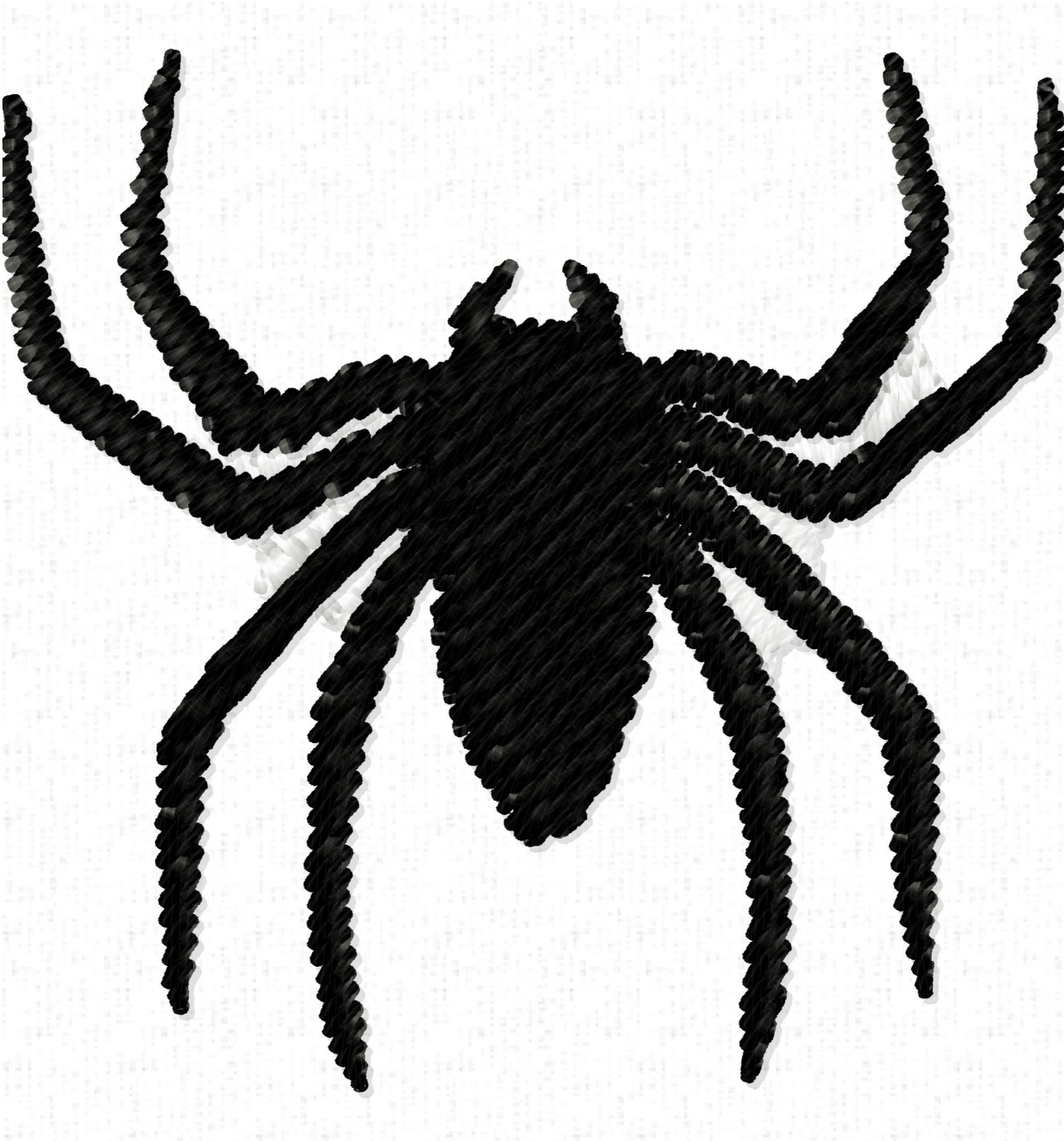


Histogram

Stitches ratio diagram:

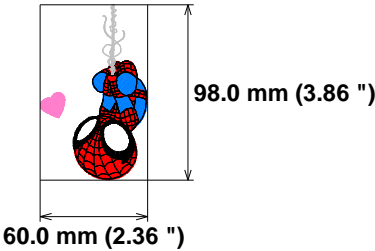


(516) Stop 1
(1935) End



Needle	Thread consumption
1 1056 st.	16.1% (4.4 m)
2 600 st.	10.3% (2.8 m)
3 2106 st.	33.6% (9.1 m)
4 3167 st.	29.5% (8.0 m)
5 683 st.	5.2% (1.4 m)
6 375 st.	5.3% (1.4 m)
Upper thread	27.1 m
Bobbin	9.0 m

File: **HOMEM ARANHA 02 10x10.jef** (Janome)
Stitches: **7987**
Size: **60.0 x 98.0 mm (2.36 x 3.86 ")**
Begin: **30.0, 49.0 mm**
End: **10.4, 34.9 mm**
Start needle: **1**
Colors: **6/6 , Stops: 5**
Date: **6/9/2023**



Histogram

Stitches ratio diagram:

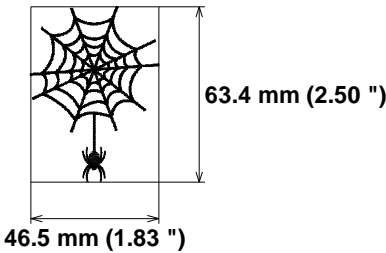


- (1057) Stop 1
- (1657) Stop 2
- (3763) Stop 3
- (6930) Stop 4
- (7613) Stop 5
- (7987) End



Needle **Thread consumption**
1 ■ 4447 st. 100.0% (7.4 m)
Upper thread 7.4 m
Bobbin 2.5 m

File: Spider Web Stitched 2_5 Inch.jef (Janome)
Stitches: 4447
Size: 46.5 x 63.4 mm (1.83 x 2.50 ")
Begin: 23.2, 31.7 mm
End: 23.5, 10.8 mm
Start needle: 1
Colors: 1/1 , **Stops:** 0
Date: 6/9/2023



Histogram
(4447) End

