

Needle Thread consumption

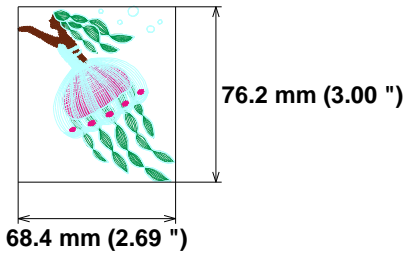
1	567 st.	11.0% (1.9 m)
2	939 st.	22.6% (3.9 m)
3	671 st.	13.3% (2.3 m)
4	2453 st.	46.5% (8.1 m)
5	168 st.	3.7% (0.7 m)
6	161 st.	2.9% (0.5 m)

Upper thread	17.4 m
Bobbin	5.8 m

File: ut23321.PES (Babylock, Bernina, Brother #PES0001)
Stitches: 4959
Size: 68.4 x 76.2 mm (2.69 x 3.00 ")
Begin: 34.2, 38.1 mm
End: 54.4, 38.6 mm
Start needle: 1
Colors: 4/6 , Stops: 5
Date: 13-09-23

This area is reserved for your logo. Place logo.bmp file (width: 721 , height: 237 pixels) in the same folder as embird.exe file.

This area is reserved for your address information. Place address.txt text file containing your address in the same folder as embird.exe file.

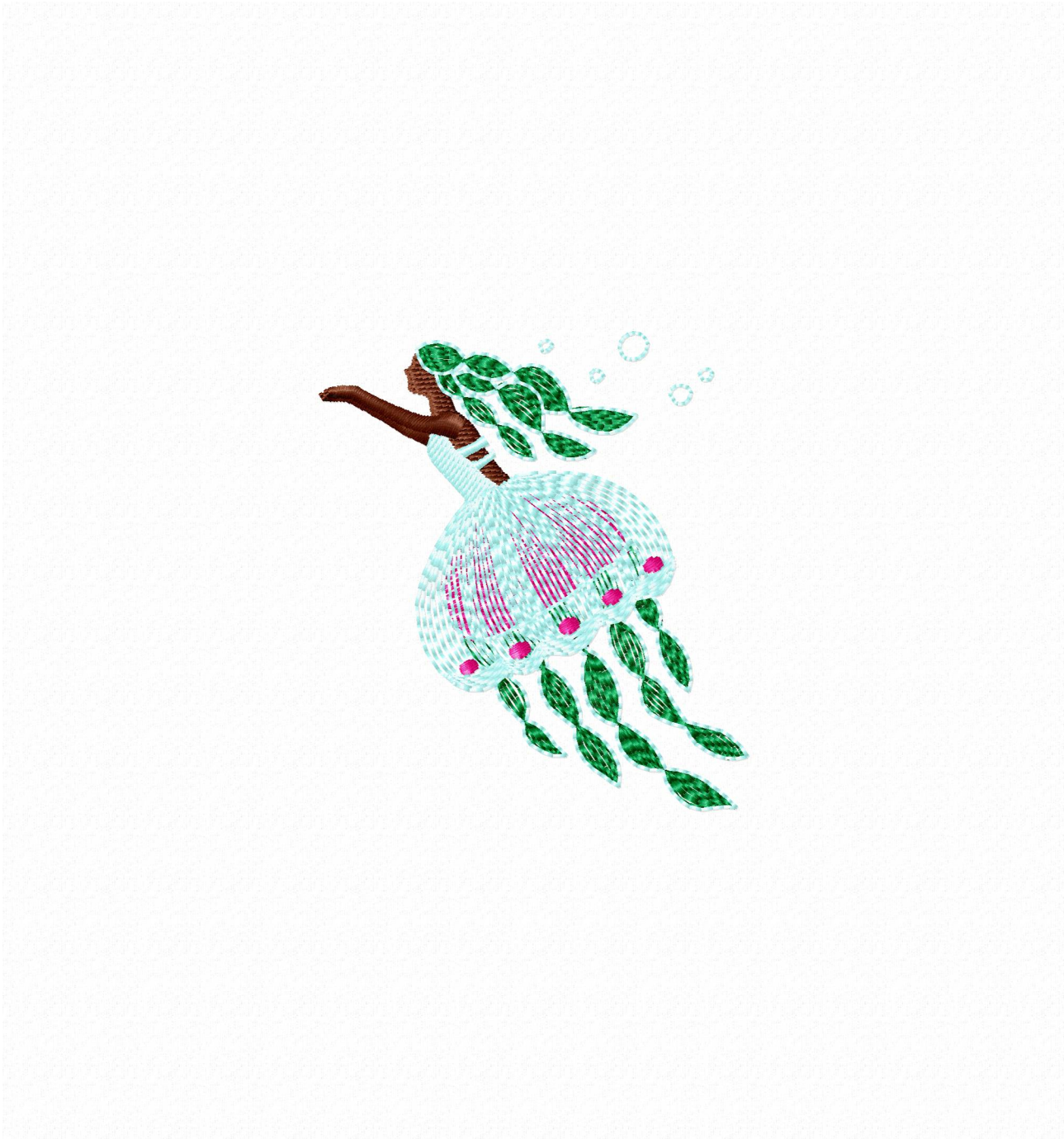


Histogram

Stitches ratio diagram:



- (568) Stop 1
- (1507) Stop 2
- (2178) Stop 3
- (4631) Stop 4
- (4799) Stop 5
- (4959) End



Needle Thread consumption

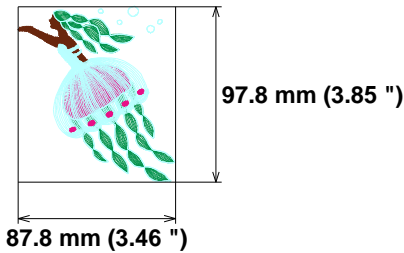
1	790 st.	11.7% (3.0 m)
2	1339 st.	22.7% (5.9 m)
3	1002 st.	14.1% (3.7 m)
4	3372 st.	44.9% (11.7 m)
5	216 st.	3.9% (1.0 m)
6	201 st.	2.8% (0.7 m)

Upper thread	26.0 m
Bobbin	8.7 m

File: ut23320.PES (Babylock, Bernina, Brother #PES0001)
 Stitches: 6920
 Size: 87.8 x 97.8 mm (3.46 x 3.85 ")
 Begin: 43.9, 48.9 mm
 End: 69.7, 49.5 mm
 Start needle: 1
 Colors: 4/6 , Stops: 5
 Date: 13-09-23

This area is reserved for your logo. Place logo.bmp file (width: 721 , height: 237 pixels) in the same folder as embird.exe file.

This area is reserved for your address information. Place address.txt text file containing your address in the same folder as embird.exe file.

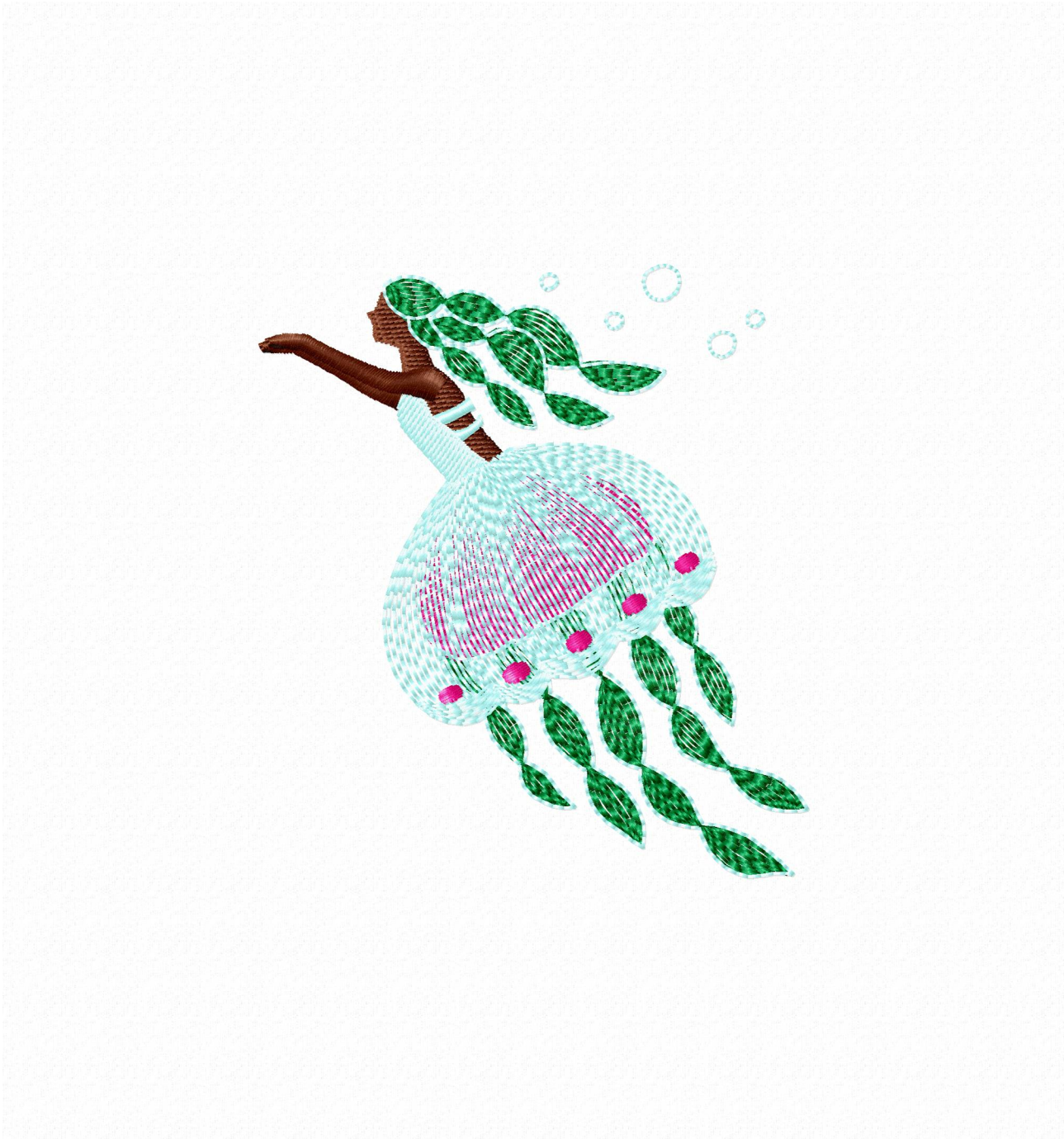


Histogram

Stitches ratio diagram:



(791)	Stop 1
(2130)	Stop 2
(3132)	Stop 3
(6504)	Stop 4
(6720)	Stop 5
(6920)	End



Needle Thread consumption

1	1078 st.	12.2% (4.6 m)
2	1986 st.	23.9% (9.1 m)
3	1341 st.	14.0% (5.3 m)
4	4454 st.	43.1% (16.3 m)
5	267 st.	4.1% (1.5 m)
6	233 st.	2.7% (1.0 m)

Upper thread	37.8 m
Bobbin	12.6 m

File: ut23319.PES (Babylock, Bernina, Brother #PES0001)

Stitches: 9359

Size: 110.6 x 123.2 mm (4.35 x 4.85 ")

Begin: 55.3, 61.6 mm

End: 87.8, 62.3 mm

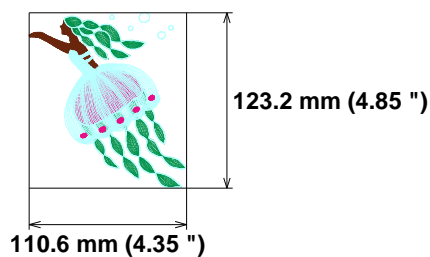
Start needle: 1

Colors: 4/6 , Stops: 5

Date: 13-09-23

This area is reserved for your logo. Place logo.bmp file (width: 721 , height: 237 pixels) in the same folder as embird.exe file.

This area is reserved for your address information. Place address.txt text file containing your address in the same folder as embird.exe file.

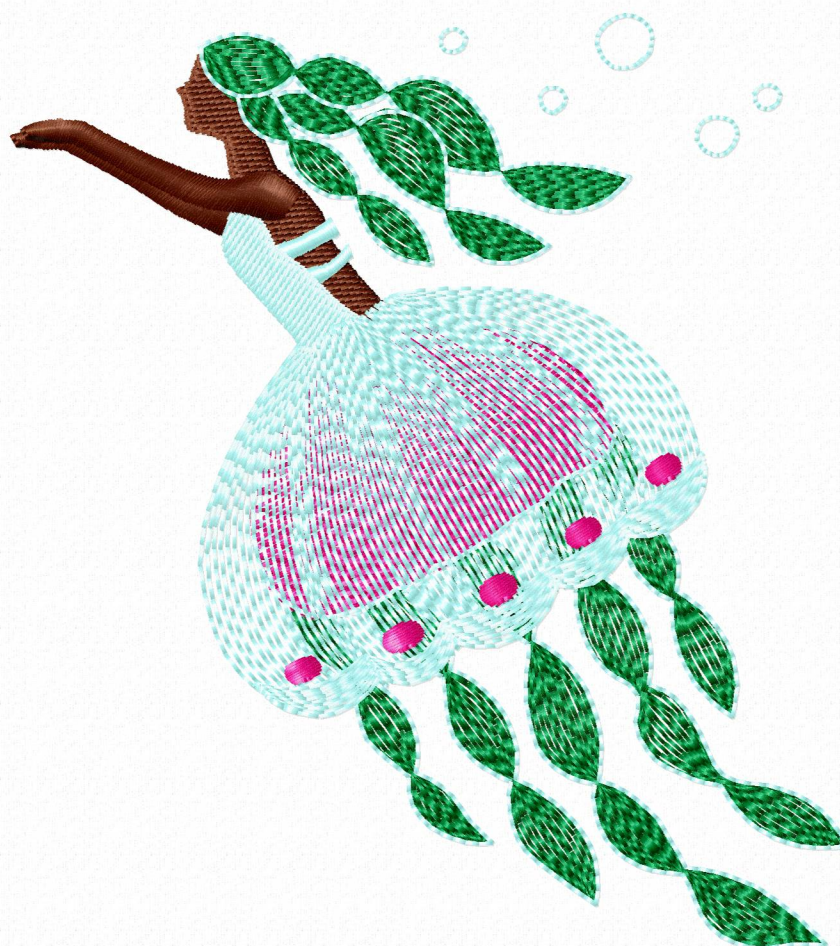


Histogram

Stitches ratio diagram:



(1079)	Stop 1
(3065)	Stop 2
(4406)	Stop 3
(8860)	Stop 4
(9127)	Stop 5
(9359)	End



Needle Thread consumption

1	1399 st.	12.4% (6.5 m)
2	2717 st.	24.1% (12.6 m)
3	1797 st.	14.1% (7.4 m)
4	5886 st.	42.6% (22.3 m)
5	319 st.	4.1% (2.2 m)
6	267 st.	2.7% (1.4 m)

Upper thread	52.4 m
Bobbin	17.5 m

File: ut23318.PES (Babylock, Bernina, Brother #PES0040)

Stitches: 12385

Size: 133.4 x 148.4 mm (5.25 x 5.84 ")

Begin: 66.7, 74.2 mm

End: 105.8, 75.1 mm

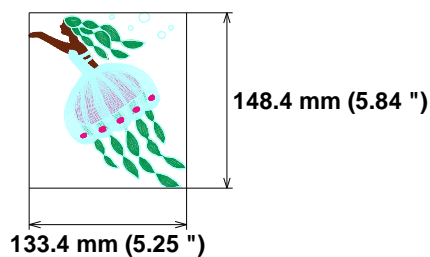
Start needle: 1

Colors: 4/6 , Stops: 5

Date: 13-09-23

This area is reserved for your logo. Place logo.bmp file (width: 721 , height: 237 pixels) in the same folder as embird.exe file.

This area is reserved for your address information. Place address.txt text file containing your address in the same folder as embird.exe file.



Histogram

Stitches ratio diagram:



(1400)	Stop 1
(4117)	Stop 2
(5914)	Stop 3
(11800)	Stop 4
(12119)	Stop 5
(12385)	End

