

Needle Thread consumption

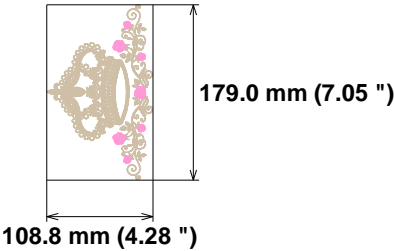
1	17289 st.	89.1% (47.2 m)
2	2600 st.	10.9% (5.8 m)

Upper thread	53.0 m
Bobbin	17.7 m

File: coroa ra....mo G (Babylock, Bernina, Brother #PES0001)
Stitches: 19889
Size: 108.8 x 179.0 mm (4.28 x 7.05 ")
Begin: 54.4, 89.5 mm
End: 81.4, 157.5 mm
Start needle: 1
Colors: 2/2 , Stops: 1
Date: 13-09-23

This area is reserved for your logo. Place logo.bmp file (width: 721 , height: 237 pixels) in the same folder as embird.exe file.

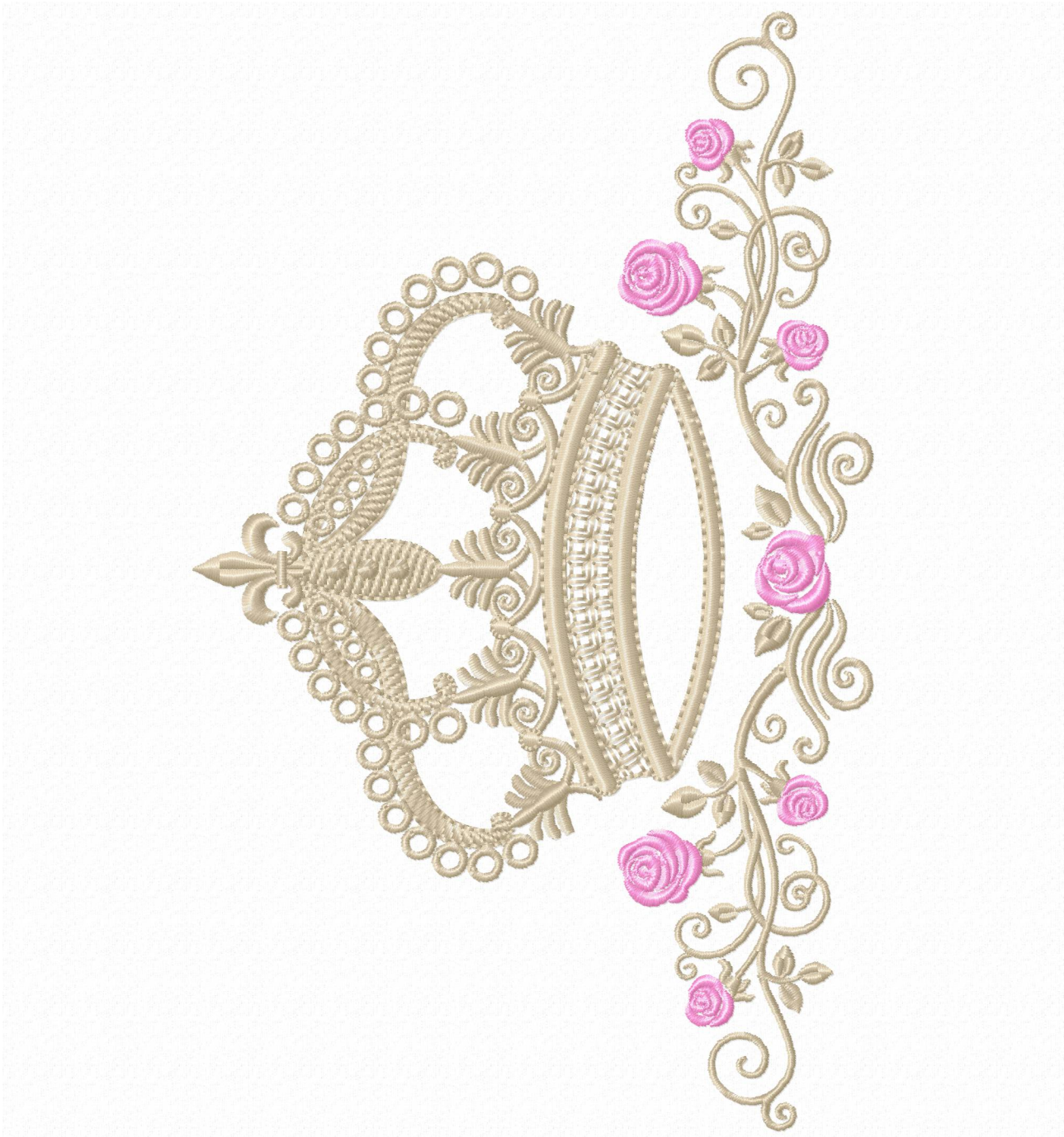
This area is reserved for your address information. Place address.txt text file containing your address in the same folder as embird.exe file.



Histogram

(17290) Stop 1
(19889) End

Stitches ratio diagram:



Needle Thread consumption

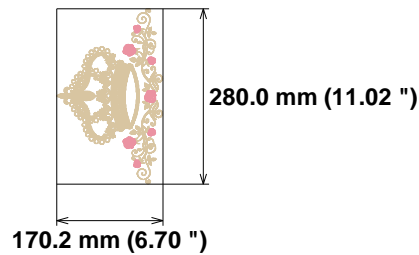
1	27466 st.	89.4% (99.4 m)
2	3803 st.	10.6% (11.8 m)

Upper thread	111.2 m
Bobbin	37.1 m

File: coroa ra...o BP (Babylock, Bernina, Brother #PES0060)**Design name: coroa ramo BP****Stitches: 31269****Size: 170.2 x 280.0 mm (6.70 x 11.02 ")****Begin: 85.1, 140.0 mm****End: 127.6, 246.6 mm****Start needle: 1****Colors: 2/2 , Stops: 1****Date: 13-09-23**

This area is reserved for your logo. Place logo.bmp file (width: 721 , height: 237 pixels) in the same folder as embird.exe file.

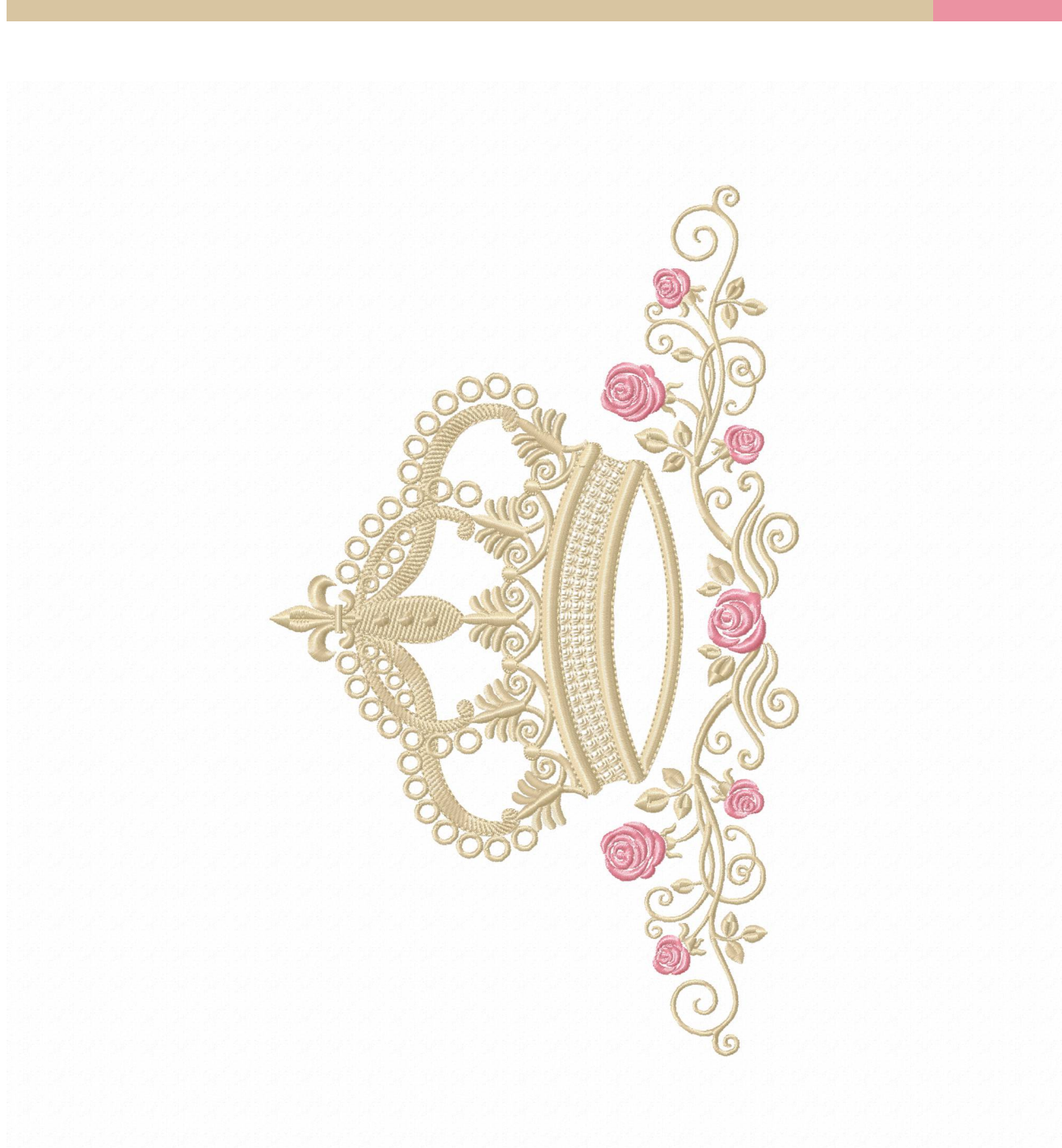
This area is reserved for your address information. Place address.txt text file containing your address in the same folder as embird.exe file.

**Histogram**

(27467) Stop 1
(31269) End

Title: coroa ramo BP

Stitches ratio diagram:



Needle Thread consumption

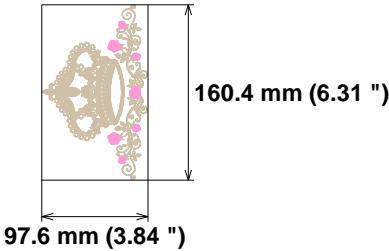
1	15672 st.	89.0% (39.9 m)
2	2383 st.	11.0% (4.9 m)

Upper thread	44.8 m
Bobbin	14.9 m

File: coroa ra...16CM (Babylock, Bernina, Brother #PES0001)
Stitches: 18055
Size: 97.6 x 160.4 mm (3.84 x 6.31 ")
Begin: 48.8, 80.2 mm
End: 73.0, 141.2 mm
Start needle: 1
Colors: 2/2 , Stops: 1
Date: 13-09-23

This area is reserved for your logo. Place logo.bmp file (width: 721 , height: 237 pixels) in the same folder as embird.exe file.

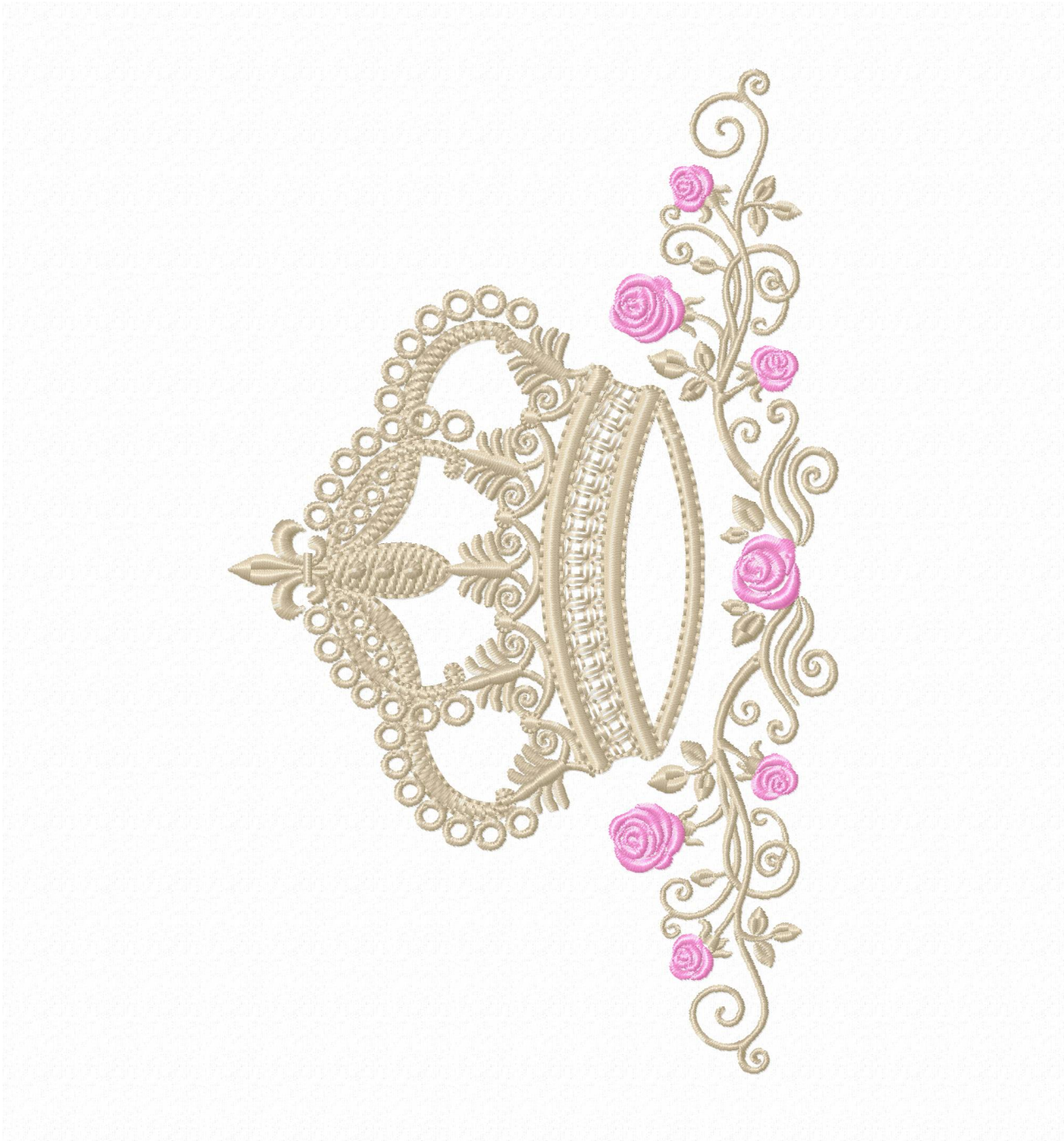
This area is reserved for your address information. Place address.txt text file containing your address in the same folder as embird.exe file.



Histogram

(15673) Stop 1
(18055) End

Stitches ratio diagram:



Needle Thread consumption

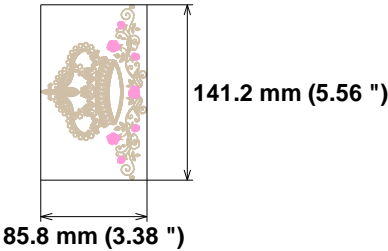
1	13363 st.	88.9% (32.5 m)
2	2072 st.	11.1% (4.0 m)

Upper thread	36.5 m
Bobbin	12.2 m

File: coroa ra...14CM (Babylock, Bernina, Brother #PES0001)
Stitches: 15435
Size: 85.8 x 141.2 mm (3.38 x 5.56 ")
Begin: 42.9, 70.6 mm
End: 64.1, 124.3 mm
Start needle: 1
Colors: 2/2 , Stops: 1
Date: 13-09-23

This area is reserved for your logo. Place logo.bmp file (width: 721 , height: 237 pixels) in the same folder as embird.exe file.

This area is reserved for your address information. Place address.txt text file containing your address in the same folder as embird.exe file.



Histogram

(13364) Stop 1
(15435) End

Stitches ratio diagram:

