

## Needle Thread consumption

1	1789 st.	4.4% (7.7 m)
2	11204 st.	37.9% (65.4 m)
3	1375 st.	3.6% (6.2 m)
4	1360 st.	4.5% (7.8 m)
5	1246 st.	3.1% (5.4 m)
6	537 st.	1.5% (2.7 m)
7	5817 st.	19.7% (33.9 m)
8	3324 st.	9.4% (16.2 m)
9	649 st.	1.6% (2.8 m)
10	1852 st.	5.1% (8.8 m)
11	2504 st.	5.9% (10.2 m)
12	253 st.	0.6% (1.1 m)
13	251 st.	0.6% (1.1 m)
14	831 st.	2.0% (3.4 m)

Upper thread 172.6 m  
Bobbin 57.5 m

File: Bee-with-jar-of-honey-88.jef (Janome)

Stitches: 32992

Size: 138.0 x 182.8 mm (5.43 x 7.20 ")

Begin: 69.0, 91.4 mm

End: 7.7, 44.3 mm

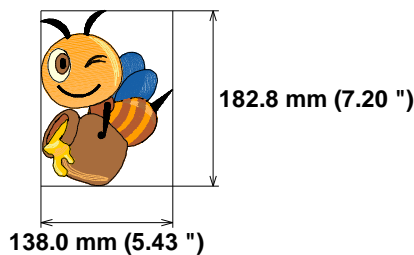
Start needle: 1

Colors: 9/14 , Stops: 13

Date: 13-09-23

This area is reserved for  
your logo. Place logo.bmp  
file (width: 721 , height: 237 pixels)  
in the same folder as  
embird.exe file.

This area is reserved for  
your address information.  
Place address.txt text file  
containing your address in the  
same folder as embird.exe  
file.

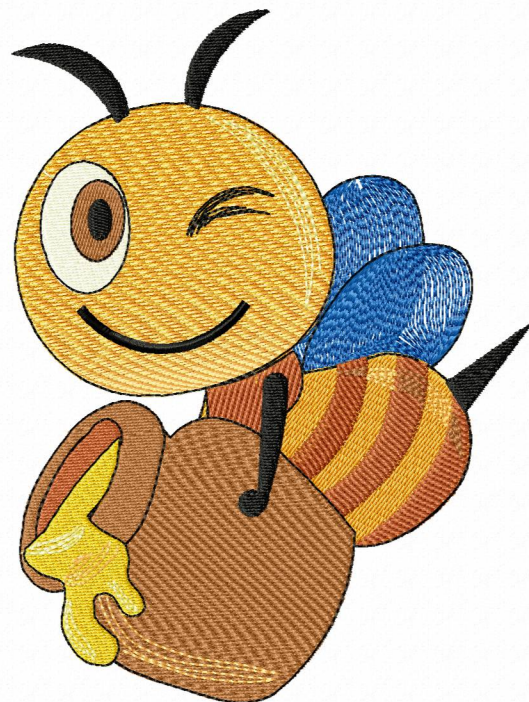


## Histogram

Stitches ratio diagram:



(1790) Stop 1  
(12994) Stop 2  
(14369) Stop 3  
(15729) Stop 4  
(16975) Stop 5  
(17512) Stop 6  
(23329) Stop 7  
(26653) Stop 8  
(27302) Stop 9  
(29154) Stop 10  
(31658) Stop 11  
(31911) Stop 12  
(32162) Stop 13  
(32992) End



## Needle Thread consumption

1	2999 st.	4.5% (13.3 m)
2	19095 st.	38.6% (114.9 m)
3	2182 st.	3.6% (10.7 m)
4	2258 st.	4.5% (13.4 m)
5	1931 st.	3.1% (9.2 m)
6	872 st.	1.5% (4.6 m)
7	9891 st.	20.0% (59.5 m)
8	5238 st.	9.3% (27.6 m)
9	995 st.	1.6% (4.7 m)
10	2981 st.	5.1% (15.3 m)
11	3700 st.	5.7% (16.9 m)
12	310 st.	0.5% (1.4 m)
13	310 st.	0.5% (1.5 m)
14	993 st.	1.5% (4.5 m)

Upper thread 297.5 m  
Bobbin 99.2 m

File: Bee-with-jar-of-honey-810.jef (Janome)

Stitches: 53755

Size: 183.6 x 243.4 mm (7.23 x 9.58 ")

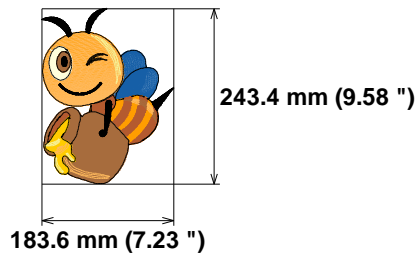
Begin: 91.8, 121.7 mm

End: 10.7, 59.0 mm

Start needle: 1

Colors: 9/14 , Stops: 13

Date: 13-09-23



This area is reserved for your logo. Place logo.bmp file (width: 721 , height: 237 pixels) in the same folder as embird.exe file.

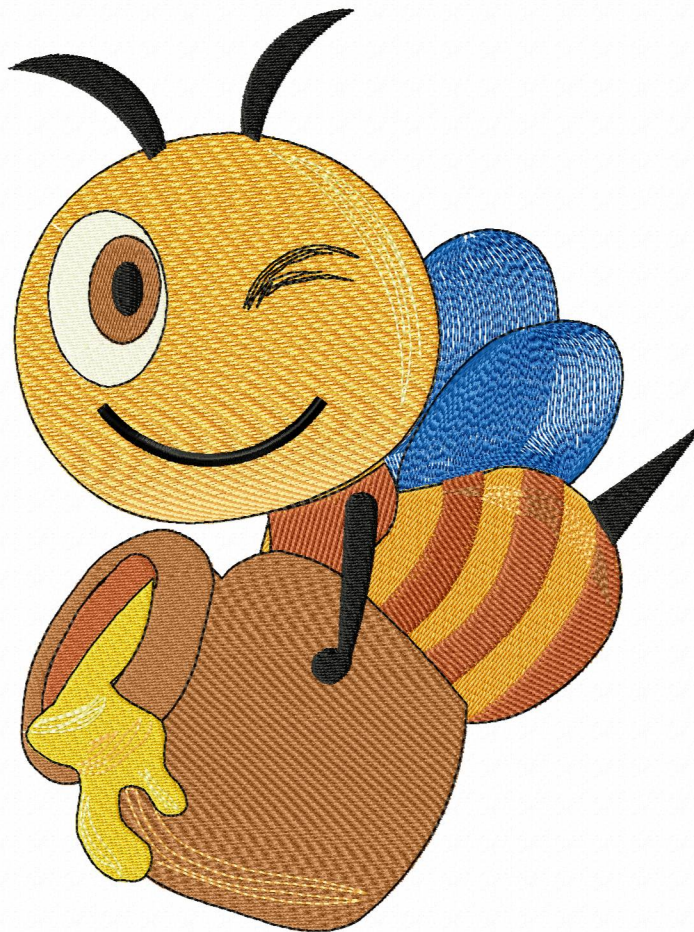
This area is reserved for your address information. Place address.txt text file containing your address in the same folder as embird.exe file.

## Histogram

Stitches ratio diagram:



( 3000 ) Stop 1  
( 22095 ) Stop 2  
( 24277 ) Stop 3  
( 26535 ) Stop 4  
( 28466 ) Stop 5  
( 29338 ) Stop 6  
( 39229 ) Stop 7  
( 44467 ) Stop 8  
( 45462 ) Stop 9  
( 48443 ) Stop 10  
( 52143 ) Stop 11  
( 52453 ) Stop 12  
( 52763 ) Stop 13  
( 53755 ) End





## Needle Thread consumption

1	2054 st.	4.3% (9.0 m)
2	13612 st.	38.3% (80.5 m)
3	1625 st.	3.6% (7.6 m)
4	1615 st.	4.5% (9.4 m)
5	1450 st.	3.1% (6.5 m)
6	645 st.	1.5% (3.2 m)
7	7051 st.	19.8% (41.7 m)
8	3942 st.	9.4% (19.8 m)
9	749 st.	1.6% (3.4 m)
10	2190 st.	5.1% (10.8 m)
11	2848 st.	5.8% (12.2 m)
12	269 st.	0.6% (1.2 m)
13	274 st.	0.6% (1.2 m)
14	883 st.	1.8% (3.8 m)

Upper thread 210.2 m  
Bobbin 70.1 m

File: Bee-with-jar-of-honey-6-10.jef (Janome)

Stitches: 39207

Size: 152.8 x 203.2 mm (6.02 x 8.00 ")

Begin: 76.5, 101.6 mm

End: 8.6, 49.2 mm

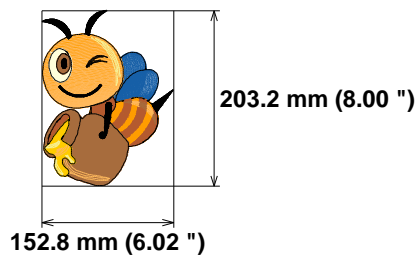
Start needle: 1

Colors: 9/14 , Stops: 13

Date: 13-09-23

This area is reserved for  
your logo. Place logo.bmp  
file (width: 721 , height: 237 pixels)  
in the same folder as  
embird.exe file.

This area is reserved for  
your address information.  
Place address.txt text file  
containing your address in the  
same folder as embird.exe  
file.

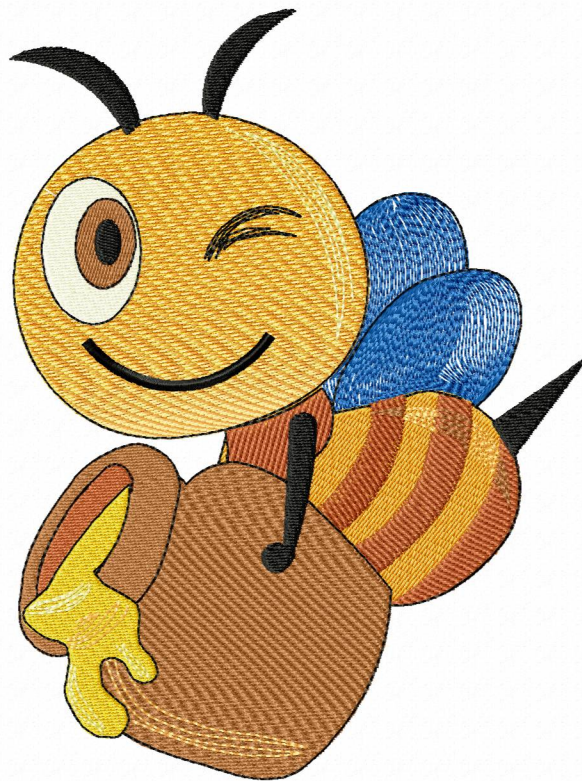


## Histogram

Stitches ratio diagram:



( 2055 ) Stop 1  
( 15667 ) Stop 2  
( 17292 ) Stop 3  
( 18907 ) Stop 4  
( 20357 ) Stop 5  
( 21002 ) Stop 6  
( 28053 ) Stop 7  
( 31995 ) Stop 8  
( 32744 ) Stop 9  
( 34934 ) Stop 10  
( 37782 ) Stop 11  
( 38051 ) Stop 12  
( 38325 ) Stop 13  
( 39207 ) End





## Needle Thread consumption

1	1560 st.	4.5% (6.6 m)
2	9544 st.	37.7% (55.2 m)
3	1202 st.	3.6% (5.3 m)
4	1147 st.	4.4% (6.5 m)
5	1091 st.	3.1% (4.6 m)
6	470 st.	1.5% (2.3 m)
7	4937 st.	19.5% (28.6 m)
8	2879 st.	9.4% (13.7 m)
9	561 st.	1.6% (2.4 m)
10	1619 st.	5.1% (7.5 m)
11	2223 st.	6.0% (8.8 m)
12	237 st.	0.7% (1.0 m)
13	242 st.	0.7% (1.0 m)
14	780 st.	2.2% (3.2 m)

Upper thread 146.6 m  
Bobbin 48.9 m

File: Bee-with-jar-of-honey-57.jef (Janome)

Stitches: 28492

Size: 126.8 x 167.8 mm (4.99 x 6.61 ")

Begin: 63.4, 83.9 mm

End: 7.3, 40.6 mm

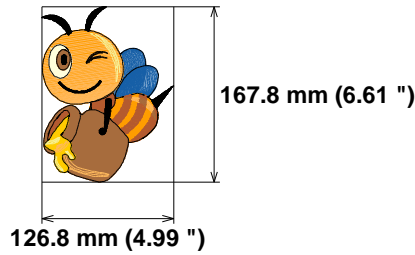
Start needle: 1

Colors: 9/14 , Stops: 13

Date: 13-09-23

This area is reserved for  
your logo. Place logo.bmp  
file (width: 721 , height: 237 pixels)  
in the same folder as  
embird.exe file.

This area is reserved for  
your address information.  
Place address.txt text file  
containing your address in the  
same folder as embird.exe  
file.

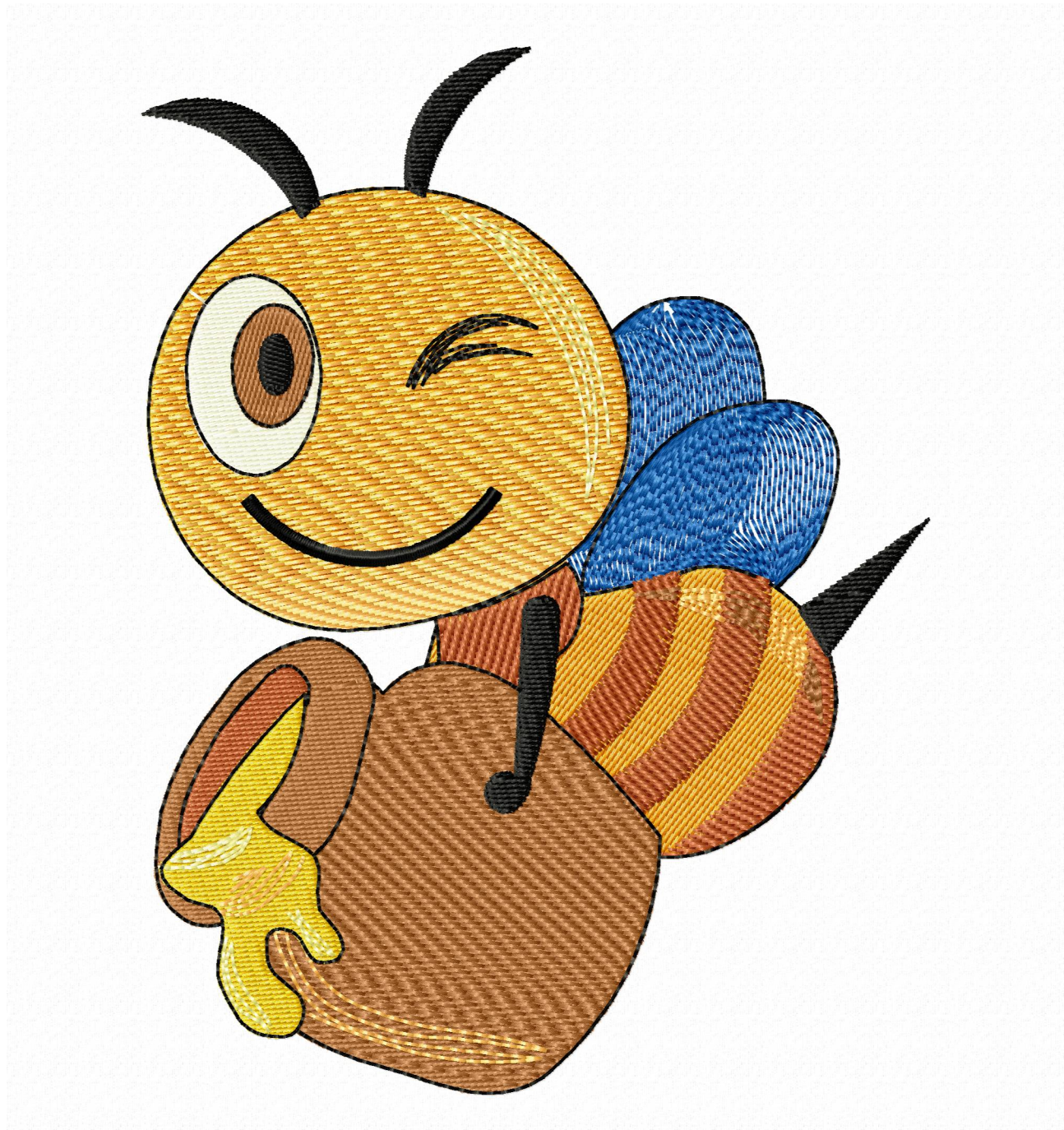


## Histogram

Stitches ratio diagram:



(1561) Stop 1  
(11105) Stop 2  
(12307) Stop 3  
(13454) Stop 4  
(14545) Stop 5  
(15015) Stop 6  
(19952) Stop 7  
(22831) Stop 8  
(23392) Stop 9  
(25011) Stop 10  
(27234) Stop 11  
(27471) Stop 12  
(27713) Stop 13  
(28492) End





This area is reserved for your logo. Place logo.bmp file (width: 721 , height: 237 pixels) in the same folder as embird.exe file.

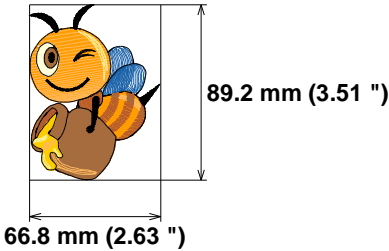
This area is reserved for your address information. Place address.txt text file containing your address in the same folder as embird.exe file.

Needle Thread consumption

1	455 st.	3.8% (1.7 m)
2	3115 st.	36.0% (16.2 m)
3	489 st.	3.7% (1.7 m)
4	391 st.	4.4% (2.0 m)
5	461 st.	3.2% (1.4 m)
6	132 st.	1.2% (0.5 m)
7	1635 st.	18.7% (8.4 m)
8	1139 st.	9.6% (4.3 m)
9	168 st.	1.3% (0.6 m)
10	632 st.	5.1% (2.3 m)
11	1057 st.	6.7% (3.0 m)
12	161 st.	1.2% (0.5 m)
13	165 st.	1.3% (0.6 m)
14	553 st.	3.9% (1.8 m)

Upper thread 45.1 m  
Bobbin 15.0 m

File: Bee-with-jar-of-honey-44.jef (Janome)  
Stitches: 10553  
Size: 66.8 x 89.2 mm (2.63 x 3.51 ")  
Begin: 33.5, 44.6 mm  
End: 3.8, 21.6 mm  
Start needle: 1  
Colors: 9/14 , Stops: 13  
Date: 13-09-23



Histogram

Stitches ratio diagram:



- ( 456 ) Stop 1
- ( 3571 ) Stop 2
- ( 4060 ) Stop 3
- ( 4451 ) Stop 4
- ( 4912 ) Stop 5
- ( 5044 ) Stop 6
- ( 6679 ) Stop 7
- ( 7818 ) Stop 8
- ( 7986 ) Stop 9
- ( 8618 ) Stop 10
- ( 9675 ) Stop 11
- ( 9836 ) Stop 12
- ( 10001 ) Stop 13
- ( 10553 ) End

