

Needle Thread consumption

1	9560 st.	62.1% (53.0 m)
2	4065 st.	25.5% (21.8 m)
3	754 st.	4.1% (3.5 m)
4	1163 st.	7.1% (6.1 m)
5	227 st.	1.2% (1.0 m)

Upper thread	85.3 m
Bobbin	28.4 m

File: Colorful S...Inch (Babylock, Bernina, Brother #PES0001)

Stitches: 15769

Size: 106.7 x 139.6 mm (4.20 x 5.50 ")

Begin: 53.3, 69.8 mm

End: 22.5, 49.5 mm

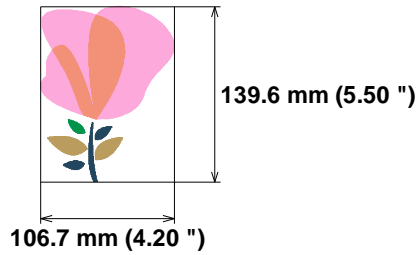
Start needle: 1

Colors: 5/5 , Stops: 4

Date: 16-09-23

This area is reserved for
your logo. Place logo.bmp
file (width: 721 , height: 237 pixels)
in the same folder as
embird.exe file.

This area is reserved for
your address information.
Place address.txt text file
containing your address in the
same folder as embird.exe
file.



Histogram

Stitches ratio diagram:

(9561) Stop 1
(13626) Stop 2
(14380) Stop 3
(15543) Stop 4
(15769) End



Needle Thread consumption

1	8057 st.	62.2% (44.1 m)
2	3432 st.	25.5% (18.1 m)
3	651 st.	4.1% (2.9 m)
4	1007 st.	7.1% (5.0 m)
5	193 st.	1.2% (0.8 m)

Upper thread	71.0 m
Bobbin	23.7 m

File: Colorful S...Inch (Babylock, Bernina, Brother #PES0020)

Stitches: 13340

Size: 96.9 x 126.9 mm (3.81 x 5.00 ")

Begin: 48.4, 63.4 mm

End: 20.5, 44.9 mm

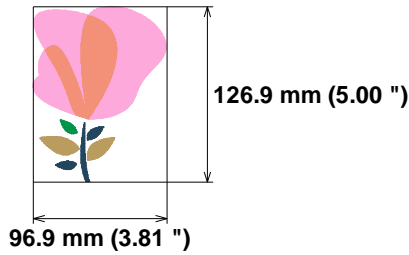
Start needle: 1

Colors: 5/5 , Stops: 4

Date: 16-09-23

This area is reserved for
your logo. Place logo.bmp
file (width: 721 , height: 237 pixels)
in the same folder as
embird.exe file.

This area is reserved for
your address information.
Place address.txt text file
containing your address in the
same folder as embird.exe
file.



Histogram

Stitches ratio diagram:

(8058) Stop 1
(11490) Stop 2
(12141) Stop 3
(13148) Stop 4
(13340) End



Needle Thread consumption

1	6719 st.	62.5% (36.1 m)
2	2835 st.	25.4% (14.7 m)
3	544 st.	3.8% (2.2 m)
4	836 st.	7.2% (4.2 m)
5	152 st.	1.0% (0.6 m)

Upper thread	57.8 m
Bobbin	19.3 m

File: Colorful S...Inch (Babylock, Bernina, Brother #PES0020)

Stitches: 11086

Size: 87.3 x 114.2 mm (3.44 x 4.50 ")

Begin: 43.6, 57.1 mm

End: 18.4, 40.5 mm

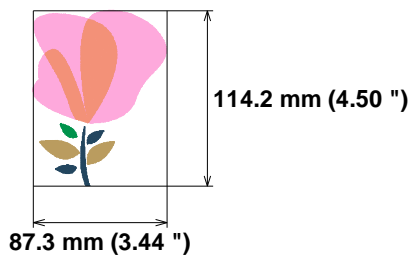
Start needle: 1

Colors: 5/5 , Stops: 4

Date: 16-09-23

This area is reserved for
your logo. Place logo.bmp
file (width: 721 , height: 237 pixels)
in the same folder as
embird.exe file.

This area is reserved for
your address information.
Place address.txt text file
containing your address in the
same folder as embird.exe
file.



Histogram

Stitches ratio diagram:



(6720)	Stop 1
(9555)	Stop 2
(10099)	Stop 3
(10935)	Stop 4
(11086)	End



Needle Thread consumption

1	5430 st.	62.5% (28.7 m)
2	2296 st.	25.4% (11.7 m)
3	474 st.	3.9% (1.8 m)
4	689 st.	7.1% (3.3 m)
5	128 st.	1.1% (0.5 m)

Upper thread	46.0 m
Bobbin	15.3 m

File: Colorful S...Inch (Babylock, Bernina, Brother #PES0020)

Stitches: 9017

Size: 77.6 x 101.5 mm (3.06 x 4.00 ")

Begin: 38.8, 50.7 mm

End: 16.4, 35.9 mm

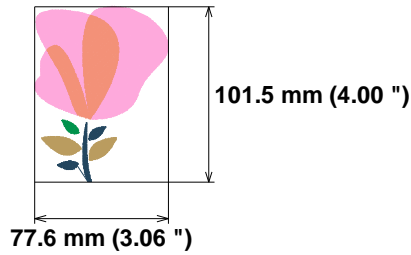
Start needle: 1

Colors: 5/5 , Stops: 4

Date: 16-09-23

This area is reserved for
your logo. Place logo.bmp
file (width: 721 , height: 237 pixels)
in the same folder as
embird.exe file.

This area is reserved for
your address information.
Place address.txt text file
containing your address in the
same folder as embird.exe
file.

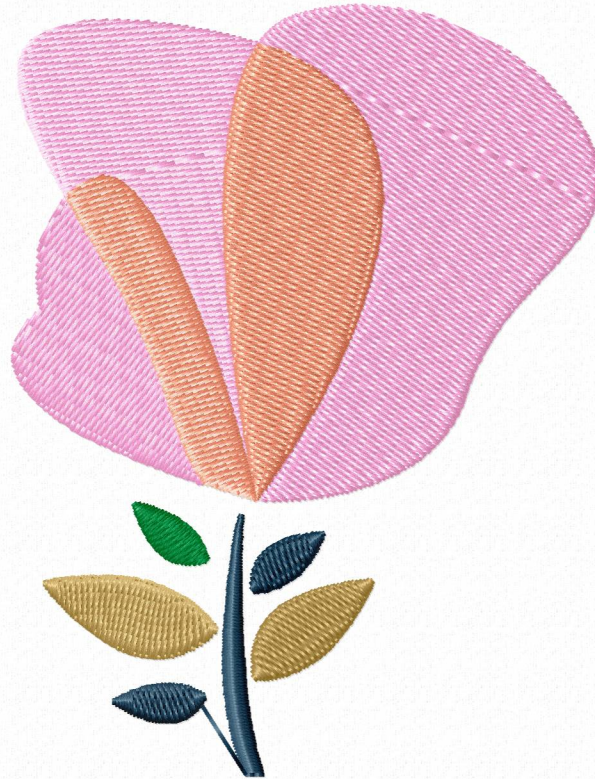


Histogram

Stitches ratio diagram:



(5431)	Stop 1
(7727)	Stop 2
(8201)	Stop 3
(8890)	Stop 4
(9017)	End



Needle Thread consumption

1	4297 st.	62.4% (22.2 m)
2	1820 st.	25.2% (9.0 m)
3	410 st.	4.0% (1.4 m)
4	564 st.	7.3% (2.6 m)
5	110 st.	1.1% (0.4 m)

Upper thread	35.7 m
Bobbin	11.9 m

File: Colorful S...Inch (Babylock, Bernina, Brother #PES0001)

Stitches: 7201

Size: 68.0 x 88.8 mm (2.68 x 3.50 ")

Begin: 34.0, 44.4 mm

End: 14.5, 31.4 mm

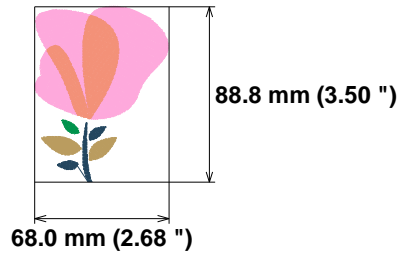
Start needle: 1

Colors: 5/5 , Stops: 4

Date: 16-09-23

This area is reserved for
your logo. Place logo.bmp
file (width: 721 , height: 237 pixels)
in the same folder as
embird.exe file.

This area is reserved for
your address information.
Place address.txt text file
containing your address in the
same folder as embird.exe
file.



Histogram

Stitches ratio diagram:



(4298)	Stop 1
(6118)	Stop 2
(6528)	Stop 3
(7092)	Stop 4
(7201)	End



Needle Thread consumption

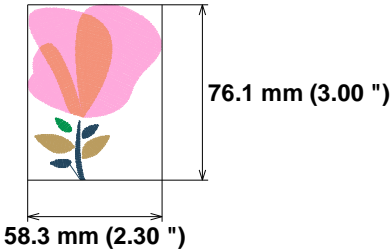
1	3285 st.	63.8% (16.6 m)
2	1253 st.	23.7% (6.1 m)
3	323 st.	4.1% (1.1 m)
4	435 st.	7.5% (1.9 m)
5	77 st.	1.0% (0.3 m)

Upper thread	25.9 m
Bobbin	8.6 m

File: Colorful S...Inch (Babylock, Bernina, Brother #PES0001)
Stitches: 5373
Size: 58.3 x 76.1 mm (2.30 x 3.00 ")
Begin: 29.1, 38.1 mm
End: 12.4, 26.9 mm
Start needle: 1
Colors: 5/5 , Stops: 4
Date: 16-09-23

This area is reserved for your logo. Place logo.bmp file (width: 721 , height: 237 pixels) in the same folder as embird.exe file.

This area is reserved for your address information. Place address.txt text file containing your address in the same folder as embird.exe file.

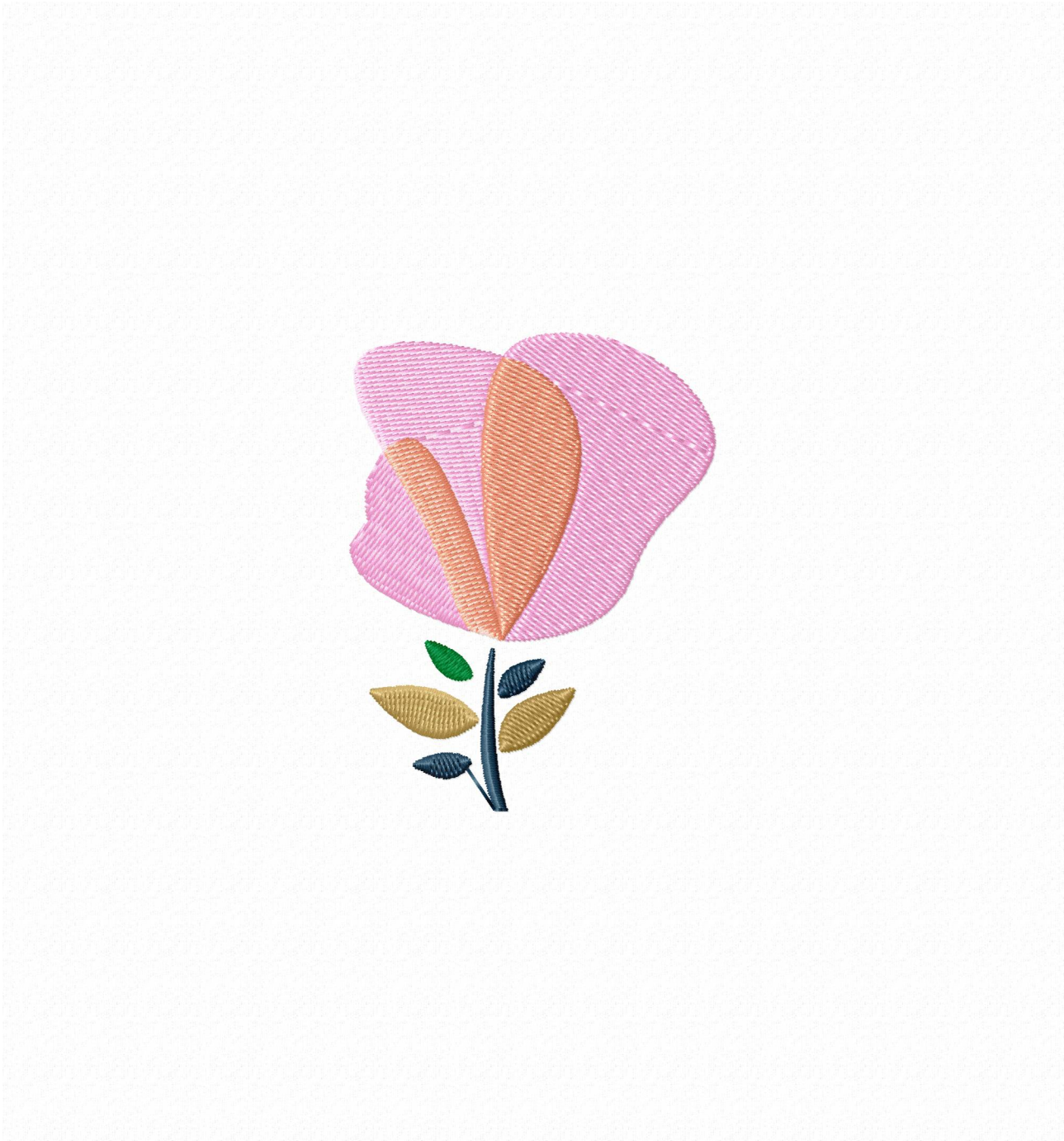


Histogram

Stitches ratio diagram:



(3286)	Stop 1
(4539)	Stop 2
(4862)	Stop 3
(5297)	Stop 4
(5373)	End



Needle Thread consumption

1	2391 st.	62.4% (11.7 m)
2	1030 st.	25.4% (4.7 m)
3	262 st.	4.1% (0.8 m)
4	321 st.	7.0% (1.3 m)
5	64 st.	1.1% (0.2 m)

Upper thread	18.7 m
Bobbin	6.2 m

File: Colorful S...Inch (Babylock, Bernina, Brother #PES0001)

Stitches: 4068

Size: 48.7 x 63.4 mm (1.92 x 2.50 ")

Begin: 24.3, 31.7 mm

End: 10.4, 22.4 mm

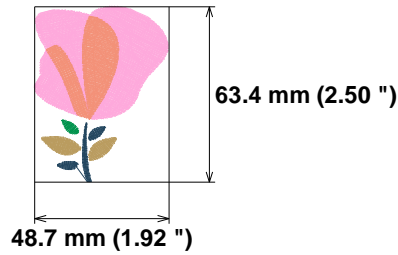
Start needle: 1

Colors: 5/5 , Stops: 4

Date: 16-09-23

This area is reserved for
your logo. Place logo.bmp
file (width: 721 , height: 237 pixels)
in the same folder as
embird.exe file.

This area is reserved for
your address information.
Place address.txt text file
containing your address in the
same folder as embird.exe
file.



Histogram

Stitches ratio diagram:



(2392)	Stop 1
(3422)	Stop 2
(3684)	Stop 3
(4005)	Stop 4
(4068)	End



Needle Thread consumption

1	8077 st.	38.4% (42.2 m)
2	7197 st.	33.8% (37.2 m)
3	3123 st.	17.4% (19.1 m)
4	612 st.	2.9% (3.2 m)
5	1020 st.	4.7% (5.2 m)
6	596 st.	2.7% (3.0 m)

Upper thread 110.0 m
Bobbin 36.7 m

File: Colorful S...Inch (Babylock, Bernina, Brother #PES0040)

Stitches: 20625

Size: 139.6 x 136.7 mm (5.50 x 5.38 ")

Begin: 69.8, 68.3 mm

End: 67.2, 17.4 mm

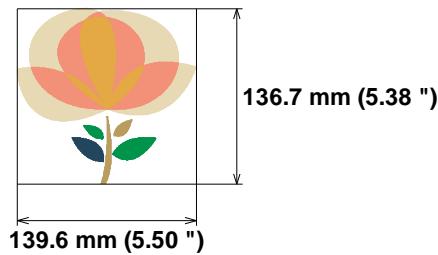
Start needle: 1

Colors: 6/6 , Stops: 5

Date: 16-09-23

This area is reserved for
your logo. Place logo.bmp
file (width: 721 , height: 237 pixels)
in the same folder as
embird.exe file.

This area is reserved for
your address information.
Place address.txt text file
containing your address in the
same folder as embird.exe
file.



Histogram

(8078) Stop 1
(15275) Stop 2
(18398) Stop 3
(19010) Stop 4
(20030) Stop 5
(20625) End

Comments:

Settings:

Stitches ratio diagram:



Needle Thread consumption

1	6867 st.	38.4% (35.2 m)
2	6136 st.	33.9% (31.1 m)
3	2657 st.	17.4% (15.9 m)
4	543 st.	3.0% (2.7 m)
5	856 st.	4.7% (4.3 m)
6	492 st.	2.7% (2.4 m)

Upper thread 91.6 m
Bobbin 30.5 m

File: Colorful S...Inch (Babylock, Bernina, Brother #PES0020)

Stitches: 17551

Size: 127.0 x 124.1 mm (5.00 x 4.89 ")

Begin: 63.5, 62.0 mm

End: 61.1, 15.8 mm

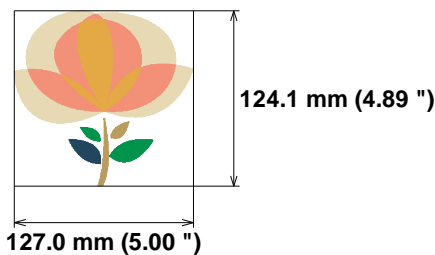
Start needle: 1

Colors: 6/6 , Stops: 5

Date: 16-09-23

This area is reserved for
your logo. Place logo.bmp
file (width: 721 , height: 237 pixels)
in the same folder as
embird.exe file.

This area is reserved for
your address information.
Place address.txt text file
containing your address in the
same folder as embird.exe
file.



Histogram

Stitches ratio diagram:



(6868) Stop 1
(13004) Stop 2
(15661) Stop 3
(16204) Stop 4
(17060) Stop 5
(17551) End



Needle Thread consumption

1	5741 st.	38.5% (28.9 m)
2	5106 st.	33.9% (25.4 m)
3	2231 st.	17.2% (12.9 m)
4	476 st.	3.0% (2.2 m)
5	713 st.	4.7% (3.5 m)
6	414 st.	2.6% (2.0 m)

Upper thread 75.0 m
Bobbin 25.0 m

File: Colorful S...Inch (Babylock, Bernina, Brother #PES0020)

Stitches: 14681

Size: 114.3 x 111.9 mm (4.50 x 4.41 ")

Begin: 57.1, 55.9 mm

End: 55.0, 14.2 mm

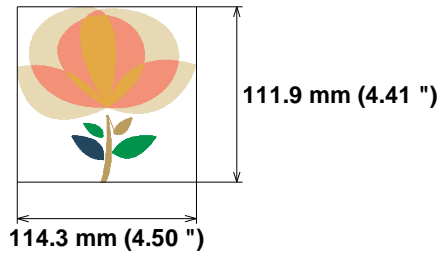
Start needle: 1

Colors: 6/6 , Stops: 5

Date: 16-09-23

This area is reserved for your logo. Place logo.bmp file (width: 721 , height: 237 pixels) in the same folder as embird.exe file.

This area is reserved for your address information. Place address.txt text file containing your address in the same folder as embird.exe file.

**Histogram**

Stitches ratio diagram:



(5742) Stop 1
(10848) Stop 2
(13079) Stop 3
(13555) Stop 4
(14268) Stop 5
(14681) End



Needle Thread consumption

1	4686 st.	38.6% (23.0 m)
2	4165 st.	34.0% (20.3 m)
3	1839 st.	17.2% (10.3 m)
4	394 st.	2.9% (1.7 m)
5	586 st.	4.6% (2.8 m)
6	345 st.	2.7% (1.6 m)

Upper thread 59.7 m
Bobbin 19.9 m

File: Colorful S...Inch (Babylock, Bernina, Brother #PES0020)

Stitches: 12015

Size: 101.6 x 99.5 mm (4.00 x 3.92 ")

Begin: 50.8, 49.7 mm

End: 48.8, 12.6 mm

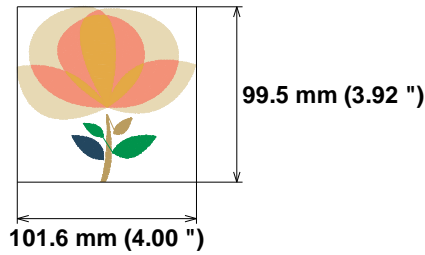
Start needle: 1

Colors: 6/6 , Stops: 5

Date: 16-09-23

This area is reserved for
your logo. Place logo.bmp
file (width: 721 , height: 237 pixels)
in the same folder as
embird.exe file.

This area is reserved for
your address information.
Place address.txt text file
containing your address in the
same folder as embird.exe
file.



Histogram

Stitches ratio diagram:



(4687) Stop 1
(8852) Stop 2
(10691) Stop 3
(11085) Stop 4
(11671) Stop 5
(12015) End



Needle Thread consumption

1	3663 st.	38.2% (17.6 m)
2	3321 st.	34.1% (15.7 m)
3	1477 st.	17.4% (8.0 m)
4	347 st.	3.0% (1.4 m)
5	477 st.	4.6% (2.1 m)
6	282 st.	2.7% (1.2 m)

Upper thread	46.1 m
Bobbin	15.4 m

File: Colorful S...Inch (Babylock, Bernina, Brother #PES0001)

Stitches: 9567

Size: 88.9 x 87.1 mm (3.50 x 3.43 ")

Begin: 44.4, 43.6 mm

End: 42.7, 11.0 mm

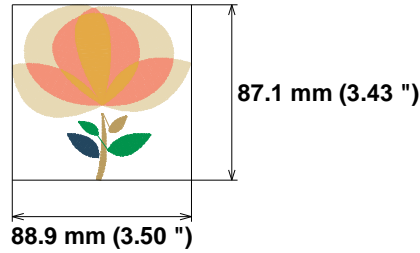
Start needle: 1

Colors: 6/6 , Stops: 5

Date: 16-09-23

This area is reserved for
your logo. Place logo.bmp
file (width: 721 , height: 237 pixels)
in the same folder as
embird.exe file.

This area is reserved for
your address information.
Place address.txt text file
containing your address in the
same folder as embird.exe
file.



Histogram

Stitches ratio diagram:



(3664) Stop 1
(6985) Stop 2
(8462) Stop 3
(8809) Stop 4
(9286) Stop 5
(9567) End



Needle Thread consumption

1	2867 st.	38.6% (13.3 m)
2	2574 st.	34.2% (11.8 m)
3	1136 st.	16.8% (5.8 m)
4	284 st.	3.0% (1.0 m)
5	371 st.	4.6% (1.6 m)
6	220 st.	2.7% (0.9 m)

Upper thread	34.4 m
Bobbin	11.5 m

File: Colorful S...Inch (Babylock, Bernina, Brother #PES0001)

Stitches: 7452

Size: 76.1 x 74.6 mm (3.00 x 2.94 ")

Begin: 38.0, 37.3 mm

End: 36.5, 9.4 mm

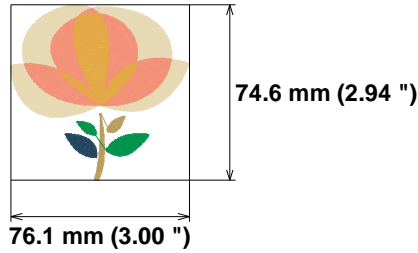
Start needle: 1

Colors: 6/6 , Stops: 5

Date: 16-09-23

This area is reserved for
your logo. Place logo.bmp
file (width: 721 , height: 237 pixels)
in the same folder as
embird.exe file.

This area is reserved for
your address information.
Place address.txt text file
containing your address in the
same folder as embird.exe
file.



Histogram

Stitches ratio diagram:



(2868) Stop 1
(5442) Stop 2
(6578) Stop 3
(6862) Stop 4
(7233) Stop 5
(7452) End



Needle Thread consumption

1	2066 st.	38.3% (9.2 m)
2	1917 st.	34.5% (8.3 m)
3	855 st.	17.0% (4.1 m)
4	229 st.	3.1% (0.8 m)
5	269 st.	4.6% (1.1 m)
6	152 st.	2.4% (0.6 m)

Upper thread	24.0 m
Bobbin	8.0 m

File: Colorful S...Inch (Babylock, Bernina, Brother #PES0001)

Stitches: 5488

Size: 63.4 x 62.1 mm (2.50 x 2.44 ")

Begin: 31.7, 31.1 mm

End: 30.4, 7.8 mm

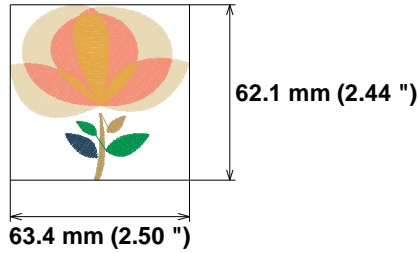
Start needle: 1

Colors: 6/6 , Stops: 5

Date: 16-09-23

This area is reserved for
your logo. Place logo.bmp
file (width: 721 , height: 237 pixels)
in the same folder as
embird.exe file.

This area is reserved for
your address information.
Place address.txt text file
containing your address in the
same folder as embird.exe
file.



Histogram

Stitches ratio diagram:



(2067) Stop 1
(3984) Stop 2
(4839) Stop 3
(5068) Stop 4
(5337) Stop 5
(5488) End



Needle Thread consumption

1	7088 st.	44.9% (38.6 m)
2	3449 st.	19.3% (16.6 m)
3	3032 st.	17.8% (15.3 m)
4	387 st.	3.2% (2.8 m)
5	352 st.	2.1% (1.8 m)
6	2181 st.	12.7% (10.9 m)

Upper thread	86.0 m
Bobbin	28.7 m

File: Colorful S...Inch (Babylock, Bernina, Brother #PES0001)

Stitches: 16489

Size: 119.0 x 139.7 mm (4.69 x 5.50 ")

Begin: 59.5, 69.9 mm

End: 67.2, 19.1 mm

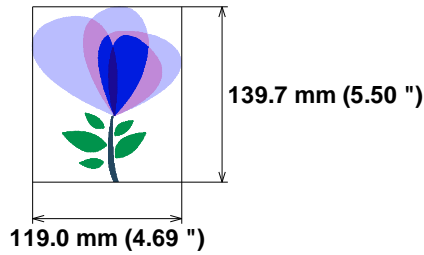
Start needle: 1

Colors: 6/6 , Stops: 5

Date: 16-09-23

This area is reserved for
your logo. Place logo.bmp
file (width: 721 , height: 237 pixels)
in the same folder as
embird.exe file.

This area is reserved for
your address information.
Place address.txt text file
containing your address in the
same folder as embird.exe
file.

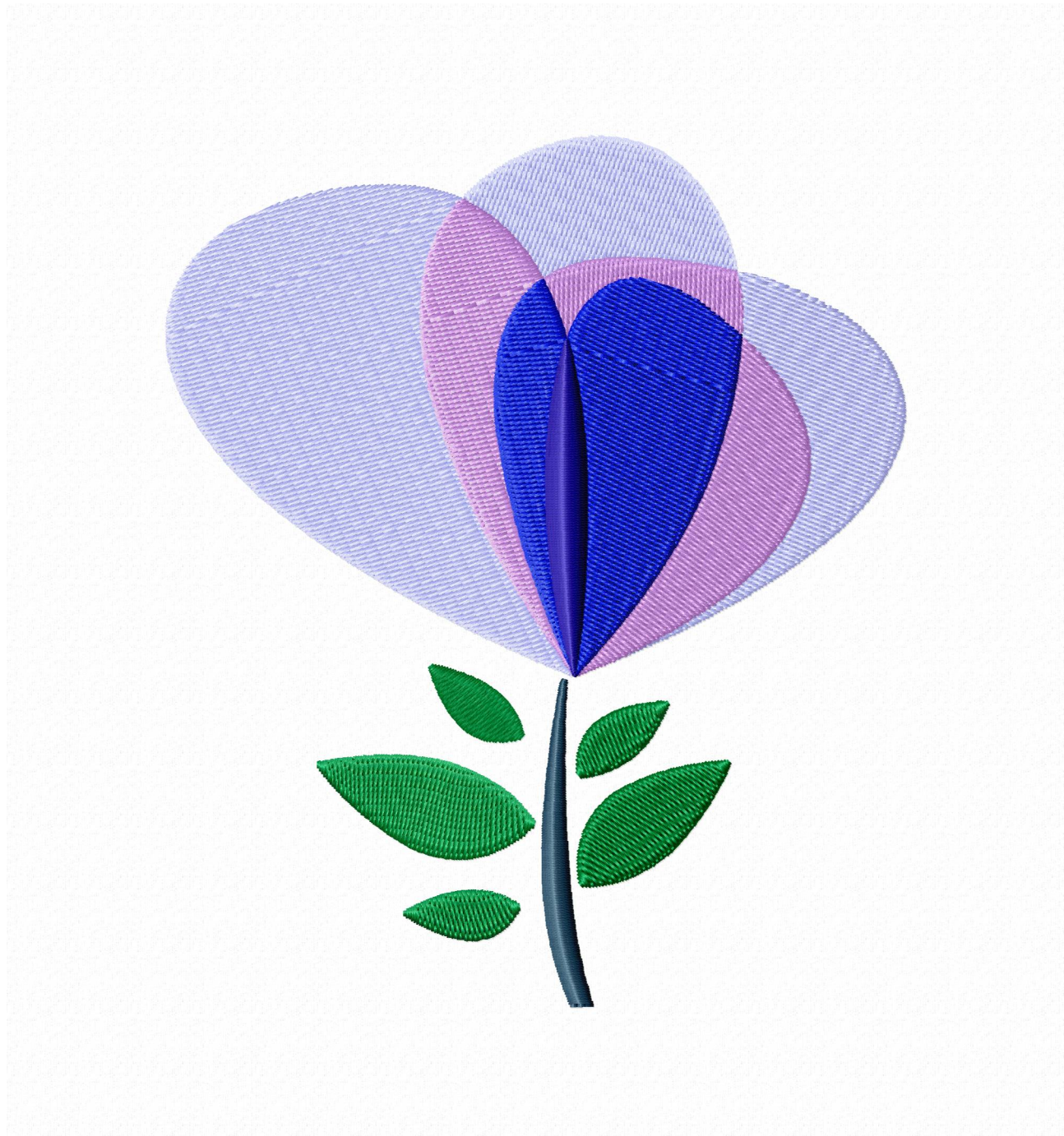


Histogram

Stitches ratio diagram:



(7089)	Stop 1
(10538)	Stop 2
(13570)	Stop 3
(13957)	Stop 4
(14309)	Stop 5
(16489)	End



Needle Thread consumption

1	5959 st.	44.9% (32.1 m)
2	2948 st.	19.4% (13.8 m)
3	2561 st.	17.8% (12.7 m)
4	355 st.	3.2% (2.3 m)
5	321 st.	2.1% (1.5 m)
6	1845 st.	12.7% (9.1 m)

Upper thread 71.5 m
Bobbin 23.8 m

File: Colorful S...Inch (Babylock, Bernina, Brother #PES0020)

Stitches: 13989

Size: 108.1 x 126.9 mm (4.26 x 5.00 ")

Begin: 54.0, 63.4 mm

End: 61.2, 17.3 mm

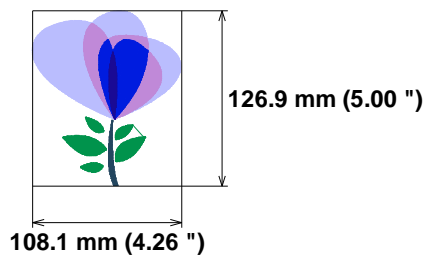
Start needle: 1

Colors: 6/6 , Stops: 5

Date: 16-09-23

This area is reserved for your logo. Place logo.bmp file (width: 721 , height: 237 pixels) in the same folder as embird.exe file.

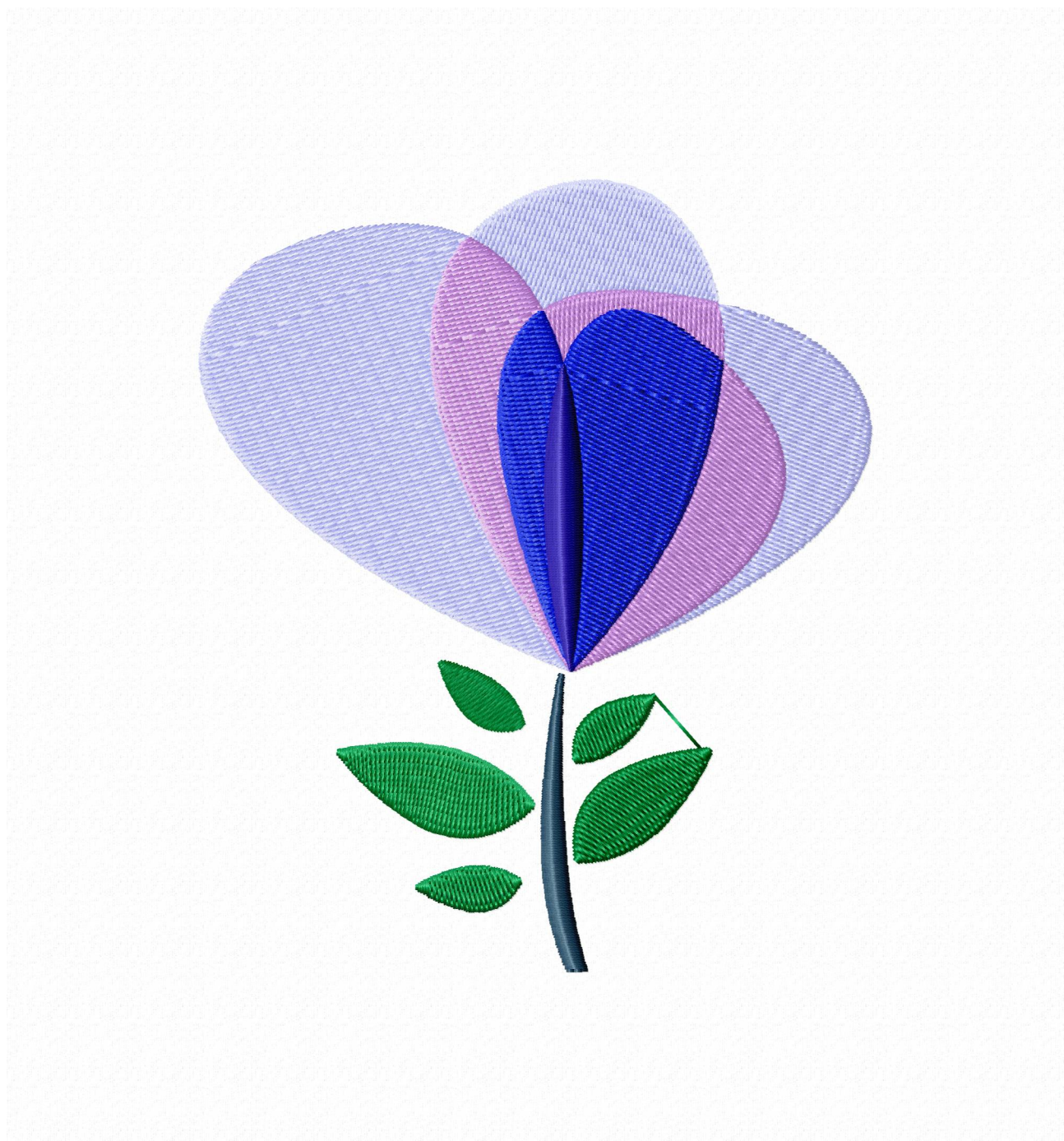
This area is reserved for your address information. Place address.txt text file containing your address in the same folder as embird.exe file.

**Histogram**

Stitches ratio diagram:



(5960) Stop 1
(8908) Stop 2
(11469) Stop 3
(11824) Stop 4
(12145) Stop 5
(13989) End



Needle Thread consumption

1	4977 st.	45.0% (26.3 m)
2	2468 st.	19.5% (11.4 m)
3	2158 st.	17.9% (10.5 m)
4	279 st.	2.8% (1.6 m)
5	276 st.	2.1% (1.2 m)
6	1575 st.	12.7% (7.4 m)

Upper thread 58.4 m
Bobbin 19.5 m

File: Colorful S...Inch (Babylock, Bernina, Brother #PES0020)

Stitches: 11733

Size: 97.6 x 114.3 mm (3.84 x 4.50 ")

Begin: 48.8, 57.1 mm

End: 55.3, 15.6 mm

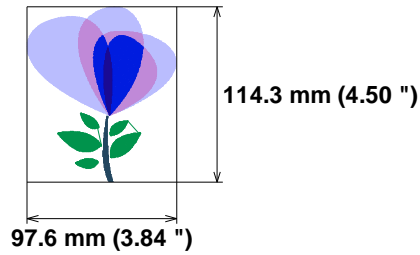
Start needle: 1

Colors: 6/6 , Stops: 5

Date: 16-09-23

This area is reserved for
your logo. Place logo.bmp
file (width: 721 , height: 237 pixels)
in the same folder as
embird.exe file.

This area is reserved for
your address information.
Place address.txt text file
containing your address in the
same folder as embird.exe
file.

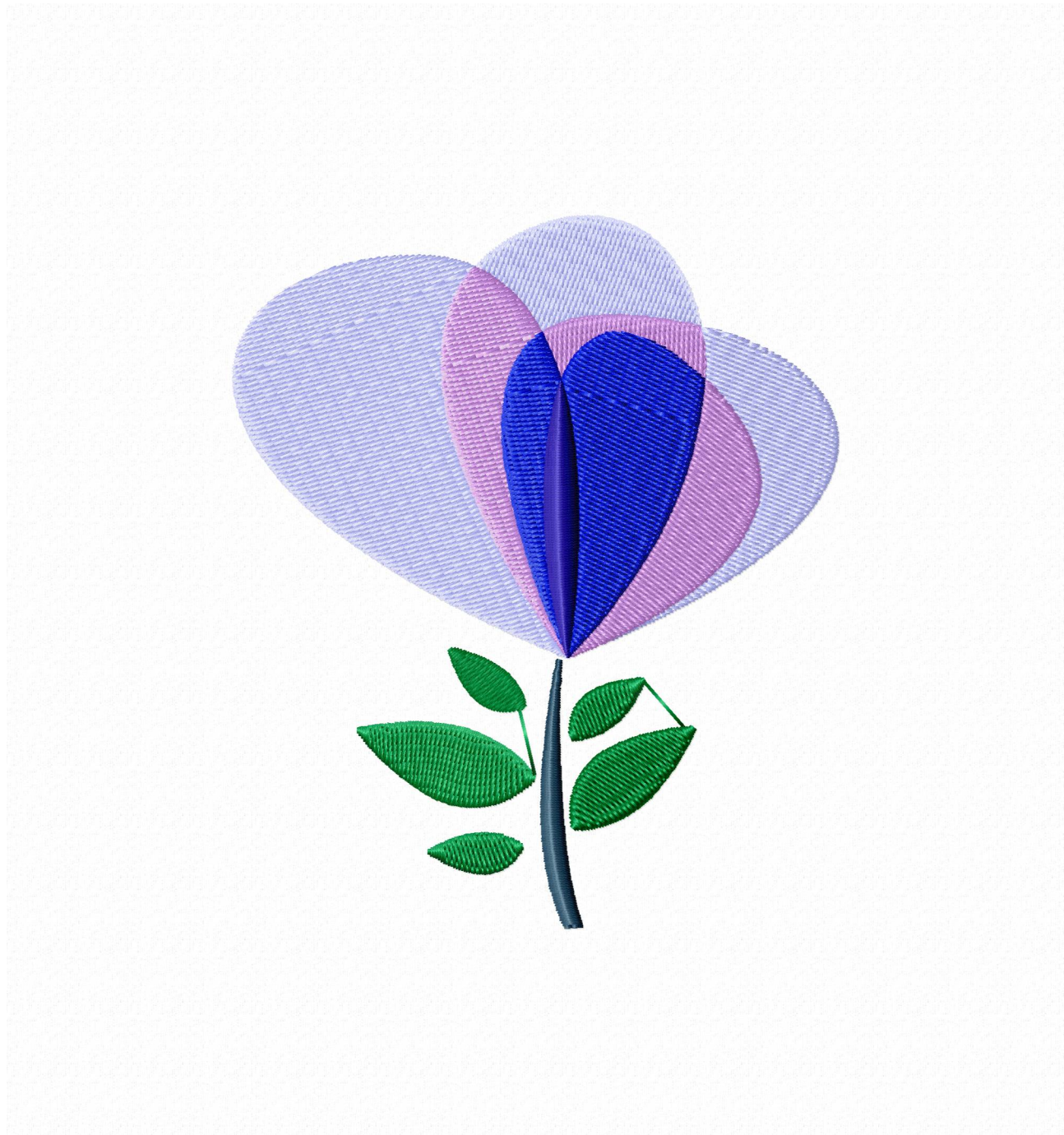


Histogram

Stitches ratio diagram:



(4978) Stop 1
(7446) Stop 2
(9604) Stop 3
(9883) Stop 4
(10159) Stop 5
(11733) End



Needle Thread consumption

1	3999 st.	45.3% (20.8 m)
2	2008 st.	19.4% (8.9 m)
3	1737 st.	17.9% (8.2 m)
4	256 st.	2.8% (1.3 m)
5	247 st.	2.1% (1.0 m)
6	1255 st.	12.4% (5.7 m)

Upper thread	46.0 m
Bobbin	15.3 m

File: Colorful S...Inch (Babylock, Bernina, Brother #PES0020)

Stitches: 9502

Size: 86.6 x 101.5 mm (3.41 x 4.00 ")

Begin: 43.3, 50.7 mm

End: 49.1, 13.8 mm

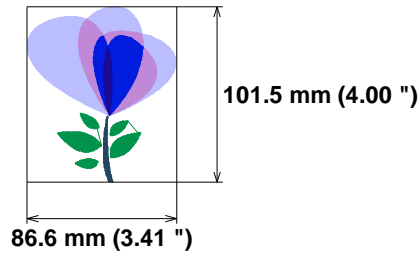
Start needle: 1

Colors: 6/6 , Stops: 5

Date: 16-09-23

This area is reserved for
your logo. Place logo.bmp
file (width: 721 , height: 237 pixels)
in the same folder as
embird.exe file.

This area is reserved for
your address information.
Place address.txt text file
containing your address in the
same folder as embird.exe
file.

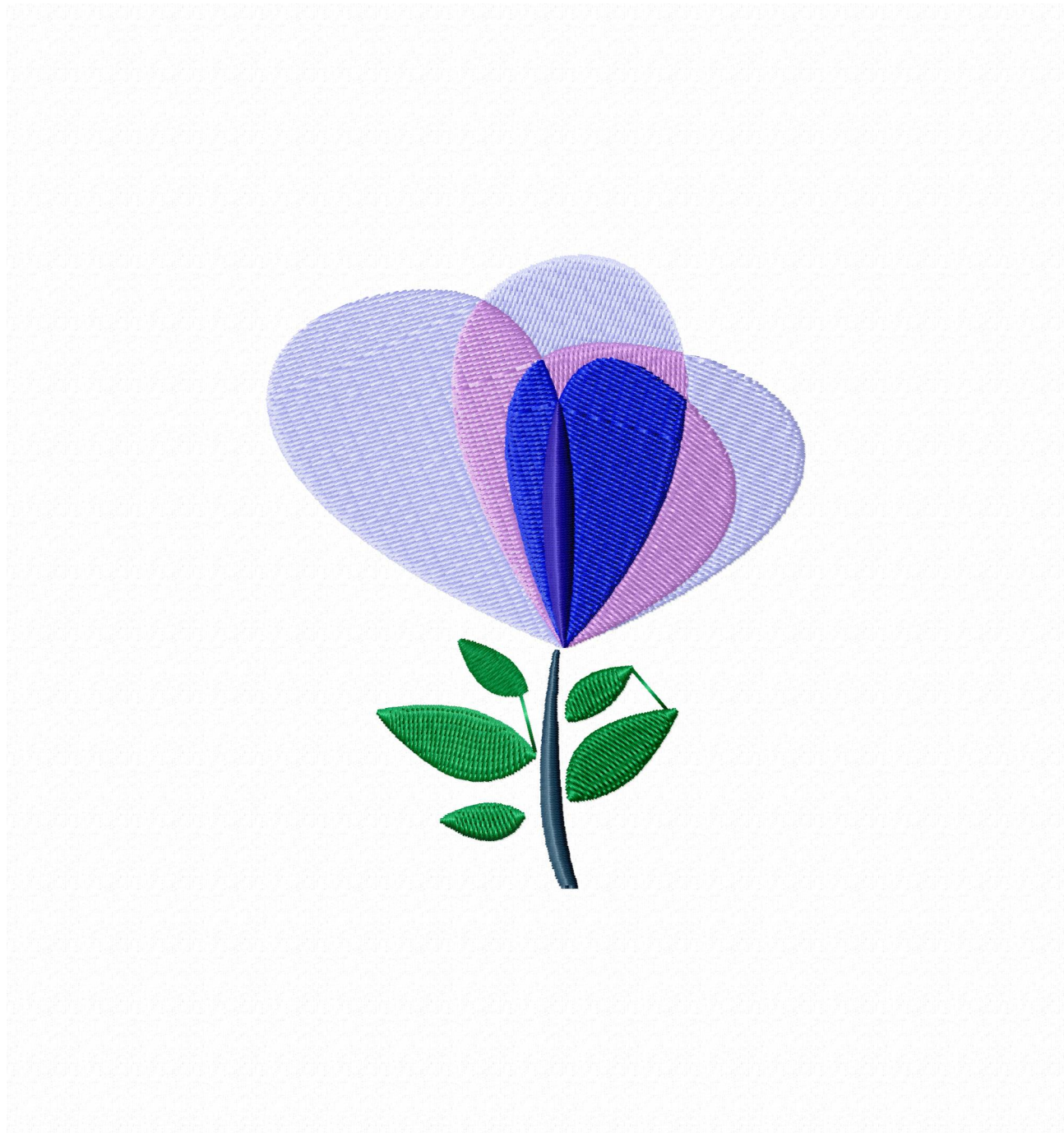


Histogram

Stitches ratio diagram:



(4000)	Stop 1
(6008)	Stop 2
(7745)	Stop 3
(8001)	Stop 4
(8248)	Stop 5
(9502)	End

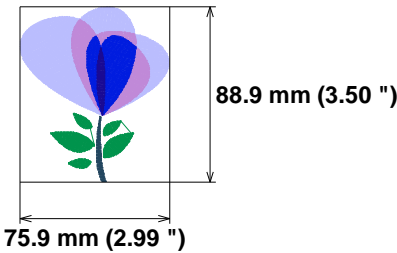


Needle	Thread consumption	
1	3200 st.	45.3% (16.2 m)
2	1612 st.	19.5% (7.0 m)
3	1410 st.	17.9% (6.4 m)
4	230 st.	2.9% (1.0 m)
5	214 st.	2.2% (0.8 m)
6	1019 st.	12.3% (4.4 m)
Upper thread		35.8 m
Bobbin		11.9 m

File: Colorful S...Inch (Babylock, Bernina, Brother #PES0001)
Stitches: 7685
Size: 75.9 x 88.9 mm (2.99 x 3.50 ")
Begin: 37.9, 44.5 mm
End: 43.0, 12.1 mm
Start needle: 1
Colors: 6/6 , Stops: 5
Date: 16-09-23

This area is reserved for
your logo. Place logo.bmp
file (width: 721 , height: 237 pixels)
in the same folder as
embird.exe file.

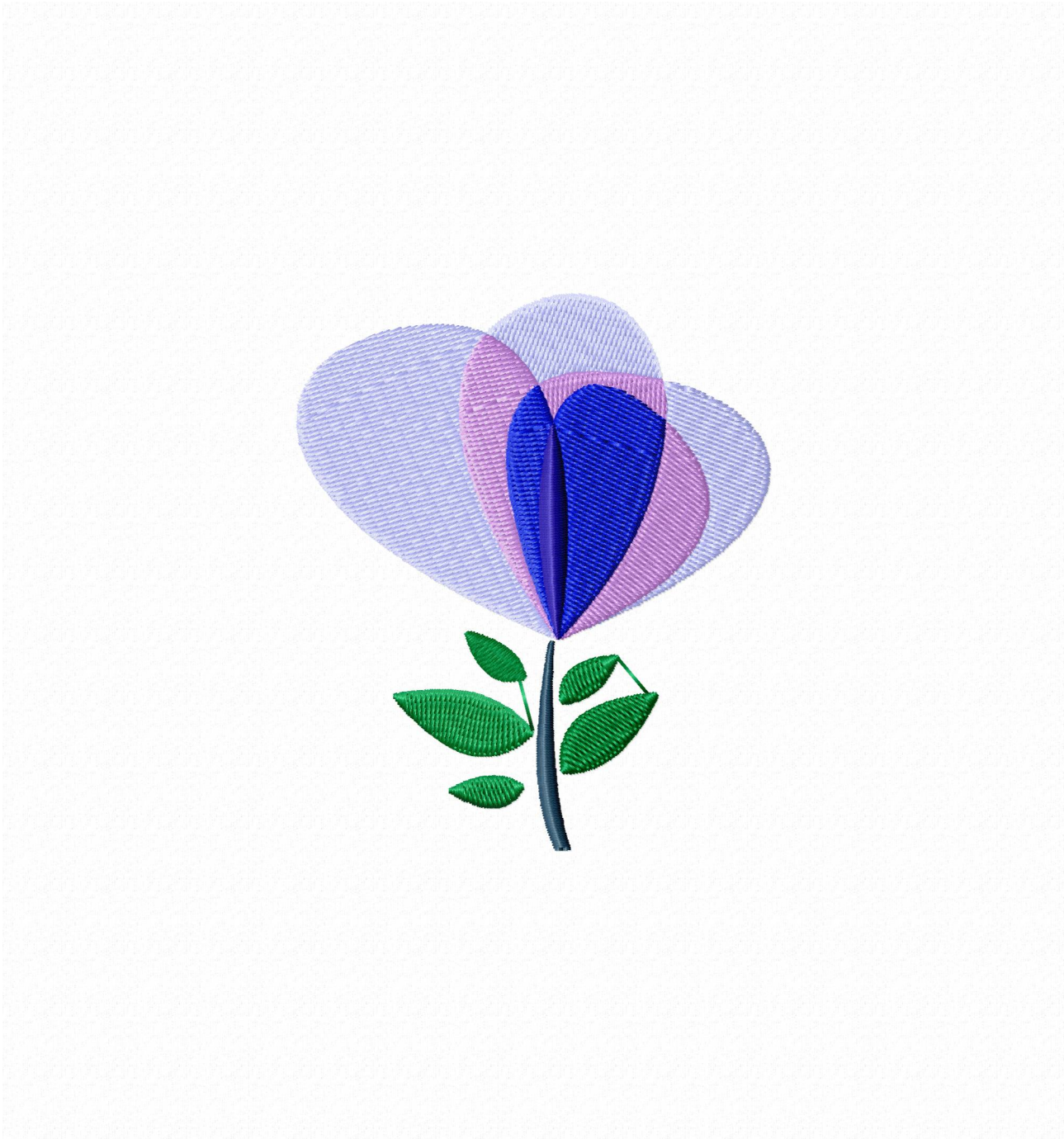
This area is reserved for
your address information.
Place address.txt text file
containing your address in the
same folder as embird.exe
file.



Histogram

(3201)	Stop 1
(4813)	Stop 2
(6223)	Stop 3
(6453)	Stop 4
(6667)	Stop 5
(7685)	End

Stitches ratio diagram:



Needle Thread consumption

1	2482 st.	45.2% (12.1 m)
2	1297 st.	19.9% (5.4 m)
3	1062 st.	17.5% (4.7 m)
4	189 st.	2.9% (0.8 m)
5	186 st.	2.2% (0.6 m)
6	816 st.	12.3% (3.3 m)

Upper thread 26.9 m
Bobbin 9.0 m

File: Colorful S...Inch (Babylock, Bernina, Brother #PES0001)

Stitches: 6032

Size: 65.0 x 76.1 mm (2.56 x 3.00 ")

Begin: 32.5, 38.1 mm

End: 37.0, 10.3 mm

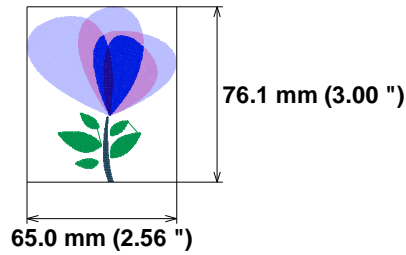
Start needle: 1

Colors: 6/6 , Stops: 5

Date: 16-09-23

This area is reserved for
your logo. Place logo.bmp
file (width: 721 , height: 237 pixels)
in the same folder as
embird.exe file.

This area is reserved for
your address information.
Place address.txt text file
containing your address in the
same folder as embird.exe
file.

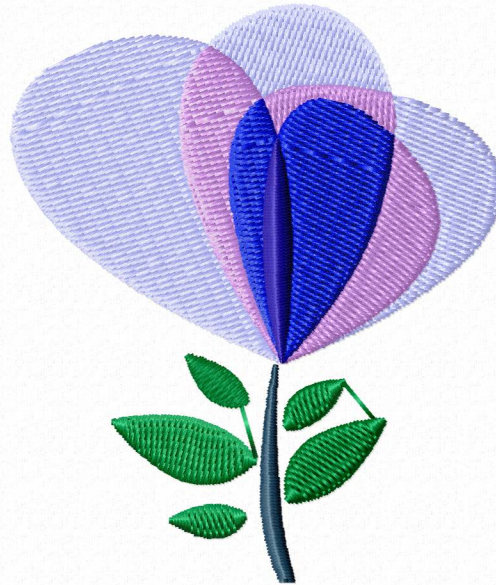


Histogram

Stitches ratio diagram:



(2483) Stop 1
(3780) Stop 2
(4842) Stop 3
(5031) Stop 4
(5217) Stop 5
(6032) End



Needle Thread consumption

1	1795 st.	45.1% (8.5 m)
2	924 st.	19.4% (3.7 m)
3	799 st.	18.0% (3.4 m)
4	157 st.	2.9% (0.5 m)
5	154 st.	2.3% (0.4 m)
6	596 st.	12.3% (2.3 m)

Upper thread 18.9 m
Bobbin 6.3 m

File: Colorful S...Inch (Babylock, Bernina, Brother #PES0001)

Stitches: 4425

Size: 54.3 x 63.5 mm (2.14 x 2.50 ")

Begin: 27.1, 31.8 mm

End: 30.8, 8.6 mm

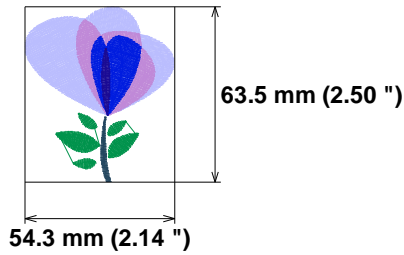
Start needle: 1

Colors: 6/6 , Stops: 5

Date: 16-09-23

This area is reserved for
your logo. Place logo.bmp
file (width: 721 , height: 237 pixels)
in the same folder as
embird.exe file.

This area is reserved for
your address information.
Place address.txt text file
containing your address in the
same folder as embird.exe
file.

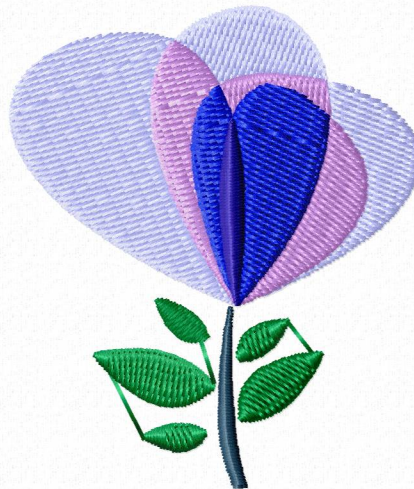


Histogram

Stitches ratio diagram:



(1796) Stop 1
(2720) Stop 2
(3519) Stop 3
(3676) Stop 4
(3830) Stop 5
(4425) End



Needle Thread consumption

1	8716 st.	60.7% (48.7 m)
2	3259 st.	20.8% (16.7 m)
3	376 st.	4.2% (3.3 m)
4	337 st.	2.4% (1.9 m)
5	1912 st.	12.0% (9.6 m)

Upper thread	80.3 m
Bobbin	26.8 m

File: Colorful S...Inch (Babylock, Bernina, Brother #PES0001)

Stitches: 14600

Size: 109.0 x 139.5 mm (4.29 x 5.49 ")

Begin: 54.5, 69.8 mm

End: 45.2, 47.2 mm

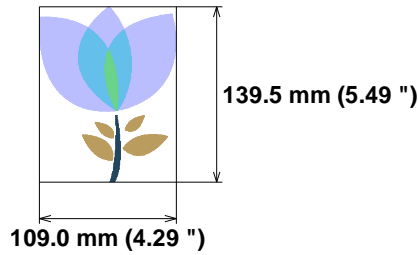
Start needle: 1

Colors: 5/5 , Stops: 4

Date: 16-09-23

This area is reserved for
your logo. Place logo.bmp
file (width: 721 , height: 237 pixels)
in the same folder as
embird.exe file.

This area is reserved for
your address information.
Place address.txt text file
containing your address in the
same folder as embird.exe
file.



Histogram

Stitches ratio diagram:



(8717) Stop 1
(11976) Stop 2
(12352) Stop 3
(12689) Stop 4
(14600) End



Needle Thread consumption

1	7369 st.	60.6% (40.6 m)
2	2774 st.	20.9% (14.0 m)
3	339 st.	4.2% (2.8 m)
4	315 st.	2.4% (1.6 m)
5	1625 st.	11.9% (8.0 m)

Upper thread	67.0 m
Bobbin	22.3 m

File: Colorful S...Inch (Babylock, Bernina, Brother #PES0020)

Stitches: 12422

Size: 99.0 x 126.7 mm (3.90 x 4.99 ")

Begin: 49.5, 63.3 mm

End: 41.0, 42.9 mm

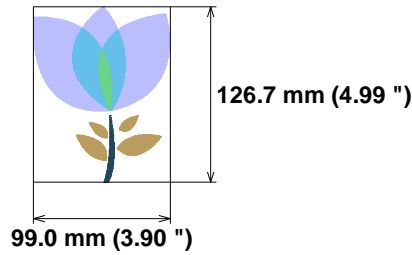
Start needle: 1

Colors: 5/5 , Stops: 4

Date: 16-09-23

This area is reserved for
your logo. Place logo.bmp
file (width: 721 , height: 237 pixels)
in the same folder as
embird.exe file.

This area is reserved for
your address information.
Place address.txt text file
containing your address in the
same folder as embird.exe
file.



Histogram

Stitches ratio diagram:



(7370)	Stop 1
(10144)	Stop 2
(10483)	Stop 3
(10798)	Stop 4
(12422)	End



Needle Thread consumption

1	6081 st.	60.4% (33.1 m)
2	2329 st.	21.0% (11.5 m)
3	298 st.	4.2% (2.3 m)
4	280 st.	2.4% (1.3 m)
5	1368 st.	12.0% (6.6 m)

Upper thread	54.8 m
Bobbin	18.3 m

File: Colorful S...Inch (Babylock, Bernina, Brother #PES0020)

Stitches: 10356

Size: 89.2 x 114.0 mm (3.51 x 4.49 ")

Begin: 44.6, 57.0 mm

End: 37.0, 38.5 mm

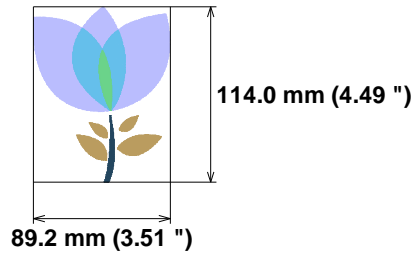
Start needle: 1

Colors: 5/5 , Stops: 4

Date: 16-09-23

This area is reserved for
your logo. Place logo.bmp
file (width: 721 , height: 237 pixels)
in the same folder as
embird.exe file.

This area is reserved for
your address information.
Place address.txt text file
containing your address in the
same folder as embird.exe
file.

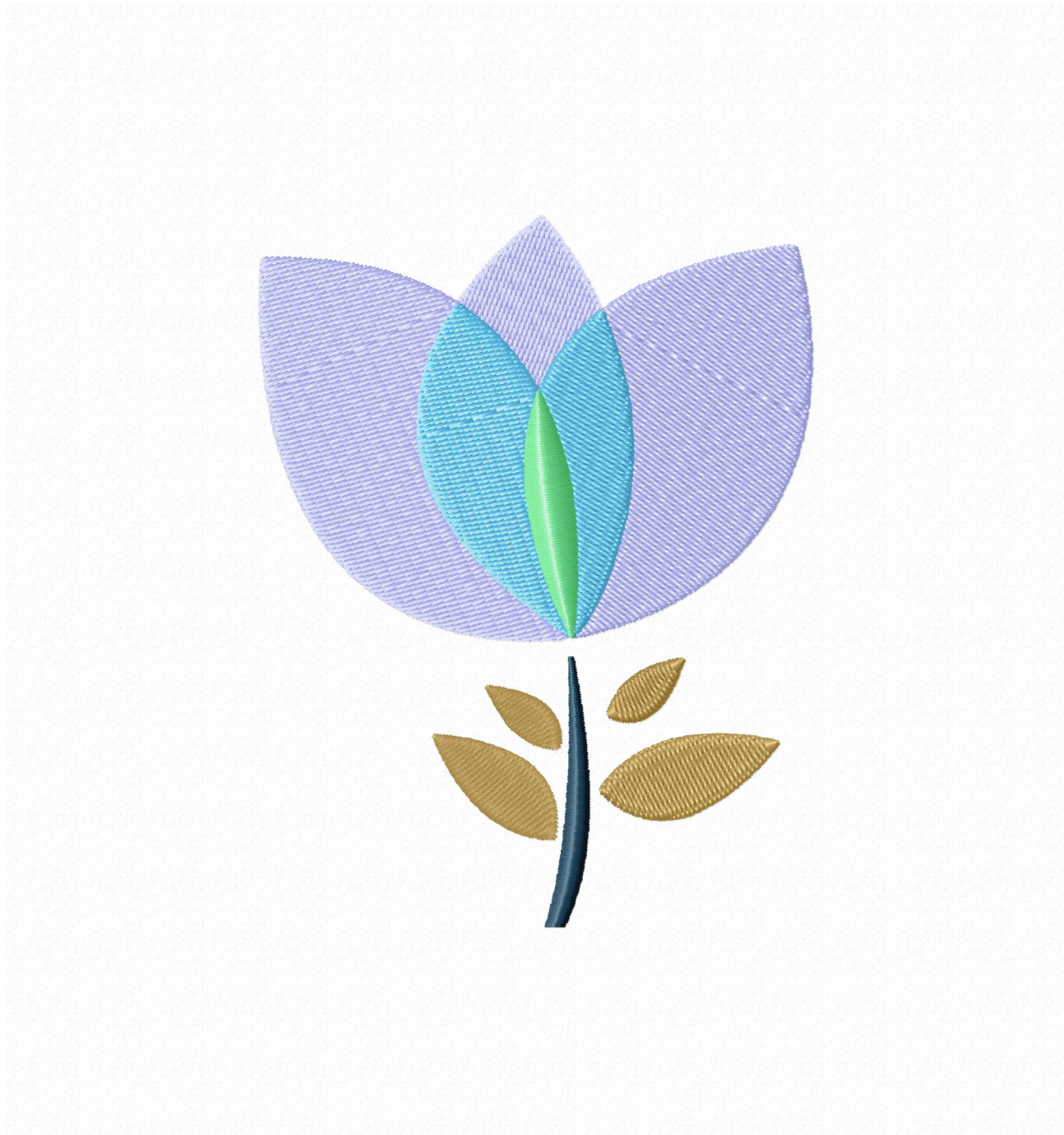


Histogram

Stitches ratio diagram:



(6082)	Stop 1
(8411)	Stop 2
(8709)	Stop 3
(8989)	Stop 4
(10356)	End



Needle Thread consumption

1	4919 st.	60.5% (26.3 m)
2	1904 st.	21.0% (9.1 m)
3	261 st.	4.2% (1.8 m)
4	248 st.	2.5% (1.1 m)
5	1090 st.	11.7% (5.1 m)

Upper thread	43.5 m
Bobbin	14.5 m

File: Colorful S...Inch (Babylock, Bernina, Brother #PES0020)

Stitches: 8422

Size: 79.2 x 101.4 mm (3.12 x 3.99 ")

Begin: 39.6, 50.7 mm

End: 32.8, 34.3 mm

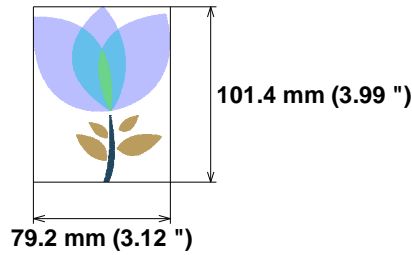
Start needle: 1

Colors: 5/5 , Stops: 4

Date: 16-09-23

This area is reserved for
your logo. Place logo.bmp
file (width: 721 , height: 237 pixels)
in the same folder as
embird.exe file.

This area is reserved for
your address information.
Place address.txt text file
containing your address in the
same folder as embird.exe
file.

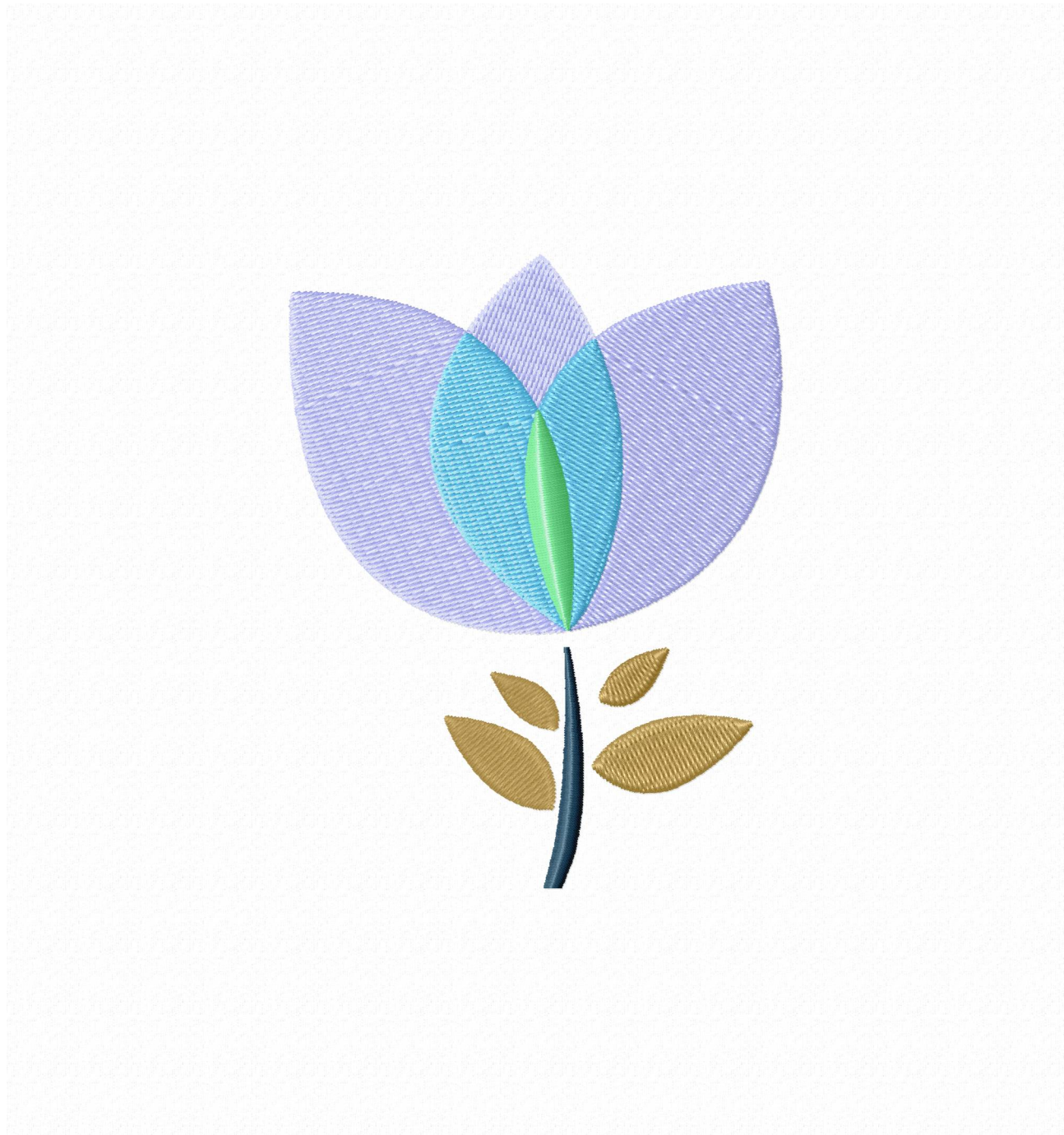


Histogram

Stitches ratio diagram:



(4920)	Stop 1
(6824)	Stop 2
(7085)	Stop 3
(7333)	Stop 4
(8422)	End



Needle Thread consumption

1	3928 st.	61.3% (20.5 m)
2	1478 st.	20.6% (6.9 m)
3	201 st.	3.7% (1.2 m)
4	218 st.	2.6% (0.9 m)
5	892 st.	11.8% (4.0 m)

Upper thread	33.5 m
Bobbin	11.2 m

File: Colorful S...Inch (Babylock, Bernina, Brother #PES0001)

Stitches: 6717

Size: 69.4 x 88.7 mm (2.73 x 3.49 ")

Begin: 34.7, 44.4 mm

End: 28.8, 29.9 mm

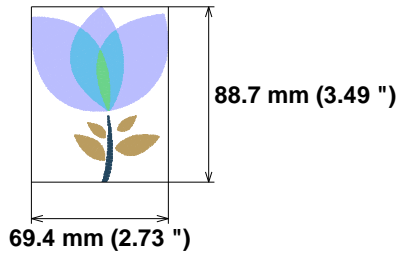
Start needle: 1

Colors: 5/5 , Stops: 4

Date: 16-09-23

This area is reserved for
your logo. Place logo.bmp
file (width: 721 , height: 237 pixels)
in the same folder as
embird.exe file.

This area is reserved for
your address information.
Place address.txt text file
containing your address in the
same folder as embird.exe
file.

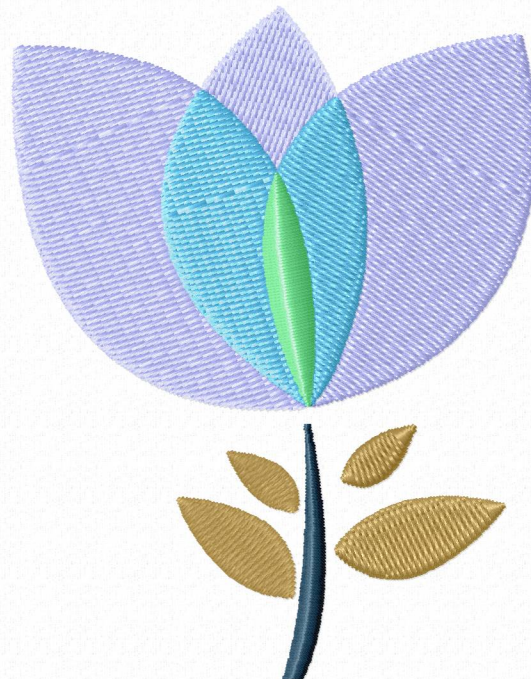


Histogram

Stitches ratio diagram:



(3929) Stop 1
(5407) Stop 2
(5608) Stop 3
(5826) Stop 4
(6717) End



Needle Thread consumption

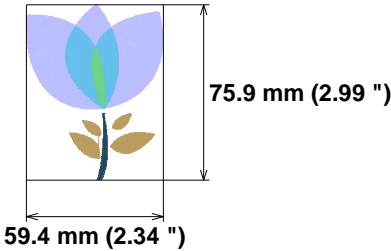
1	2730 st.	59.4% (14.2 m)
2	1154 st.	21.8% (5.2 m)
3	179 st.	3.9% (0.9 m)
4	185 st.	2.7% (0.7 m)
5	697 st.	12.3% (2.9 m)

Upper thread	24.0 m
Bobbin	8.0 m

File: Colorful S...Inch (Babylock, Bernina, Brother #PES0001)
Stitches: 4945
Size: 59.4 x 75.9 mm (2.34 x 2.99 ")
Begin: 29.7, 38.0 mm
End: 24.8, 25.7 mm
Start needle: 1
Colors: 5/5 , Stops: 4
Date: 16-09-23

This area is reserved for
your logo. Place logo.bmp
file (width: 721 , height: 237 pixels)
in the same folder as
embird.exe file.

This area is reserved for
your address information.
Place address.txt text file
containing your address in the
same folder as embird.exe
file.

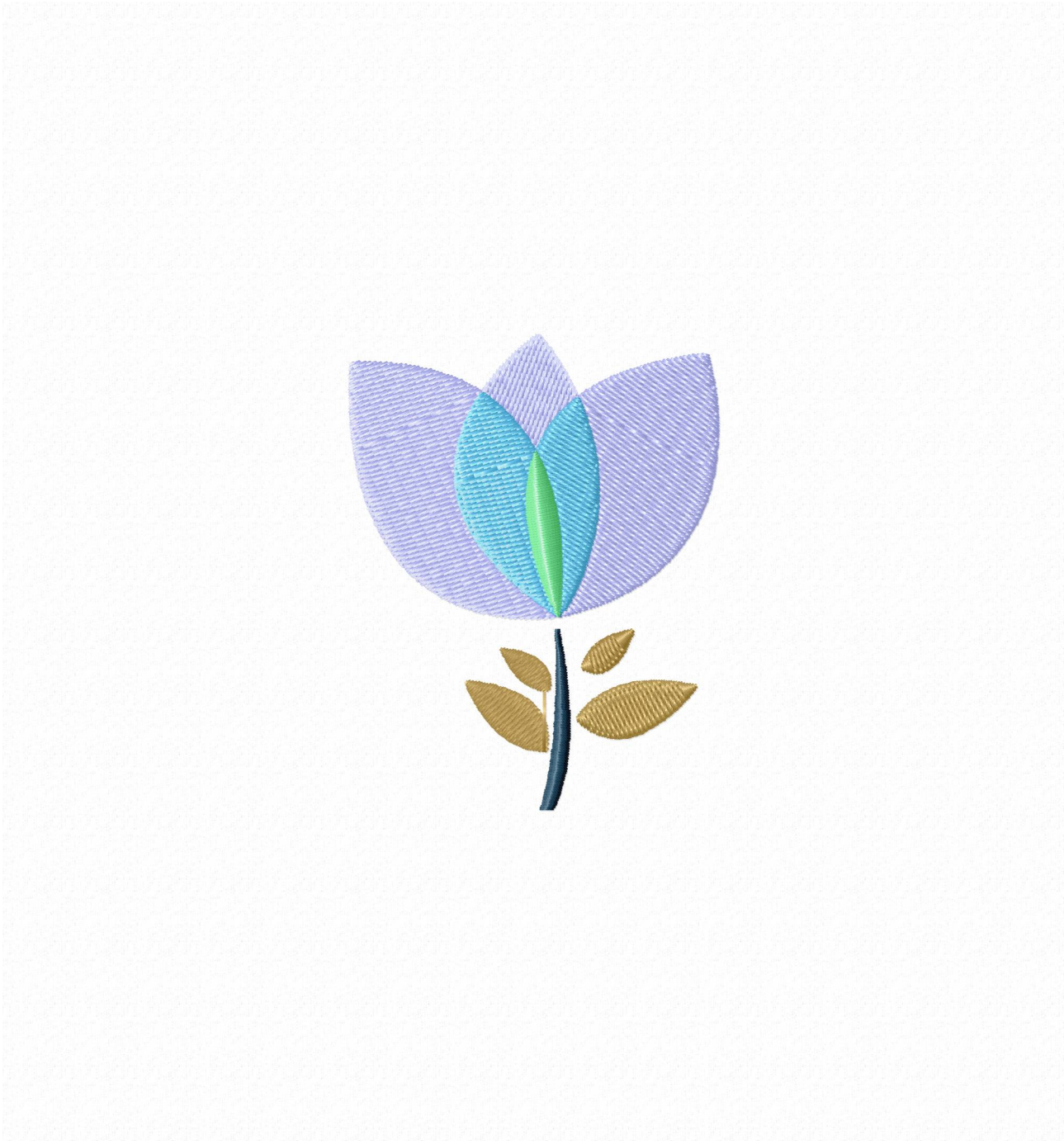


Histogram

Stitches ratio diagram:



- (2731) Stop 1
- (3885) Stop 2
- (4064) Stop 3
- (4249) Stop 4
- (4945) End



Needle Thread consumption

1	2156 st.	61.4% (10.7 m)
2	825 st.	20.5% (3.6 m)
3	156 st.	3.9% (0.7 m)
4	155 st.	2.7% (0.5 m)
5	501 st.	11.4% (2.0 m)

Upper thread	17.4 m
Bobbin	5.8 m

File: Colorful S...Inch (Babylock, Bernina, Brother #PES0001)

Stitches: 3793

Size: 49.5 x 63.2 mm (1.95 x 2.49 ")

Begin: 24.7, 31.6 mm

End: 20.7, 21.3 mm

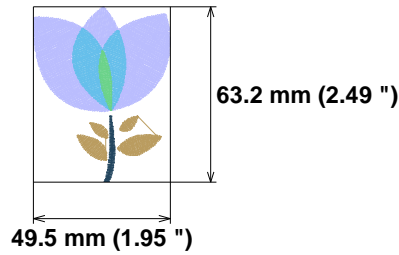
Start needle: 1

Colors: 5/5 , Stops: 4

Date: 16-09-23

This area is reserved for
your logo. Place logo.bmp
file (width: 721 , height: 237 pixels)
in the same folder as
embird.exe file.

This area is reserved for
your address information.
Place address.txt text file
containing your address in the
same folder as embird.exe
file.

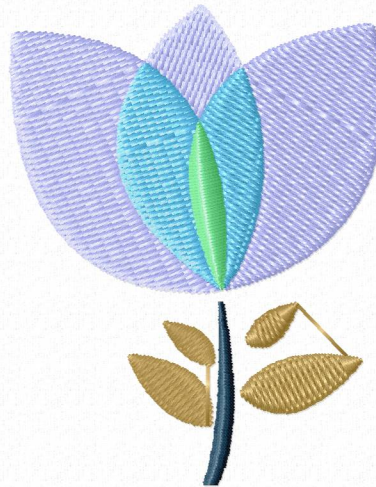


Histogram

Stitches ratio diagram:



(2157)	Stop 1
(2982)	Stop 2
(3138)	Stop 3
(3293)	Stop 4
(3793)	End



Needle Thread consumption

1	8971 st.	53.6% (49.0 m)
2	5143 st.	29.5% (27.0 m)
3	489 st.	3.5% (3.2 m)
4	71 st.	0.2% (0.1 m)
5	607 st.	3.2% (2.9 m)
6	1327 st.	7.5% (6.9 m)
7	507 st.	2.5% (2.3 m)

Upper thread 91.5 m
Bobbin 30.5 m

File: Colorful S...Inch (Babylock, Bernina, Brother #PES0001)

Stitches: 17115

Size: 122.3 x 139.6 mm (4.81 x 5.50 ")

Begin: 61.1, 69.8 mm

End: 34.9, 46.4 mm

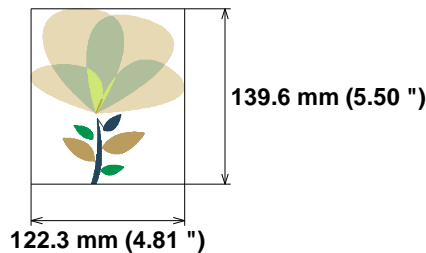
Start needle: 1

Colors: 7/7 , Stops: 6

Date: 16-09-23

This area is reserved for
your logo. Place logo.bmp
file (width: 721 , height: 237 pixels)
in the same folder as
embird.exe file.

This area is reserved for
your address information.
Place address.txt text file
containing your address in the
same folder as embird.exe
file.



Histogram

Stitches ratio diagram:



(8972) Stop 1
(14115) Stop 2
(14604) Stop 3
(14675) Stop 4
(15282) Stop 5
(16609) Stop 6
(17115) End



Needle Thread consumption

1	7569 st.	53.6% (40.8 m)
2	4345 st.	29.5% (22.5 m)
3	447 st.	3.5% (2.6 m)
4	64 st.	0.2% (0.1 m)
5	530 st.	3.2% (2.4 m)
6	1129 st.	7.5% (5.7 m)
7	430 st.	2.5% (1.9 m)

Upper thread	76.2 m
Bobbin	25.4 m

File: Colorful S...Inch (Babylock, Bernina, Brother #PES0020)

Stitches: 14514

Size: 111.2 x 126.9 mm (4.38 x 5.00 ")

Begin: 55.6, 63.4 mm

End: 31.7, 42.2 mm

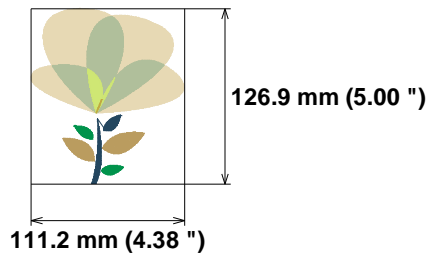
Start needle: 1

Colors: 7/7 , Stops: 6

Date: 16-09-23

This area is reserved for
your logo. Place logo.bmp
file (width: 721 , height: 237 pixels)
in the same folder as
embird.exe file.

This area is reserved for
your address information.
Place address.txt text file
containing your address in the
same folder as embird.exe
file.

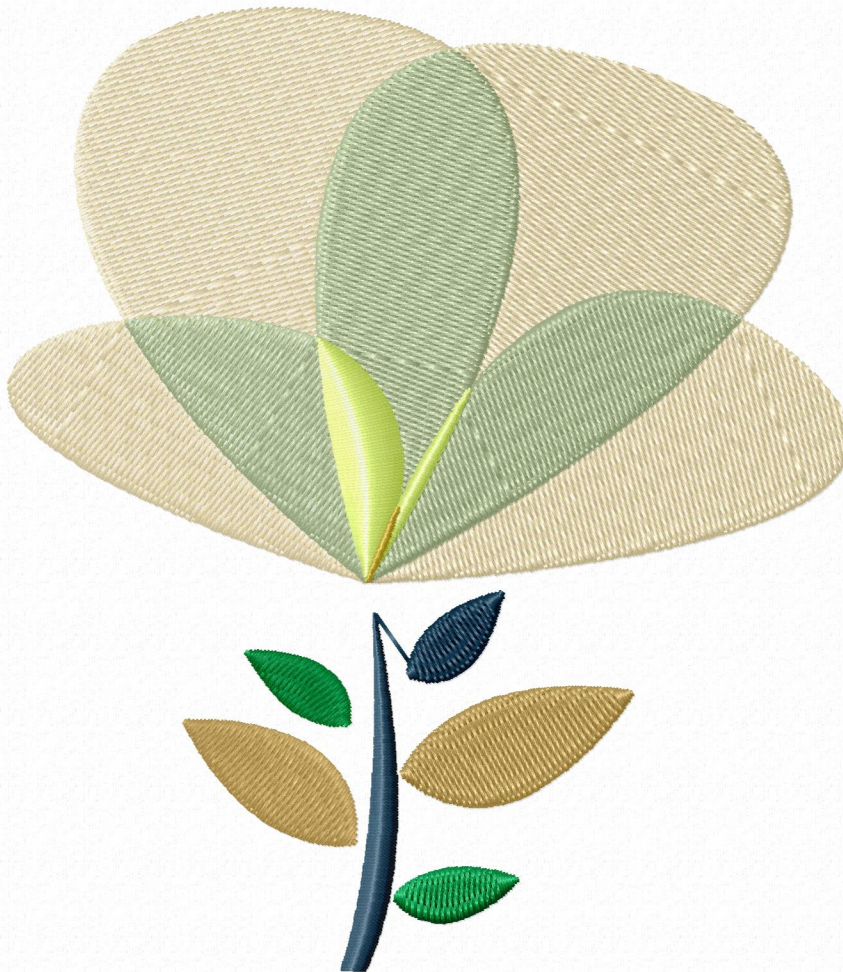


Histogram

Stitches ratio diagram:



(7570) Stop 1
(11915) Stop 2
(12362) Stop 3
(12426) Stop 4
(12956) Stop 5
(14085) Stop 6
(14514) End



Needle Thread consumption

1	6274 st.	53.4% (33.3 m)
2	3651 st.	29.6% (18.5 m)
3	402 st.	3.5% (2.2 m)
4	58 st.	0.2% (0.1 m)
5	466 st.	3.2% (2.0 m)
6	935 st.	7.5% (4.7 m)
7	367 st.	2.6% (1.6 m)

Upper thread 62.4 m
Bobbin 20.8 m

File: Colorful S...Inch (Babylock, Bernina, Brother #PES0020)

Stitches: 12153

Size: 100.2 x 114.2 mm (3.94 x 4.50 ")

Begin: 50.1, 57.1 mm

End: 28.7, 38.0 mm

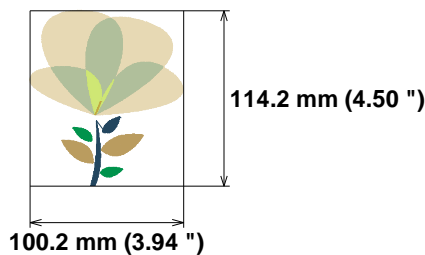
Start needle: 1

Colors: 7/7 , Stops: 6

Date: 16-09-23

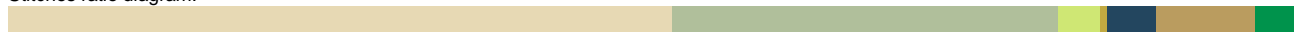
This area is reserved for
your logo. Place logo.bmp
file (width: 721 , height: 237 pixels)
in the same folder as
embird.exe file.

This area is reserved for
your address information.
Place address.txt text file
containing your address in the
same folder as embird.exe
file.

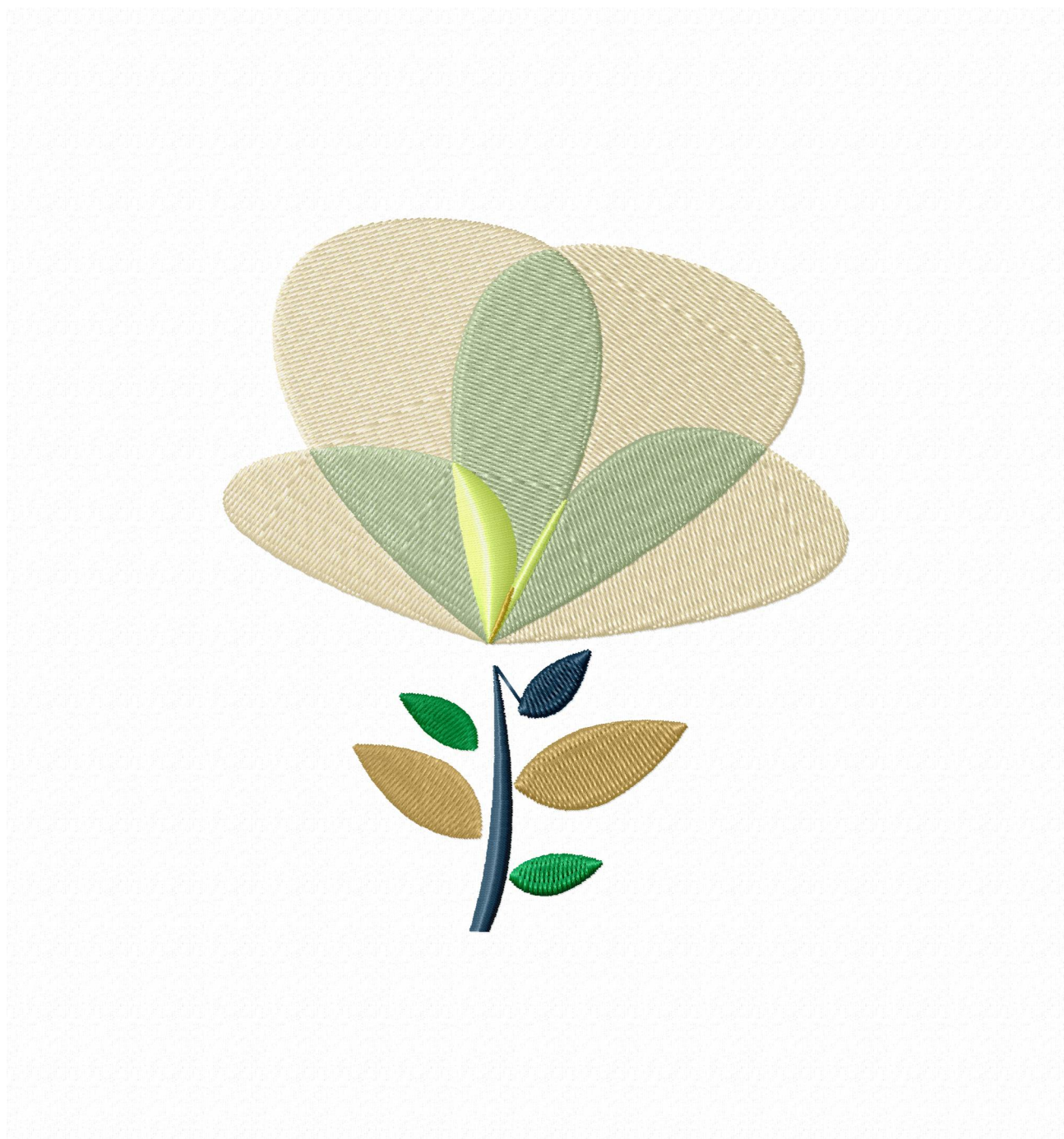


Histogram

Stitches ratio diagram:



(6275) Stop 1
(9926) Stop 2
(10328) Stop 3
(10386) Stop 4
(10852) Stop 5
(11787) Stop 6
(12153) End



Needle Thread consumption

1	5110 st.	53.7% (26.7 m)
2	2972 st.	29.6% (14.7 m)
3	364 st.	3.5% (1.8 m)
4	54 st.	0.2% (0.1 m)
5	390 st.	3.1% (1.6 m)
6	761 st.	7.6% (3.8 m)
7	285 st.	2.2% (1.1 m)

Upper thread	49.7 m
Bobbin	16.6 m

File: Colorful S...Inch (Babylock, Bernina, Brother #PES0020)

Stitches: 9936

Size: 89.0 x 101.5 mm (3.50 x 4.00 ")

Begin: 44.5, 50.7 mm

End: 25.5, 33.7 mm

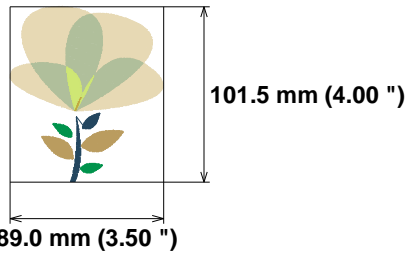
Start needle: 1

Colors: 7/7 , Stops: 6

Date: 16-09-23

This area is reserved for
your logo. Place logo.bmp
file (width: 721 , height: 237 pixels)
in the same folder as
embird.exe file.

This area is reserved for
your address information.
Place address.txt text file
containing your address in the
same folder as embird.exe
file.

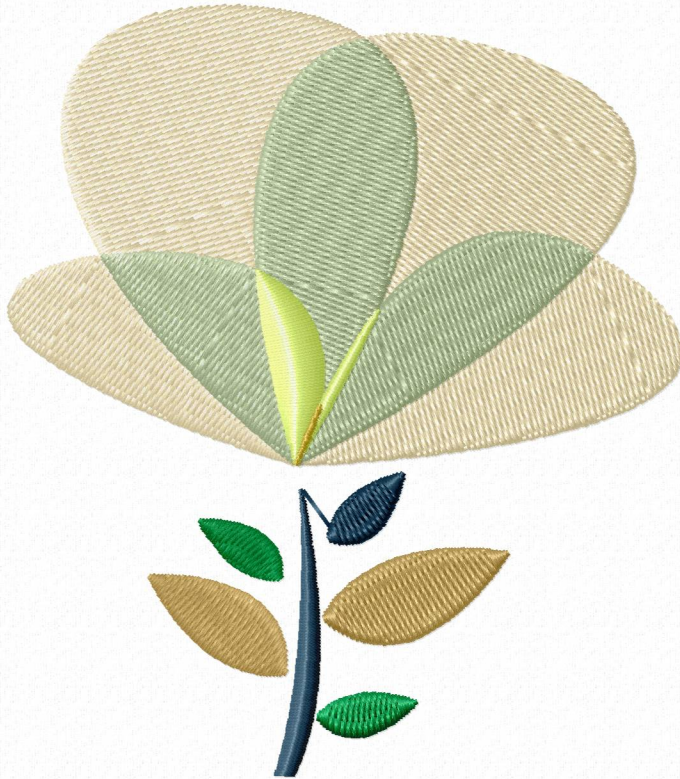


Histogram

Stitches ratio diagram:



(5111)	Stop 1
(8083)	Stop 2
(8447)	Stop 3
(8501)	Stop 4
(8891)	Stop 5
(9652)	Stop 6
(9936)	End



Needle Thread consumption

1	4015 st.	53.5% (20.5 m)
2	2366 st.	29.7% (11.4 m)
3	307 st.	3.5% (1.3 m)
4	48 st.	0.2% (0.1 m)
5	335 st.	3.2% (1.2 m)
6	624 st.	7.6% (2.9 m)
7	241 st.	2.3% (0.9 m)

Upper thread	38.3 m
Bobbin	12.8 m

File: Colorful S...Inch (Babylock, Bernina, Brother #PES0001)

Stitches: 7936

Size: 77.8 x 88.8 mm (3.06 x 3.50 ")

Begin: 38.9, 44.4 mm

End: 22.3, 29.5 mm

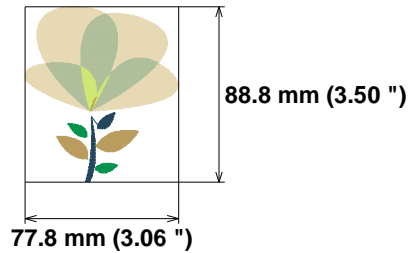
Start needle: 1

Colors: 7/7 , Stops: 6

Date: 16-09-23

This area is reserved for
your logo. Place logo.bmp
file (width: 721 , height: 237 pixels)
in the same folder as
embird.exe file.

This area is reserved for
your address information.
Place address.txt text file
containing your address in the
same folder as embird.exe
file.

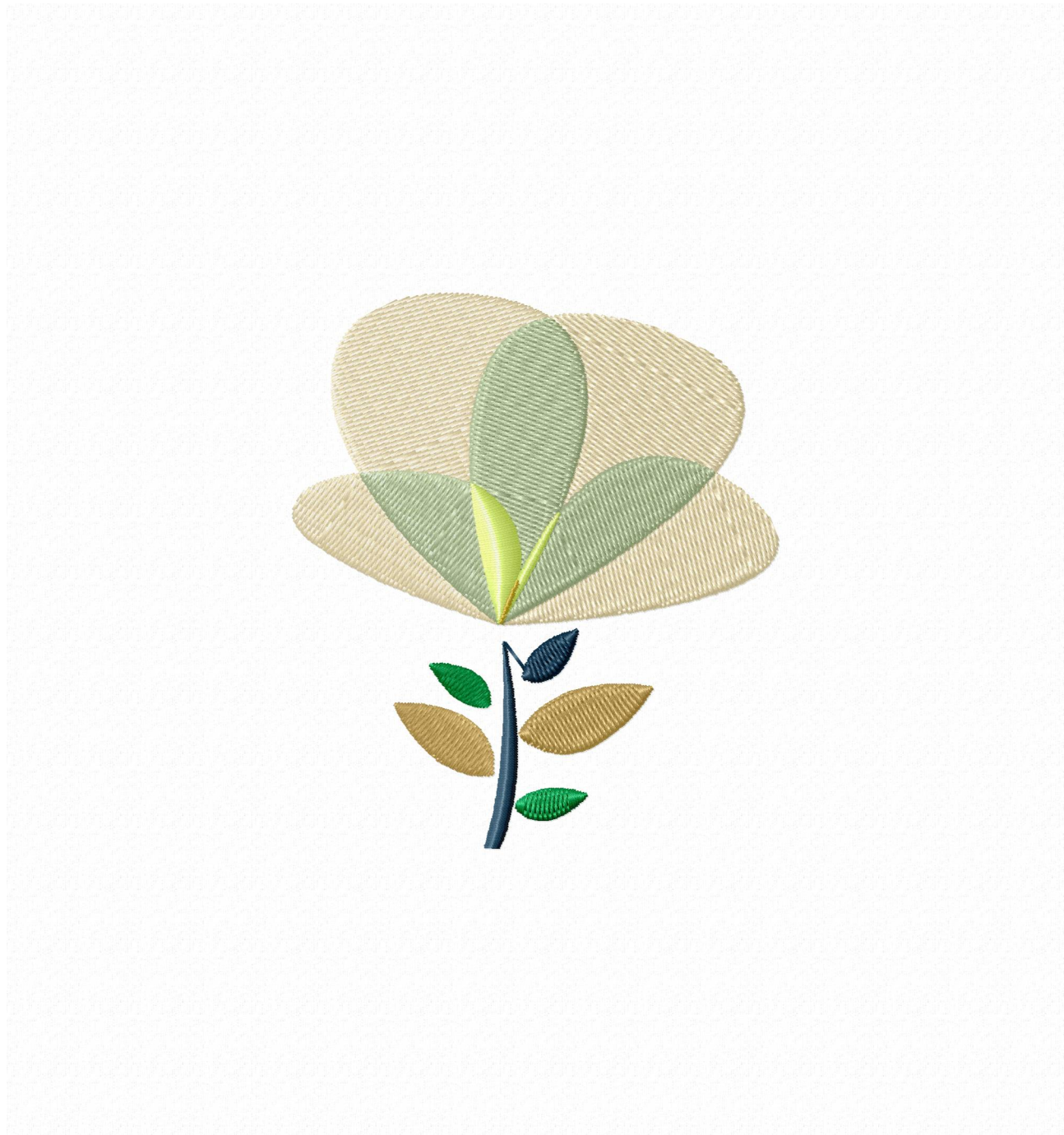


Histogram

Stitches ratio diagram:



(4016)	Stop 1
(6382)	Stop 2
(6689)	Stop 3
(6737)	Stop 4
(7072)	Stop 5
(7696)	Stop 6
(7936)	End



Needle Thread consumption

1	3071 st.	53.8% (15.3 m)
2	1802 st.	29.5% (8.4 m)
3	256 st.	3.2% (0.9 m)
4	42 st.	0.2% (0.1 m)
5	280 st.	3.3% (0.9 m)
6	487 st.	7.6% (2.2 m)
7	196 st.	2.4% (0.7 m)

Upper thread 28.5 m
Bobbin 9.5 m

File: Colorful S...Inch (Babylock, Bernina, Brother #PES0001)

Stitches: 6134

Size: 66.9 x 76.1 mm (2.63 x 3.00 ")

Begin: 33.4, 38.1 mm

End: 19.3, 25.3 mm

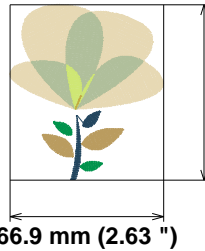
Start needle: 1

Colors: 7/7 , Stops: 6

Date: 16-09-23

This area is reserved for
your logo. Place logo.bmp
file (width: 721 , height: 237 pixels)
in the same folder as
embird.exe file.

This area is reserved for
your address information.
Place address.txt text file
containing your address in the
same folder as embird.exe
file.



76.1 mm (3.00 ")

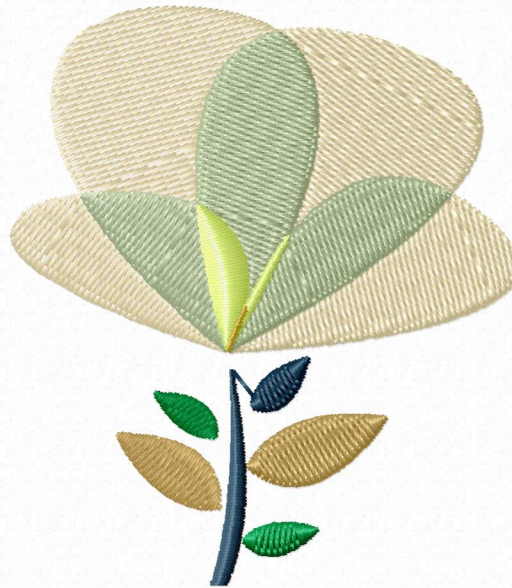
66.9 mm (2.63 ")

Histogram

Stitches ratio diagram:



(3072) Stop 1
(4874) Stop 2
(5130) Stop 3
(5172) Stop 4
(5452) Stop 5
(5939) Stop 6
(6134) End



Needle Thread consumption

1	2263 st.	54.0% (10.8 m)
2	1330 st.	29.7% (6.0 m)
3	190 st.	3.1% (0.6 m)
4	37 st.	0.3% (0.1 m)
5	228 st.	3.4% (0.7 m)
6	349 st.	7.2% (1.4 m)
7	138 st.	2.3% (0.5 m)

Upper thread 20.1 m
Bobbin 6.7 m

File: Colorful S...Inch (Babylock, Bernina, Brother #PES0001)

Stitches: 4535

Size: 55.7 x 63.4 mm (2.19 x 2.50 ")

Begin: 27.8, 31.7 mm

End: 16.1, 21.1 mm

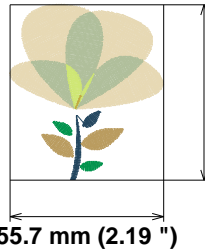
Start needle: 1

Colors: 7/7 , Stops: 6

Date: 16-09-23

This area is reserved for
your logo. Place logo.bmp
file (width: 721 , height: 237 pixels)
in the same folder as
embird.exe file.

This area is reserved for
your address information.
Place address.txt text file
containing your address in the
same folder as embird.exe
file.



Histogram

Stitches ratio diagram:



(2264) Stop 1
(3594) Stop 2
(3784) Stop 3
(3821) Stop 4
(4049) Stop 5
(4398) Stop 6
(4535) End



Needle Thread consumption

1	6884 st.	42.9% (36.8 m)
2	4770 st.	29.2% (25.0 m)
3	2053 st.	11.9% (10.2 m)
4	351 st.	2.7% (2.3 m)
5	338 st.	2.2% (1.9 m)
6	842 st.	4.9% (4.2 m)
7	259 st.	1.4% (1.2 m)
8	802 st.	4.9% (4.2 m)

Upper thread
Bobbin85.8 m
28.6 m

File: Colorful S...Inch (Babylock, Bernina, Brother #PES0001)

Stitches: 16299

Size: 126.9 x 139.6 mm (5.00 x 5.50 ")

Begin: 63.4, 69.8 mm

End: 111.3, 36.4 mm

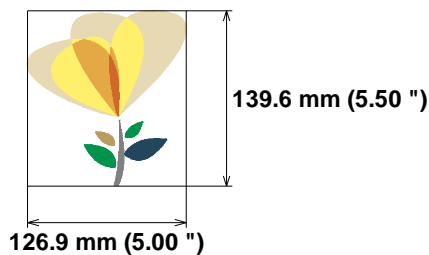
Start needle: 1

Colors: 8/8 , Stops: 7

Date: 16-09-23

This area is reserved for
your logo. Place logo.bmp
file (width: 721 , height: 237 pixels)
in the same folder as
embird.exe file.

This area is reserved for
your address information.
Place address.txt text file
containing your address in the
same folder as embird.exe
file.



Histogram

Stitches ratio diagram:



(6885) Stop 1
(11655) Stop 2
(13708) Stop 3
(14059) Stop 4
(14397) Stop 5
(15239) Stop 6
(15498) Stop 7
(16299) End



Needle Thread consumption

1	5844 st.	43.1% (30.7 m)
2	4070 st.	29.4% (20.9 m)
3	1722 st.	11.8% (8.4 m)
4	277 st.	2.3% (1.6 m)
5	312 st.	2.2% (1.6 m)
6	720 st.	4.9% (3.5 m)
7	218 st.	1.4% (1.0 m)
8	674 st.	4.9% (3.5 m)

Upper thread 71.2 m
Bobbin 23.7 m

File: Colorful S...Inch (Babylock, Bernina, Brother #PES0020)

Stitches: 13837

Size: 115.5 x 126.9 mm (4.55 x 5.00 ")

Begin: 57.7, 63.4 mm

End: 101.3, 33.0 mm

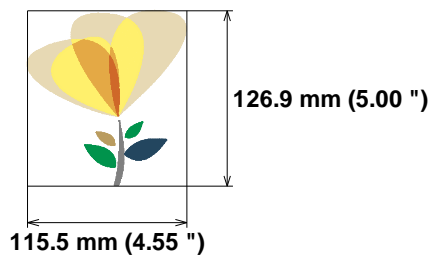
Start needle: 1

Colors: 8/8 , Stops: 7

Date: 16-09-23

This area is reserved for
your logo. Place logo.bmp
file (width: 721 , height: 237 pixels)
in the same folder as
embird.exe file.

This area is reserved for
your address information.
Place address.txt text file
containing your address in the
same folder as embird.exe
file.

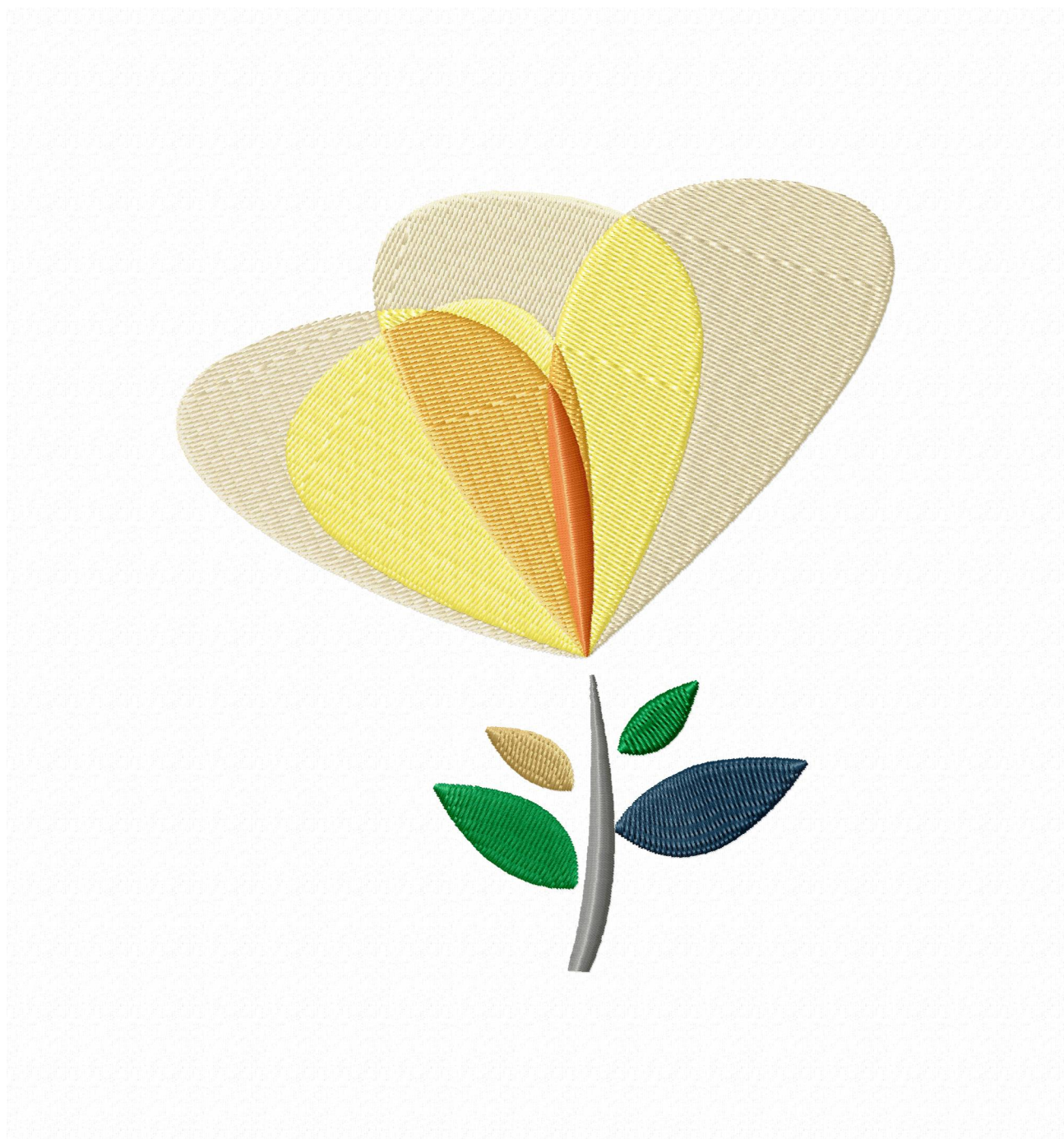


Histogram

Stitches ratio diagram:



(5845) Stop 1
(9915) Stop 2
(11637) Stop 3
(11914) Stop 4
(12226) Stop 5
(12946) Stop 6
(13164) Stop 7
(13837) End



Needle Thread consumption

1	4847 st.	43.1% (25.1 m)
2	3374 st.	29.3% (17.1 m)
3	1467 st.	11.9% (6.9 m)
4	261 st.	2.3% (1.4 m)
5	275 st.	2.2% (1.3 m)
6	604 st.	4.8% (2.8 m)
7	187 st.	1.4% (0.8 m)
8	562 st.	4.9% (2.9 m)

Upper thread 58.4 m
Bobbin 19.5 m

File: Colorful S...Inch (Babylock, Bernina, Brother #PES0020)

Stitches: 11577

Size: 104.0 x 114.2 mm (4.09 x 4.50 ")

Begin: 52.0, 57.1 mm

End: 91.2, 29.7 mm

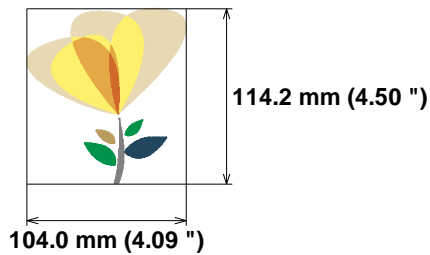
Start needle: 1

Colors: 8/8 , Stops: 7

Date: 16-09-23

This area is reserved for
your logo. Place logo.bmp
file (width: 721 , height: 237 pixels)
in the same folder as
embird.exe file.

This area is reserved for
your address information.
Place address.txt text file
containing your address in the
same folder as embird.exe
file.

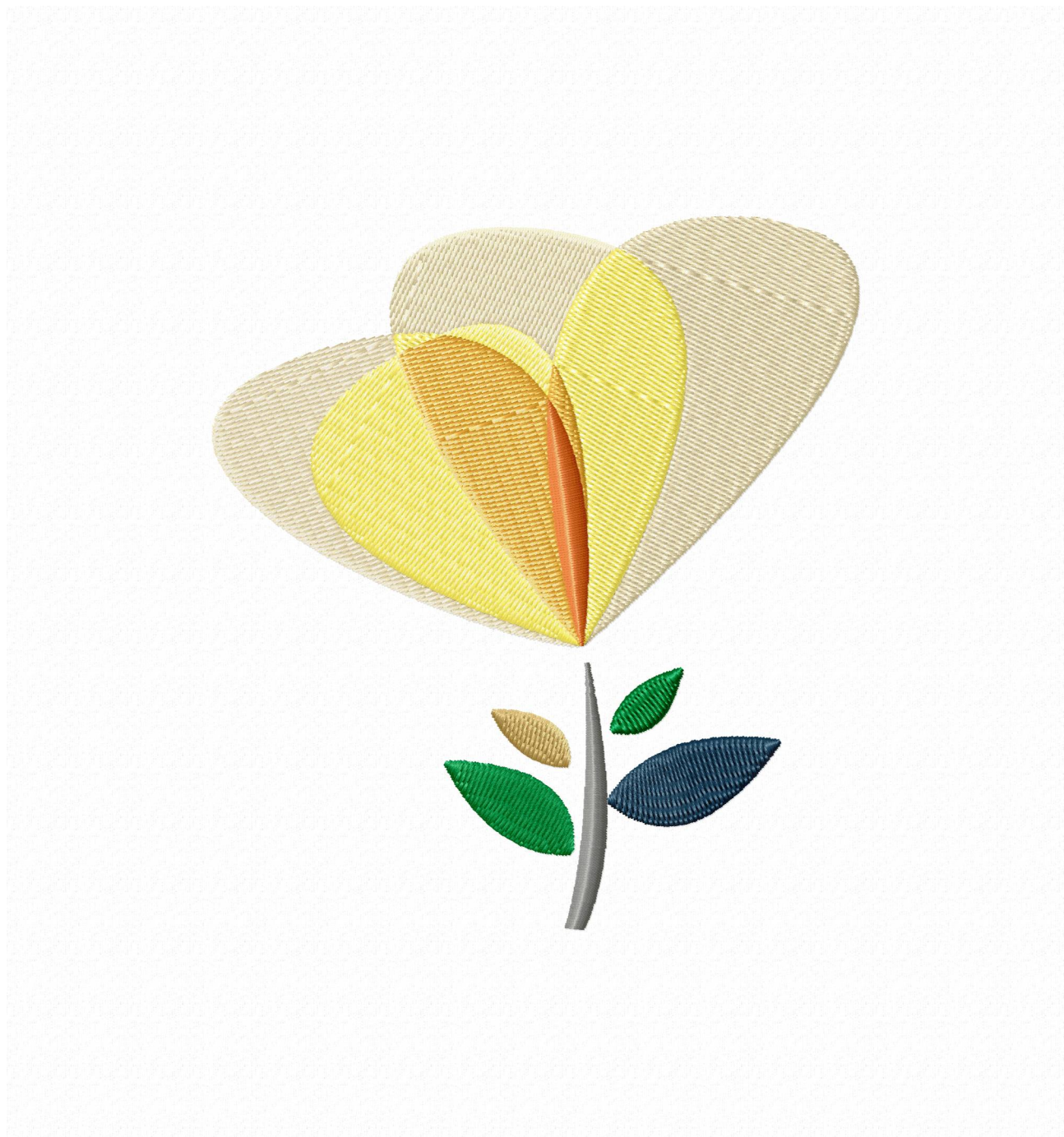


Histogram

Stitches ratio diagram:



(4848) Stop 1
(8222) Stop 2
(9689) Stop 3
(9950) Stop 4
(10225) Stop 5
(10829) Stop 6
(11016) Stop 7
(11577) End



Needle Thread consumption

1	3961 st.	43.3% (20.1 m)
2	2751 st.	29.3% (13.6 m)
3	1199 st.	11.9% (5.5 m)
4	232 st.	2.3% (1.1 m)
5	247 st.	2.3% (1.1 m)
6	486 st.	4.8% (2.2 m)
7	143 st.	1.2% (0.6 m)
8	465 st.	4.9% (2.3 m)

Upper thread 46.4 m
Bobbin 15.5 m

File: Colorful S...Inch (Babylock, Bernina, Brother #PES0020)

Stitches: 9484

Size: 92.4 x 101.5 mm (3.64 x 4.00 ")

Begin: 46.2, 50.7 mm

End: 81.0, 26.3 mm

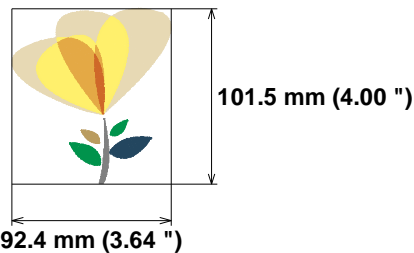
Start needle: 1

Colors: 8/8 , Stops: 7

Date: 16-09-23

This area is reserved for
your logo. Place logo.bmp
file (width: 721 , height: 237 pixels)
in the same folder as
embird.exe file.

This area is reserved for
your address information.
Place address.txt text file
containing your address in the
same folder as embird.exe
file.



Histogram

Stitches ratio diagram:



(3962) Stop 1
(6713) Stop 2
(7912) Stop 3
(8144) Stop 4
(8391) Stop 5
(8877) Stop 6
(9020) Stop 7
(9484) End



Needle Thread consumption

1	3181 st.	43.3% (15.7 m)
2	2181 st.	29.2% (10.6 m)
3	974 st.	12.1% (4.4 m)
4	197 st.	2.3% (0.8 m)
5	216 st.	2.3% (0.8 m)
6	392 st.	4.7% (1.7 m)
7	117 st.	1.2% (0.4 m)
8	360 st.	4.8% (1.7 m)

Upper thread 36.1 m
Bobbin 12.0 m

File: Colorful S...Inch (Babylock, Bernina, Brother #PES0001)

Stitches: 7618

Size: 81.0 x 88.8 mm (3.19 x 3.50 ")

Begin: 40.5, 44.4 mm

End: 71.0, 23.0 mm

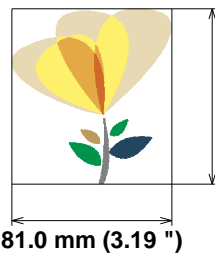
Start needle: 1

Colors: 8/8 , Stops: 7

Date: 16-09-23

This area is reserved for
your logo. Place logo.bmp
file (width: 721 , height: 237 pixels)
in the same folder as
embird.exe file.

This area is reserved for
your address information.
Place address.txt text file
containing your address in the
same folder as embird.exe
file.



88.8 mm (3.50 ")

81.0 mm (3.19 ")

Histogram

Stitches ratio diagram:



(3182) Stop 1
(5363) Stop 2
(6337) Stop 3
(6534) Stop 4
(6750) Stop 5
(7142) Stop 6
(7259) Stop 7
(7618) End



Needle Thread consumption

1	2465 st.	43.4% (11.7 m)
2	1694 st.	29.2% (7.9 m)
3	742 st.	11.8% (3.2 m)
4	169 st.	2.4% (0.6 m)
5	187 st.	2.4% (0.6 m)
6	310 st.	4.8% (1.3 m)
7	98 st.	1.3% (0.3 m)
8	289 st.	4.8% (1.3 m)

Upper thread
Bobbin27.1 m
9.0 m

File: Colorful S...Inch (Babylock, Bernina, Brother #PES0001)

Stitches: 5954

Size: 69.4 x 76.0 mm (2.73 x 2.99 ")

Begin: 34.7, 38.0 mm

End: 60.7, 19.6 mm

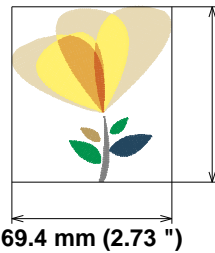
Start needle: 1

Colors: 8/8 , Stops: 7

Date: 16-09-23

This area is reserved for
your logo. Place logo.bmp
file (width: 721 , height: 237 pixels)
in the same folder as
embird.exe file.

This area is reserved for
your address information.
Place address.txt text file
containing your address in the
same folder as embird.exe
file.



76.0 mm (2.99 ")

69.4 mm (2.73 ")

Histogram

Stitches ratio diagram:



(2466) Stop 1
(4160) Stop 2
(4902) Stop 3
(5071) Stop 4
(5258) Stop 5
(5568) Stop 6
(5666) Stop 7
(5954) End



Needle Thread consumption

1	1757 st.	43.3% (8.1 m)
2	1239 st.	29.5% (5.5 m)
3	533 st.	11.7% (2.2 m)
4	140 st.	2.4% (0.5 m)
5	153 st.	2.5% (0.5 m)
6	227 st.	4.5% (0.8 m)
7	69 st.	1.2% (0.2 m)
8	213 st.	4.9% (0.9 m)

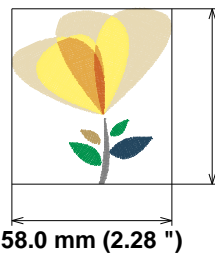
Upper thread
Bobbin

18.8 m
6.3 m

File: Colorful S...Inch (Babylock, Bernina, Brother #PES0001)**Stitches: 4331****Size: 58.0 x 63.4 mm (2.28 x 2.50 ")****Begin: 29.0, 31.7 mm****End: 50.8, 16.3 mm****Start needle: 1****Colors: 8/8 , Stops: 7****Date: 16-09-23**

This area is reserved for
your logo. Place logo.bmp
file (width: 721 , height: 237 pixels)
in the same folder as
embird.exe file.

This area is reserved for
your address information.
Place address.txt text file
containing your address in the
same folder as embird.exe
file.



63.4 mm (2.50 ")

58.0 mm (2.28 ")

Stitches ratio diagram:



Histogram

(1758) Stop 1
(2997) Stop 2
(3530) Stop 3
(3670) Stop 4
(3823) Stop 5
(4050) Stop 6
(4119) Stop 7
(4331) End



Needle Thread consumption

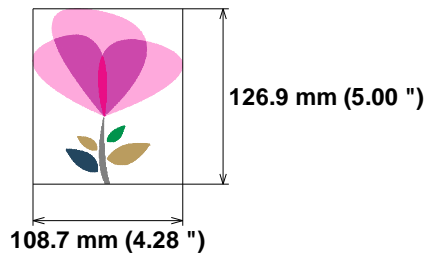
1	313 st.	2.5% (1.6 m)
2	498 st.	3.8% (2.5 m)
3	892 st.	6.9% (4.5 m)
4	225 st.	1.5% (1.0 m)
5	6256 st.	51.2% (33.4 m)
6	3780 st.	31.3% (20.4 m)
7	274 st.	2.8% (1.8 m)

Upper thread 65.2 m
Bobbin 21.7 m

File: Colorful S...Inch (Babylock, Bernina, Brother #PES0020)**Stitches: 12238****Size: 108.7 x 126.9 mm (4.28 x 5.00 ")****Begin: 54.3, 63.4 mm****End: 52.1, 49.3 mm****Start needle: 1****Colors: 7/7 , Stops: 6****Date: 16-09-23**

This area is reserved for
your logo. Place logo.bmp
file (width: 721 , height: 237 pixels)
in the same folder as
embird.exe file.

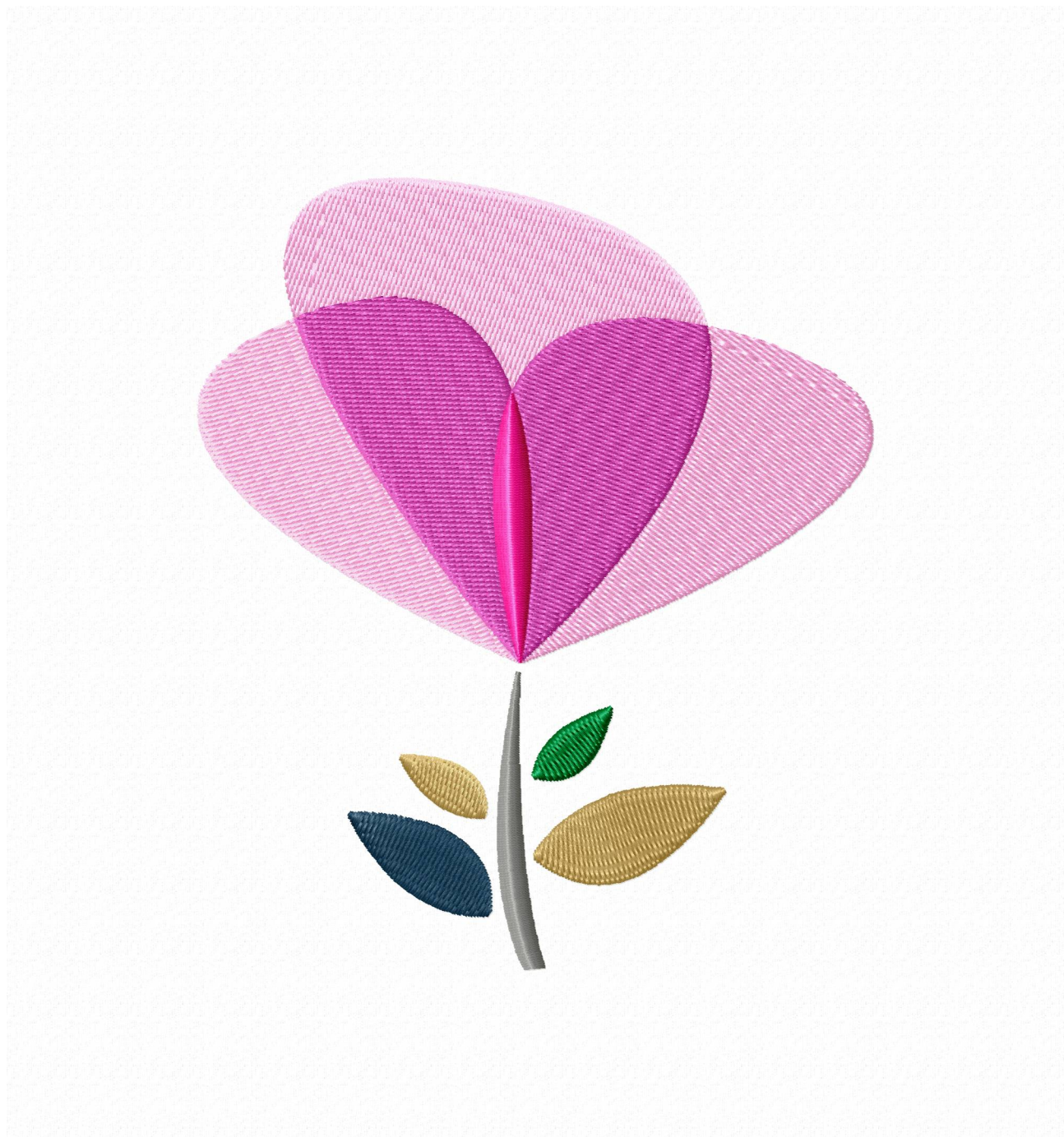
This area is reserved for
your address information.
Place address.txt text file
containing your address in the
same folder as embird.exe
file.

**Histogram**

Stitches ratio diagram:



(314) Stop 1
(812) Stop 2
(1704) Stop 3
(1929) Stop 4
(8185) Stop 5
(11965) Stop 6
(12238) End



Needle Thread consumption

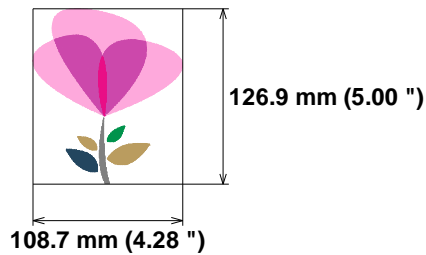
1	313 st.	2.5% (1.6 m)
2	498 st.	3.8% (2.5 m)
3	892 st.	6.9% (4.5 m)
4	225 st.	1.5% (1.0 m)
5	6256 st.	51.2% (33.4 m)
6	3780 st.	31.3% (20.4 m)
7	274 st.	2.8% (1.8 m)

Upper thread 65.2 m
Bobbin 21.7 m

File: Colorful S...Inch (Babylock, Bernina, Brother #PES0020)**Stitches: 12238****Size: 108.7 x 126.9 mm (4.28 x 5.00 ")****Begin: 54.3, 63.4 mm****End: 52.1, 49.3 mm****Start needle: 1****Colors: 7/7 , Stops: 6****Date: 16-09-23**

This area is reserved for
your logo. Place logo.bmp
file (width: 721 , height: 237 pixels)
in the same folder as
embird.exe file.

This area is reserved for
your address information.
Place address.txt text file
containing your address in the
same folder as embird.exe
file.

**Histogram**

Stitches ratio diagram:



(314) Stop 1
(812) Stop 2
(1704) Stop 3
(1929) Stop 4
(8185) Stop 5
(11965) Stop 6
(12238) End



Needle Thread consumption

1	281 st.	2.5% (1.3 m)
2	420 st.	3.8% (2.0 m)
3	747 st.	6.9% (3.7 m)
4	188 st.	1.5% (0.8 m)
5	5184 st.	51.1% (27.2 m)
6	3172 st.	31.4% (16.7 m)
7	249 st.	2.8% (1.5 m)

Upper thread 53.3 m
Bobbin 17.8 m

File: Colorful S...Inch (Babylock, Bernina, Brother #PES0020)

Stitches: 10241

Size: 97.7 x 114.3 mm (3.85 x 4.50 ")

Begin: 48.8, 57.1 mm

End: 46.8, 44.4 mm

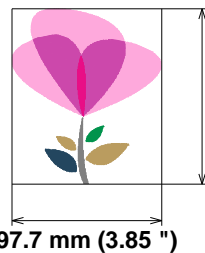
Start needle: 1

Colors: 7/7 , Stops: 6

Date: 16-09-23

This area is reserved for
your logo. Place logo.bmp
file (width: 721 , height: 237 pixels)
in the same folder as
embird.exe file.

This area is reserved for
your address information.
Place address.txt text file
containing your address in the
same folder as embird.exe
file.



114.3 mm (4.50 ")

97.7 mm (3.85 ")

Histogram

Stitches ratio diagram:



(282) Stop 1
(702) Stop 2
(1449) Stop 3
(1637) Stop 4
(6821) Stop 5
(9993) Stop 6
(10241) End



Needle Thread consumption

1	249 st.	2.6% (1.1 m)
2	338 st.	3.9% (1.6 m)
3	607 st.	6.7% (2.8 m)
4	150 st.	1.4% (0.6 m)
5	4213 st.	51.3% (21.7 m)
6	2569 st.	31.4% (13.3 m)
7	229 st.	2.8% (1.2 m)

Upper thread 42.3 m
Bobbin 14.1 m

File: Colorful S...Inch (Babylock, Bernina, Brother #PES0020)

Stitches: 8355

Size: 86.8 x 101.5 mm (3.42 x 4.00 ")

Begin: 43.4, 50.7 mm

End: 41.6, 39.4 mm

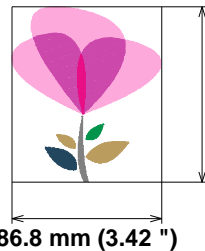
Start needle: 1

Colors: 7/7 , Stops: 6

Date: 16-09-23

This area is reserved for
your logo. Place logo.bmp
file (width: 721 , height: 237 pixels)
in the same folder as
embird.exe file.

This area is reserved for
your address information.
Place address.txt text file
containing your address in the
same folder as embird.exe
file.



101.5 mm (4.00 ")

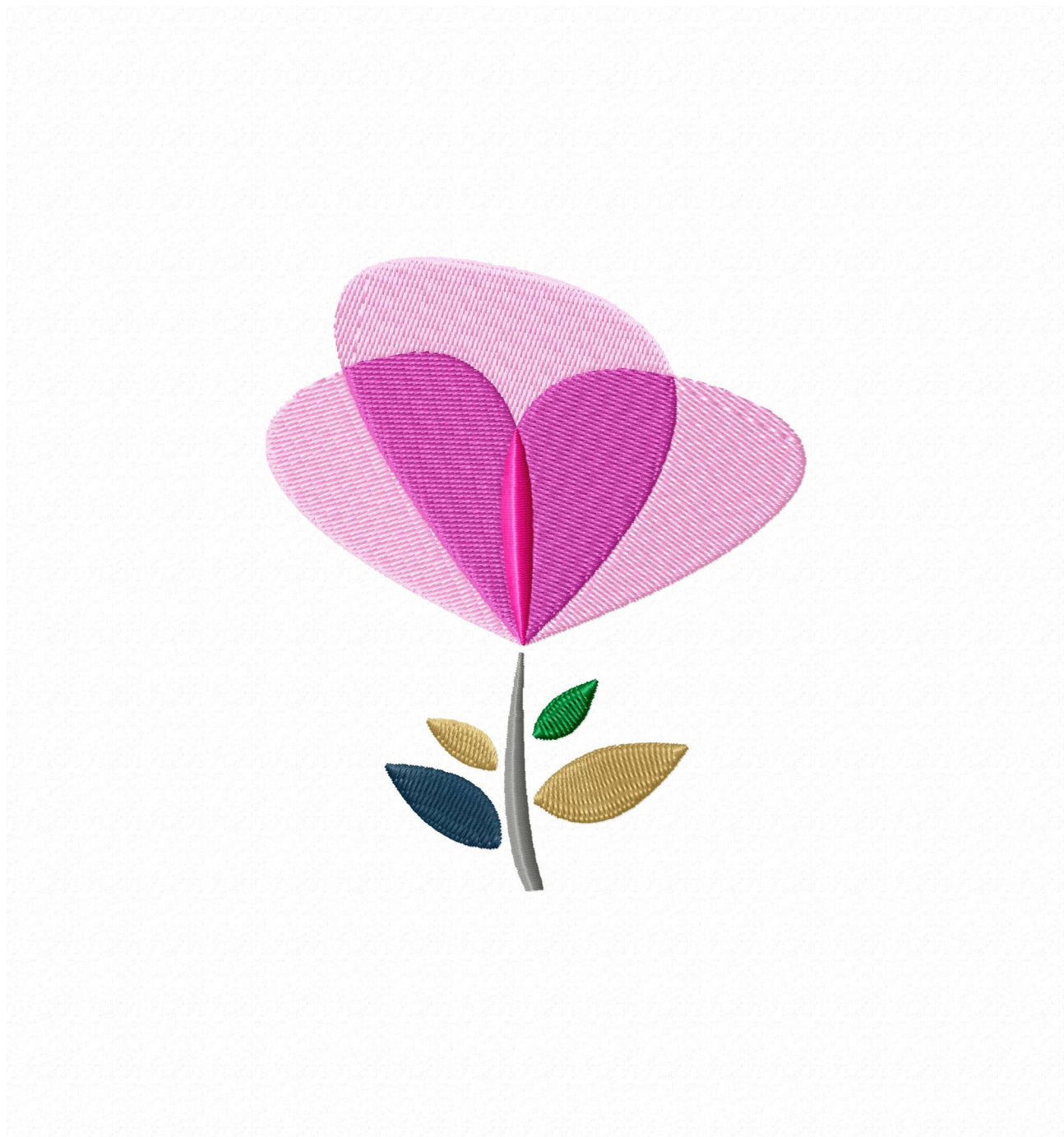
86.8 mm (3.42 ")

Histogram

Stitches ratio diagram:



(250) Stop 1
(588) Stop 2
(1195) Stop 3
(1345) Stop 4
(5558) Stop 5
(8127) Stop 6
(8355) End



Needle Thread consumption

1	219 st.	2.6% (0.9 m)
2	273 st.	3.8% (1.3 m)
3	480 st.	6.7% (2.2 m)
4	123 st.	1.4% (0.5 m)
5	3359 st.	51.2% (16.9 m)
6	2046 st.	31.4% (10.3 m)
7	205 st.	2.8% (0.9 m)

Upper thread 32.9 m
Bobbin 11.0 m

File: Colorful S...Inch (Babylock, Bernina, Brother #PES0001)

Stitches: 6705

Size: 76.1 x 88.9 mm (3.00 x 3.50 ")

Begin: 38.0, 44.5 mm

End: 36.5, 34.6 mm

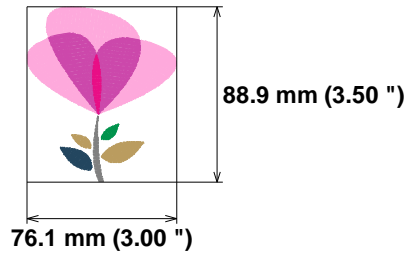
Start needle: 1

Colors: 7/7 , Stops: 6

Date: 16-09-23

This area is reserved for
your logo. Place logo.bmp
file (width: 721 , height: 237 pixels)
in the same folder as
embird.exe file.

This area is reserved for
your address information.
Place address.txt text file
containing your address in the
same folder as embird.exe
file.



Histogram

Stitches ratio diagram:



(220) Stop 1
(493) Stop 2
(973) Stop 3
(1096) Stop 4
(4455) Stop 5
(6501) Stop 6
(6705) End



Needle Thread consumption

1	195 st.	2.8% (0.7 m)
2	214 st.	3.8% (0.9 m)
3	383 st.	6.7% (1.6 m)
4	99 st.	1.4% (0.3 m)
5	2590 st.	51.3% (12.6 m)
6	1564 st.	31.1% (7.7 m)
7	168 st.	2.9% (0.7 m)

Upper thread 24.6 m
Bobbin 8.2 m

File: Colorful S...Inch (Babylock, Bernina, Brother #PES0001)

Stitches: 5213

Size: 65.2 x 76.2 mm (2.57 x 3.00 ")

Begin: 32.6, 38.1 mm

End: 31.3, 29.6 mm

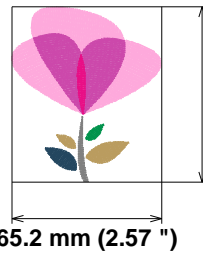
Start needle: 1

Colors: 7/7 , Stops: 6

Date: 16-09-23

This area is reserved for
your logo. Place logo.bmp
file (width: 721 , height: 237 pixels)
in the same folder as
embird.exe file.

This area is reserved for
your address information.
Place address.txt text file
containing your address in the
same folder as embird.exe
file.



76.2 mm (3.00 ")

65.2 mm (2.57 ")

Histogram

Stitches ratio diagram:



(196) Stop 1
(410) Stop 2
(793) Stop 3
(892) Stop 4
(3482) Stop 5
(5046) Stop 6
(5213) End



Needle Thread consumption

1	157 st.	2.8% (0.5 m)
2	153 st.	3.4% (0.6 m)
3	281 st.	6.7% (1.1 m)
4	73 st.	1.4% (0.2 m)
5	1878 st.	51.1% (8.8 m)
6	1159 st.	31.6% (5.4 m)
7	140 st.	3.0% (0.5 m)

Upper thread 17.2 m
Bobbin 5.7 m

File: Colorful S...Inch (Babylock, Bernina, Brother #PES0001)

Stitches: 3841

Size: 54.3 x 63.5 mm (2.14 x 2.50 ")

Begin: 27.1, 31.8 mm

End: 26.1, 24.7 mm

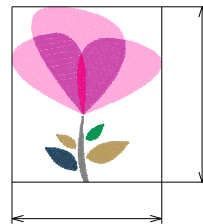
Start needle: 1

Colors: 7/7, Stops: 6

Date: 16-09-23

This area is reserved for
your logo. Place logo.bmp
file (width: 721 , height: 237 pixels)
in the same folder as
embird.exe file.

This area is reserved for
your address information.
Place address.txt text file
containing your address in the
same folder as embird.exe
file.



63.5 mm (2.50 ")

54.3 mm (2.14 ")

Histogram

Stitches ratio diagram:



(158) Stop 1
(311) Stop 2
(592) Stop 3
(665) Stop 4
(2543) Stop 5
(3702) Stop 6
(3841) End

