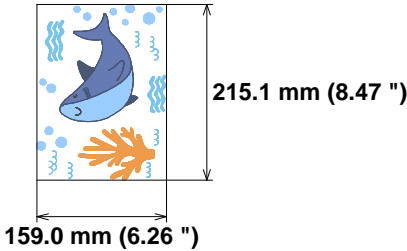


Needle	Thread consumption
1 1366 st.	15.7% (7.2 m)
2 2029 st.	22.8% (10.5 m)
3 1061 st.	8.4% (3.9 m)
4 118 st.	0.7% (0.3 m)
5 1891 st.	11.3% (5.2 m)
6 2588 st.	20.2% (9.3 m)
7 3622 st.	20.8% (9.5 m)
Upper thread	45.8 m
Bobbin	15.3 m

File: 1_16.PES (Babylock, Bernina, Brother #PES0060)
Design name: MikaMoka Fundo Mar Catex1_16
Stitches: 12675
Size: 159.0 x 215.1 mm (6.26 x 8.47 ")
Begin: 79.5, 107.6 mm
End: 79.5, 107.6 mm
Start needle: 1
Colors: 6/7 , Stops: 6
Date: 06-11-23

This area is reserved for your logo. Place logo.bmp file (width: 1442 , height: 474 pixels) in the same folder as embird.exe file.

This area is reserved for your address information. Place address.txt text file containing your address in the same folder as embird.exe file.



Histogram

- (1367) Stop 1
- (3396) Stop 2
- (4457) Stop 3
- (4575) Stop 4
- (6466) Stop 5
- (9054) Stop 6
- (12675) End

Title: MikaMoka Fundo Mar Catex1_16

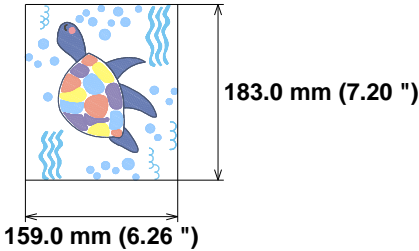
Stitches ratio diagram:



Needle	Thread consumption	
1	1465 st.	9.1% (4.6 m)
2	1300 st.	13.0% (6.5 m)
3	623 st.	4.6% (2.3 m)
4	1184 st.	8.4% (4.2 m)
5	66 st.	0.5% (0.3 m)
6	4561 st.	25.3% (12.7 m)
7	2361 st.	21.5% (10.8 m)
8	1025 st.	7.7% (3.9 m)
9	1321 st.	9.5% (4.8 m)
10	62 st.	0.6% (0.3 m)

Upper thread 50.4 m
Bobbin 16.8 m

File: 2_16.PES (Babylock, Bernina, Brother #PES0060)
Design name: MikaMoka Fundo Mar Catex2_16
Stitches: 13968
Size: 159.0 x 183.0 mm (6.26 x 7.20 ")
Begin: 79.5, 91.5 mm
End: 79.5, 91.5 mm
Start needle: 1
Colors: 10/10 , Stops: 9
Date: 06-11-23



This area is reserved for your logo. Place logo.bmp file (width: 1442 , height: 474 pixels) in the same folder as embird.exe file.

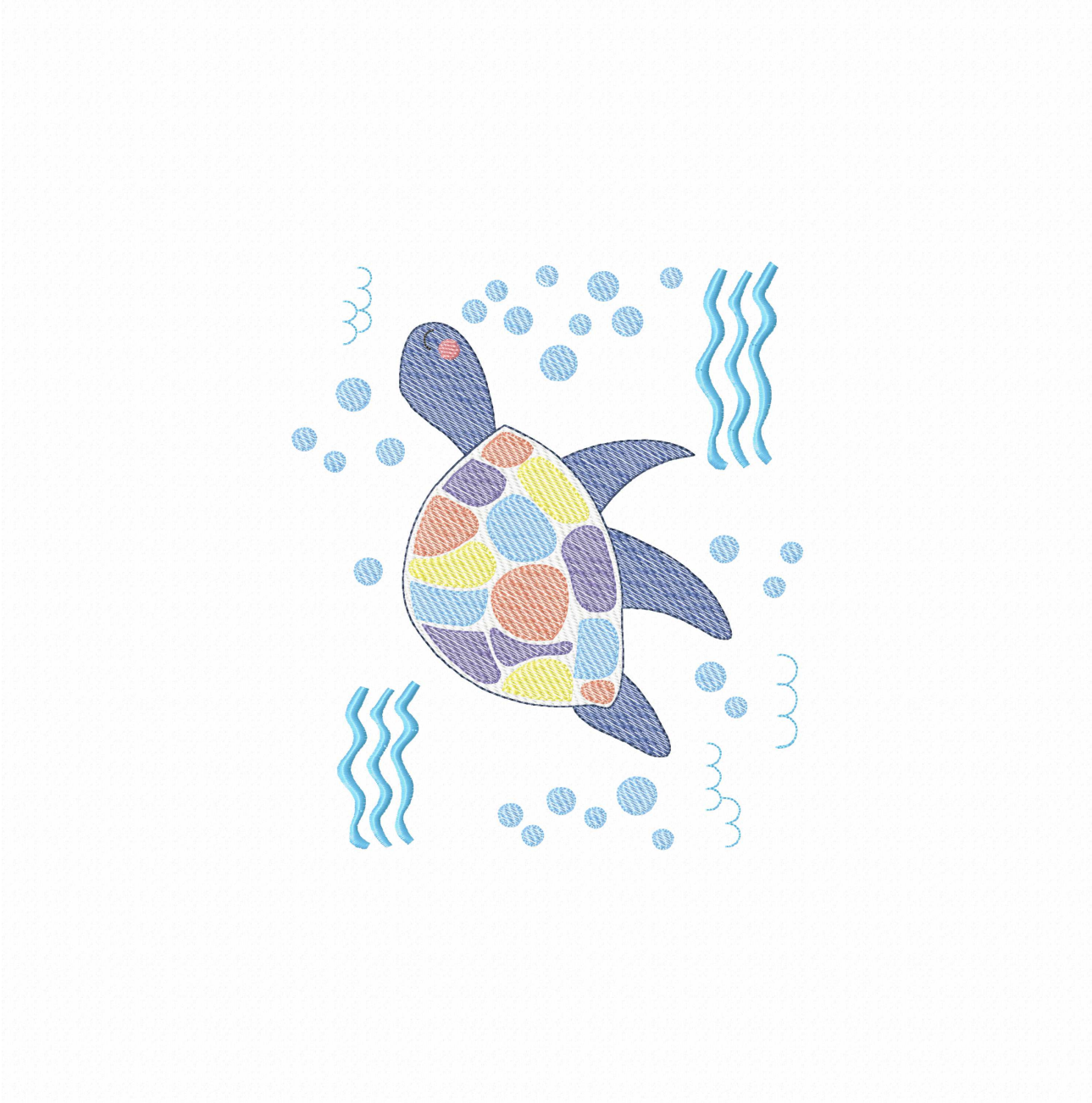
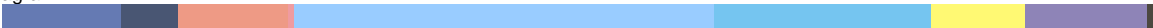
This area is reserved for your address information. Place address.txt text file containing your address in the same folder as embird.exe file.

Histogram

- (1466) Stop 1
- (2766) Stop 2
- (3389) Stop 3
- (4573) Stop 4
- (4639) Stop 5
- (9200) Stop 6
- (11561) Stop 7
- (12586) Stop 8
- (13907) Stop 9
- (13968) End

Title: MikaMoka Fundo Mar Catex2_16

Stitches ratio diagram:



Needle Thread consumption

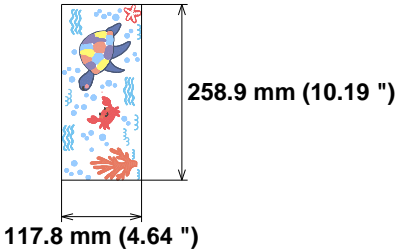
1	2208 st.	13.8% (7.3 m)
2	1373 st.	6.9% (3.7 m)
3	935 st.	7.1% (3.7 m)
4	476 st.	3.2% (1.7 m)
5	884 st.	5.2% (2.8 m)
6	4888 st.	21.7% (11.4 m)
7	2853 st.	18.1% (9.6 m)
8	155 st.	1.0% (0.5 m)
9	2550 st.	11.7% (6.2 m)
10	55 st.	0.5% (0.3 m)
11	782 st.	4.8% (2.5 m)
12	1022 st.	6.0% (3.1 m)

Upper thread 52.7 m
Bobbin 17.6 m

File: 2G_16.PES (Babylock, Bernina, Brother #PES0060)
Design name: MikaMoka Fundo Mar Catex2G_16
Stitches: 18181
Size: 117.8 x 258.9 mm (4.64 x 10.19 ")
Begin: 58.9, 129.5 mm
End: 58.9, 129.5 mm
Start needle: 1
Colors: 12/12 , Stops: 11
Date: 06-11-23

This area is reserved for
your logo. Place logo.bmp
file (width: 1442 , height: 474 pixels)
in the same folder as
embird.exe file.

This area is reserved for
your address information.
Place address.txt text file
containing your address in the
same folder as embird.exe
file.

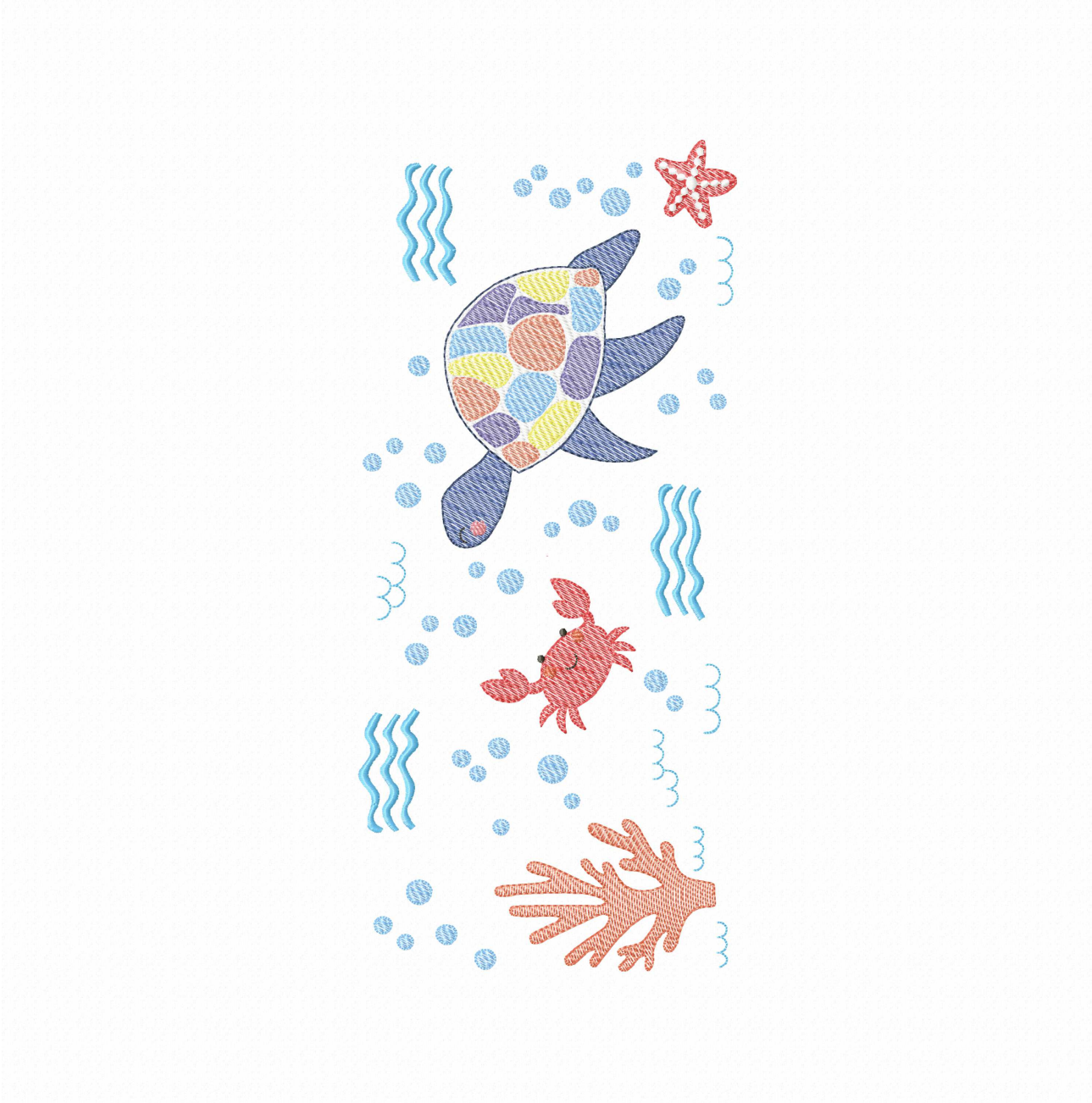


Histogram

(2209)	Stop 1
(3582)	Stop 2
(4517)	Stop 3
(4993)	Stop 4
(5877)	Stop 5
(10765)	Stop 6
(13618)	Stop 7
(13773)	Stop 8
(16323)	Stop 9
(16378)	Stop 10
(17160)	Stop 11
(18181)	End

Title: MikaMoka Fundo Mar Catex2G_16

Stitches ratio diagram:



Needle Thread consumption

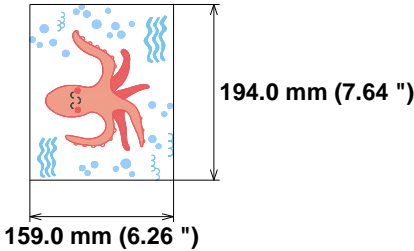
1	2536 st.	35.7% (13.3 m)
2	2460 st.	20.9% (7.7 m)
3	132 st.	0.7% (0.3 m)
4	3087 st.	18.9% (7.0 m)
5	2079 st.	23.8% (8.8 m)

Upper thread	37.1 m
Bobbin	12.4 m

File: 3_16.PES (Babylock, Bernina, Brother #PES0060)
Design name: MikaMoka Fundo Mar Catex3_16
Stitches: 10294
Size: 159.0 x 194.0 mm (6.26 x 7.64 ")
Begin: 79.5, 97.0 mm
End: 79.5, 97.0 mm
Start needle: 1
Colors: 5/5 , Stops: 4
Date: 06-11-23

This area is reserved for your logo. Place logo.bmp file (width: 1442 , height: 474 pixels) in the same folder as embird.exe file.

This area is reserved for your address information. Place address.txt text file containing your address in the same folder as embird.exe file.

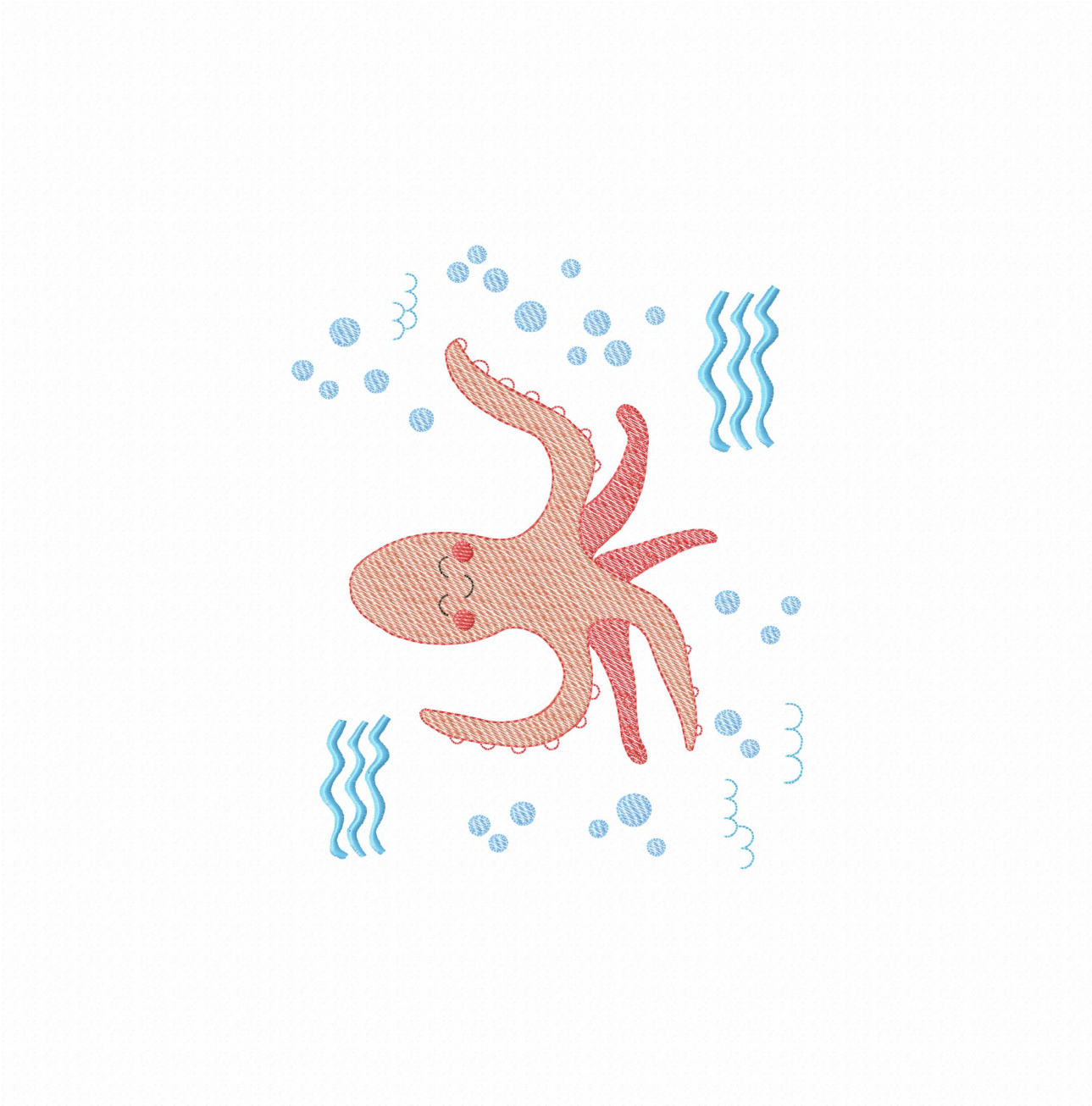


Histogram

(2537)	Stop 1
(4997)	Stop 2
(5129)	Stop 3
(8216)	Stop 4
(10294)	End

Title: MikaMoka Fundo Mar Catex3_16

Stitches ratio diagram:

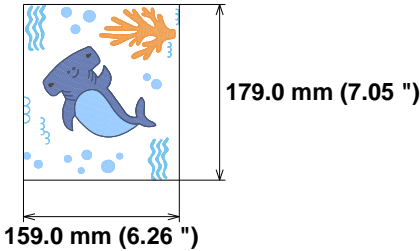


Needle	Thread consumption
1 2751 st.	26.6% (10.1 m)
2 1987 st.	26.1% (9.9 m)
3 2150 st.	20.2% (7.7 m)
4 747 st.	6.7% (2.6 m)
5 2891 st.	19.2% (7.3 m)
6 89 st.	1.2% (0.5 m)
Upper thread	38.1 m
Bobbin	12.7 m

File: 4_16.PES (Babylock, Bernina, Brother #PES0060)
Design name: MikaMoka Fundo Mar Catex4_16
Stitches: 10615
Size: 159.0 x 179.0 mm (6.26 x 7.05 ")
Begin: 79.5, 89.5 mm
End: 79.5, 89.5 mm
Start needle: 1
Colors: 6/6 , Stops: 5
Date: 06-11-23

This area is reserved for your logo. Place logo.bmp file (width: 1442 , height: 474 pixels) in the same folder as embird.exe file.

This area is reserved for your address information. Place address.txt text file containing your address in the same folder as embird.exe file.



Histogram

- (2752) Stop 1
- (4739) Stop 2
- (6889) Stop 3
- (7636) Stop 4
- (10527) Stop 5
- (10615) End

Title: MikaMoka Fundo Mar Catex4_16

Stitches ratio diagram:

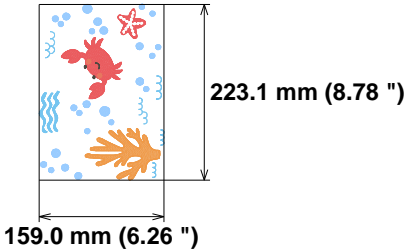


Needle	Thread consumption
1 3497 st.	21.2% (8.9 m)
2 1763 st.	15.1% (6.4 m)
3 3584 st.	33.4% (14.1 m)
4 394 st.	3.4% (1.4 m)
5 113 st.	1.1% (0.5 m)
6 127 st.	0.9% (0.4 m)
7 3899 st.	24.8% (10.5 m)
Upper thread	42.1 m
Bobbin	14.0 m

File: 5_16.PES (Babylock, Bernina, Brother #PES0060)
Design name: MikaMoka Fundo Mar Catex5_16
Stitches: 13377
Size: 159.0 x 223.1 mm (6.26 x 8.78 ")
Begin: 79.5, 111.6 mm
End: 79.5, 111.6 mm
Start needle: 1
Colors: 7/7 , Stops: 6
Date: 06-11-23

This area is reserved for your logo. Place logo.bmp file (width: 1442 , height: 474 pixels) in the same folder as embird.exe file.

This area is reserved for your address information. Place address.txt text file containing your address in the same folder as embird.exe file.

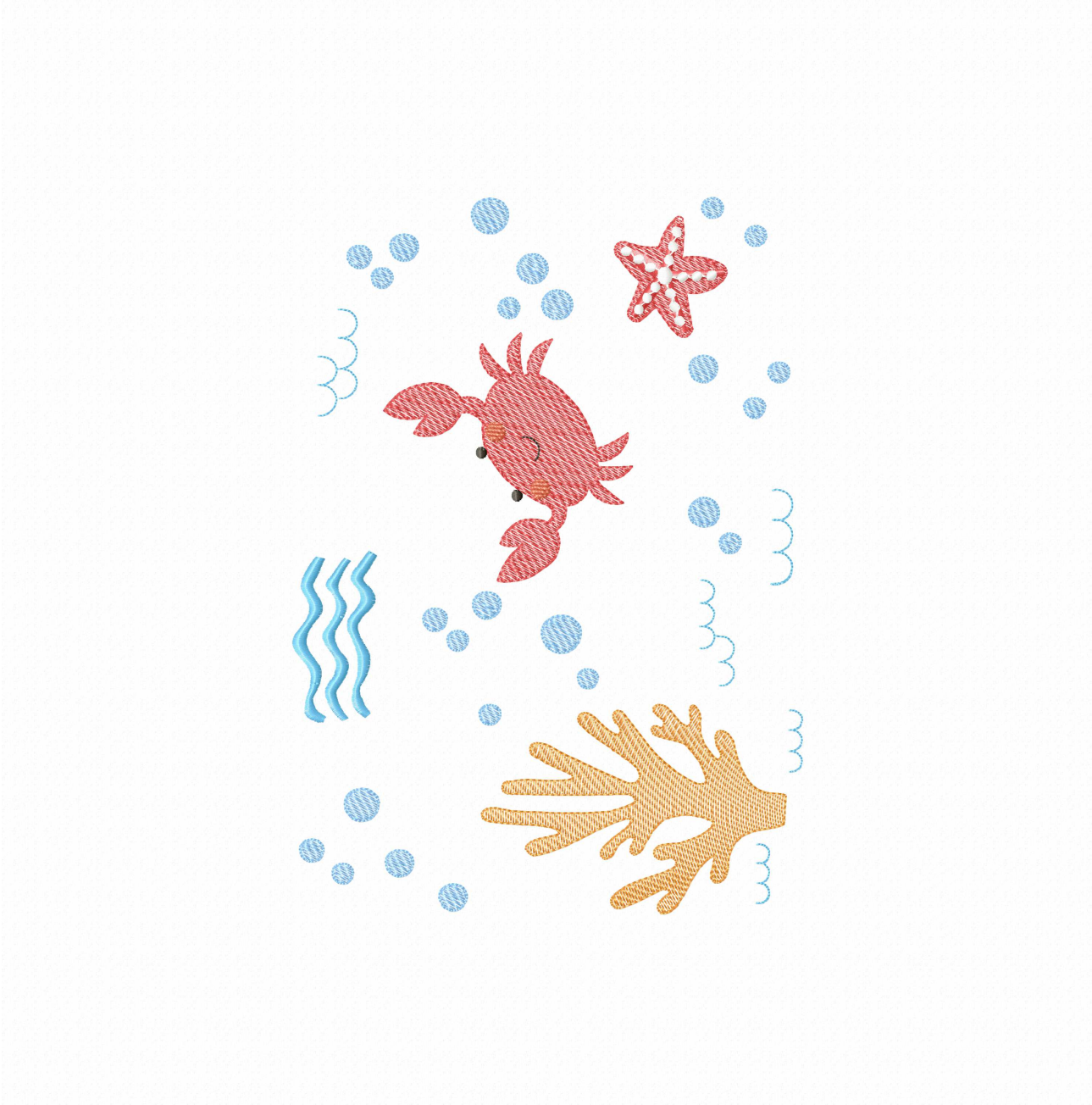


Histogram

- (3498) Stop 1
- (5261) Stop 2
- (8845) Stop 3
- (9239) Stop 4
- (9352) Stop 5
- (9479) Stop 6
- (13377) End

Title: MikaMoka Fundo Mar Catex5_16

Stitches ratio diagram:



Needle Thread consumption

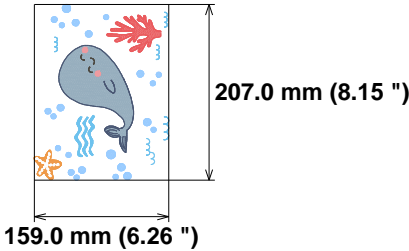
1	2718 st.	36.5% (15.8 m)
2	668 st.	5.3% (2.3 m)
3	117 st.	1.0% (0.5 m)
4	2352 st.	13.1% (5.7 m)
5	160 st.	0.9% (0.4 m)
6	1116 st.	10.0% (4.3 m)
7	355 st.	2.8% (1.2 m)
8	2987 st.	16.7% (7.2 m)
9	1733 st.	13.7% (5.9 m)

Upper thread	43.2 m
Bobbin	14.4 m

File: 6_16.PES (Babylock, Bernina, Brother #PES0060)
Design name: MikaMoka Fundo Mar Catex6_16
Stitches: 12206
Size: 159.0 x 207.0 mm (6.26 x 8.15 ")
Begin: 79.5, 103.5 mm
End: 79.5, 103.5 mm
Start needle: 1
Colors: 9/9 , Stops: 8
Date: 06-11-23

This area is reserved for your logo. Place logo.bmp file (width: 1442 , height: 474 pixels) in the same folder as embird.exe file.

This area is reserved for your address information. Place address.txt text file containing your address in the same folder as embird.exe file.

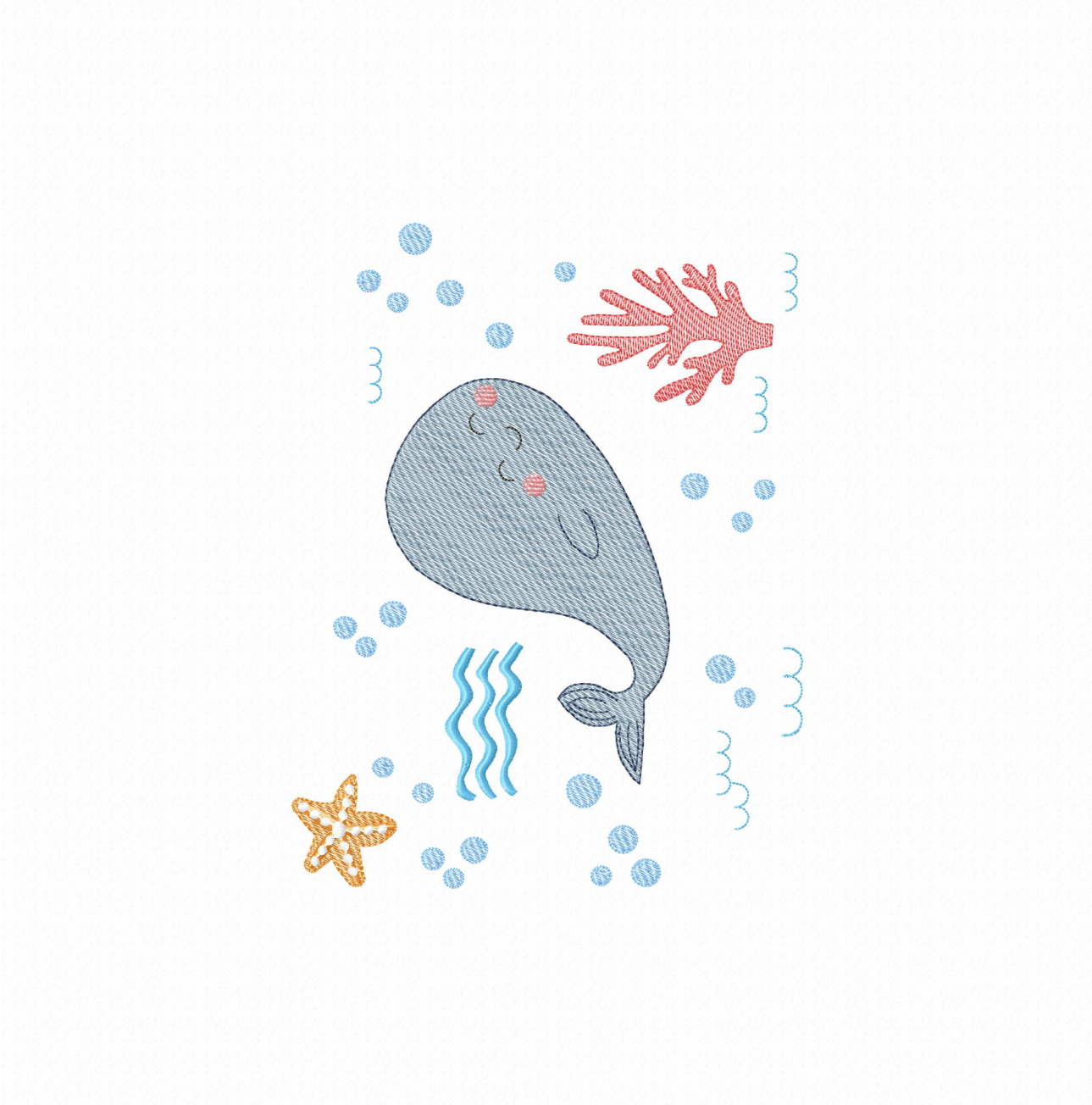


Histogram

(2719)	Stop 1
(3387)	Stop 2
(3504)	Stop 3
(5856)	Stop 4
(6016)	Stop 5
(7132)	Stop 6
(7487)	Stop 7
(10474)	Stop 8
(12206)	End

Title: MikaMoka Fundo Mar Catex6_16

Stitches ratio diagram:



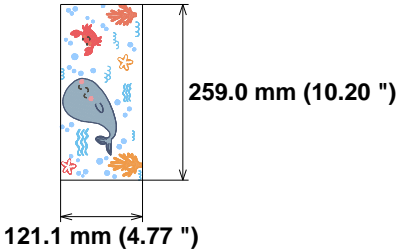
Needle	Thread consumption
1 2219 st.	24.5% (12.6 m)
2 596 st.	3.9% (2.0 m)
3 101 st.	0.7% (0.4 m)
4 2513 st.	12.7% (6.6 m)
5 2158 st.	13.5% (7.0 m)
6 571 st.	3.6% (1.9 m)
7 3696 st.	18.7% (9.7 m)
8 2118 st.	13.1% (6.8 m)
9 1667 st.	7.3% (3.8 m)
10 268 st.	1.8% (0.9 m)

Upper thread	51.6 m
Bobbin	17.2 m

File: 6G_16.PES (Babylock, Bernina, Brother #PES0060)
 Design name: MikaMoka Fundo Mar Catex6G_16
 Stitches: 15907
 Size: 121.1 x 259.0 mm (4.77 x 10.20 ")
 Begin: 60.5, 129.5 mm
 End: 60.5, 129.5 mm
 Start needle: 1
 Colors: 10/10 , Stops: 9
 Date: 06-11-23

This area is reserved for
 your logo. Place logo.bmp
 file (width: 1442 , height: 474 pixels)
 in the same folder as
 embird.exe file.

This area is reserved for
 your address information.
 Place address.txt text file
 containing your address in the
 same folder as embird.exe
 file.



Histogram

(2220)	Stop 1
(2816)	Stop 2
(2917)	Stop 3
(5430)	Stop 4
(7588)	Stop 5
(8159)	Stop 6
(11855)	Stop 7
(13973)	Stop 8
(15640)	Stop 9
(15907)	End

Title: MikaMoka Fundo Mar Catex6G_16

Stitches ratio diagram:

