

Needle Thread consumption

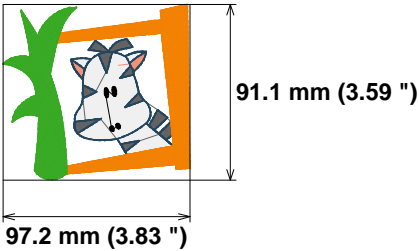
1	2437 st.	21.5% (11.9 m)
2	217 st.	1.1% (0.6 m)
3	981 st.	5.4% (3.0 m)
4	126 st.	0.7% (0.4 m)
5	1125 st.	10.1% (5.6 m)
6	2336 st.	22.6% (12.5 m)
7	1024 st.	12.1% (6.7 m)
8	2034 st.	18.0% (9.9 m)
9	799 st.	8.5% (4.7 m)

Upper thread	55.2 m
Bobbin	18.4 m

File: bichinhos ... (1) (Babylock, Bernina, Brother #PES0001)  
Stitches: 11079  
Size: 97.2 x 91.1 mm (3.83 x 3.59 ")  
Begin: 48.6, 45.6 mm  
End: 18.8, 33.0 mm  
Start needle: 1  
Colors: 7/9 , Stops: 8  
Date: 06-11-23

This area is reserved for your logo. Place logo.bmp file (width: 1442 , height: 474 pixels) in the same folder as embird.exe file.

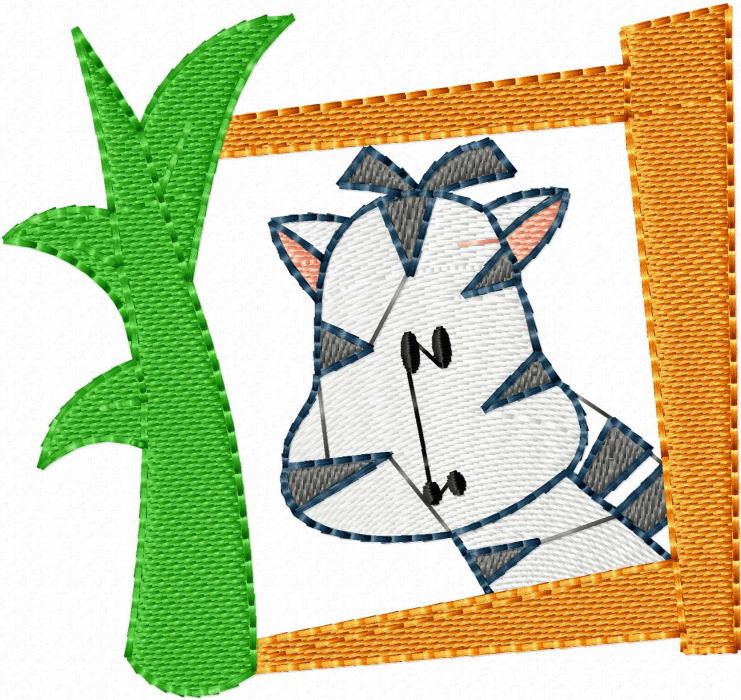
This area is reserved for your address information. Place address.txt text file containing your address in the same folder as embird.exe file.



Histogram

Stitches ratio diagram:

- ( 2438 ) Stop 1
- ( 2655 ) Stop 2
- ( 3636 ) Stop 3
- ( 3762 ) Stop 4
- ( 4887 ) Stop 5
- ( 7223 ) Stop 6
- ( 8247 ) Stop 7
- ( 10281 ) Stop 8
- ( 11079 ) End



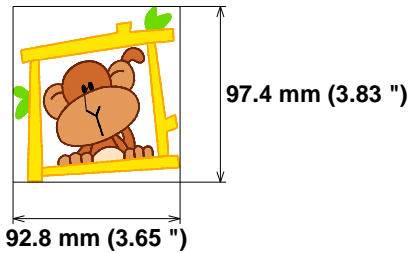
Needle	Thread consumption
1 240 st.	4.5% (2.4 m)
2 1264 st.	11.1% (5.9 m)
3 244 st.	1.9% (1.0 m)
4 2607 st.	24.5% (13.0 m)
5 140 st.	1.1% (0.6 m)
6 1472 st.	12.4% (6.6 m)
7 3383 st.	30.4% (16.1 m)
8 1187 st.	14.1% (7.5 m)

Upper thread 53.0 m  
 Bobbin 17.7 m

File: bichinhos ... (2) (Babylock, Bernina, Brother #PES0001)  
 Stitches: 10537  
 Size: 92.8 x 97.4 mm (3.65 x 3.83 ")  
 Begin: 46.4, 48.7 mm  
 End: 89.0, 84.9 mm  
 Start needle: 1  
 Colors: 8/8 , Stops: 7  
 Date: 06-11-23

This area is reserved for your logo. Place logo.bmp file (width: 1442 , height: 474 pixels) in the same folder as embird.exe file.

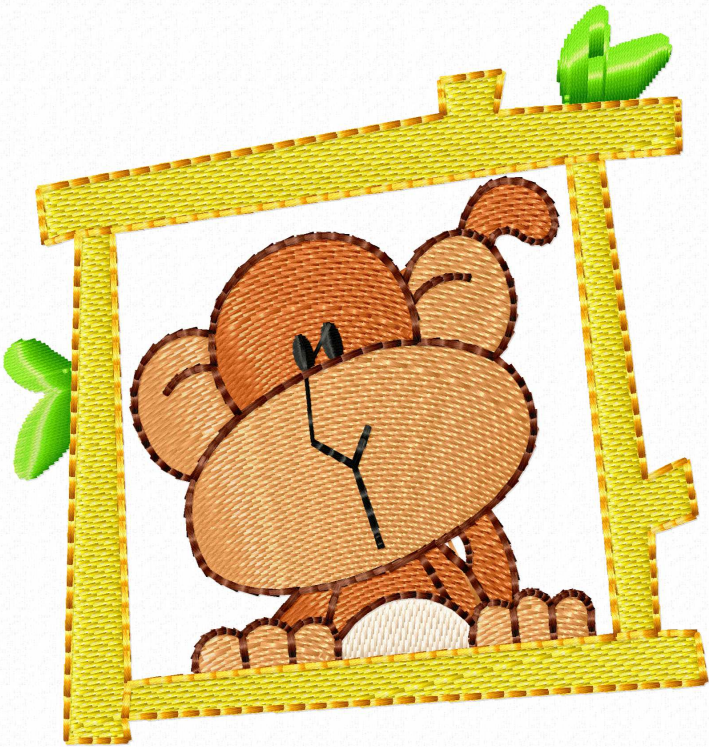
This area is reserved for your address information. Place address.txt text file containing your address in the same folder as embird.exe file.



### Histogram

- ( 241 ) Stop 1
- ( 1505 ) Stop 2
- ( 1749 ) Stop 3
- ( 4356 ) Stop 4
- ( 4496 ) Stop 5
- ( 5968 ) Stop 6
- ( 9351 ) Stop 7
- ( 10537 ) End

Stitches ratio diagram:





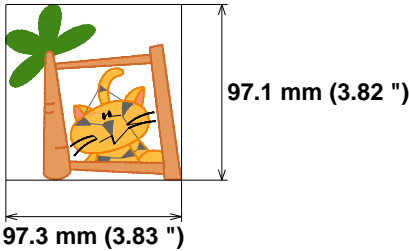
Needle	Thread consumption
1 2481 st.	23.3% (11.0 m)
2 202 st.	1.2% (0.6 m)
3 496 st.	3.2% (1.5 m)
4 753 st.	7.7% (3.6 m)
5 2818 st.	28.9% (13.6 m)
6 1356 st.	13.8% (6.5 m)
7 495 st.	5.5% (2.6 m)
8 1134 st.	13.9% (6.5 m)
9 227 st.	2.4% (1.1 m)

Upper thread	47.1 m
Bobbin	15.7 m

File: bichinhos ... (4) (Babylock, Bernina, Brother #PES0001)  
 Stitches: 9962  
 Size: 97.3 x 97.1 mm (3.83 x 3.82 ")  
 Begin: 48.6, 48.6 mm  
 End: 54.4, 36.9 mm  
 Start needle: 1  
 Colors: 8/9 , Stops: 8  
 Date: 06-11-23

This area is reserved for  
 your logo. Place logo.bmp  
 file (width: 1442 , height: 474 pixels)  
 in the same folder as  
 embird.exe file.

This area is reserved for  
 your address information.  
 Place address.txt text file  
 containing your address in the  
 same folder as embird.exe  
 file.



# Histogram

Stitches ratio diagram:



- ( 2482 ) Stop 1
- ( 2684 ) Stop 2
- ( 3180 ) Stop 3
- ( 3933 ) Stop 4
- ( 6751 ) Stop 5
- ( 8107 ) Stop 6
- ( 8602 ) Stop 7
- ( 9736 ) Stop 8
- ( 9962 ) End

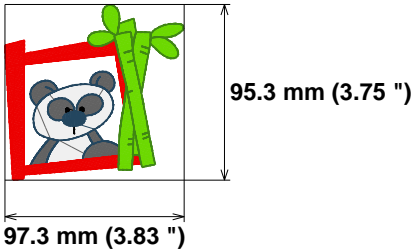


Needle	Thread consumption
1 2323 st.	19.4% (10.9 m)
2 1571 st.	13.5% (7.5 m)
3 1312 st.	10.6% (6.0 m)
4 74 st.	0.5% (0.3 m)
5 1052 st.	9.8% (5.5 m)
6 1066 st.	12.4% (6.9 m)
7 2407 st.	21.6% (12.1 m)
8 1339 st.	12.2% (6.8 m)
Upper thread	55.9 m
Bobbin	18.6 m

**File:** bichinhos ... (5) (Babylock, Bernina, Brother #PES0001)  
**Stitches:** 11144  
**Size:** 97.3 x 95.3 mm (3.83 x 3.75 ")  
**Begin:** 48.6, 47.7 mm  
**End:** 62.3, 24.0 mm  
**Start needle:** 1  
**Colors:** 7/8 , **Stops:** 7  
**Date:** 06-11-23

This area is reserved for your logo. Place logo.bmp file (width: 1442 , height: 474 pixels) in the same folder as embird.exe file.

This area is reserved for your address information. Place address.txt text file containing your address in the same folder as embird.exe file.



### Histogram

- ( 2324 ) Stop 1
- ( 3895 ) Stop 2
- ( 5207 ) Stop 3
- ( 5281 ) Stop 4
- ( 6333 ) Stop 5
- ( 7399 ) Stop 6
- ( 9806 ) Stop 7
- ( 11144 ) End

Stitches ratio diagram:



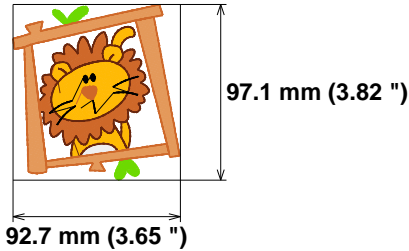


Needle	Thread consumption
1 228 st.	3.6% (2.2 m)
2 2874 st.	21.9% (13.0 m)
3 2413 st.	17.8% (10.6 m)
4 228 st.	1.3% (0.8 m)
5 1691 st.	11.6% (6.9 m)
6 210 st.	1.9% (1.1 m)
7 3253 st.	26.7% (15.8 m)
8 1377 st.	15.2% (9.0 m)
Upper thread	59.4 m
Bobbin	19.8 m

File: bichinhos ... (6) (Babylock, Bernina, Brother #PES0001)  
 Stitches: 12274  
 Size: 92.7 x 97.1 mm (3.65 x 3.82 ")  
 Begin: 46.3, 48.6 mm  
 End: 42.8, 51.9 mm  
 Start needle: 1  
 Colors: 7/8 , Stops: 7  
 Date: 06-11-23

This area is reserved for  
 your logo. Place logo.bmp  
 file (width: 1442 , height: 474 pixels)  
 in the same folder as  
 embird.exe file.

This area is reserved for  
 your address information.  
 Place address.txt text file  
 containing your address in the  
 same folder as embird.exe  
 file.



# Histogram

- ( 229 ) Stop 1
- ( 3103 ) Stop 2
- ( 5516 ) Stop 3
- ( 5744 ) Stop 4
- ( 7435 ) Stop 5
- ( 7645 ) Stop 6
- ( 10898 ) Stop 7
- ( 12274 ) End

Stitches ratio diagram:



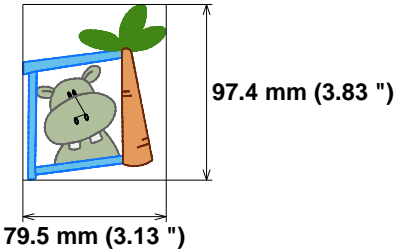
Needle	Thread consumption
1 1333 st.	14.6% (6.2 m)
2 2312 st.	27.6% (11.7 m)
3 161 st.	0.9% (0.4 m)
4 157 st.	1.1% (0.5 m)
5 780 st.	8.8% (3.7 m)
6 875 st.	13.6% (5.8 m)
7 1123 st.	12.9% (5.5 m)
8 1058 st.	10.9% (4.6 m)
9 386 st.	4.6% (2.0 m)
10 392 st.	4.9% (2.1 m)

Upper thread	42.4 m
Bobbin	14.1 m

File: bichinhos ... (7) (Babylock, Bernina, Brother #PES0001)  
 Stitches: 8577  
 Size: 79.5 x 97.4 mm (3.13 x 3.83 ")  
 Begin: 39.7, 48.7 mm  
 End: 55.1, 71.9 mm  
 Start needle: 1  
 Colors: 9/10 , Stops: 9  
 Date: 06-11-23

This area is reserved for your logo. Place logo.bmp file (width: 1442 , height: 474 pixels) in the same folder as embird.exe file.

This area is reserved for your address information. Place address.txt text file containing your address in the same folder as embird.exe file.

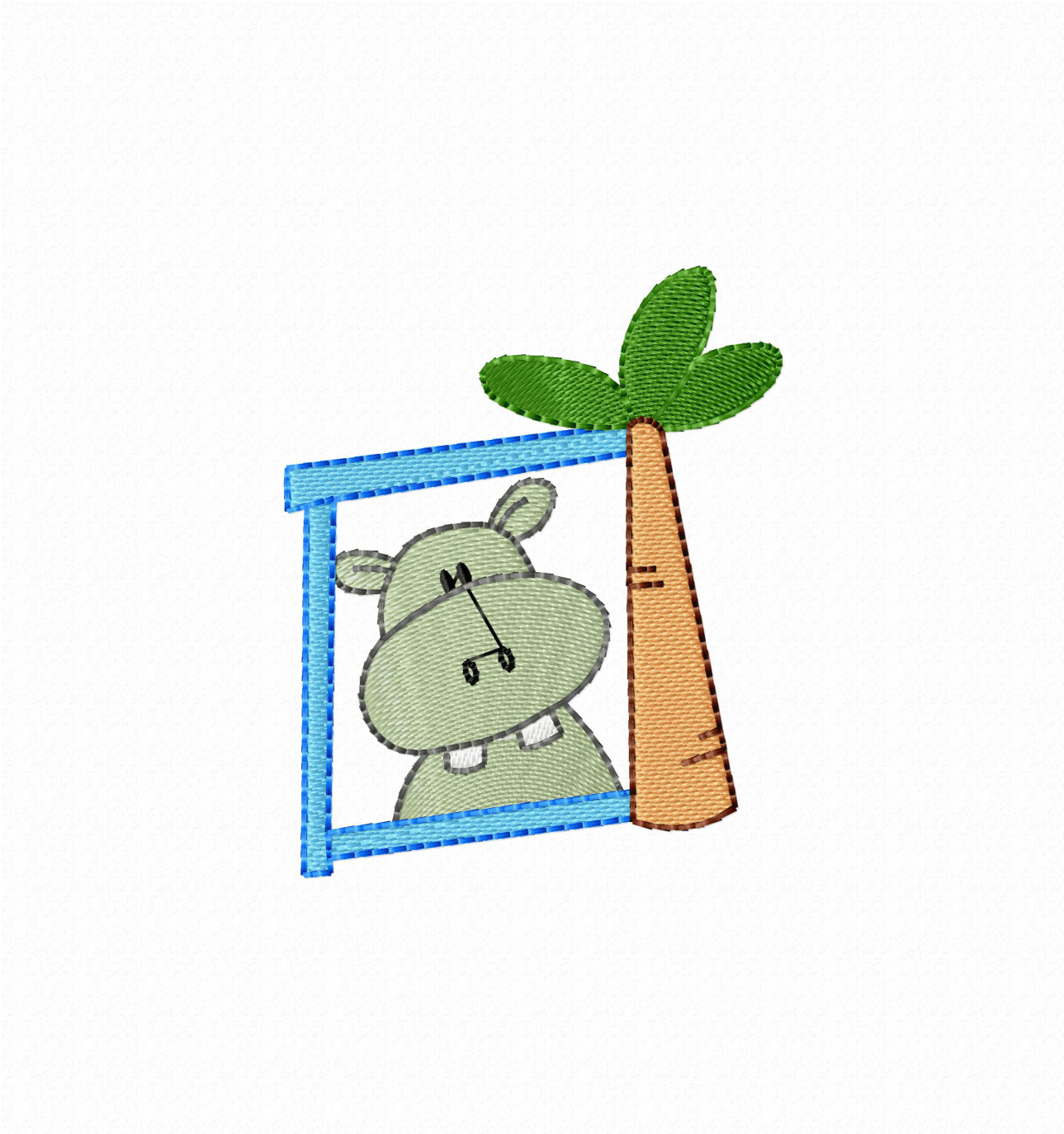


# Histogram

Stitches ratio diagram:



- ( 1334 ) Stop 1
- ( 3646 ) Stop 2
- ( 3807 ) Stop 3
- ( 3964 ) Stop 4
- ( 4744 ) Stop 5
- ( 5619 ) Stop 6
- ( 6742 ) Stop 7
- ( 7800 ) Stop 8
- ( 8186 ) Stop 9
- ( 8577 ) End





Needle Thread consumption

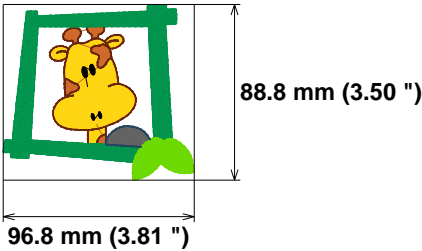
1	2434 st.	23.4% (12.1 m)
2	608 st.	4.1% (2.1 m)
3	1126 st.	8.3% (4.3 m)
4	156 st.	0.9% (0.5 m)
5	352 st.	3.0% (1.5 m)
6	3503 st.	32.2% (16.7 m)
7	1300 st.	15.8% (8.2 m)
8	1129 st.	11.2% (5.8 m)
9	116 st.	1.1% (0.6 m)

Upper thread	51.9 m
Bobbin	17.3 m

File: bichinhos ... (8) (Babylock, Bernina, Brother #PES0001)  
Stitches: 10724  
Size: 96.8 x 88.8 mm (3.81 x 3.50 ")  
Begin: 48.4, 44.4 mm  
End: 74.4, 20.4 mm  
Start needle: 1  
Colors: 8/9 , Stops: 8  
Date: 06-11-23

This area is reserved for your logo. Place logo.bmp file (width: 1442 , height: 474 pixels) in the same folder as embird.exe file.

This area is reserved for your address information. Place address.txt text file containing your address in the same folder as embird.exe file.



Histogram

- ( 2435 ) Stop 1
- ( 3043 ) Stop 2
- ( 4169 ) Stop 3
- ( 4325 ) Stop 4
- ( 4677 ) Stop 5
- ( 8180 ) Stop 6
- ( 9480 ) Stop 7
- ( 10609 ) Stop 8
- ( 10724 ) End

Stitches ratio diagram:

