

Production Worksheet

Wilcom TrueSizer

Cm564_48

Design: **Cm564_48**

Title:

Stitches: 25,788
 Height: 115.6 mm
 Width: 115.6 mm
 Colors: 9
 Colorway: Colorway 1
 Zoom: 1.26

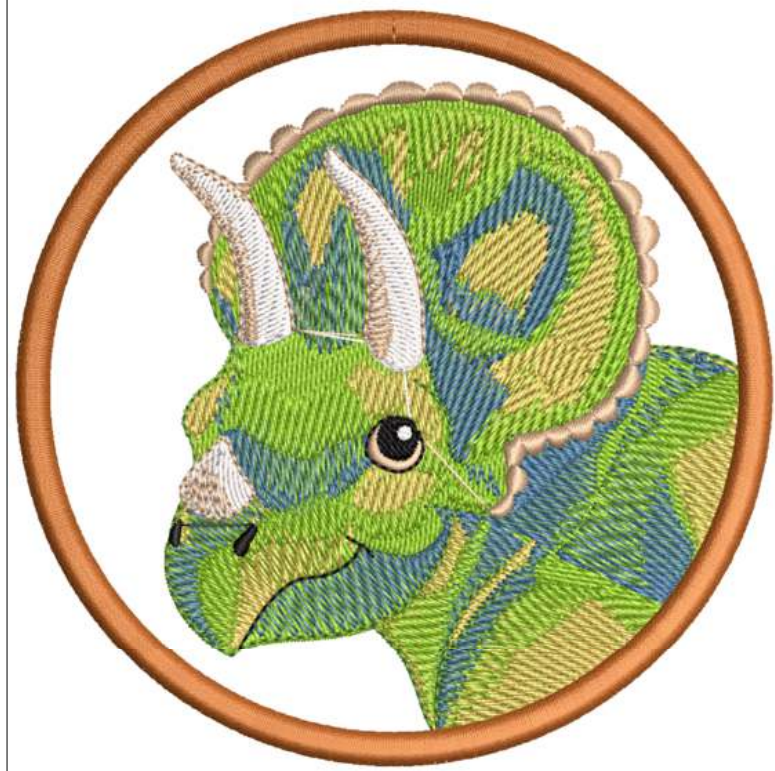
Machine format: Janome
 Color changes: 12
 Stops: 13
 Trims: 19
 Auto fabric: Fabric Name
 Required stabilizer: Stabilizer
 Appliqués: 0
 Total thread: 148.37m
 Total bobbin: 56.59m

Stop Sequence:

| # | # | Color | St. | Code | Name |
|-----|----|-------|--------|------|--------------|
| 1. | 16 | ■ | 192 | 254 | Hazel |
| 2. | 17 | ■ | 540 | 252 | Dark Gray |
| 3. | 18 | ■ | 11,391 | 218 | Yellow Green |
| 4. | 19 | ■ | 2,304 | 003 | Gold |
| 5. | 20 | ■ | 2,521 | 231 | Slate Blue |
| 6. | 18 | ■ | 1,996 | 218 | Yellow Green |
| 7. | 21 | ■ | 472 | 269 | Meadow |
| 8. | 22 | ■ | 1,234 | 213 | Beige |
| 9. | 23 | ■ | 1,564 | 001 | White |
| 10. | 22 | ■ | 315 | 213 | Beige |
| 11. | 24 | ■ | 376 | 002 | Black |
| 12. | 22 | ■ | 324 | 213 | Beige |
| 13. | 16 | ■ | 2,557 | 254 | Hazel |

Thread usage: 147.06m

| # | Color | Name | Length |
|-----|-------|--------------|--------|
| 16. | 15 | Hazel | 22.03m |
| 17. | 16 | Dark Gray | 2.48m |
| 18. | 17 | Yellow Green | 78.29m |
| 19. | 18 | Gold | 11.99m |
| 20. | 19 | Slate Blue | 13.13m |
| 21. | 20 | Meadow | 2.06m |
| 22. | 21 | Beige | 8.37m |
| 23. | 22 | White | 7.31m |
| 24. | 23 | Black | 1.41m |



Production Worksheet

Wilcom TrueSizer

Cm565_48

Design: **Cm565_48**

Title:

Stitches: 25,085
 Height: 114.5 mm
 Width: 115.0 mm
 Colors: 11
 Colorway: Colorway 1
 Zoom: 1.28

Machine format: Janome
 Color changes: 15
 Stops: 16
 Trims: 16
 Auto fabric: Fabric Name
 Required stabilizer: Stabilizer
 Appliqués: 0
 Total thread: 137.17m
 Total bobbin: 50.61m

Stop Sequence:

| # | # | Color | St. | Code | Name |
|-----|----|-------|-------|------|--------------|
| 1. | 16 | ■ | 192 | 206 | Bright Green |
| 2. | 17 | ■ | 361 | 218 | Yellow Green |
| 3. | 18 | ■ | 722 | 236 | Cinnamon |
| 4. | 19 | ■ | 921 | 213 | Beige |
| 5. | 20 | ■ | 214 | 001 | White |
| 6. | 21 | ■ | 177 | 270 | Mustard |
| 7. | 20 | ■ | 1,473 | 001 | White |
| 8. | 19 | ■ | 4,146 | 213 | Beige |
| 9. | 20 | ■ | 3,973 | 001 | White |
| 10. | 19 | ■ | 3,352 | 213 | Beige |
| 11. | 22 | ■ | 1,875 | 268 | Olive Drab |
| 12. | 23 | ■ | 1,713 | 221 | Gray |
| 13. | 24 | ■ | 2,552 | 252 | Dark Gray |
| 14. | 25 | ■ | 421 | 002 | Black |
| 15. | 26 | ■ | 334 | 205 | Dark Brown |
| 16. | 16 | ■ | 2,657 | 206 | Bright Green |

Thread usage: 135.56m

| # | Color | Name | Length |
|-----|-------|--------------|--------|
| 16. | 15 | Bright Green | 20.55m |
| 17. | 16 | Yellow Green | 1.66m |
| 18. | 17 | Cinnamon | 2.96m |
| 19. | 18 | Beige | 47.29m |
| 20. | 19 | White | 29.66m |
| 21. | 20 | Mustard | 0.69m |
| 22. | 21 | Olive Drab | 9.22m |
| 23. | 22 | Gray | 8.13m |
| 24. | 23 | Dark Gray | 12.32m |
| 25. | 24 | Black | 1.69m |
| 26. | 25 | Dark Brown | 1.39m |



Production Worksheet

Wilcom TrueSizer

Cm566_48

Design: **Cm566_48**

Title:

Stitches: 20,490
 Height: 114.5 mm
 Width: 115.0 mm
 Colors: 12
 Colorway: Colorway 1
 Zoom: 1.29

Machine format: Janome
 Color changes: 13
 Stops: 14
 Trims: 15
 Auto fabric: Fabric Name
 Required stabilizer: Stabilizer
 Appliqués: 0
 Total thread: 108.70m
 Total bobbin: 39.30m

Stop Sequence:

| # | # | Color | St. | Code | Name |
|-----|----|-------|-------|------|--------------|
| 1. | 16 | ■ | 192 | 273 | Honey Dew |
| 2. | 17 | ■ | 361 | 239 | Sunflower |
| 3. | 18 | ■ | 115 | 270 | Mustard |
| 4. | 19 | ■ | 1,617 | 255 | Toast |
| 5. | 20 | ■ | 482 | 001 | White |
| 6. | 21 | ■ | 4,843 | 268 | Olive Drab |
| 7. | 22 | ■ | 1,829 | 252 | Dark Gray |
| 8. | 23 | ■ | 1,209 | 205 | Dark Brown |
| 9. | 24 | ■ | 1,319 | 231 | Slate Blue |
| 10. | 25 | ■ | 240 | 213 | Beige |
| 11. | 26 | ■ | 5,176 | 206 | Bright Green |
| 12. | 27 | ■ | 400 | 002 | Black |
| 13. | 20 | ■ | 50 | 001 | White |
| 14. | 16 | ■ | 2,655 | 273 | Honey Dew |

Thread usage: 107.30m

| # | Color | Name | Length |
|-----|-------|--------------|--------|
| 16. | ■ | Honey Dew | 20.55m |
| 17. | ■ | Sunflower | 1.66m |
| 18. | ■ | Mustard | 0.48m |
| 19. | ■ | Toast | 9.41m |
| 20. | ■ | White | 2.46m |
| 21. | ■ | Olive Drab | 28.78m |
| 22. | ■ | Dark Gray | 10.22m |
| 23. | ■ | Dark Brown | 6.05m |
| 24. | ■ | Slate Blue | 5.48m |
| 25. | ■ | Beige | 1.14m |
| 26. | ■ | Bright Green | 19.49m |
| 27. | ■ | Black | 1.56m |



Production Worksheet

Wilcom TrueSizer

Cm567_48

Design: **Cm567_48**

Title:

Stitches: 15,436
 Height: 115.4 mm
 Width: 75.7 mm
 Colors: 7
 Colorway: Colorway 1
 Zoom: 2.00

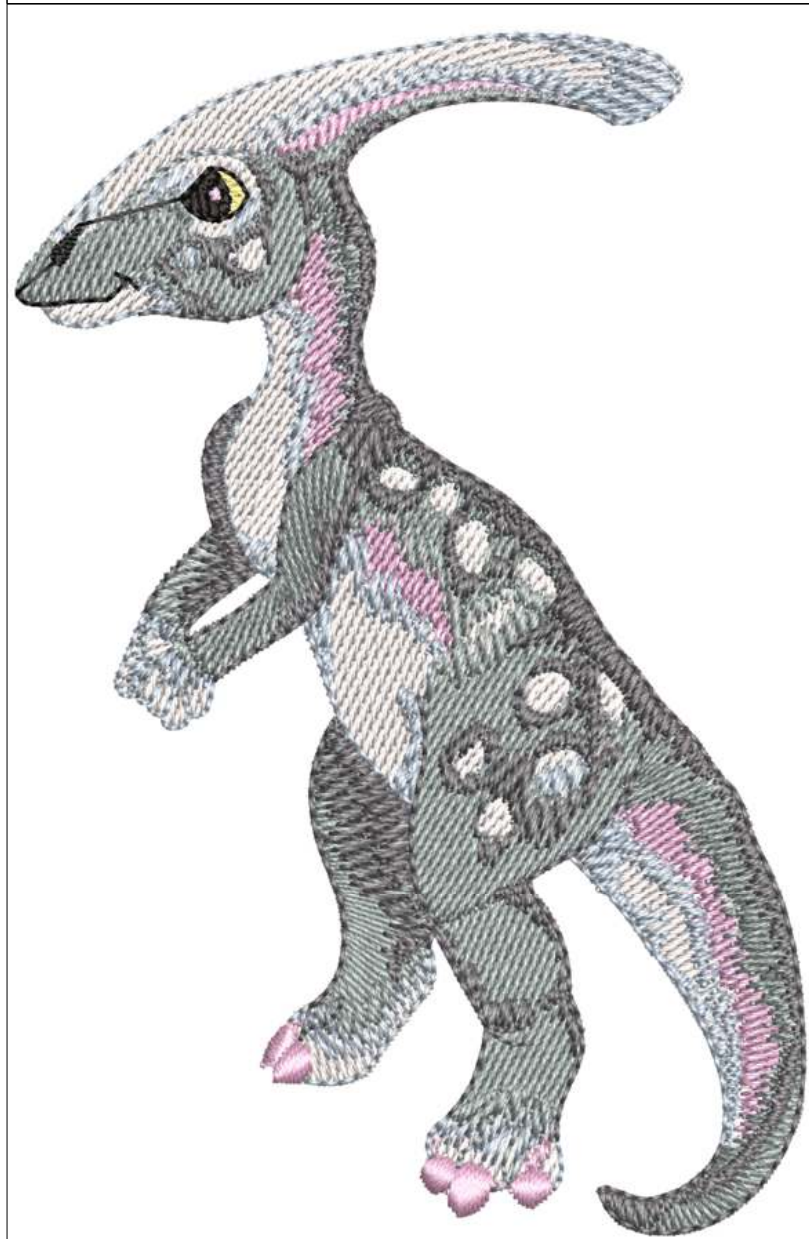
Machine format: Janome
 Color changes: 6
 Stops: 7
 Trims: 7
 Auto fabric: Fabric Name
 Required stabilizer: Stabilizer
 Appliqués: 0
 Total thread: 70.89m
 Total bobbin: 23.30m

Stop Sequence:

| # | # | Color | St. | Code | Name |
|----|----|-------|-------|------|-------------|
| 1. | 16 | ■ | 75 | 270 | Mustard |
| 2. | 17 | ■ | 3,663 | 001 | White |
| 3. | 18 | ■ | 1,337 | 240 | Orchid Pink |
| 4. | 19 | ■ | 1,802 | 216 | Pale Sky |
| 5. | 20 | ■ | 5,250 | 221 | Gray |
| 6. | 21 | ■ | 3,076 | 252 | Dark Gray |
| 7. | 22 | ■ | 231 | 002 | Black |

Thread usage: 70.19m

| # | Color | Name | Length |
|-----|-------|-------------|--------|
| 16. | ■ | Mustard | 0.26m |
| 17. | ■ | White | 18.26m |
| 18. | ■ | Orchid Pink | 6.22m |
| 19. | ■ | Pale Sky | 7.48m |
| 20. | ■ | Gray | 25.07m |
| 21. | ■ | Dark Gray | 12.08m |
| 22. | ■ | Black | 0.81m |



Production Worksheet

Wilcom TrueSizer

* **Cm568_48** *

Design: **Cm568_48**

Title:

Stitches: 9,024
 Height: 64.2 mm
 Width: 120.2 mm
 Colors: 6
 Colorway: Colorway 1
 Zoom: 1.28

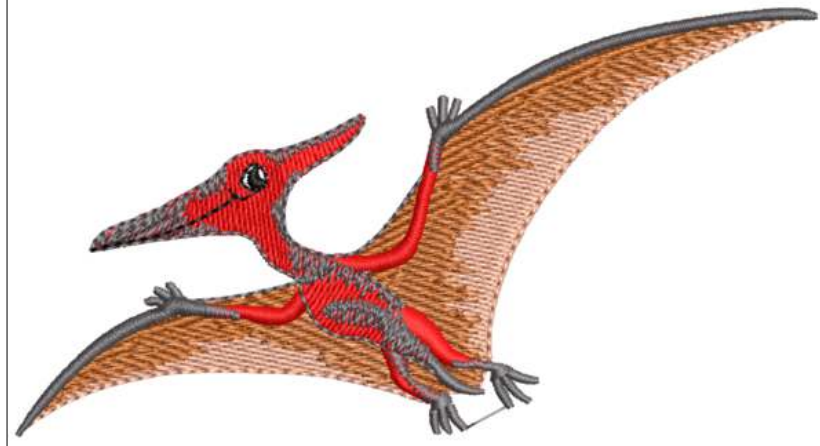
Machine format: Janome
 Color changes: 5
 Stops: 6
 Trims: 7
 Auto fabric: Fabric Name
 Required stabilizer: Stabilizer
 Appliqués: 0
 Total thread: 46.29m
 Total bobbin: 16.38m

Stop Sequence:

| # | # | Color | St. | Code | Name |
|----|----|-------|-------|------|-----------|
| 1. | 16 | | 3,341 | 236 | Cinnamon |
| 2. | 17 | | 1,559 | 254 | Hazel |
| 3. | 18 | | 1,744 | 225 | Red |
| 4. | 19 | | 2,228 | 252 | Dark Gray |
| 5. | 20 | | 41 | 001 | White |
| 6. | 21 | | 109 | 002 | Black |

Thread usage:

| # | Color | Name | Length |
|-----|-------|-----------|--------|
| 16. | | Cinnamon | 18.45m |
| 17. | | Hazel | 8.54m |
| 18. | | Red | 8.84m |
| 19. | | Dark Gray | 9.26m |
| 20. | | White | 0.15m |
| 21. | | Black | 0.44m |



Production Worksheet

Wilcom TrueSizer

* **Cm569_48** *

Design: **Cm569_48**

Title:

Stitches: 15,069
 Height: 80.7 mm
 Width: 116.2 mm
 Colors: 9
 Colorway: Colorway 1
 Zoom: 1.29

Machine format: Janome
 Color changes: 9
 Stops: 10
 Trims: 11
 Auto fabric: Fabric Name
 Required stabilizer: Stabilizer
 Appliqués: 0
 Total thread: 69.14m
 Total bobbin: 22.52m

Stop Sequence:

| # | # | Color | St. | Code | Name |
|-----|----|-------|-------|------|-------------|
| 1. | 16 | | 720 | 001 | White |
| 2. | 17 | | 3,709 | 213 | Beige |
| 3. | 18 | | 841 | 210 | Pale Yellow |
| 4. | 19 | | 2,799 | 239 | Sunflower |
| 5. | 20 | | 2,182 | 274 | Tangerine |
| 6. | 21 | | 366 | 221 | Gray |
| 7. | 22 | | 1,433 | 205 | Dark Brown |
| 8. | 23 | | 1,924 | 254 | Hazel |
| 9. | 24 | | 257 | 002 | Black |
| 10. | 17 | | 836 | 213 | Beige |

Thread usage:

| # | Color | Name | Length |
|-----|-------|-------------|--------|
| 16. | | White | 3.88m |
| 17. | | Beige | 23.94m |
| 18. | | Pale Yellow | 3.91m |
| 19. | | Sunflower | 12.20m |
| 20. | | Tangerine | 8.77m |
| 21. | | Gray | 1.50m |
| 22. | | Dark Brown | 5.39m |
| 23. | | Hazel | 7.61m |
| 24. | | Black | 0.93m |



Production Worksheet

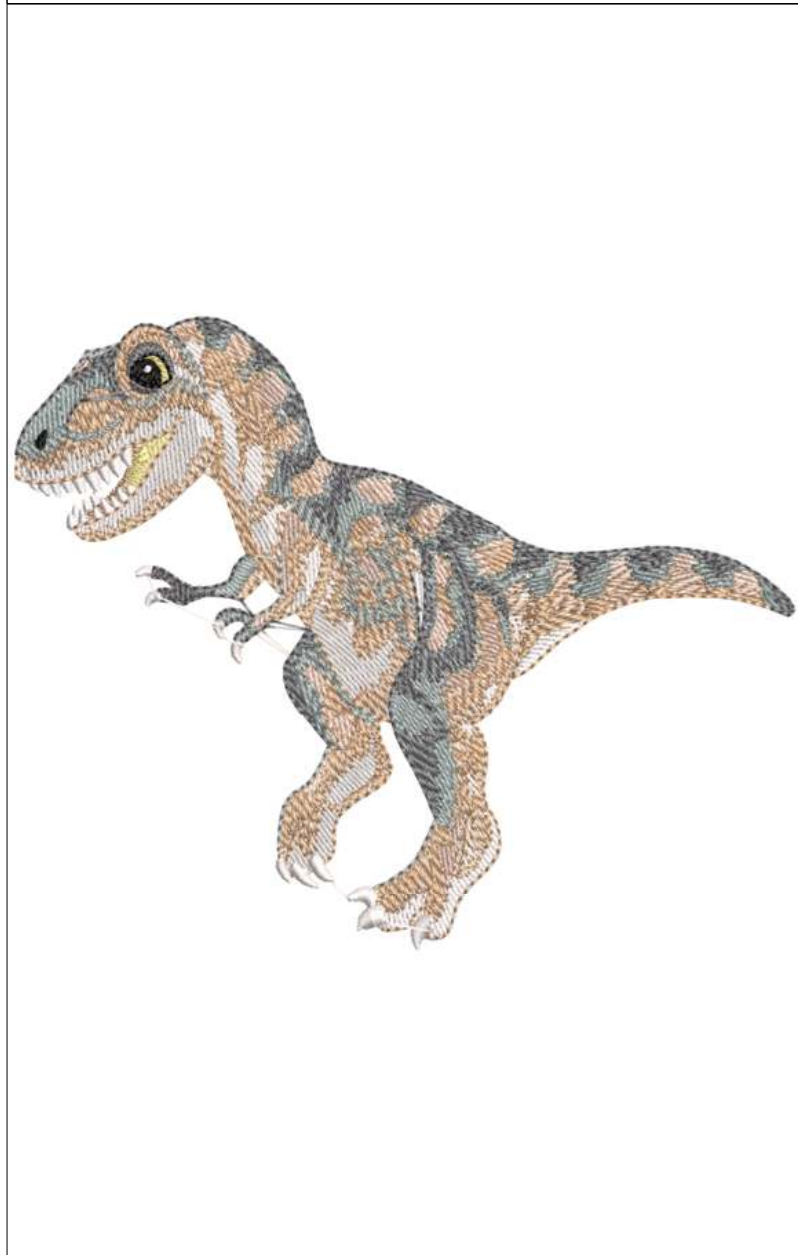
Wilcom TrueSizer

* **Cm570 48***

Design: **Cm570_48**

Title:

Stitches: 19,815
 Height: 108.2 mm
 Width: 133.3 mm
 Colors: 8
 Colorway: Colorway 1
 Zoom: 1.12



Machine format: Janome
 Color changes: 11
 Stops: 12
 Trims: 15
 Auto fabric: Fabric Name
 Required stabilizer: Stabilizer
 Appliqués: 0
 Total thread: 92.58m
 Total bobbin: 30.67m

Stop Sequence:

| # | # | Color | St. | Code | Name |
|-----|----|-------|-------|------|-------------|
| 1. | 16 | ■ | 200 | 213 | Beige |
| 2. | 17 | ■ | 209 | 210 | Pale Yellow |
| 3. | 18 | ■ | 479 | 001 | White |
| 4. | 19 | ■ | 83 | 270 | Mustard |
| 5. | 18 | ■ | 3,955 | 001 | White |
| 6. | 16 | ■ | 2,628 | 213 | Beige |
| 7. | 20 | ■ | 3,186 | 223 | Beige Gray |
| 8. | 16 | ■ | 2,849 | 213 | Beige |
| 9. | 21 | ■ | 3,538 | 221 | Gray |
| 10. | 22 | ■ | 2,033 | 252 | Dark Gray |
| 11. | 23 | ■ | 199 | 002 | Black |
| 12. | 18 | ■ | 454 | 001 | White |

Thread usage: 91.38m

| # | Color | Name | Length |
|-----|-------|-------------|--------|
| 16. | ■ | Beige | 25.24m |
| 17. | ■ | Pale Yellow | 0.75m |
| 18. | ■ | White | 24.25m |
| 19. | ■ | Mustard | 0.30m |
| 20. | ■ | Beige Gray | 15.48m |
| 21. | ■ | Gray | 16.41m |
| 22. | ■ | Dark Gray | 8.28m |
| 23. | ■ | Black | 0.68m |

Production Worksheet

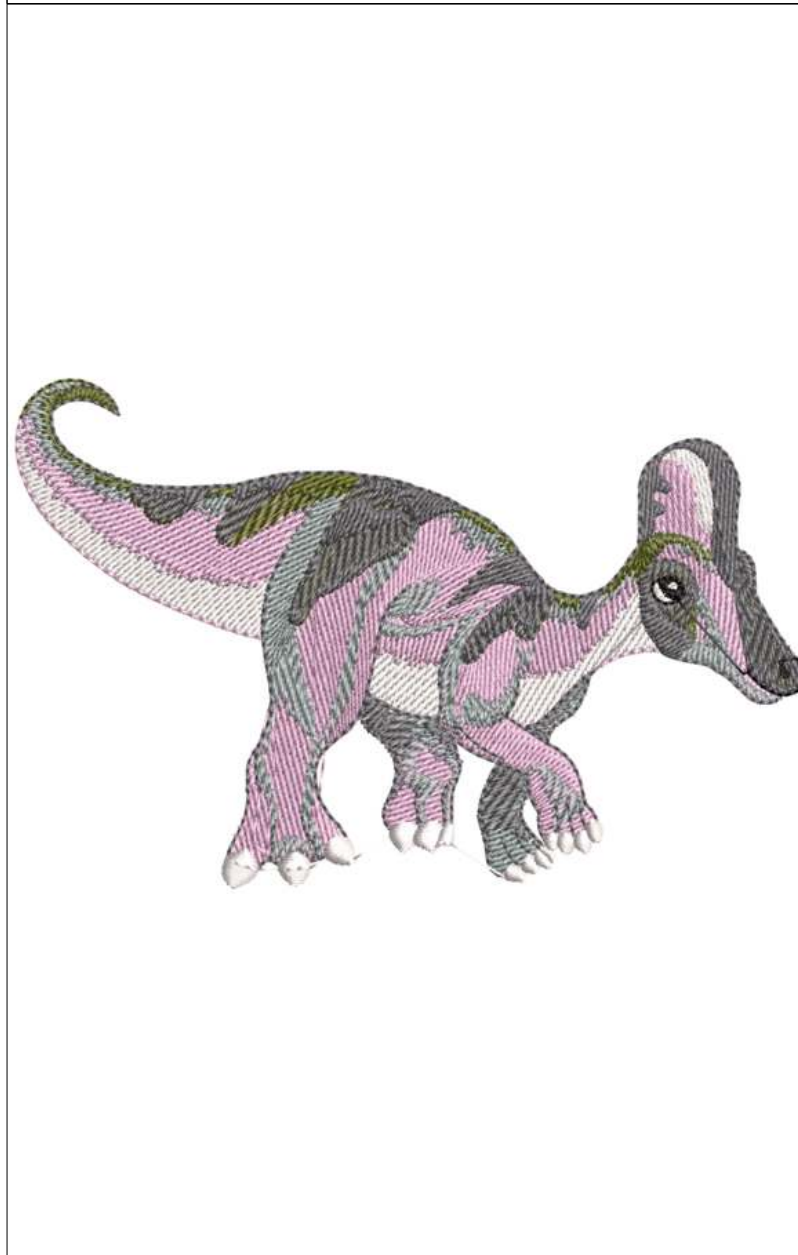
Wilcom TrueSizer

* **Cm571 48***

Design: **Cm571_48**

Title:

Stitches: 17,472
 Height: 84.0 mm
 Width: 130.5 mm
 Colors: 6
 Colorway: Colorway 1
 Zoom: 1.16



Machine format: Janome
 Color changes: 6
 Stops: 7
 Trims: 6
 Auto fabric: Fabric Name
 Required stabilizer: Stabilizer
 Appliqués: 0
 Total thread: 88.40m
 Total bobbin: 31.26m

Stop Sequence:

| # | # | Color | St. | Code | Name |
|----|----|-------|-------|------|-------------|
| 1. | 16 | ■ | 3,035 | 001 | White |
| 2. | 17 | ■ | 5,133 | 240 | Orchid Pink |
| 3. | 18 | ■ | 2,612 | 221 | Gray |
| 4. | 19 | ■ | 1,970 | 268 | Olive Drab |
| 5. | 20 | ■ | 3,972 | 252 | Dark Gray |
| 6. | 21 | ■ | 195 | 002 | Black |
| 7. | 16 | ■ | 553 | 001 | White |

Thread usage: 87.69m

| # | Color | Name | Length |
|-----|-------|-------------|--------|
| 16. | ■ | White | 19.35m |
| 17. | ■ | Orchid Pink | 28.31m |
| 18. | ■ | Gray | 12.17m |
| 19. | ■ | Olive Drab | 9.64m |
| 20. | ■ | Dark Gray | 17.56m |
| 21. | ■ | Black | 0.66m |

Production Worksheet

Wilcom TrueSizer

Cm572_48

Design: **Cm572_48**

Title:

Stitches: 26,339
 Height: 100.6 mm
 Width: 135.9 mm
 Colors: 8
 Colorway: Colorway 1
 Zoom: 1.10

Machine format: Janome
 Color changes: 9
 Stops: 10
 Trims: 15
 Auto fabric: Fabric Name
 Required stabilizer: Stabilizer
 Appliqués: 0
 Total thread: 135.73m
 Total bobbin: 48.62m

Stop Sequence:

| # | # | Color | St. | Code | Name |
|-----|----|-------|-------|------|------------|
| 1. | 16 | | 88 | 270 | Mustard |
| 2. | 17 | | 5,554 | 255 | Toast |
| 3. | 18 | | 1,444 | 001 | White |
| 4. | 19 | | 9,349 | 268 | Olive Drab |
| 5. | 20 | | 4,297 | 252 | Dark Gray |
| 6. | 21 | | 2,541 | 205 | Dark Brown |
| 7. | 22 | | 2,514 | 231 | Slate Blue |
| 8. | 23 | | 253 | 002 | Black |
| 9. | 17 | | 55 | 255 | Toast |
| 10. | 18 | | 242 | 001 | White |

Thread usage: 134.72m

| # | Color | Name | Length |
|-----|-------|------------|--------|
| 16. | | Mustard | 0.31m |
| 17. | | Toast | 32.29m |
| 18. | | White | 7.98m |
| 19. | | Olive Drab | 49.68m |
| 20. | | Dark Gray | 21.31m |
| 21. | | Dark Brown | 11.57m |
| 22. | | Slate Blue | 10.71m |
| 23. | | Black | 0.88m |



Production Worksheet

Wilcom TrueSizer

Cm573_48

Design: **Cm573_48**

Title:

Stitches: 21,776
 Height: 91.8 mm
 Width: 124.5 mm
 Colors: 8
 Colorway: Colorway 1
 Zoom: 1.18

Machine format: Janome
 Color changes: 10
 Stops: 11
 Trims: 13
 Auto fabric: Fabric Name
 Required stabilizer: Stabilizer
 Appliqués: 0
 Total thread: 106.79m
 Total bobbin: 36.82m

Stop Sequence:

| # | # | Color | St. | Code | Name |
|-----|----|-------|-------|------|--------------|
| 1. | 16 | | 9,591 | 218 | Yellow Green |
| 2. | 17 | | 2,667 | 003 | Gold |
| 3. | 18 | | 3,714 | 269 | Meadow |
| 4. | 16 | | 1,856 | 218 | Yellow Green |
| 5. | 19 | | 957 | 231 | Slate Blue |
| 6. | 20 | | 898 | 001 | White |
| 7. | 21 | | 978 | 213 | Beige |
| 8. | 22 | | 248 | 268 | Olive Drab |
| 9. | 23 | | 224 | 002 | Black |
| 10. | 21 | | 359 | 213 | Beige |
| 11. | 18 | | 282 | 269 | Meadow |

Thread usage: 105.69m

| # | Color | Name | Length |
|-----|-------|--------------|--------|
| 16. | | Yellow Green | 60.60m |
| 17. | | Gold | 12.19m |
| 18. | | Meadow | 17.88m |
| 19. | | Slate Blue | 4.14m |
| 20. | | White | 3.71m |
| 21. | | Beige | 5.28m |
| 22. | | Olive Drab | 1.04m |
| 23. | | Black | 0.84m |



Production Worksheet

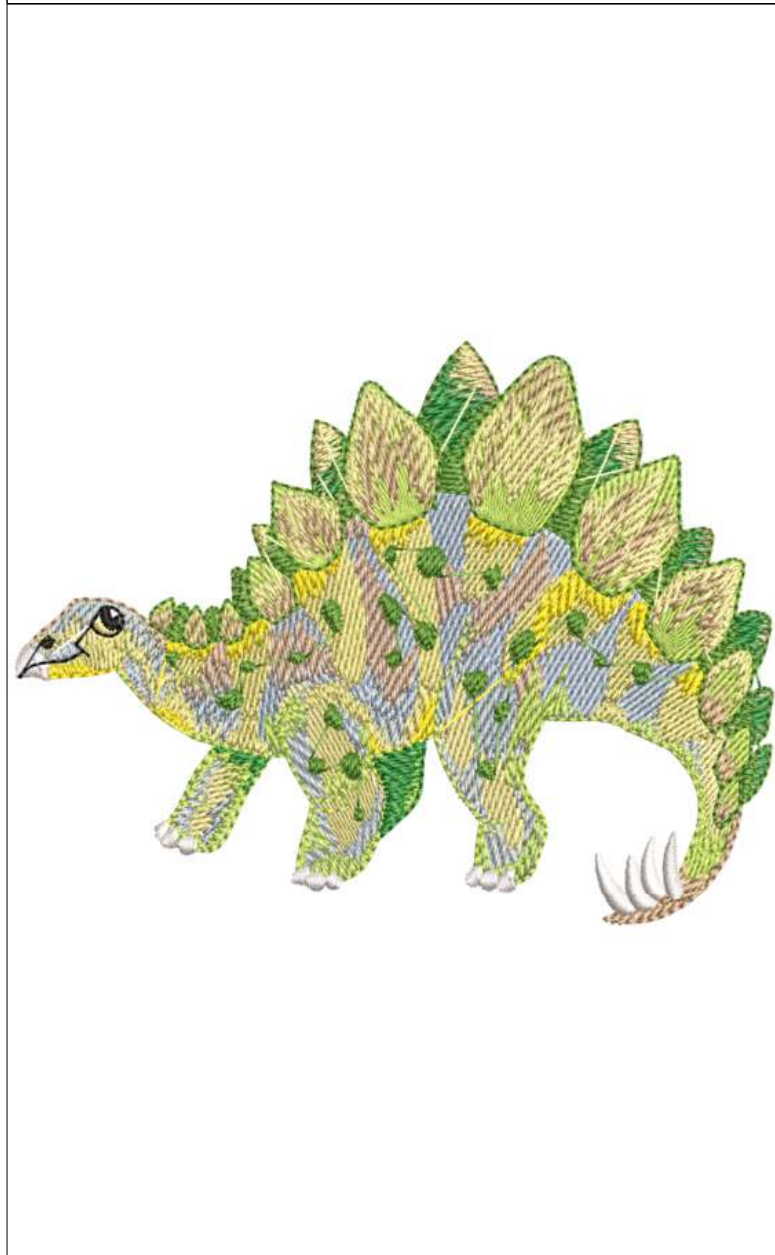
Wilcom TrueSizer

Cm574 48

Design: **Cm574_48**

Title:

Stitches: 22,970
 Height: 90.7 mm
 Width: 118.0 mm
 Colors: 10
 Colorway: Colorway 1
 Zoom: 1.23



Machine format: Janome
 Color changes: 11
 Stops: 12
 Trims: 22
 Auto fabric: Fabric Name
 Required stabilizer: Stabilizer
 Appliqués: 0
 Total thread: 114.27m
 Total bobbin: 39.78m

Stop Sequence:

| # | # | Color | St. | Code | Name |
|-----|----|-------|-------|------|---------------|
| 1. | 16 | □ | 3,921 | 210 | Pale Yellow |
| 2. | 17 | □ | 3,324 | 216 | Pale Sky |
| 3. | 18 | □ | 683 | 213 | Beige |
| 4. | 19 | □ | 2,107 | 270 | Mustard |
| 5. | 20 | □ | 703 | 275 | Canary Yellow |
| 6. | 21 | □ | 4,725 | 264 | Green Dust |
| 7. | 18 | □ | 1,941 | 213 | Beige |
| 8. | 22 | □ | 915 | 206 | Bright Green |
| 9. | 23 | □ | 2,981 | 269 | Meadow |
| 10. | 24 | □ | 640 | 001 | White |
| 11. | 25 | □ | 141 | 002 | Black |
| 12. | 16 | □ | 887 | 210 | Pale Yellow |

Thread usage: 113.06m

| # | Color | Name | Length |
|-----|-------|---------------|--------|
| 16. | 15 | Pale Yellow | 26.85m |
| 17. | 16 | Pale Sky | 17.13m |
| 18. | 17 | Beige | 12.47m |
| 19. | 18 | Mustard | 10.65m |
| 20. | 19 | Canary Yellow | 2.99m |
| 21. | 20 | Green Dust | 23.94m |
| 22. | 21 | Bright Green | 4.06m |
| 23. | 22 | Meadow | 11.58m |
| 24. | 23 | White | 2.87m |
| 25. | 24 | Black | 0.52m |

Production Worksheet

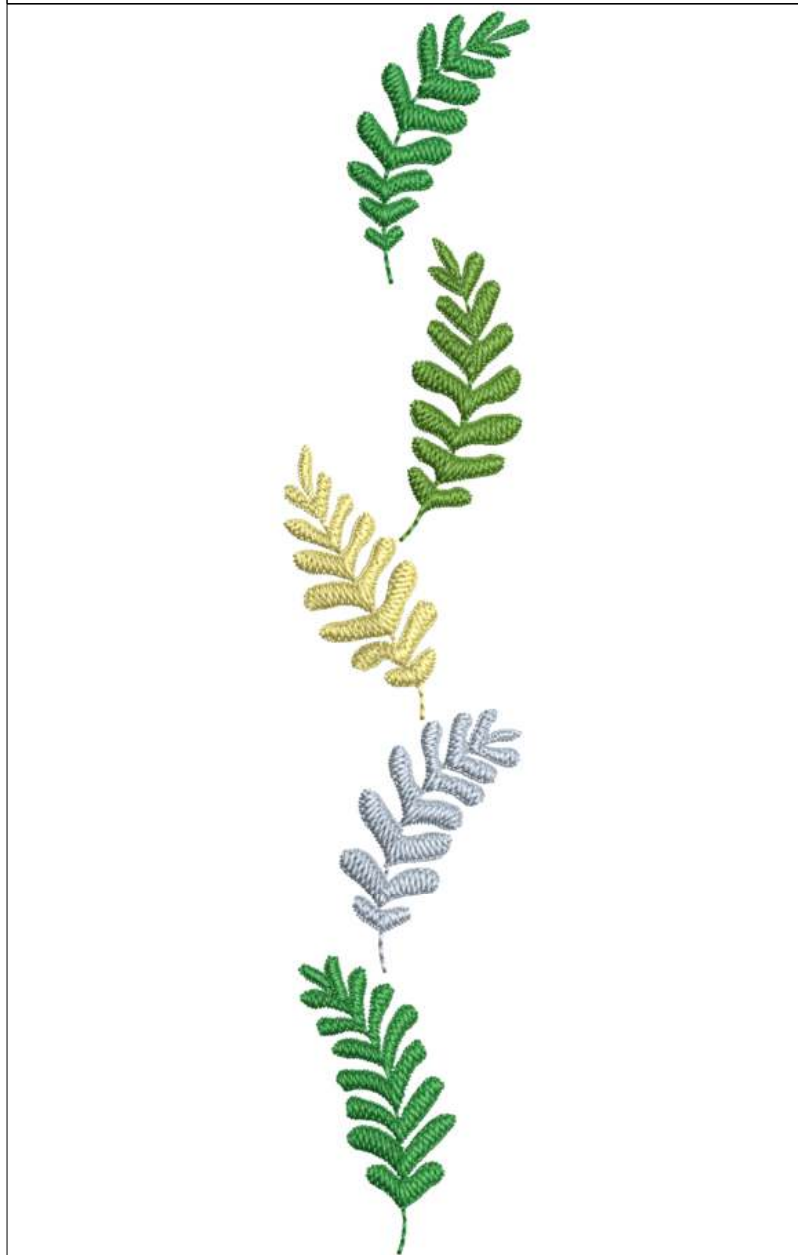
Wilcom TrueSizer

Cm575 48

Design: **Cm575_48**

Title:

Stitches: 7,528
 Height: 168.9 mm
 Width: 33.1 mm
 Colors: 4
 Colorway: Colorway 1
 Zoom: 1.41



Machine format: Janome
 Color changes: 4
 Stops: 5
 Trims: 4
 Auto fabric: Fabric Name
 Required stabilizer: Stabilizer
 Appliqués: 0
 Total thread: 27.21m
 Total bobbin: 6.91m

Stop Sequence:

| # | # | Color | St. | Code | Name |
|----|----|-------|-------|------|--------------|
| 1. | 16 | ■ | 1,519 | 206 | Bright Green |
| 2. | 17 | ■ | 1,481 | 269 | Meadow |
| 3. | 18 | □ | 1,454 | 270 | Mustard |
| 4. | 19 | □ | 1,452 | 216 | Pale Sky |
| 5. | 16 | ■ | 1,620 | 206 | Bright Green |

Thread usage: 26.71m

| # | Color | Name | Length |
|-----|-------|--------------|--------|
| 16. | 15 | Bright Green | 11.04m |
| 17. | 16 | Meadow | 5.34m |
| 18. | 17 | Mustard | 5.12m |
| 19. | 18 | Pale Sky | 5.21m |

Production Worksheet

Wilcom TrueSizer

Cm576 48

Design: **Cm576_48**

Title:

Stitches: 7,952
 Height: 68.4 mm
 Width: 89.1 mm
 Colors: 6
 Colorway: Colorway 1
 Zoom: 1.67

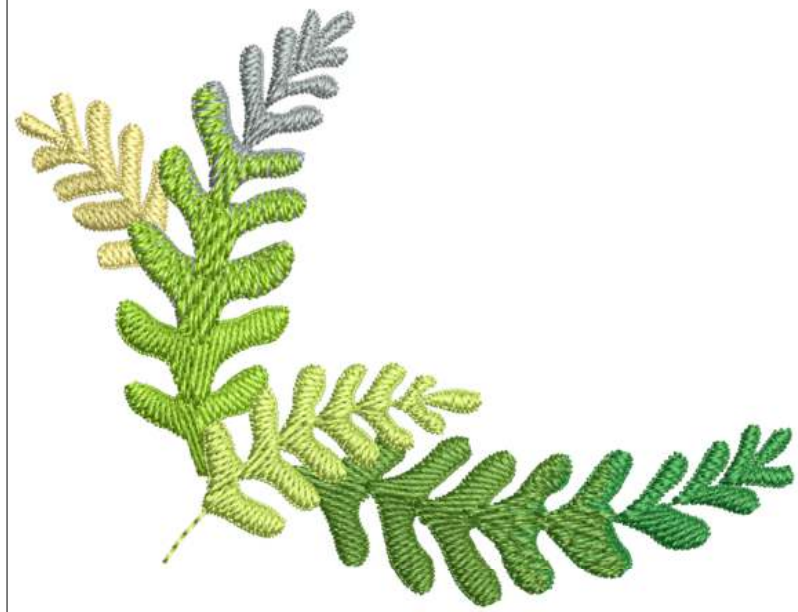
Machine format: Janome
 Color changes: 5
 Stops: 6
 Trims: 5
 Auto fabric: Fabric Name
 Required stabilizer: Stabilizer
 Appliqués: 0
 Total thread: 31.60m
 Total bobbin: 8.94m

Stop Sequence:

| # | Color | St. | Code | Name |
|----|-------|-------|------|--------------|
| 1. | 16 | 1,276 | 206 | Bright Green |
| 2. | 17 | 1,377 | 269 | Meadow |
| 3. | 18 | 867 | 270 | Mustard |
| 4. | 19 | 1,728 | 221 | Gray |
| 5. | 20 | 1,322 | 218 | Yellow Green |
| 6. | 21 | 1,380 | 264 | Green Dust |

Thread usage: 30.99m

| # | Color | Name | Length |
|-----|-------|--------------|--------|
| 16. | 15 | Bright Green | 4.91m |
| 17. | 16 | Meadow | 5.63m |
| 18. | 17 | Mustard | 3.06m |
| 19. | 18 | Gray | 6.69m |
| 20. | 19 | Yellow Green | 5.59m |
| 21. | 20 | Green Dust | 5.10m |



Production Worksheet

Wilcom TrueSizer

Cm577 48

Design: **Cm577_48**

Title:

Stitches: 4,951
 Height: 65.9 mm
 Width: 54.9 mm
 Colors: 5
 Colorway: Colorway 1
 Zoom: 2.73

Machine format: Janome
 Color changes: 4
 Stops: 5
 Trims: 5
 Auto fabric: Fabric Name
 Required stabilizer: Stabilizer
 Appliqués: 0
 Total thread: 19.87m
 Total bobbin: 5.61m

Stop Sequence:

| # | Color | St. | Code | Name |
|----|-------|-------|------|--------------|
| 1. | 16 | 2,488 | 270 | Mustard |
| 2. | 17 | 1,606 | 206 | Bright Green |
| 3. | 18 | 314 | 268 | Olive Drab |
| 4. | 19 | 332 | 221 | Gray |
| 5. | 20 | 209 | 252 | Dark Gray |

Thread usage: 19.36m

| # | Color | Name | Length |
|-----|-------|--------------|--------|
| 16. | 15 | Mustard | 9.76m |
| 17. | 16 | Bright Green | 6.25m |
| 18. | 17 | Olive Drab | 1.47m |
| 19. | 18 | Gray | 1.20m |
| 20. | 19 | Dark Gray | 0.69m |



Production Worksheet

Wilcom TrueSizer

* **Cm578_48***

Design: **Cm578_48**

Title:

Stitches: 7,847
 Height: 70.2 mm
 Width: 63.1 mm
 Colors: 4
 Colorway: Colorway 1
 Zoom: 2.38

Machine format: Janome
 Color changes: 3
 Stops: 4
 Trims: 3
 Auto fabric: Fabric Name
 Required stabilizer: Stabilizer
 Appliqués: 0
 Total thread: 29.45m
 Total bobbin: 7.91m

Stop Sequence:

| # | # | Color | St. | Code | Name |
|----|----|-------|-------|------|--------------|
| 1. | 16 | ■ | 6,827 | 206 | Bright Green |
| 2. | 17 | ■ | 253 | 268 | Olive Drab |
| 3. | 18 | ■ | 233 | 221 | Gray |
| 4. | 19 | ■ | 532 | 252 | Dark Gray |

Thread usage: 29.04m

| # | Color | Name | Length |
|-----|-------|--------------|--------|
| 16. | 15 | Bright Green | 24.71m |
| 17. | 16 | Olive Drab | 1.20m |
| 18. | 17 | Gray | 1.09m |
| 19. | 18 | Dark Gray | 2.04m |



Production Worksheet

Wilcom TrueSizer

* **Cm579_48***

Design: **Cm579_48**

Title:

Stitches: 8,948
 Height: 87.7 mm
 Width: 89.8 mm
 Colors: 5
 Colorway: Colorway 1
 Zoom: 1.69

Machine format: Janome
 Color changes: 4
 Stops: 5
 Trims: 4
 Auto fabric: Fabric Name
 Required stabilizer: Stabilizer
 Appliqués: 0
 Total thread: 38.33m
 Total bobbin: 11.81m

Stop Sequence:

| # | # | Color | St. | Code | Name |
|----|----|-------|-------|------|-------------|
| 1. | 16 | ■ | 6,720 | 269 | Meadow |
| 2. | 17 | ■ | 1,002 | 210 | Pale Yellow |
| 3. | 18 | ■ | 282 | 213 | Beige |
| 4. | 19 | ■ | 244 | 268 | Olive Drab |
| 5. | 20 | ■ | 698 | 252 | Dark Gray |

Thread usage: 37.82m

| # | Color | Name | Length |
|-----|-------|-------------|--------|
| 16. | 15 | Meadow | 27.61m |
| 17. | 16 | Pale Yellow | 4.95m |
| 18. | 17 | Beige | 1.38m |
| 19. | 18 | Olive Drab | 1.01m |
| 20. | 19 | Dark Gray | 2.87m |



Production Worksheet

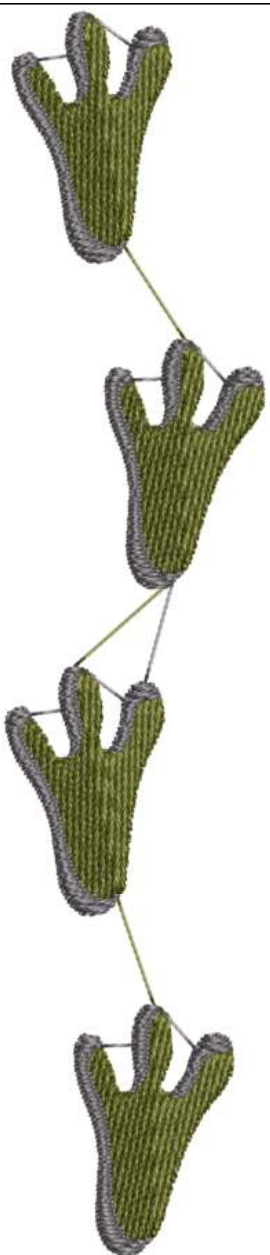
Wilcom TrueSizer

* **Cm580 48***

Design: **Cm580_48**

Title:

Stitches: 4,305
 Height: 140.7 mm
 Width: 29.3 mm
 Colors: 2
 Colorway: Colorway 1
 Zoom: 1.69



Machine format: Janome
 Color changes: 1
 Stops: 2
 Trims: 3
 Auto fabric: Fabric Name
 Required stabilizer: Stabilizer
 Appliqués: 0
 Total thread: 18.39m
 Total bobbin: 5.68m

Stop Sequence:

| # | Color | St. | Code | Name |
|----|-------|-------|------|------------|
| 1. | 16 | 2,288 | 268 | Olive Drab |
| 2. | 17 | 2,015 | 252 | Dark Gray |

Thread usage: 18.19m

| # | Color | Name | Length |
|-----|-------|------------|--------|
| 16. | 15 | Olive Drab | 11.40m |
| 17. | 16 | Dark Gray | 6.79m |

Production Worksheet

Wilcom TrueSizer

* **Cm581 48***

Design: **Cm581_48**

Title:

Stitches: 12,401
 Height: 124.2 mm
 Width: 89.6 mm
 Colors: 10
 Colorway: Colorway 1
 Zoom: 1.69



Machine format: Janome
 Color changes: 10
 Stops: 11
 Trims: 11
 Auto fabric: Fabric Name
 Required stabilizer: Stabilizer
 Appliqués: 0
 Total thread: 67.11m
 Total bobbin: 24.42m

Stop Sequence:

| # | Color | St. | Code | Name |
|-----|-------|-------|------|------------|
| 1. | 16 | 1,297 | 213 | Beige |
| 2. | 17 | 1,394 | 268 | Olive Drab |
| 3. | 18 | 1,170 | 221 | Gray |
| 4. | 19 | 878 | 252 | Dark Gray |
| 5. | 20 | 1,984 | 255 | Toast |
| 6. | 21 | 1,469 | 254 | Hazel |
| 7. | 22 | 781 | 274 | Tangerine |
| 8. | 23 | 1,388 | 272 | Old Gold |
| 9. | 24 | 768 | 236 | Cinnamon |
| 10. | 21 | 821 | 254 | Hazel |
| 11. | 25 | 449 | 270 | Mustard |

Thread usage: 66.01m

| # | Color | Name | Length |
|-----|-------|------------|--------|
| 16. | 15 | Beige | 7.64m |
| 17. | 16 | Olive Drab | 7.79m |
| 18. | 17 | Gray | 6.34m |
| 19. | 18 | Dark Gray | 4.65m |
| 20. | 19 | Toast | 10.67m |
| 21. | 20 | Hazel | 11.64m |
| 22. | 21 | Tangerine | 4.06m |
| 23. | 22 | Old Gold | 7.39m |
| 24. | 23 | Cinnamon | 3.77m |
| 25. | 24 | Mustard | 2.07m |

Production Worksheet

Wilcom TrueSizer

Cm582 48

Design: **Cm582_48**

Title:

Stitches: 11,008
 Height: 56.6 mm
 Width: 77.6 mm
 Colors: 4
 Colorway: Colorway 1
 Zoom: 1.98

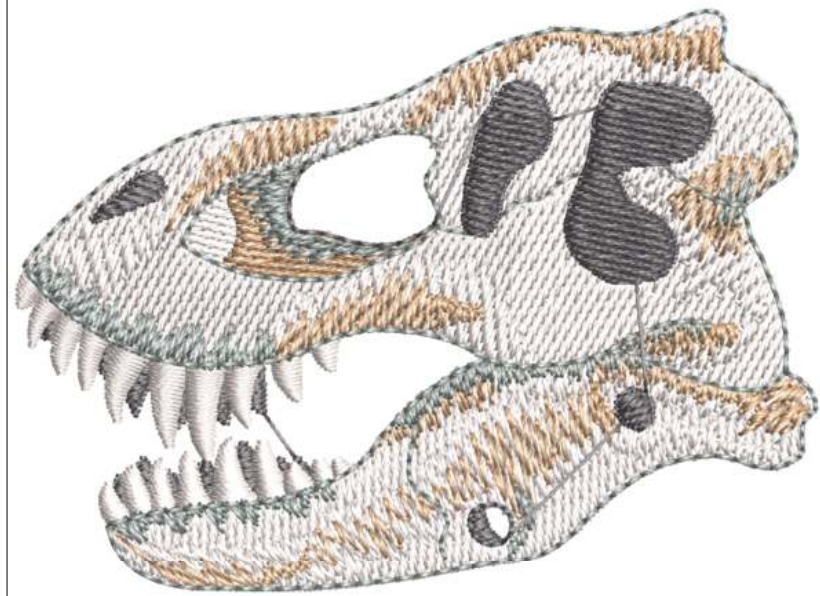
Machine format: Janome
 Color changes: 5
 Stops: 6
 Trims: 6
 Auto fabric: Fabric Name
 Required stabilizer: Stabilizer
 Appliqués: 0
 Total thread: 53.21m
 Total bobbin: 18.13m

Stop Sequence:

| # | # | Color | St. | Code | Name |
|----|----|-------|-------|------|-----------|
| 1. | 16 | □ | 4,334 | 001 | White |
| 2. | 17 | ■ | 671 | 252 | Dark Gray |
| 3. | 16 | □ | 2,230 | 001 | White |
| 4. | 18 | ■ | 1,253 | 213 | Beige |
| 5. | 19 | ■ | 1,471 | 221 | Gray |
| 6. | 17 | ■ | 1,047 | 252 | Dark Gray |

Thread usage: 52.61m

| # | Color | Name | Length |
|-----|-------|-----------|--------|
| 16. | 15 | White | 34.48m |
| 17. | 16 | Dark Gray | 6.69m |
| 18. | 17 | Beige | 5.43m |
| 19. | 18 | Gray | 6.01m |



Production Worksheet

Wilcom TrueSizer

Cm583 48

Design: **Cm583_48**

Title:

Stitches: 4,128
 Height: 165.4 mm
 Width: 159.5 mm
 Colors: 2
 Colorway: Colorway 1
 Zoom: 0.96

Machine format: Janome
 Color changes: 1
 Stops: 2
 Trims: 12
 Auto fabric: Fabric Name
 Required stabilizer: Stabilizer
 Appliqués: 0
 Total thread: 22.85m
 Total bobbin: 8.53m

Stop Sequence:

| # | # | Color | St. | Code | Name |
|----|----|-------|-------|------|------------|
| 1. | 16 | ■ | 4,105 | 002 | Black |
| 2. | 17 | ■ | 21 | 231 | Slate Blue |

Thread usage: 22.65m

| # | Color | Name | Length |
|-----|-------|------------|--------|
| 16. | 15 | Black | 22.57m |
| 17. | 16 | Slate Blue | 0.08m |

