

Production Worksheet

Wilcom TrueSizer

***BRDLKEDNO**

Design: **Bird like dino**

Title:

Stitches: 15,073
 Height: 123.2 mm
 Width: 123.2 mm
 Colors: 8
 Colorway: Colorway 1
 Zoom: 1.23

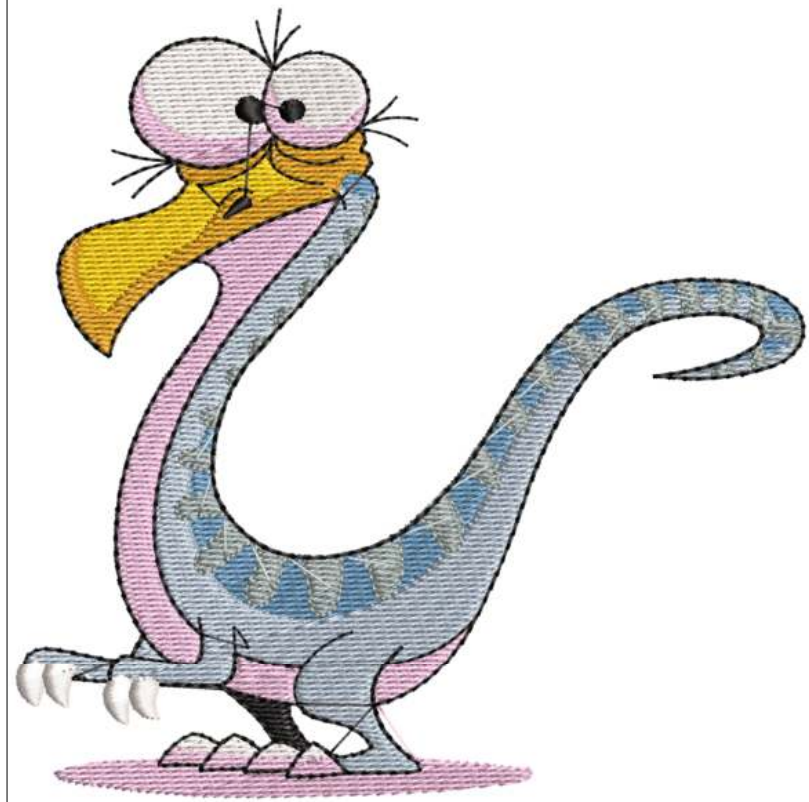
Machine format: Janome
 Color changes: 8
 Stops: 9
 Trims: 15
 Auto fabric: Fabric Name
 Required stabilizer: Stabilizer
 Appliqués: 0
 Total thread: 79.12m
 Total bobbin: 28.49m

Stop Sequence:

#	#	Color	St.	Code	Name
1.	16	□	1,057	001	White
2.	17	■	639	239	Sunflower
3.	18	■	2,633	240	Orchid Pink
4.	19	■	1,759	230	Bright Blue
5.	20	■	3,364	216	Pale Sky
6.	21	■	2,375	221	Gray
7.	22	■	913	255	Toast
8.	16	□	266	001	White
9.	23	■	2,065	002	Black

Thread usage: 78.21m

#	Color	Name	Length
16.	15	White	7.44m
17.	16	Sunflower	3.65m
18.	17	Orchid Pink	14.32m
19.	18	Bright Blue	9.80m
20.	19	Pale Sky	18.50m
21.	20	Gray	9.88m
22.	21	Toast	4.54m
23.	22	Black	10.08m



Production Worksheet

Wilcom TrueSizer

BRONTOSAURUS

Design: **Brontosaurus**

Title:

Stitches: 12,464
 Height: 121.0 mm
 Width: 121.8 mm
 Colors: 9
 Colorway: Colorway 1
 Zoom: 1.22

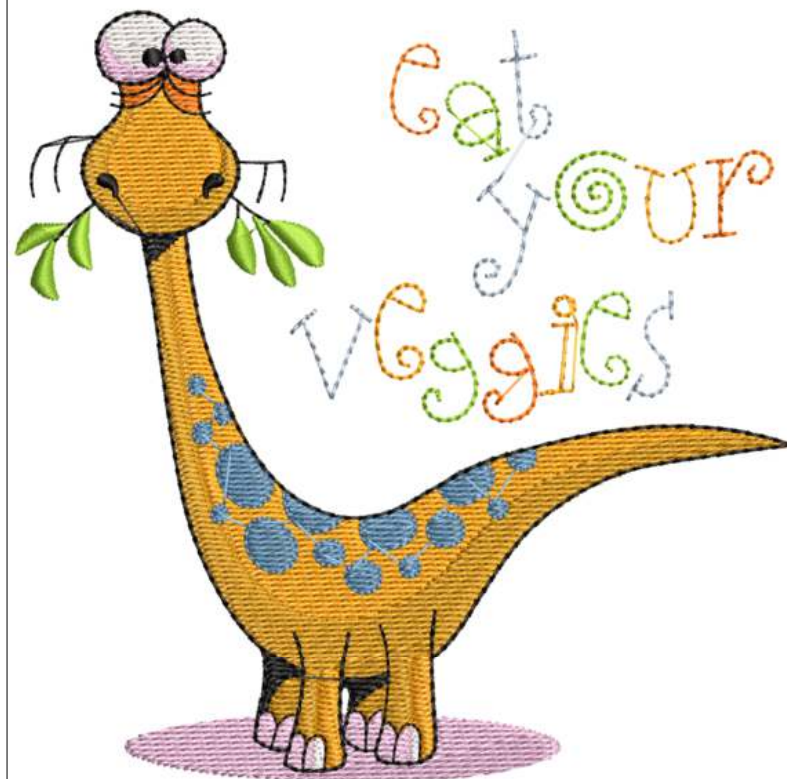
Machine format: Janome
 Color changes: 8
 Stops: 9
 Trims: 30
 Auto fabric: Fabric Name
 Required stabilizer: Stabilizer
 Appliqués: 0
 Total thread: 62.92m
 Total bobbin: 21.98m

Stop Sequence:

#	#	Color	St.	Code	Name
1.	16	□	485	001	White
2.	17	■	1,371	240	Orchid Pink
3.	18	■	502	203	Orange
4.	19	■	3,083	273	Honey Dew
5.	20	■	2,715	255	Toast
6.	21	■	1,362	230	Bright Blue
7.	22	■	383	216	Pale Sky
8.	23	■	938	218	Yellow Green
9.	24	■	1,623	002	Black

Thread usage: 62.02m

#	Color	Name	Length
16.	15	White	2.24m
17.	16	Orchid Pink	7.24m
18.	17	Orange	2.15m
19.	18	Honey Dew	16.79m
20.	19	Toast	14.10m
21.	20	Bright Blue	6.01m
22.	21	Pale Sky	1.68m
23.	22	Yellow Green	4.45m
24.	23	Black	7.37m



Production Worksheet

Wilcom TrueSizer

BRONTOSAURUS2

Design: Brontosaurus2

Title:

Stitches: 18,688
 Height: 123.8 mm
 Width: 121.6 mm
 Colors: 6
 Colorway: Colorway 1
 Zoom: 1.22

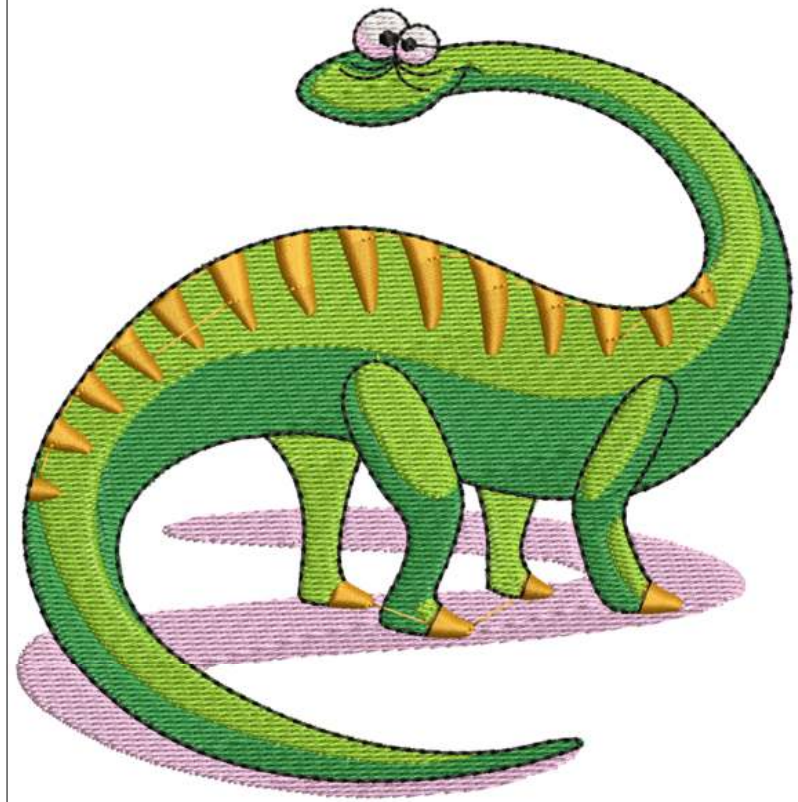
Machine format: Janome
 Color changes: 6
 Stops: 7
 Trims: 17
 Auto fabric: Fabric Name
 Required stabilizer: Stabilizer
 Appliqués: 0
 Total thread: 106.64m
 Total bobbin: 40.63m

Stop Sequence:

#	#	Color	St.	Code	Name
1.	16	White	170	001	White
2.	17	Orchid Pink	3,154	240	Orchid Pink
3.	18	Yellow Green	742	218	Yellow Green
4.	19	Bright Green	5,869	206	Bright Green
5.	18	Yellow Green	5,616	218	Yellow Green
6.	20	Toast	1,599	255	Toast
7.	21	Black	1,536	002	Black

Thread usage: 105.94m

#	Color	Name	Length
16.	15	White	0.82m
17.	16	Orchid Pink	17.43m
18.	17	Yellow Green	37.64m
19.	18	Bright Green	32.59m
20.	19	Toast	9.54m
21.	20	Black	7.93m



Production Worksheet

Wilcom TrueSizer

DANCING DINO

Design: dancing dino

Title:

Stitches: 18,441
 Height: 125.2 mm
 Width: 120.8 mm
 Colors: 9
 Colorway: Colorway 1
 Zoom: 1.22

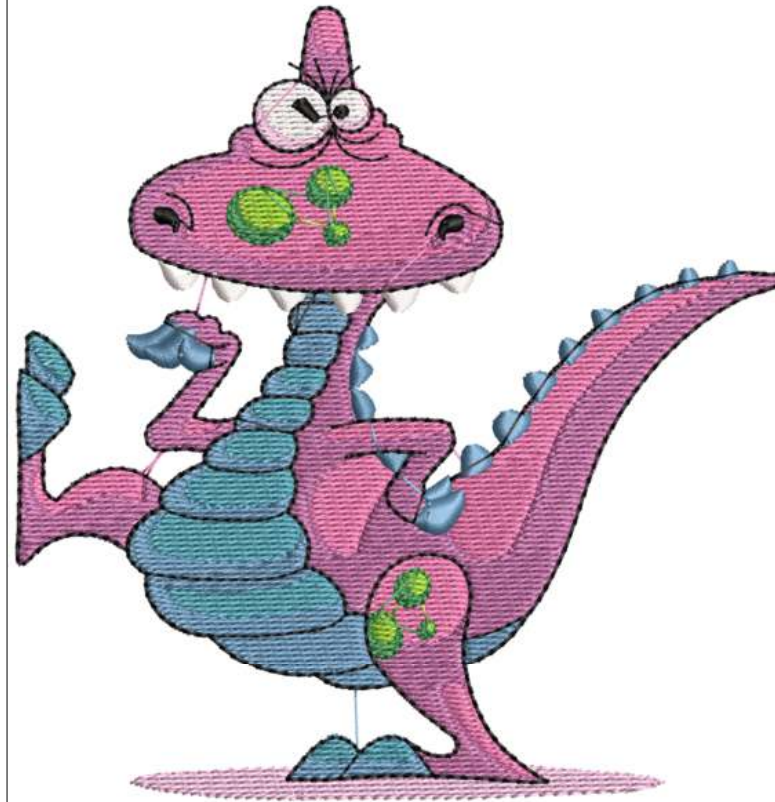
Machine format: Janome
 Color changes: 9
 Stops: 10
 Trims: 31
 Auto fabric: Fabric Name
 Required stabilizer: Stabilizer
 Appliqués: 0
 Total thread: 95.79m
 Total bobbin: 34.32m

Stop Sequence:

#	#	Color	St.	Code	Name
1.	16	White	306	001	White
2.	17	Orchid Pink	882	240	Orchid Pink
3.	18	Floral Pink	3,860	266	Floral Pink
4.	19	Purple	4,839	208	Purple
5.	20	Powder Blue	1,497	229	Powder Blue
6.	21	Bright Blue	3,314	230	Bright Blue
7.	22	Yellow Green	421	218	Yellow Green
8.	23	Green	788	226	Green
9.	16	White	310	001	White
10.	24	Black	2,222	002	Black

Thread usage: 94.79m

#	Color	Name	Length
16.	15	White	3.25m
17.	16	Orchid Pink	4.55m
18.	17	Floral Pink	22.05m
19.	18	Purple	25.11m
20.	19	Powder Blue	7.95m
21.	20	Bright Blue	16.92m
22.	21	Yellow Green	1.82m
23.	22	Green	3.03m
24.	23	Black	10.12m



Production Worksheet

Wilcom TrueSizer

* **DIMETRODON** *

Design: **dimetrodon**

Title:

Stitches: 20,530
 Height: 119.4 mm
 Width: 118.6 mm
 Colors: 10
 Colorway: Colorway 1
 Zoom: 1.26

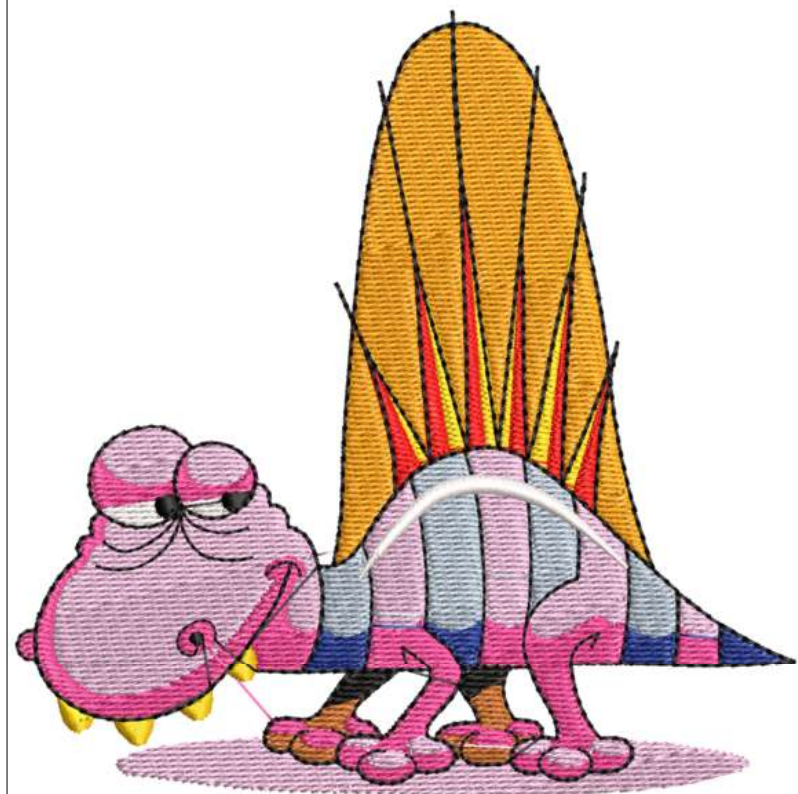
Machine format: Janome
 Color changes: 12
 Stops: 13
 Trims: 18
 Auto fabric: Fabric Name
 Required stabilizer: Stabilizer
 Appliqués: 0
 Total thread: 103.79m
 Total bobbin: 36.40m

Stop Sequence:

#	#	Color	St.	Code	Name
1.	16	□	200	001	White
2.	17	□	989	240	Orchid Pink
3.	18	□	542	254	Hazel
4.	17	□	3,162	240	Orchid Pink
5.	19	□	2,900	265	Crimson
6.	20	□	565	262	Blue Ink
7.	21	□	1,233	216	Pale Sky
8.	22	□	4,014	273	Honey Dew
9.	23	□	1,770	239	Sunflower
10.	24	□	1,638	225	Red
11.	17	□	307	240	Orchid Pink
12.	25	□	2,815	002	Black
13.	16	□	393	001	White

Thread usage: 102.48m

#	Color	Name	Length
16.	15	White	2.79m
17.	16	Orchid Pink	25.17m
18.	17	Hazel	2.50m
19.	18	Crimson	14.46m
20.	19	Blue Ink	2.61m
21.	20	Pale Sky	6.49m
22.	21	Honey Dew	22.37m
23.	22	Sunflower	6.47m
24.	23	Red	5.75m
25.	24	Black	13.87m



Production Worksheet

Wilcom TrueSizer

* **DINOBAG LETTERS** *

Design: **dinobag letters**

Title:

Stitches: 6,096
 Height: 171.6 mm
 Width: 44.0 mm
 Colors: 2
 Colorway: Colorway 1
 Zoom: 1.39

Machine format: Janome
 Color changes: 1
 Stops: 2
 Trims: 8
 Auto fabric: Fabric Name
 Required stabilizer: Stabilizer
 Appliqués: 0
 Total thread: 32.56m
 Total bobbin: 11.95m

Stop Sequence:

#	#	Color	St.	Code	Name
1.	16	□	4,688	275	Canary Yellow
2.	17	□	1,406	273	Honey Dew

Thread usage: 32.36m

#	Color	Name	Length
16.	15	Canary Yellow	25.76m
17.	16	Honey Dew	6.60m



Production Worksheet

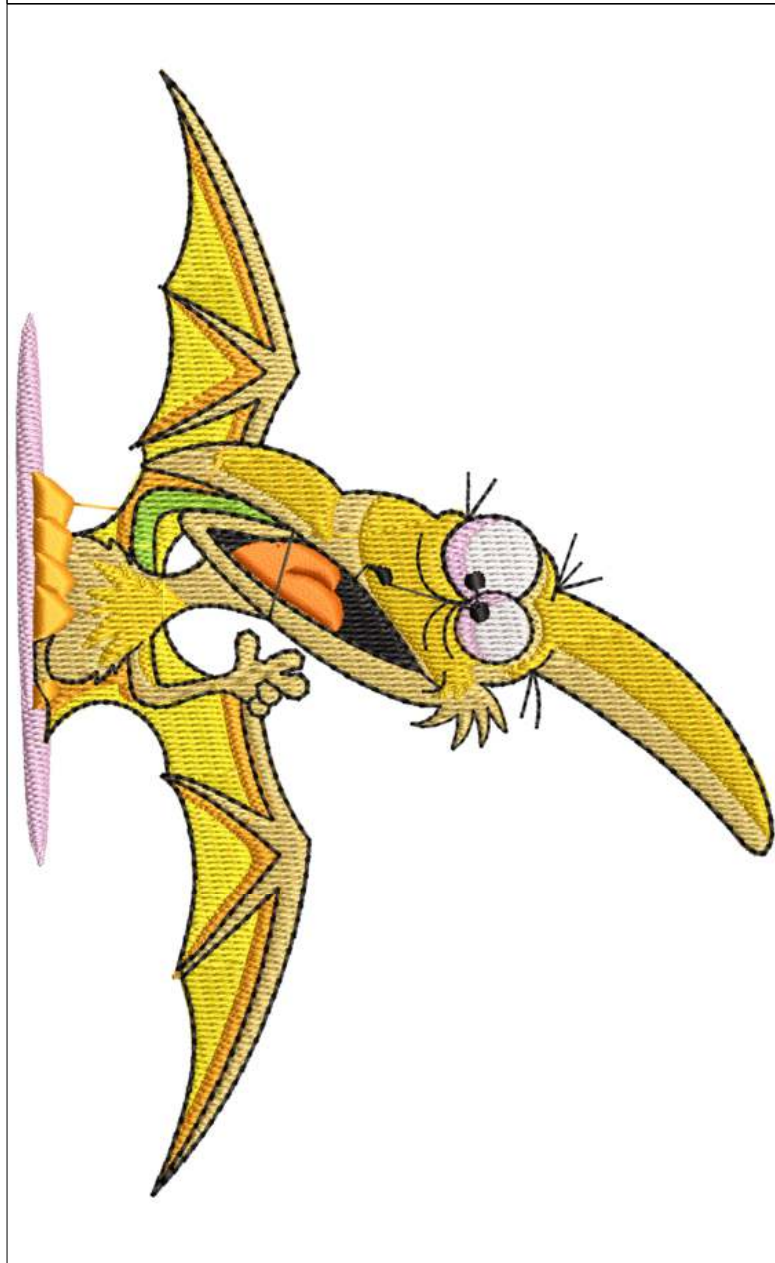
Wilcom TrueSizer

*** PTERADACTYL ***

Design: **Pteradactyl**

Title:

Stitches: 16,520
 Height: 159.6 mm
 Width: 107.4 mm
 Colors: 9
 Colorway: Colorway 1
 Zoom: 1.36



Machine format: Janome
 Color changes: 9
 Stops: 10
 Trims: 15
 Auto fabric: Fabric Name
 Required stabilizer: Stabilizer
 Appliqués: 0
 Total thread: 78.13m
 Total bobbin: 26.13m

Stop Sequence:

#	#	Color	St.	Code	Name
1.	16	White	383	001	White
2.	17	Orchid Pink	1,095	240	Orchid Pink
3.	18	Black	308	002	Black
4.	19	Orange	231	203	Orange
5.	20	Yellow Green	281	218	Yellow Green
6.	21	Gold	5,318	003	Gold
7.	22	Sunflower	2,112	239	Sunflower
8.	23	Canary Yellow	2,168	275	Canary Yellow
9.	24	Honey Dew	2,366	273	Honey Dew
10.	18	Black	2,256	002	Black

Thread usage:

#	Color	Name	Length
16.	15	White	2.05m
17.	16	Orchid Pink	4.55m
18.	17	Black	12.46m
19.	18	Orange	1.69m
20.	19	Yellow Green	1.30m
21.	20	Gold	24.29m
22.	21	Sunflower	10.58m
23.	22	Canary Yellow	10.49m
24.	23	Honey Dew	9.72m

Production Worksheet

Wilcom TrueSizer

*** STEGOSAURUS ***

Design: **Stegosaurus**

Title:

Stitches: 17,422
 Height: 135.6 mm
 Width: 106.4 mm
 Colors: 9
 Colorway: Colorway 1
 Zoom: 1.39



Machine format: Janome
 Color changes: 8
 Stops: 9
 Trims: 20
 Auto fabric: Fabric Name
 Required stabilizer: Stabilizer
 Appliqués: 0
 Total thread: 94.12m
 Total bobbin: 34.59m

Stop Sequence:

#	#	Color	St.	Code	Name
1.	16	White	547	001	White
2.	17	Orchid Pink	1,103	240	Orchid Pink
3.	18	Bright Green	4,600	206	Bright Green
4.	19	Sunflower	1,746	239	Sunflower
5.	20	Orange	1,187	203	Orange
6.	21	Canary Yellow	3,077	275	Canary Yellow
7.	22	Yellow Green	571	218	Yellow Green
8.	23	Honey Dew	2,676	273	Honey Dew
9.	24	Black	1,913	002	Black

Thread usage:

#	Color	Name	Length
16.	15	White	3.20m
17.	16	Orchid Pink	4.62m
18.	17	Bright Green	25.22m
19.	18	Sunflower	10.40m
20.	19	Orange	6.18m
21.	20	Canary Yellow	17.30m
22.	21	Yellow Green	2.68m
23.	22	Honey Dew	14.87m
24.	23	Black	8.75m

Production Worksheet

Wilcom TrueSizer

T REX

Design: **t_rex**

Title:

Stitches: 20,887
 Height: 126.0 mm
 Width: 123.2 mm
 Colors: 10
 Colorway: Colorway 1
 Zoom: 1.18

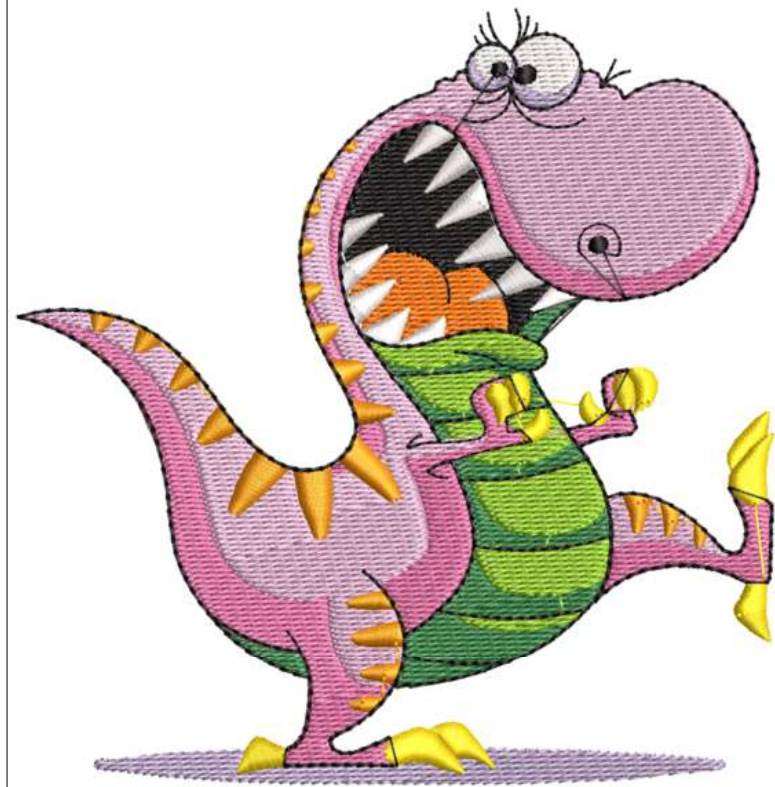
Machine format: Janome
 Color changes: 11
 Stops: 12
 Trims: 24
 Auto fabric: Fabric Name
 Required stabilizer: Stabilizer
 Appliqués: 0
 Total thread: 112.65m
 Total bobbin: 41.29m

Stop Sequence:

#	#	Color	St.	Code	Name
1.	16	□	301	001	White
2.	17	■	2,005	226	Green
3.	18	■	1,490	218	Yellow Green
4.	19	■	4,353	266	Floral Pink
5.	20	■	5,009	240	Orchid Pink
6.	21	■	1,105	209	Pale Violet
7.	22	■	603	203	Orange
8.	23	■	1,006	275	Canary Yellow
9.	24	■	1,270	273	Honey Dew
10.	25	■	1,088	002	Black
11.	16	□	852	001	White
12.	25	■	1,803	002	Black

Thread usage: 111.45m

#	Color	Name	Length
16.	15	White	6.10m
17.	16	Green	10.09m
18.	17	Yellow Green	8.12m
19.	18	Floral Pink	21.77m
20.	19	Orchid Pink	29.22m
21.	20	Pale Violet	5.77m
22.	21	Orange	3.20m
23.	22	Canary Yellow	5.80m
24.	23	Honey Dew	6.71m
25.	24	Black	14.65m



Production Worksheet

Wilcom TrueSizer

T REX JUNIOR

Design: **t_rexjunior**

Title:

Stitches: 15,577
 Height: 146.0 mm
 Width: 113.0 mm
 Colors: 7
 Colorway: Colorway 1
 Zoom: 1.32

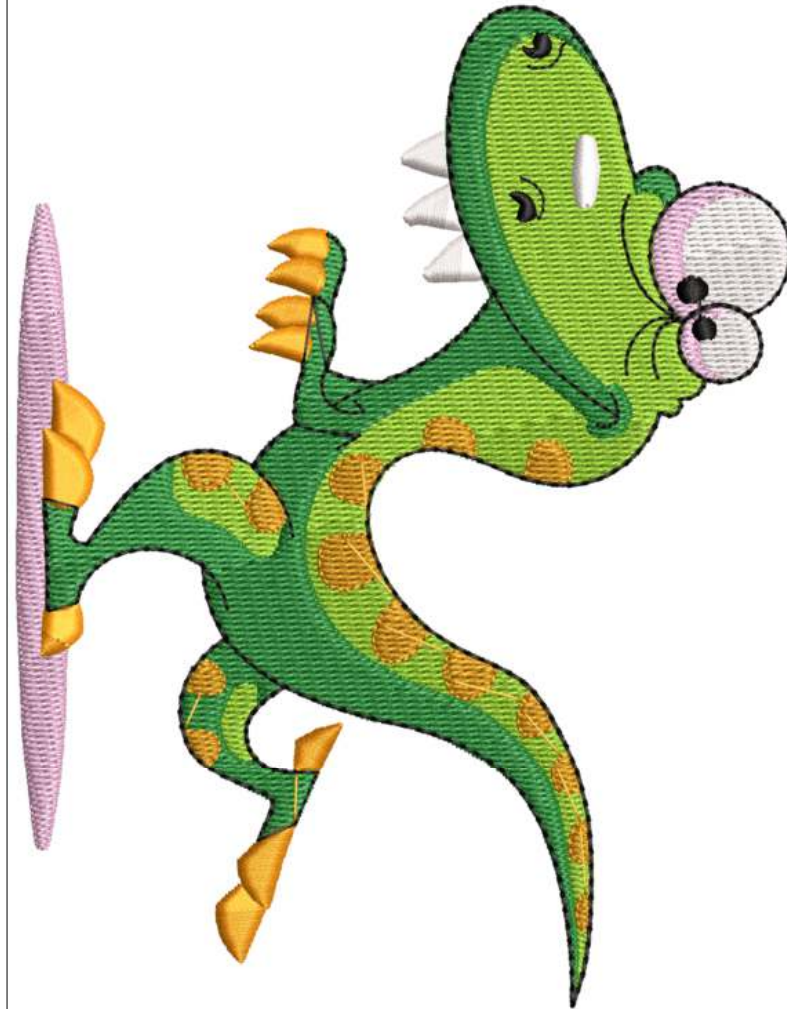
Machine format: Janome
 Color changes: 7
 Stops: 8
 Trims: 23
 Auto fabric: Fabric Name
 Required stabilizer: Stabilizer
 Appliqués: 0
 Total thread: 85.56m
 Total bobbin: 31.77m

Stop Sequence:

#	#	Color	St.	Code	Name
1.	16	□	870	001	White
2.	17	■	1,612	240	Orchid Pink
3.	18	■	4,488	218	Yellow Green
4.	19	■	4,455	206	Bright Green
5.	20	■	964	273	Honey Dew
6.	21	■	1,641	255	Toast
7.	16	□	95	001	White
8.	22	■	1,450	002	Black

Thread usage: 84.76m

#	Color	Name	Length
16.	15	White	5.73m
17.	16	Orchid Pink	7.87m
18.	17	Yellow Green	26.69m
19.	18	Bright Green	23.66m
20.	19	Honey Dew	6.49m
21.	20	Toast	7.32m
22.	21	Black	7.01m



Production Worksheet

Wilcom TrueSizer

*** TRICERATOPS ***

Design: **triceratops**

Title:

Stitches: 20,162
 Height: 132.6 mm
 Width: 120.6 mm
 Colors: 9
 Colorway: Colorway 1
 Zoom: 1.23

Machine format: Janome
 Color changes: 8
 Stops: 9
 Trims: 23
 Auto fabric: Fabric Name
 Required stabilizer: Stabilizer
 Appliqués: 0
 Total thread: 115.92m
 Total bobbin: 44.26m

Stop Sequence:

#	#	Color	St.	Code	Name
1.	16	■	375	205	Dark Brown
2.	17	□	446	001	White
3.	18	■	1,476	240	Orchid Pink
4.	19	■	7,559	274	Tangerine
5.	20	■	5,742	272	Old Gold
6.	21	■	632	270	Mustard
7.	22	■	124	218	Yellow Green
8.	23	■	1,924	273	Honey Dew
9.	24	■	1,882	002	Black

Thread usage: 115.01m

#	Color	Name	Length
16.	15	Dark Brown	1.70m
17.	16	White	2.46m
18.	17	Orchid Pink	6.42m
19.	18	Tangerine	45.42m
20.	19	Old Gold	30.85m
21.	20	Mustard	4.09m
22.	21	Yellow Green	0.76m
23.	22	Honey Dew	14.76m
24.	23	Black	8.55m

