

Production Worksheet

Wilcom TrueSizer

***VAQUINHA DE RAMOS E COROAS 03 - 06 8CM**

Design: VAQUINHA DE RAMOS E COROAS 03 - 06 8CM
Title:

Stitches: 6,813
Height: 80.2 mm
Width: 84.6 mm
Colors: 6
Colorway: Colorway 1
Zoom: 1.79

Machine format: Janome
Color changes: 7
Stops: 8
Trims: 40
Auto fabric: Fabric Name
Required stabilizer: Stabilizer
Appliqués: 0
Total thread: 29.02m
Total bobbin: 8.65m

Stop Sequence:

#	#	Color	St.	Code	Name
1.	16		3,907	001	White
2.	17		1,069	221	Gray
3.	18		341	264	Green Dust
4.	19		548	256	Salmon
5.	20		388	201	Pink
6.	19		23	256	Salmon
7.	20		444	201	Pink
8.	21		93	273	Honey Dew

Thread usage: 28.22m

#	Color	Name	Length
16.	15	White	16.76m
17.	16	Gray	4.45m
18.	17	Green Dust	1.11m
19.	18	Salmon	2.25m
20.	19	Pink	3.36m
21.	20	Honey Dew	0.29m



Production Worksheet

Wilcom TrueSizer

***VAQUINHA DE RAMOS E COROAS 03 - 06 12CM**

Design: VAQUINHA DE RAMOS E COROAS 03 - 06 12CM
Title:

Stitches: 10,600
Height: 121.4 mm
Width: 128.3 mm
Colors: 6
Colorway: Colorway 1
Zoom: 1.18

Machine format: Janome
Color changes: 7
Stops: 8
Trims: 41
Auto fabric: Fabric Name
Required stabilizer: Stabilizer
Appliqués: 0
Total thread: 50.93m
Total bobbin: 17.14m

Stop Sequence:

#	#	Color	St.	Code	Name
1.	16		6,579	001	White
2.	17		1,376	221	Gray
3.	18		466	264	Green Dust
4.	19		795	256	Salmon
5.	20		490	201	Pink
6.	19		30	256	Salmon
7.	20		757	201	Pink
8.	21		107	273	Honey Dew

Thread usage: 50.13m

#	Color	Name	Length
16.	15	White	31.64m
17.	16	Gray	6.24m
18.	17	Green Dust	1.73m
19.	18	Salmon	3.92m
20.	19	Pink	6.19m
21.	20	Honey Dew	0.41m



Production Worksheet

Wilcom TrueSizer

VAQUINHA DE RAMOS E COROAS 03 - 06 13X18

Design: VAQUINHA DE RAMOS E COROAS 03 - 06 13X18

Title:

Stitches: 11,164
 Height: 136.7 mm
 Width: 129.2 mm
 Colors: 6
 Colorway: Colorway 1
 Zoom: 1.17

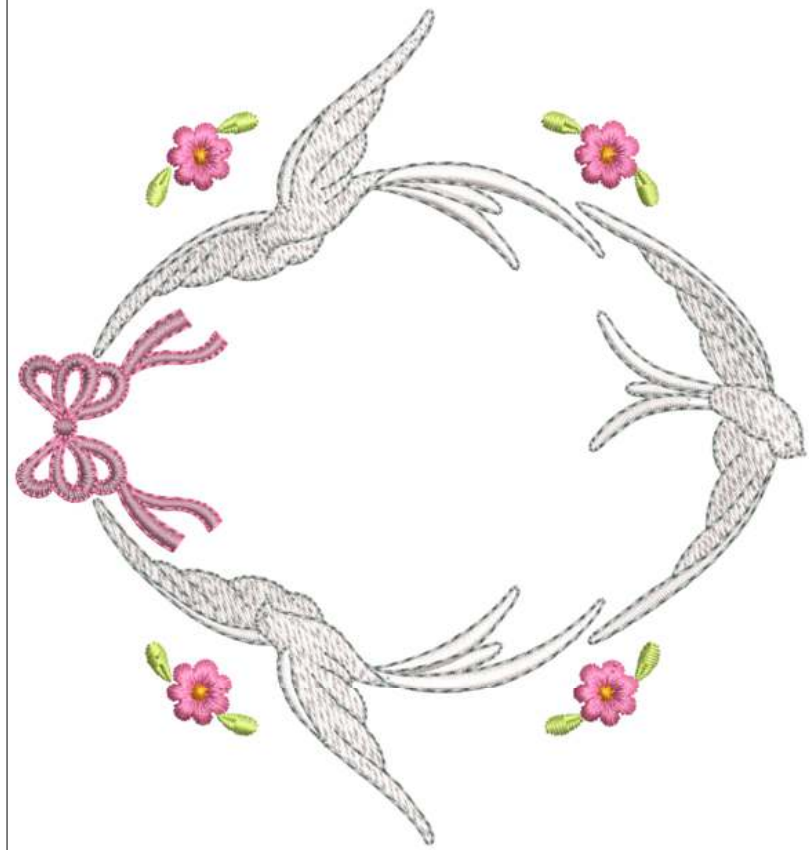
Machine format: Janome
 Color changes: 7
 Stops: 8
 Trims: 40
 Auto fabric: Fabric Name
 Required stabilizer: Stabilizer
 Appliqués: 0
 Total thread: 54.66m
 Total bobbin: 18.69m

Stop Sequence:

#	#	Color	St.	Code	Name
1.	16	White	7,072	001	White
2.	17	Gray	1,423	221	Gray
3.	18	Green Dust	481	264	Green Dust
4.	19	Salmon	843	256	Salmon
5.	20	Pink	514	201	Pink
6.	19	Salmon	30	256	Salmon
7.	20	Pink	692	201	Pink
8.	21	Honey Dew	109	273	Honey Dew

Thread usage: 53.86m

#	Color	Name	Length
16.	15	White	34.59m
17.	16	Gray	6.55m
18.	17	Green Dust	1.84m
19.	18	Salmon	4.31m
20.	19	Pink	6.14m
21.	20	Honey Dew	0.43m



Production Worksheet

Wilcom TrueSizer

VAQUINHA DE RAMOS E COROAS 03 - 06 14X20

Design: VAQUINHA DE RAMOS E COROAS 03 - 06 14X20

Title:

Stitches: 12,142
 Height: 147.2 mm
 Width: 139.2 mm
 Colors: 6
 Colorway: Colorway 1
 Zoom: 1.09

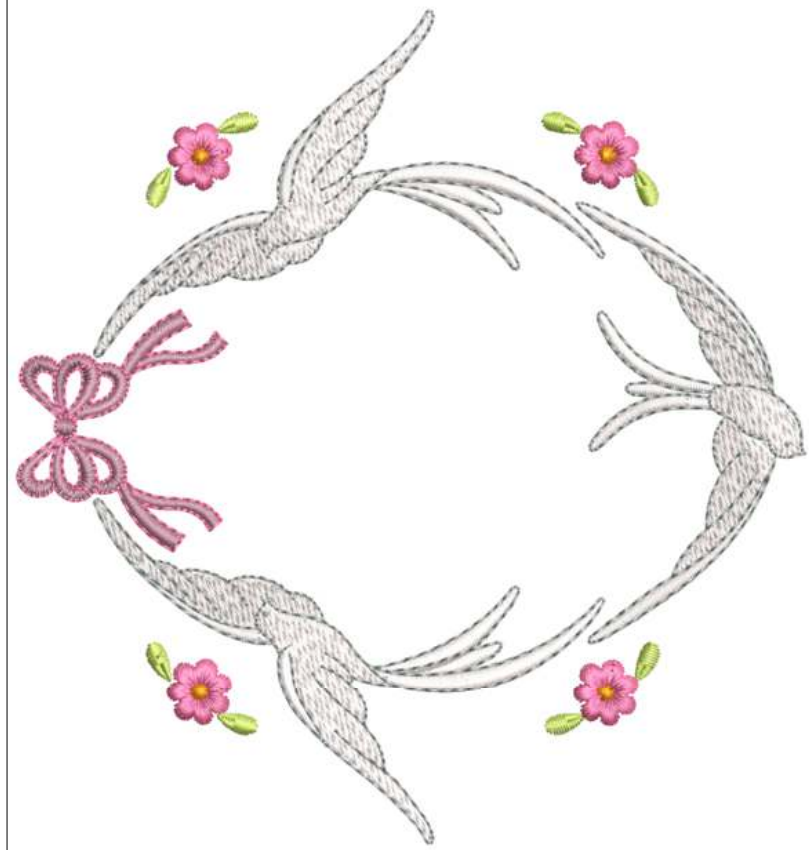
Machine format: Janome
 Color changes: 7
 Stops: 8
 Trims: 40
 Auto fabric: Fabric Name
 Required stabilizer: Stabilizer
 Appliqués: 0
 Total thread: 61.03m
 Total bobbin: 21.30m

Stop Sequence:

#	#	Color	St.	Code	Name
1.	16	White	7,811	001	White
2.	17	Gray	1,492	221	Gray
3.	18	Green Dust	510	264	Green Dust
4.	19	Salmon	914	256	Salmon
5.	20	Pink	538	201	Pink
6.	19	Salmon	32	256	Salmon
7.	20	Pink	732	201	Pink
8.	21	Honey Dew	113	273	Honey Dew

Thread usage: 60.23m

#	Color	Name	Length
16.	15	White	39.15m
17.	16	Gray	6.97m
18.	17	Green Dust	2.02m
19.	18	Salmon	4.84m
20.	19	Pink	6.76m
21.	20	Honey Dew	0.48m



Production Worksheet

Wilcom TrueSizer

VAQUINHA DE RAMOS E COROAS 03 - 06 18X30

Design: **VAQUINHA DE RAMOS E COROAS 03 - 06 18X30**

Title:

Stitches: 16,155
 Height: 189.6 mm
 Width: 179.2 mm
 Colors: 6
 Colorway: Colorway 1
 Zoom: 0.84

Machine format: Janome
 Color changes: 7
 Stops: 8
 Trims: 40
 Auto fabric: Fabric Name
 Required stabilizer: Stabilizer
 Appliqués: 0
 Total thread: 88.56m
 Total bobbin: 32.86m

Stop Sequence:

#	#	Color	St.	Code	Name
1.	16		10,873	001	White
2.	17		1,761	221	Gray
3.	18		642	264	Green Dust
4.	19		1,186	256	Salmon
5.	20		609	201	Pink
6.	19		37	256	Salmon
7.	20		916	201	Pink
8.	21		131	273	Honey Dew

Thread usage: 87.76m

#	Color	Name	Length
16.		White	58.77m
17.		Gray	8.65m
18.		Green Dust	2.87m
19.		Salmon	7.30m
20.		Pink	9.49m
21.		Honey Dew	0.67m

